


WARNING:

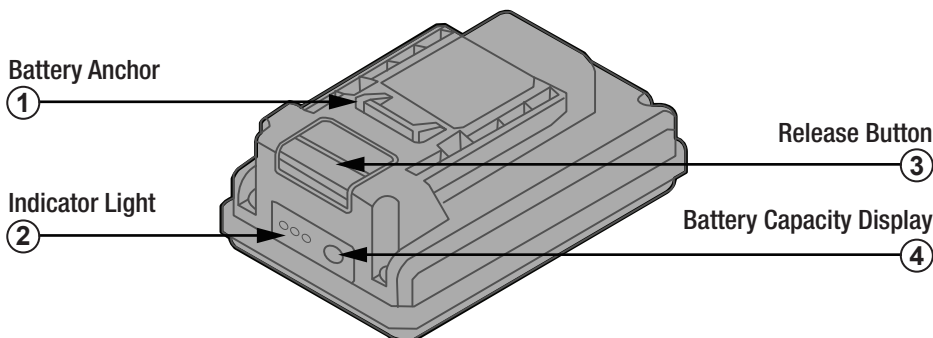
Completely read through the user manual before assembling and operating the power cleaner.


NEED IMMEDIATE HELP ?

 CONTACT US www.TygerAuto.com/Contact

Please Call Customer Service: 1-866-340-3038

1. GENERAL IDENTIFICATION:

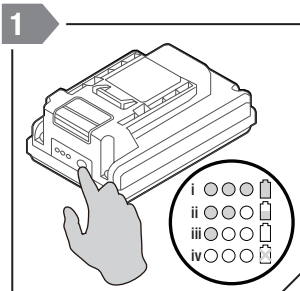


2. CAUTION TO THE END-USERS:

The following represents a typical, but not exhaustive list of good advice to be provided by the equipment manufacturer to the end-user.

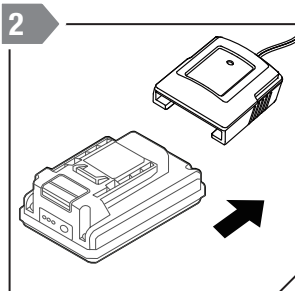
- a) DO NOT dismantle, open or shred secondary cells or batteries.
- b) DO NOT expose cells or batteries to heat or fire. Avoid storage under direct sunlight.
- c) DO NOT short-circuit a cell or a battery. DO NOT store cells or batteries haphazardly in a box or drawer where they may short-circuit each other or be short-circuited by other metal objects.
- d) DO NOT remove a cell or battery from its original packaging until required for use.
- e) DO NOT subject cells or batteries to mechanical shock.
- f) In the event of a cell leaking, do not allow the liquid to come in contact with the skin or eyes. If contact has been made, wash the affected area with copious amounts of water and seek medical advice.
- g) DO NOT use any charger other than that specifically provided for use with the equipment.
- h) Observe the plus (+) and minus (-) marks on the cell, battery and equipment and ensure correct use.
- i) DO NOT use any cell or battery which is not designed for use with the equipment.
- j) DO NOT mix cells of different manufacture, capacity, size or type within a device.
- k) Battery usage by children should be supervised.
- l) Seek medical advice immediately if a cell or a battery has been swallowed.
- m) Always purchase the battery recommended by the device manufacturer for the equipment.
- n) Keep cells and batteries clean and dry.
- o) Wipe the cell or battery terminals with a clean dry cloth if they become dirty.
- p) Secondary cells and batteries need to be charged before use. Always use the correct charger and refer to the manufacturer's instructions or equipment manual for proper charging instructions.
- q) DO NOT leave a battery on prolonged charge when not in use.
- r) After extended periods of storage, it may be necessary to charge and discharge the cells or batteries several times to obtain maximum performance.
- s) Retain the original product documentation for future reference.
- t) Use only the cell or battery in the application for which it was intended.
- u) When possible, remove the battery from the equipment when not in use.
- v) Dispose of battery pack properly in accordance to local authority guidelines.

3.OPERATION:



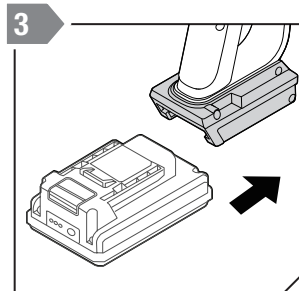
3-1. Battery capacity display:

- (i) **Three lights on:** 78% - 100%.
- (ii) **Two lights on:** 50%-78%.
- (iii) **One light on:** 1.3% - 50%
- (iv) **All lights off:** Please charge.



3-2. Charge the battery pack:

Installing battery pack into charger



3-3. Use the battery pack:

Installing battery pack into the cleaner

4.STORE:

The battery pack must store the cleaner indoors to prevent the water , the ideal storage temperature as below:

 **One year:** 68 °F - 77 °F **Three months:** 68 °F - 113 °F **One month:** 68°F - 140°F

⚠ CAUTION! The battery pack need to be charged and discharged every three months! The battery pack should be stored in a clean, dry and ventilated environment with ambient temperature of **14°F - 95°F**, should be avoided to contact with corrosive substances and fires, kept away heat sources.

5.CLEANING AND MAINTENANCE:

5-1.Cleaning:

Keep the surface of the battery pack clean and wipe it clean with a dry cloth.

5-2.Maintenance:

The battery pack **MUST NOT** be disassembled. If the unit is damaged, contact the supplier or manufacturer.

Technical Specifications

Model	SP-PW2001
Battery capacity	2Ah
Rated voltage	18V D.C. 20Vd.c Max
Allowable charging temperature range	42.8°F to 104°F
Battery type	LI-ION
Cell quantity	5 PCS