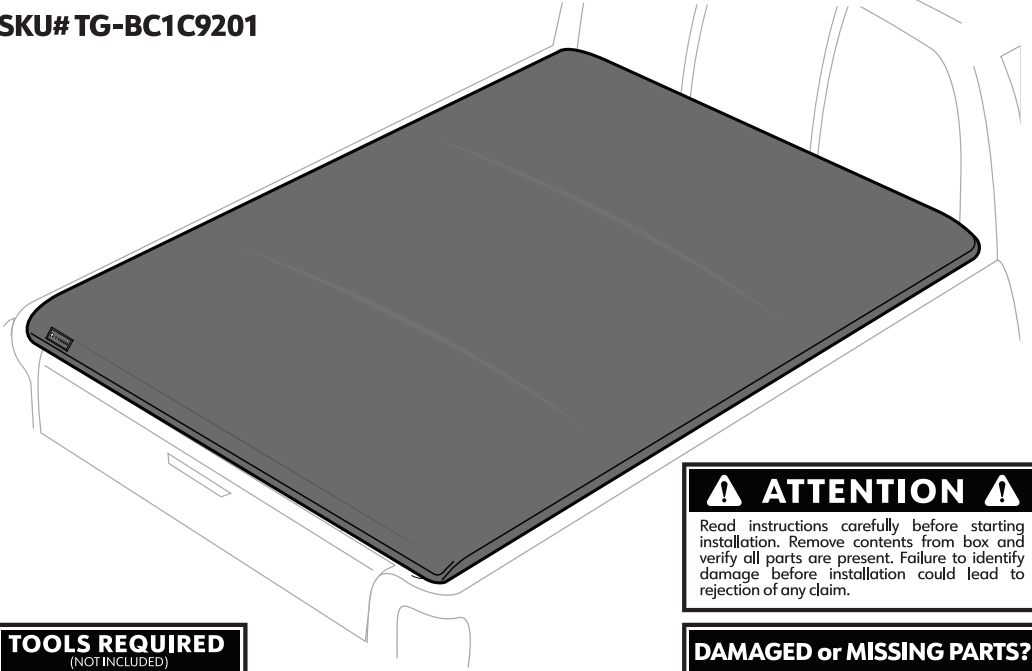




# TYGER®

# T1 | SOFT ROLL-UP TONNEAU COVER

SKU# TG-BC1C9201



## ⚠ ATTENTION ⚠

Read instructions carefully before starting installation. Remove contents from box and verify all parts are present. Failure to identify damage before installation could lead to rejection of any claim.

## TOOLS REQUIRED (NOT INCLUDED)



10mm  
Socket



Ratchet  
Wrench



Phillips  
Screwdriver

## DAMAGED or MISSING PARTS?

## NEED HELP?

contact us: **1-866-340-3038**

## PARTS LIST

(ONLY MARKED ITEMS ARE INCLUDED)

### ☒ Bed Cover



☐ SP-BC1002B



☐ SP-BC1004



ONLY REQUIRED FOR FRONTIER  
MODEL YEARS UP TO 2021

☐ SP-BC0003  
Front Seal Strip  
170 x 2.5 x 1 cm

☐ SP-BC0004  
Front Seal Strip  
170 x 3.5 x 0.4 cm

☐ SP-BC0007  
Front Seal Strip  
150 x 3 x 1.6 cm



### ☒ Side Rails (L & R)



☐ SP-BC1021



☐ SP-BC1005B



☐ SP-BC1003



☐ SP-BC1006B



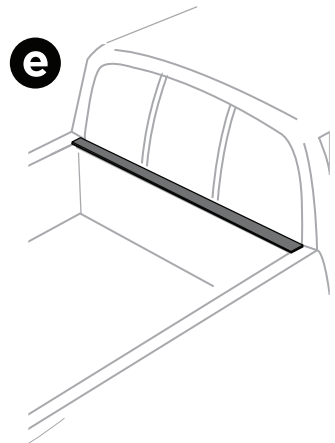
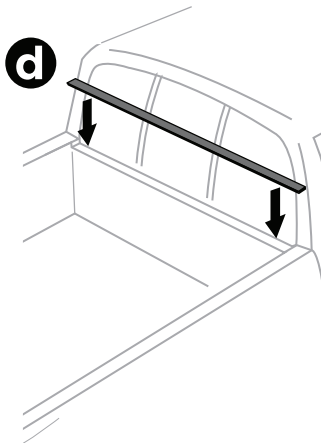
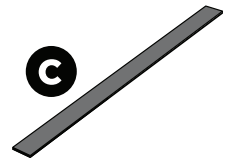
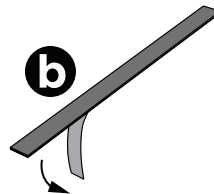
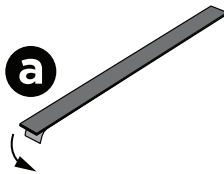
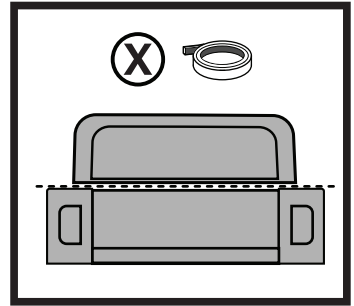
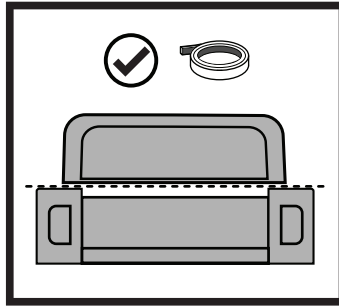

**SEAL STRIP**

Only needed  
for certain models



# 1 APPLYING SEAL STRIP ⓘ

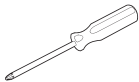
IF THE TRUCK'S FRONT BED RAIL IS LOWER THAN THE SIDES, USE THE PROVIDED WEATHER SEAL STRIPS. GAPS ON THE FRONT BED AND TAILGATE CAN CAUSE NOISE AND FLAPPING ISSUES WHILE DRIVING ALONG WITH WATER LEAKAGE.





### YOU NEED

Phillips-Head  
Screwdriver

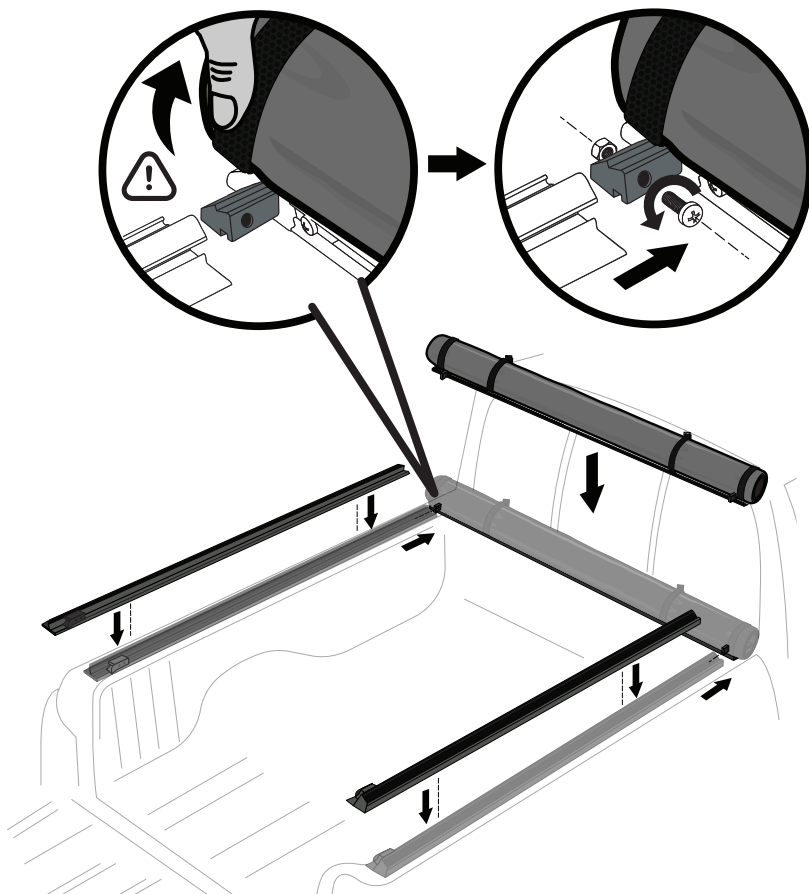


### ATTENTION

Lift tarp while inserting  
side rail to prevent  
tearing!

## 2 ASSEMBLING COVER ⓘ

- PLACE COVER ASSEMBLY ON FRONT TRUCK BED RAIL AGAINST THE CAB.
- LOOSEN THE SCREW IN BULKHEAD ASSEMBLY ON BOTH SIDES, THEN SLIDE IN THE SIDE RAILS.
- REINSTALL AND TIGHTEN SCREWS TO ATTACH SIDE RAILS TO COVER ASSEMBLY.



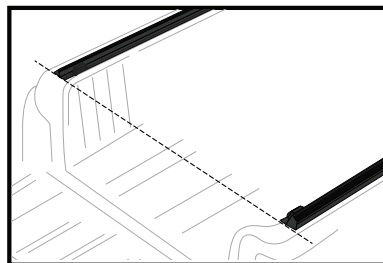
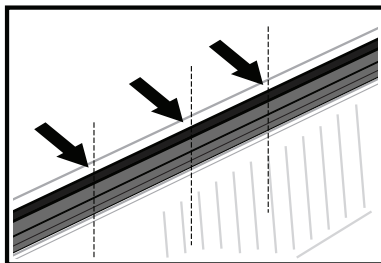
### NOTE: FOR 2024-UP MODEL YEARS

MOVE THE COVER ASSEMBLY ~5/8" TOWARDS THE TAILGATE FOR BETTER ALIGNMENT.



### NOTE

Make sure the side rail  
lines up with the inner  
edge of the truck bed  
rail. Place the side rail  
evenly so that the  
distance between the  
rear end of the side rail  
to the tailgate is the  
same on both sides.



### 3 INSTALLING SIDE RAILS & CLAMPS ⓘ

- THE NUMBER OF CLAMPS EQUIPPED ON THIS BED COVER IS SPECIFIC TO THE MODEL AND BED SIZE. CONFIRM THE NUMBER (4/6/8) OF CLAMPS INSIDE THE HARDWARE PACKAGE.
- THEN EVENLY PLACE THE SUPPLIED CLAMPS ALONG THE SIDE RAILS ACCORDING TO THE POSITIONAL CONFIGURATION A/B/C BASED ON THE NUMBERS OF CLAMPS.
- ATTACH THE CLAMPS TO THE SIDE RAIL AND THE TRUCK BED RAILS. DO NOT TIGHTEN CLAMPS UNTIL COVER IS PROPERLY FITTED.

**NOTE:** FOR TOYOTA AND NISSAN MODELS WITH FACTORY UTILITY TRACKS, REFER TO PAGE 11 FOR SPECIAL INSTRUCTION ON UTILITY TRACK BRACKET INSTALLATION.



#### NOTE



**DO NOT**  
over-tighten  
the clamps

#### ATTENTION



Inside  
Channel



Out of  
Channel

**a**

Rear

**≤ 5.2' BED**

Front

**2 x 2 = 4 CLAMPS**
**b**

Rear

**5.5' - 6.75' BED**

Front

**2 x 3 = 6 CLAMPS**
**c**

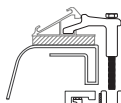
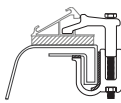
Rear

**8' BED**

Front

**2 x 4 = 8 CLAMPS**

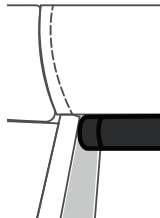
#### ATTENTION!



Clamps **MUST** BE attached securely to the **metal part** of the truck bed rail lips; small holes might need to be cut on the bed liner.

For Nissan Frontier Model Years **2022 and up**, install clamps directly to bed rail.

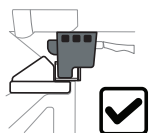



**ATTENTION**


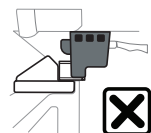
Incorrect positioning of the crossbars can cause water to pool on the cover.

**ATTENTION**


Horizontal crossbars are arched by design to help drain and prevent water pooling. Make sure the arched side is facing up during installation.


**WARNING!**


**In Channel**



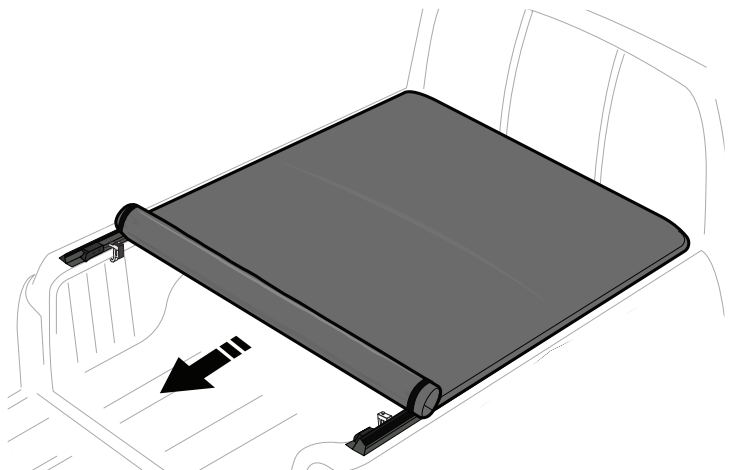
**NOT In Channel**

**NOTE**

For latching issue, refer to **PAGE 12** for trouble shooting instruction.

## 4 ROLLING OUT THE COVER ⓘ

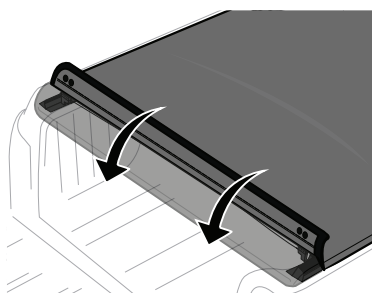
- UNHOOK THE SAFETY STRAPS.
- MAKE SURE THE ENDS OF THE CROSSBARS ARE RESTING ON THE SIDE RAIL LEDGES AND CROSSBARS ARE ARCHED UPWARD.



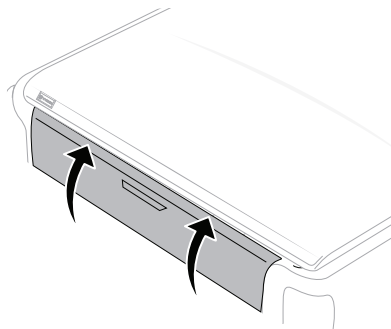
## 5 LOCKING THE COVER ⓘ

- PUSH DOWN THE END OF THE COVER WITH SUFFICIENT FORCE TO CLOSE IT.
- THE COVER MUST BE CLOSED FIRST BEFORE YOU SHUT THE TAILGATE.

**a**



**b**



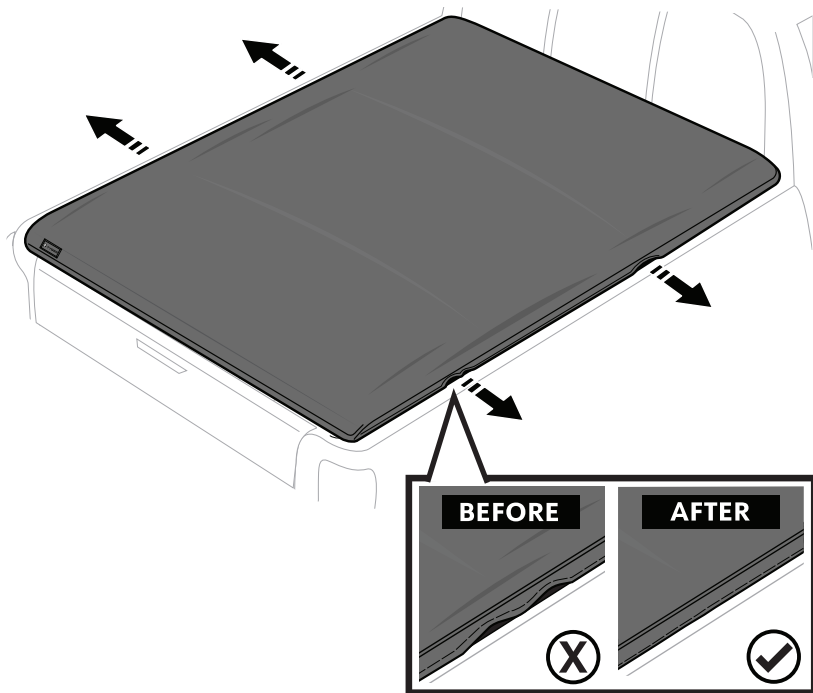
**CLICK!!!**


**NOTE**


Velcro Strips must be fully fastened to prevent water from leaking in.

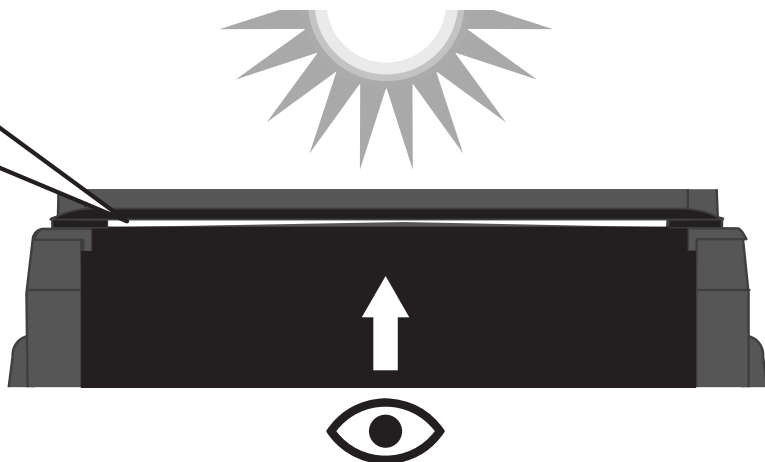
## 6 STRAIGHTENING OUT THE COVER

- STRETCH OUT THE COVER TARP ON BOTH SIDES TO REMOVE ANY WRINKLES AND MAKE SURE BOTH VELCRO STRIPS ARE PROPERLY FASTENED AND SEALED TO PREVENT WATER LEAK.

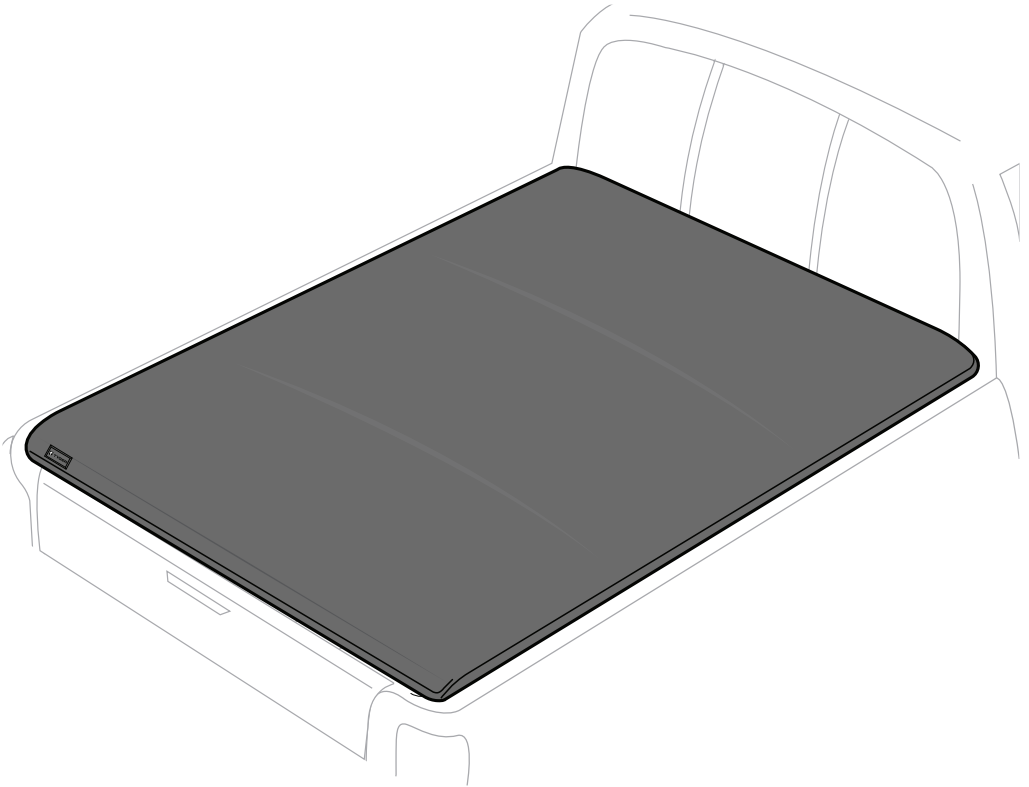

**SEAL STRIP**


## 7 CHECKING FOR GAPS

- WITH THE TAILGATE OPEN, VISUALLY INSPECT FOR LIGHT LEAKING THROUGH THE GAPS. APPLY ADDITIONAL SEALING STRIPS TO FILL THE GAPS THEN REINSPECT AND REPEAT.



# ***INSTALLATION COMPLETE!!!***



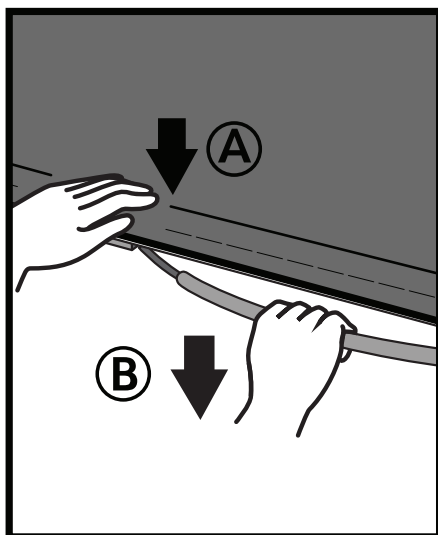
# AFTER INSTALLATION

## 8 RELEASING THE COVER ⓘ



### NOTE

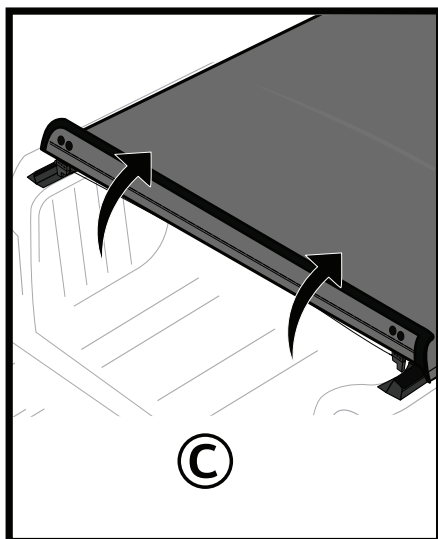
Pressing down on the cover edge will improve the release.



• OPEN THE TAILGATE AND PUSH DOWN AGAINST THE COVER EDGE WITH ONE HAND.



• PULL ON LATCH CABLE TO RELEASE THE COVER WITH THE OTHER HAND.



• ROLL UP THE COVER CLOSELY.


**ATTENTION**

Make sure the cover is free from any debris before rolling it up. Safety straps must be buckled and tightened before driving.

**NOTE**

Cover may not fully cover all the way to the outer edges of the bed rails due to small variance in bed sizes from different year models.



DO NOT  
overload cargo



Secure strap buckles  
before driving

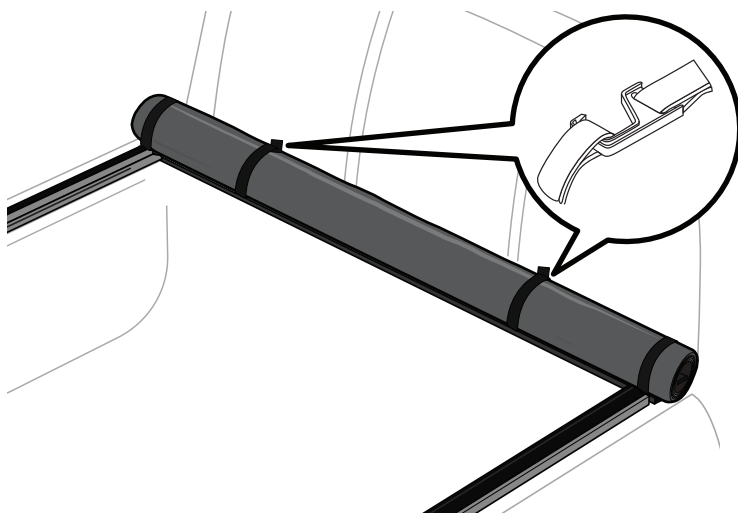
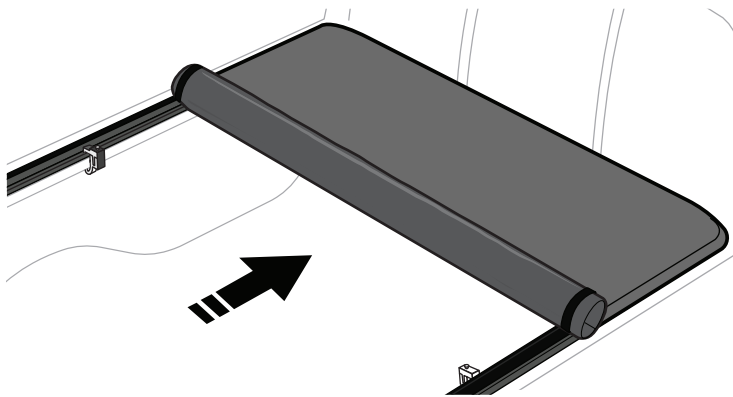


Remove snow before  
rolling up cover



Use water and  
soap to clean.  
Avoid abrasive  
chemical cleaners

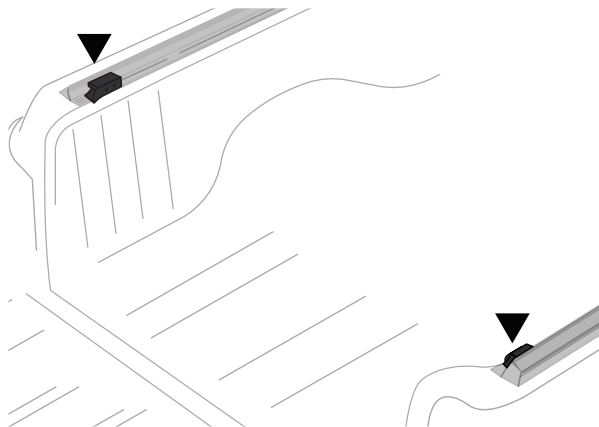
## 9 ROLLING UP THE COVER ⓘ



# 10 SELF-MAINTENANCE THE TENSION CONTROL SYSTEM ⓘ

**NOTE:** TENSION PLATE ADJUSTMENT IS NOT REQUIRED FOR BRAND-NEW TONNEAU COVERS.

IF THE TENSION BETWEEN THE BULKHEAD & TENSION PLATE HAS BECOME LOOSE OR TIGHT OVER TIME, YOU CAN ADJUST THE TENSION PLATE POSITION TO IMPROVE THE TENSION CONTROL.

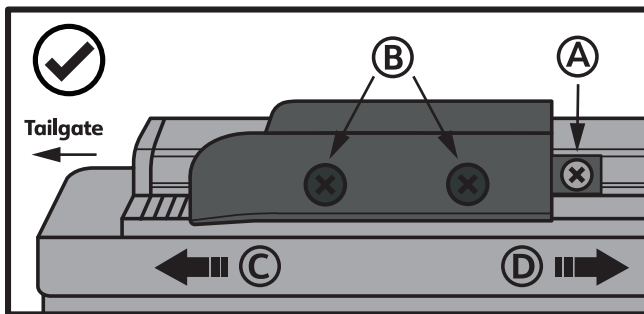


## NOTE

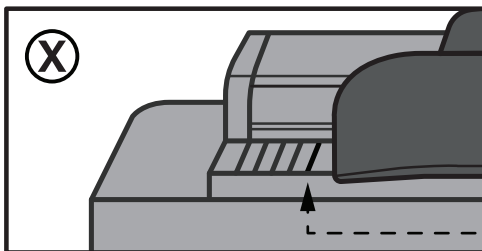
Only move one increment at a time. Each increment gives you 1/8" of tension adjustment. Apply the same adjustment to both sides' tension plates.

## YOU NEED

Phillips-Head  
Screwdriver



- (A)** • FIRST LOOSEN THE FRONT SCREW IN THE RAIL CHANNEL. DO NOT FULLY REMOVE THIS SCREW.
- (B)** • THEN LOOSEN THE 2 SCREWS IN THE TENSION PLATE BLOCK. DO NOT FULLY REMOVE THESE SCREWS. THIS ALLOWS THE TENSION PLATE TO SLIDE BACK AND FORTH.
- (C)** • TO INCREASE THE TENSION (LATCHING IS TOO LOOSE), MOVE THE TENSION PLATE TOWARDS THE TAILGATE. RE-TIGHTEN FIRST THE (A) THEN (B) SCREWS.
- (D)** • TO DECREASE THE TENSION (LATCHING IS TOO TIGHT), MOVE THE TENSION PLATE TOWARDS THE FRONT. RE-TIGHTEN FIRST THE (A) THEN (B) SCREWS.

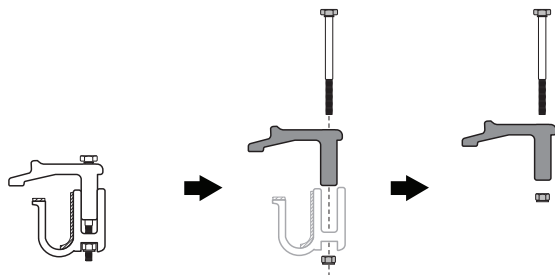


## ⚠ ATTENTION

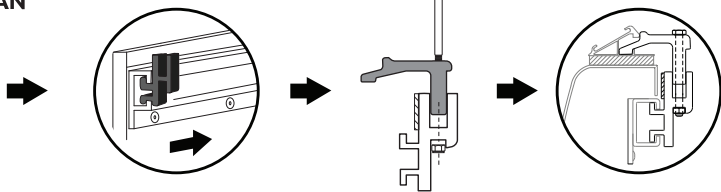
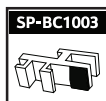
• **DO NOT** ADJUST THE TENSION PLATE BEYOND THE LAST INCREMENT LINE.

# 11 FOR MODELS WITH UTILITY TRACKS

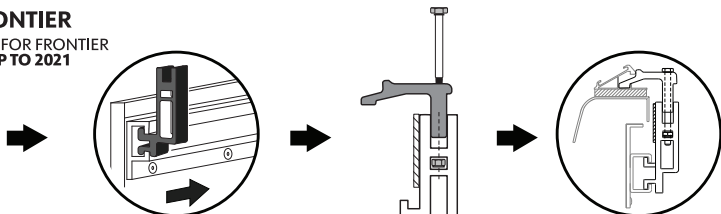
**NOTE:** REFER TO **PAGE 4** FOR CLAMP ASSEMBLY BREAKDOWN IN RELATION TO QTYS VS BED SIZE



For **NISSAN TITAN**

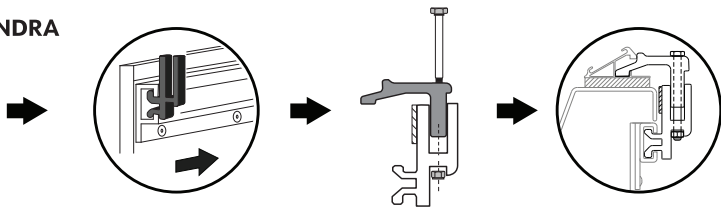


For **NISSAN FRONTIER**  
ONLY REQUIRED FOR FRONTIER  
MODEL YEARS **UP TO 2021**

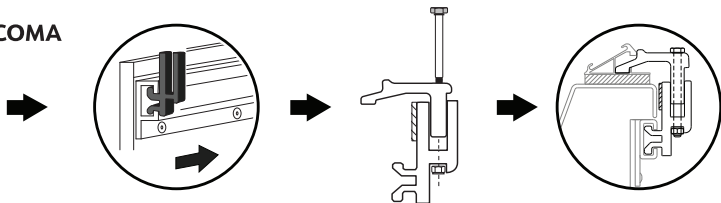
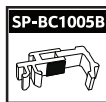


**!** FOR NISSAN FRONTIER MODEL YEARS **2022 AND UP**, REFER TO **STEP 3** TO INSTALL CLAMPS DIRECTLY TO THE BED RAILS.

For **TOYOTA TUNDRA**

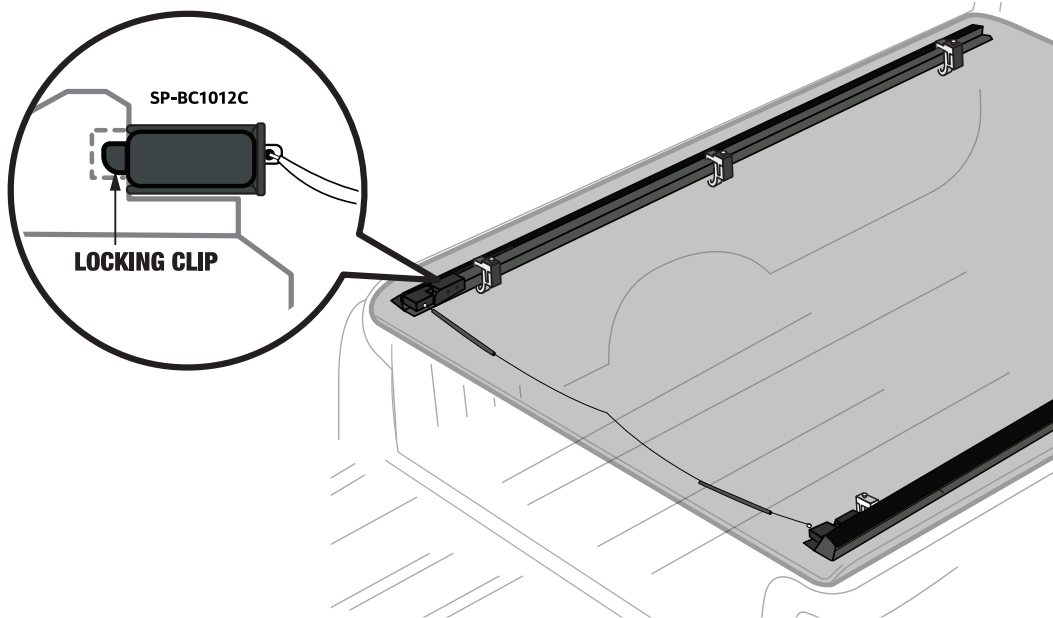


For **TOYOTA TACOMA**

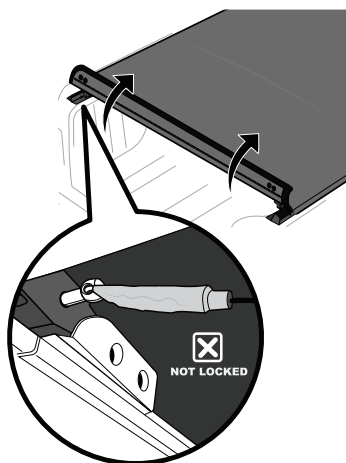


## 12 COVER DOESN'T STAY LATCHED?

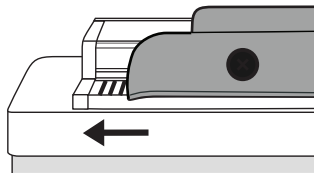
- MAKE SURE THE LOCKING CLIP ON BOTH SIDES ARE COMPLETELY INSERTED INTO THE CHANNEL ON THE SIDE RAILS TO AVOID END OF THE COVER BECOMING UNLATCHED.



- ### 13
- IF COVER DOESN'T STAY CLOSED AND YOU FIND THE LOCKING CLIP IS NOT FULLY INSERTED.



- ### 14
- IF NEEDED, FOLLOW INSTRUCTIONS IN **PAGE 10** TO ADJUST THE TENSION PLATE.



- ### 15
- MAKE SURE THE LOCKING CLIP ON BOTH SIDES ARE INSERTED INTO THE CHANNEL ON THE SIDE RAILS.

