



TYGER®

STAR ARMOR®

TG-AM2C20238

BEFORE INSTALLATION

READ INSTRUCTIONS CAREFULLY BEFORE STARTING INSTALLATION. REMOVE CONTENTS FROM BOX AND VERIFY ALL PARTS ARE PRESENT. FAILURE TO IDENTIFY DAMAGE BEFORE INSTALLATION COULD LEAD TO A REJECTION OF ANY CLAIM. IF MISSING PARTS OR ANY DAMAGE FOUND, PLEASE TAKE A PICTURE FOR THE CLAIM PURPOSE. TO FILE YOUR CLAIM, PLEASE VISIT: WWW.TYGERAUTO.COM/CONTACT

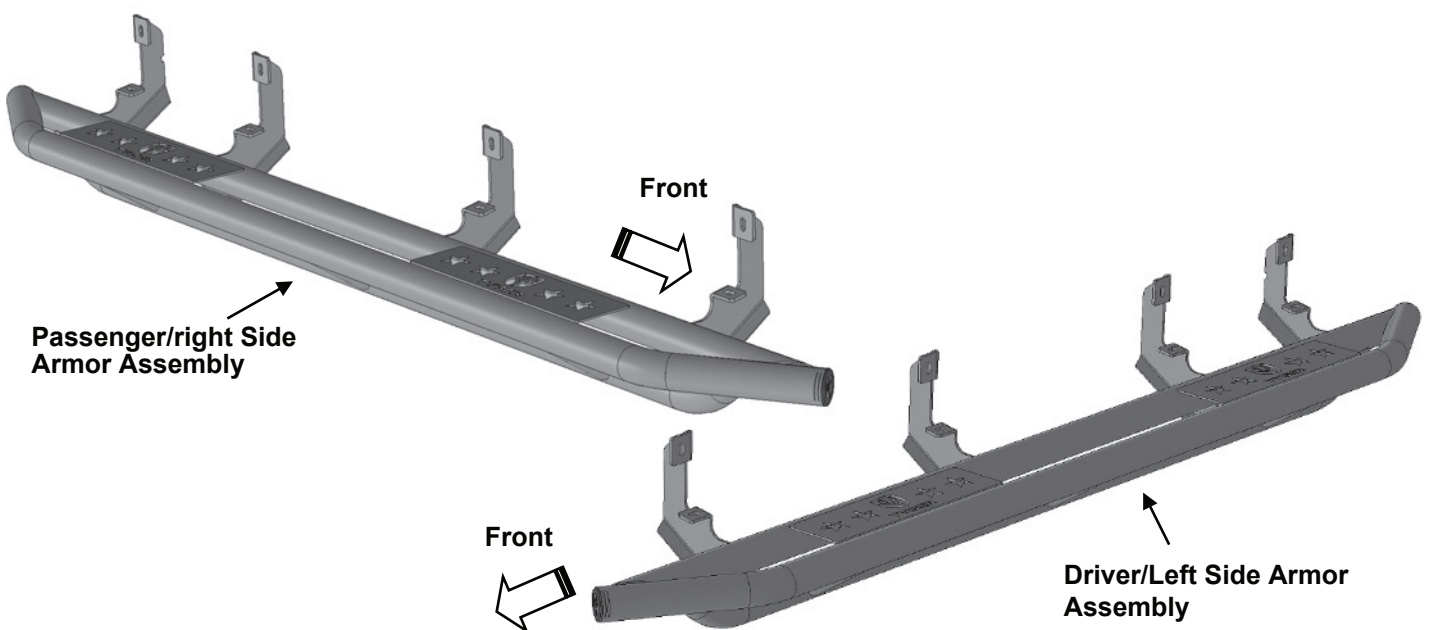
TORQUE VALUES

Fastener Size	Class 8.8 Torque (ft-lbs)	Class 10.9 Torque (ft-lbs)
6mm	6-7	6-7
8mm	15-16	22-23
10mm	31-32	44-45
12mm	54-55	78-79
14mm	87-88	125-126

NOTE: Assistance is recommended.

Parts List

- x1 Driver/left side TYGER Armor
- x1 Passenger/right side TYGER Armor
- x16 8mm x 30mm Hex Bolts
- x16 8mm Lock Washers
- x16 8mm x 24mm x 2mm Flat Washers





TYGER[®]

STEP 1

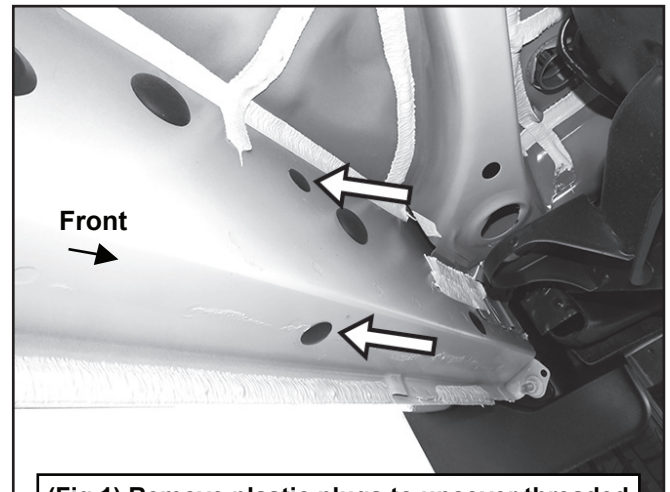
Start the installation under the driver/left side of the vehicle. Locate the 4 plugs along the bottom edge of the body, (Figs 1-3). Remove the plastic plugs from each mounting location. Directly above each threaded insert is a top mounting location on the side of the body panel. Hold Side Armor up in place to help determine the mounting holes to use along the body.

NOTE: Remove excess sealant or paint from area around threads. Thread an 8mm Hex Bolt into the threaded inserts to clear paint as required.

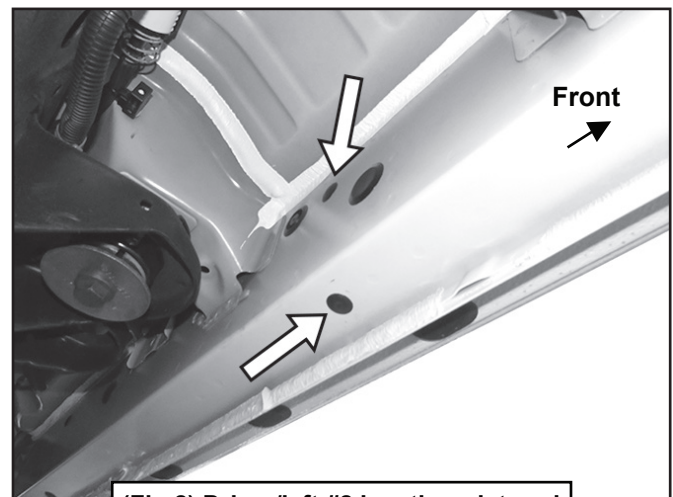
STEP 2

Carefully unwrap and select the driver/left Side Armor.

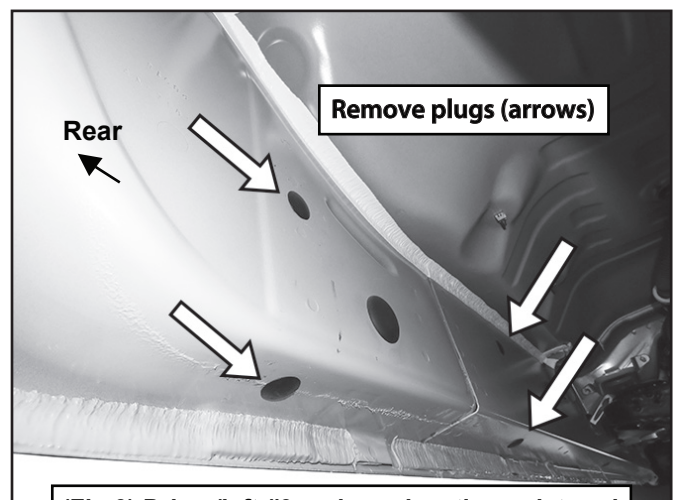
NOTE: When installed correctly, the tabs on the welded brackets will face towards the front of the vehicle. Use the illustration above to help identify the correct Side Armor.



(Fig 1) Remove plastic plugs to uncover threaded inserts. Driver/left front location pictured



(Fig 2) Driver/left #2 location pictured



(Fig 3) Driver/left #3 and rear locations pictured



TYGER®

STEP 3

With assistance, attach the welded Brackets on the Side Armor to the body panel using (8) 8mm Hex Bolts, (8) 8mm Lock Washers and (8) 8mm Flat Washers, (Figs 4-5).

STEP 4

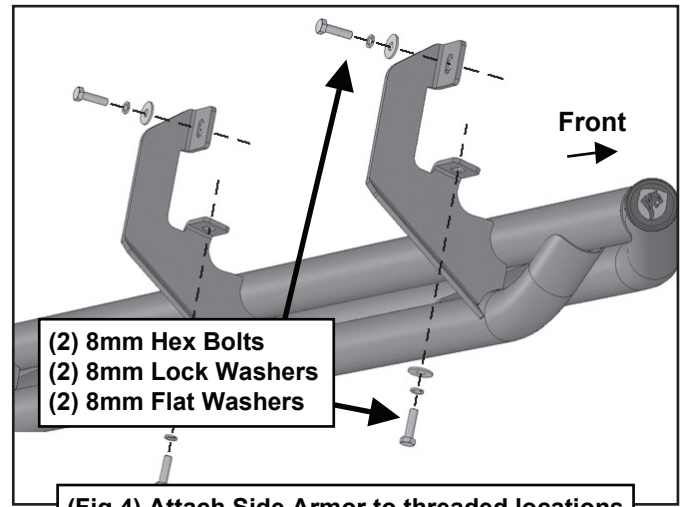
Level and adjust the Side Armor properly and tighten all hardware.

STEP 5

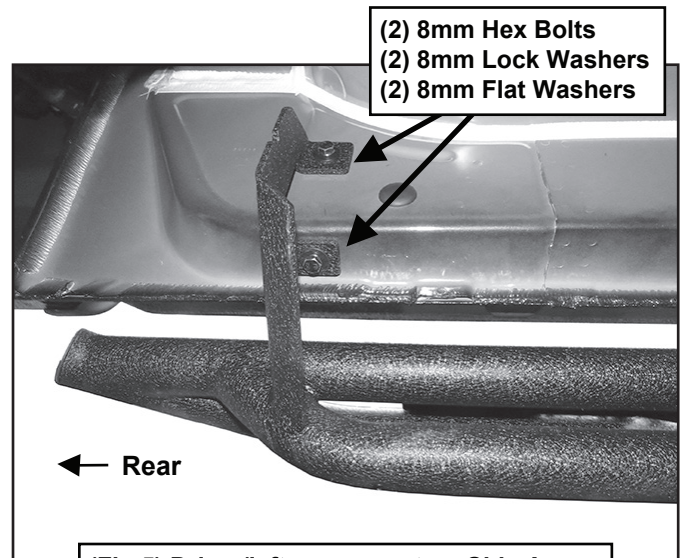
Repeat Steps 1-4 for passenger/right Side Armor assembly installation.

STEP 6

Do periodic inspections to the installation to make sure that all hardware is secure and tight.



(Fig 4) Attach Side Armor to threaded locations



(Fig 5) Driver/left rear mount on Side Armor

