



TYGER®

TYGER ACCESS

TG-AS2T24034

Scan to Download the
Latest Digital Version



BEFORE INSTALLATION

READ INSTRUCTIONS CAREFULLY BEFORE STARTING INSTALLATION. REMOVE CONTENTS FROM BOX AND VERIFY ALL PARTS ARE PRESENT. FAILURE TO IDENTIFY DAMAGE BEFORE INSTALLATION COULD LEAD TO A REJECTION OF ANY CLAIM. IF MISSING PARTS OR ANY DAMAGE FOUND, PLEASE TAKE A PICTURE FOR THE CLAIM PURPOSE. TO FILE YOUR CLAIM, PLEASE VISIT: WWW.TYGERAUTO.COM/CONTACT

TORQUE VALUES

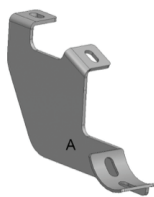
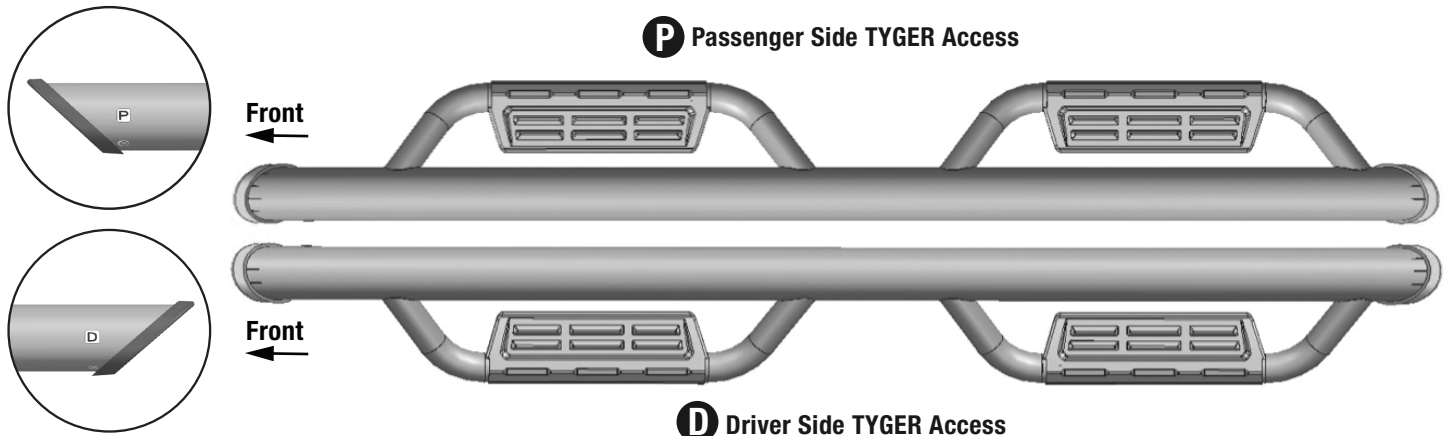
Fastener Size	Class 8.8 Torque (ft-lbs)	Class 10.9 Torque (ft-lbs)
6mm	6-7	6-7
8mm	15-16	22-23
10mm	31-32	44-45
12mm	54-55	78-79
14mm	87-88	125-126

- x1 Driver/Left Tyger Access **[D]**
- x1 Passenger/Right Tyger Access **[P]**
- x1 Driver/Left Front Mounting Bracket **[A]**
- x2 Driver/Left Center & Rear Mounting Brackets **[B]**
- x1 Passenger/Right Front Mounting Bracket **[C]**
- x2 Passenger/Right Center & Rear Mounting Brackets **[D]**
- x12 8-1.25mm x 30mm Hex Bolts
- x12 8-1.25mm x 25mm Combo Bolts
- x12 8mm x 24mm OD x 2mm Flat Washers
- x12 8mm Lock Washers

Parts List

Top View

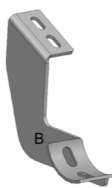
ATTENTION: Refer to **[D]** and **[P]** labelling on the side of the tubes to determine Driver and Passenger TYGER Access



x1

[A]

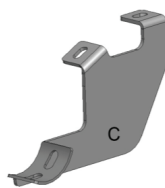
Driver/Left Front
Mounting Bracket



x2

[B]

Driver/Left Center & Rear
Mounting Brackets



x1

[C]

Passenger/Right Front
Mounting Bracket



x2

[D]

Passenger/Right Center & Rear
Mounting Brackets



x12 8-1.25mm x 25mm Combo Bolts



x12 8mm x 24mm OD x 2mm Flat Washers



x12 8-1.25mm x 30mm Hex Bolts

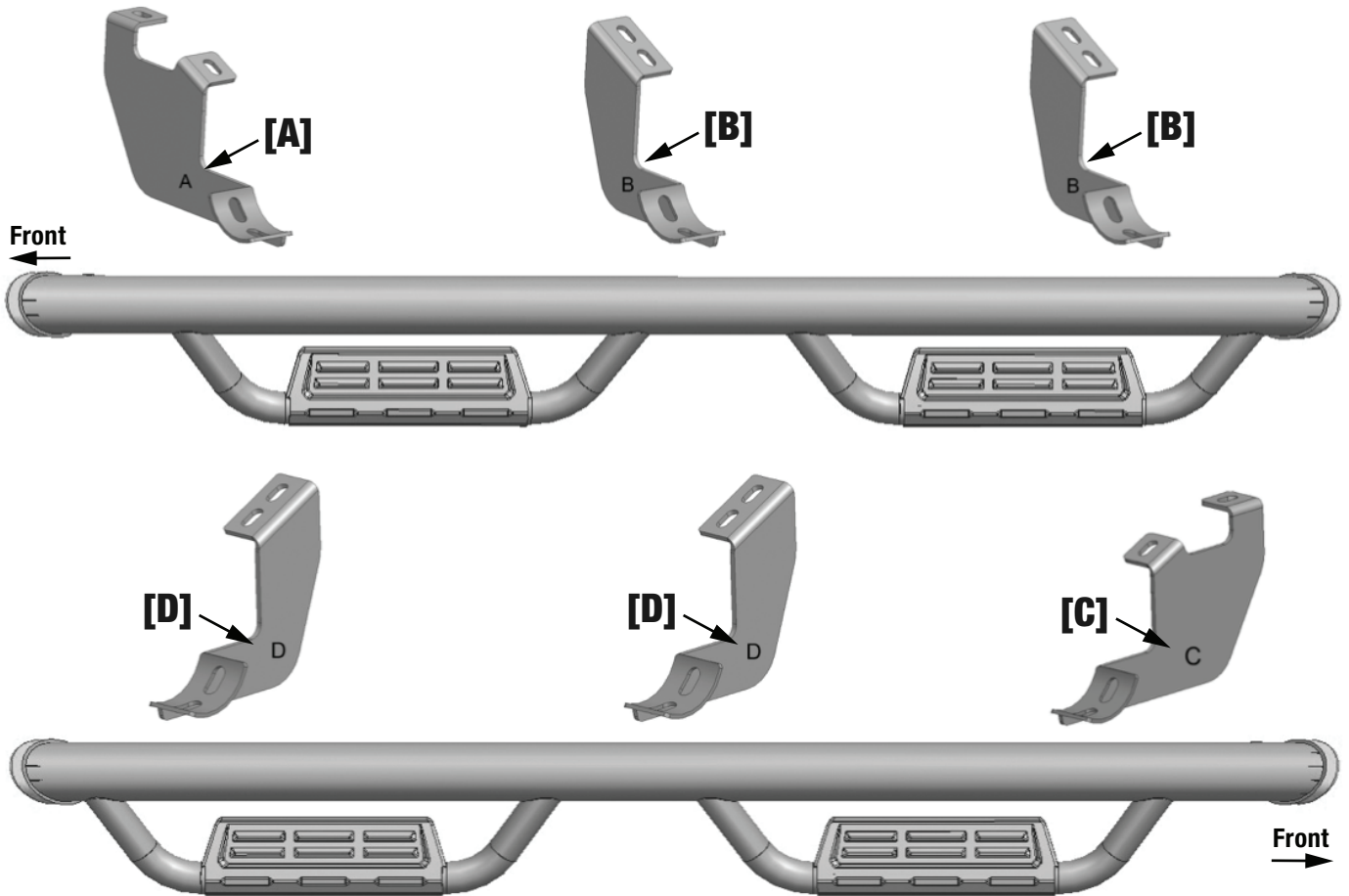


x12 8mm Lock Washers

Reference the letters printed on the brackets to determine mounting locations

Top View

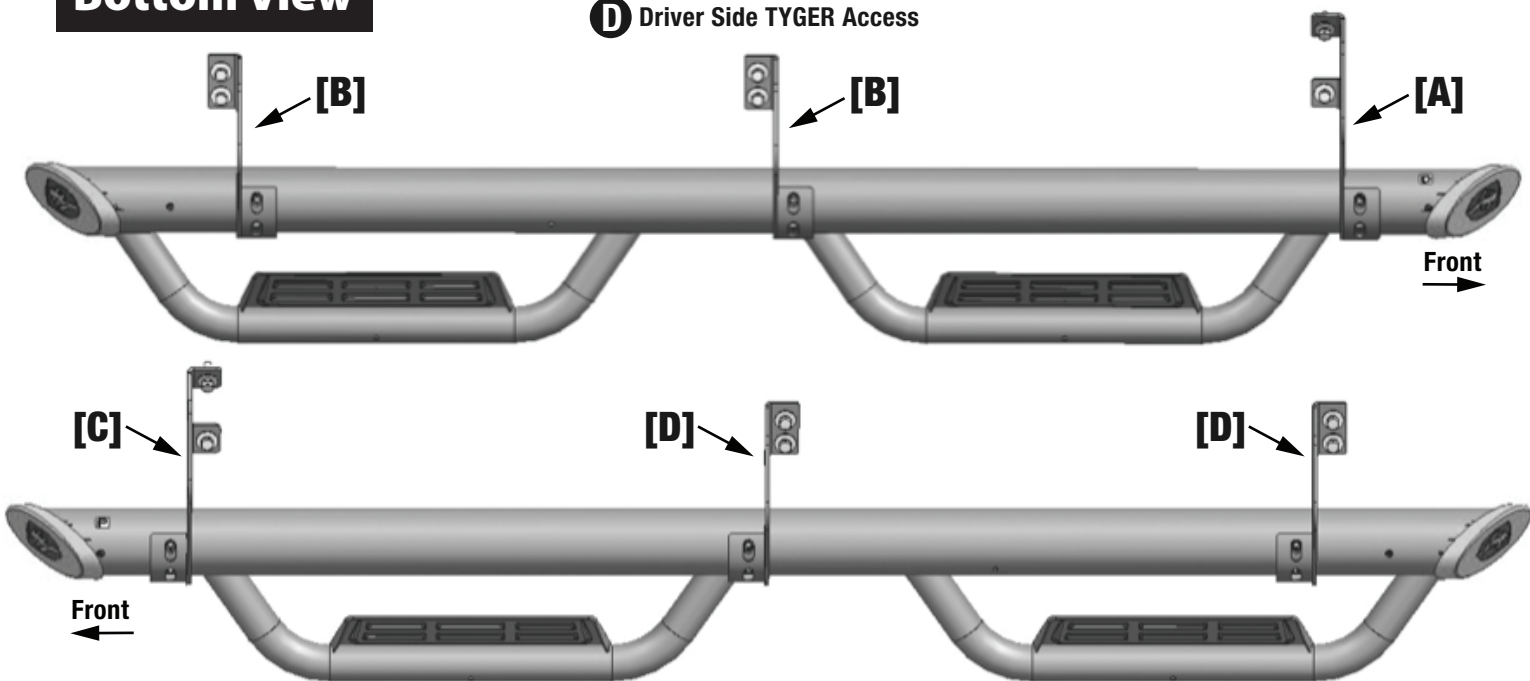
D Driver Side TYGER Access



P Passenger Side TYGER Access

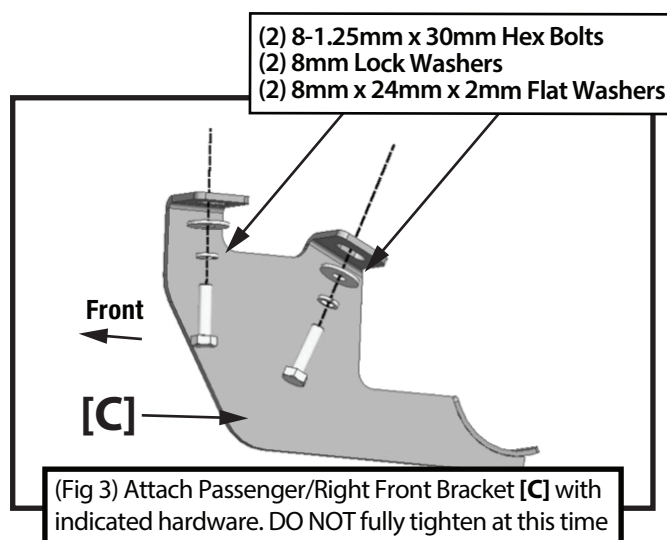
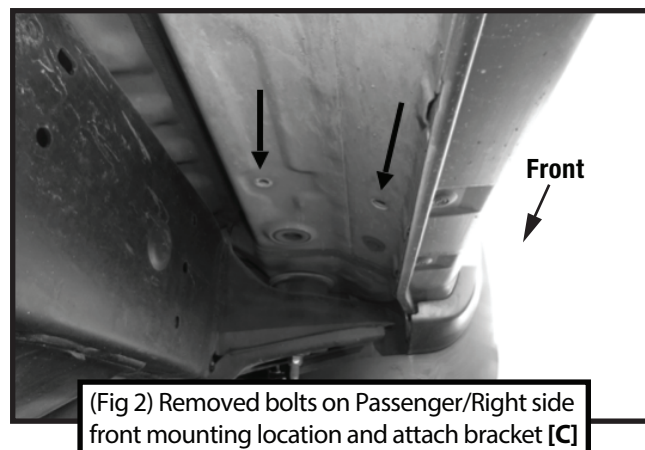
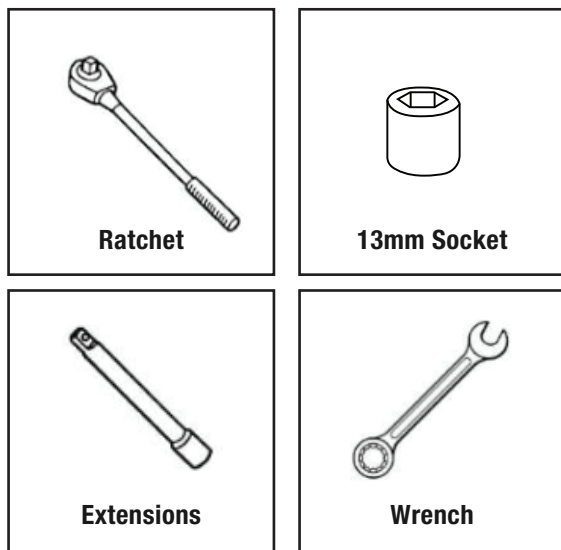
Bottom View

D Driver Side TYGER Access



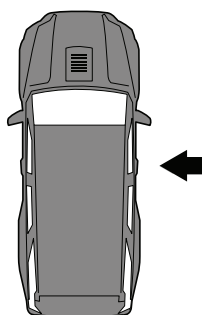
P Passenger Side TYGER Access

TOOLS REQUIRED

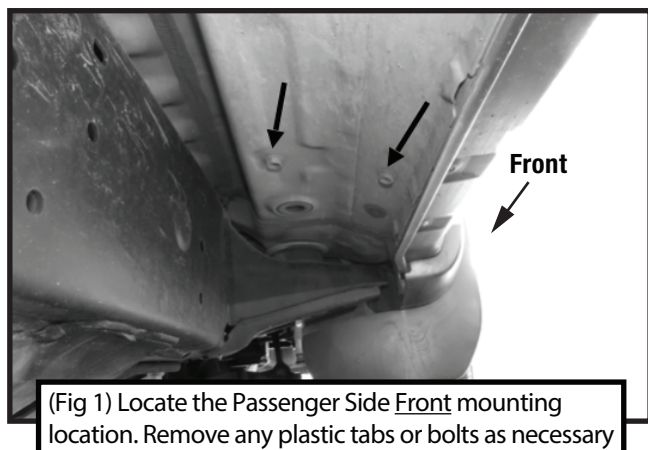


STEP 1 MOUNTING BRACKETS

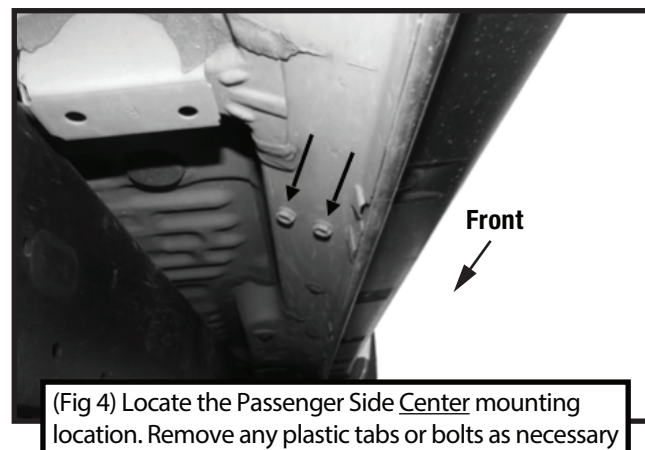
Follow (Fig 1 – 9) to attach the brackets to the Passenger Side.
Ensure all hardware is hand tightened for this step.

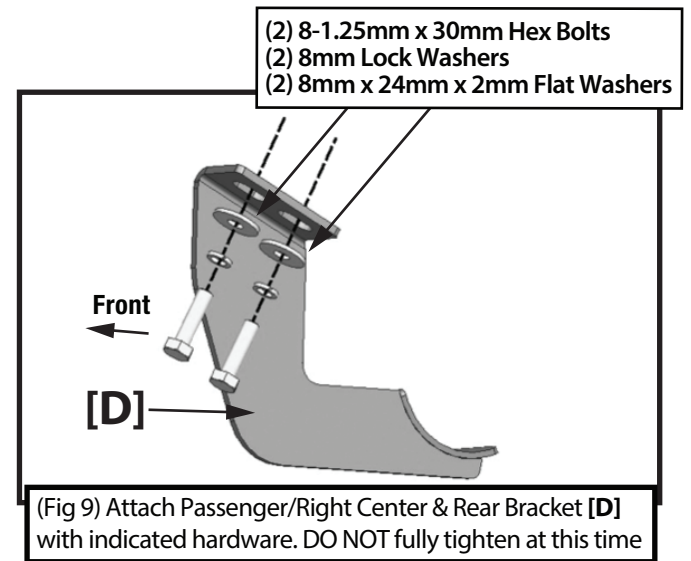
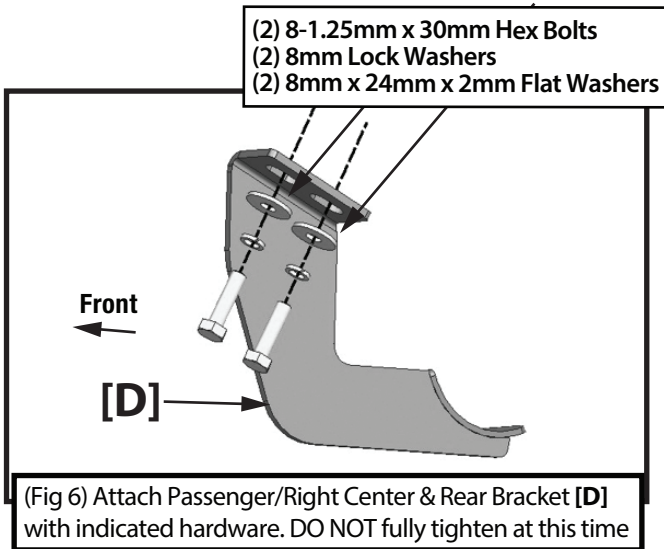
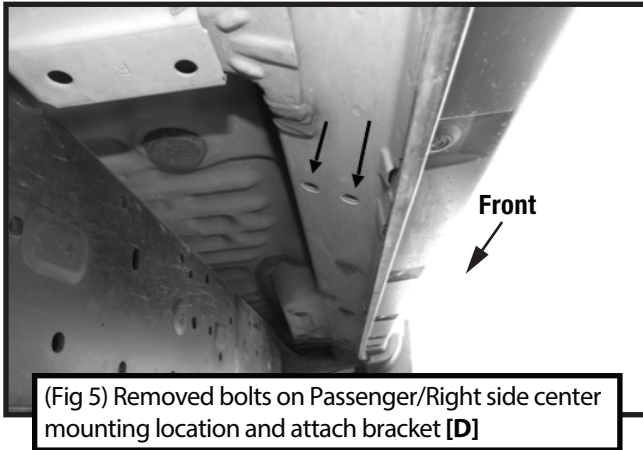


Passenger Front Mounting Area

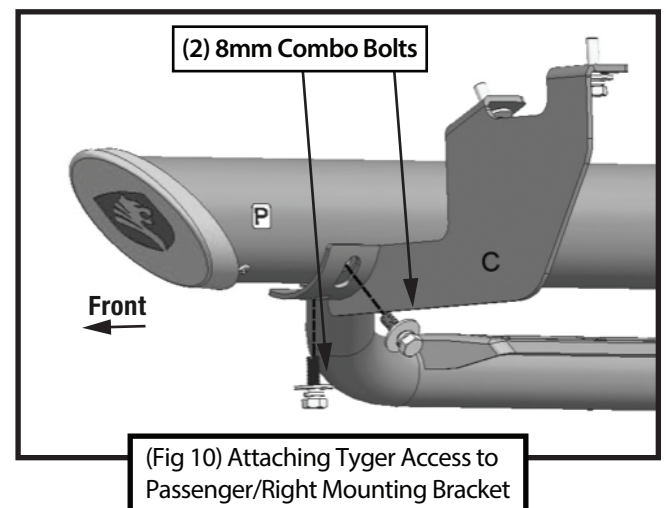
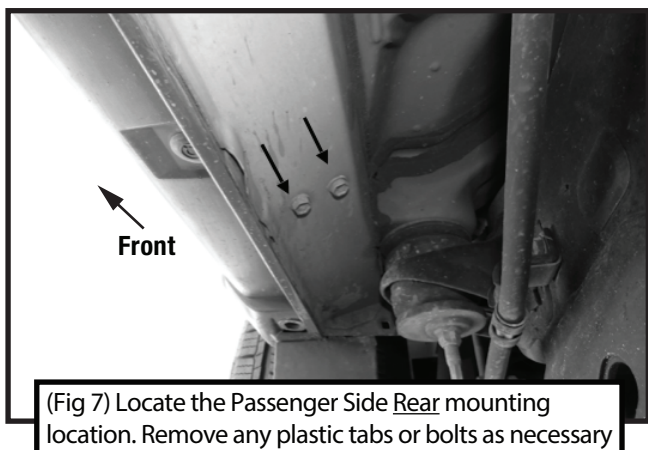


Passenger Center Mounting Area



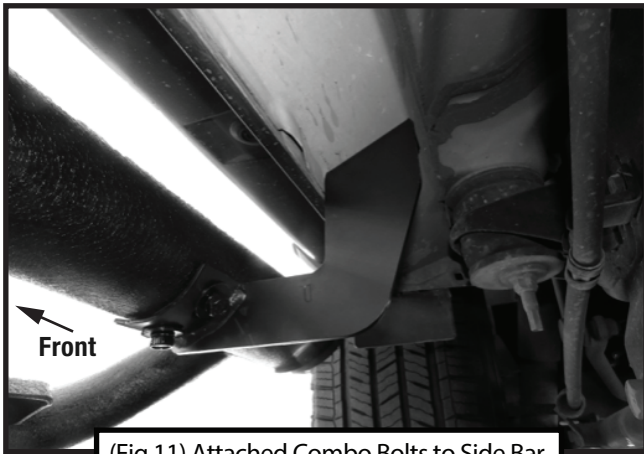


Passenger Rear Mounting Area



STEP 2 MOUNTING RUNNING BOARD

Follow (Fig 10-11) to install the TYGER Access Side Step on the Passenger/Right side. **Ensure all hardware is hand tightened at this point.**



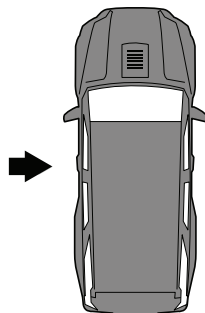
(Fig 11) Attached Combo Bolts to Side Bar

STEP 3 DRIVER SIDE

Repeat **STEPS 1-2** to install mounting brackets to the 3 mounting locations at Driver/Left side.

Use Front Mounting Bracket **[A]** instead of **[C]**;

Use Center & Rear Mounting Brackets **[B]** instead of **[D]**.



STEP 4 COMPLETION

Ensure TYGER Access is level and straightened, then **tighten all fasteners**. Installation is complete. Perform periodic inspections to the installation to make sure that all hardware is secure and tight.

