



TYGER®

TYGER FRONT BUMPER

TG-BP7T20567

Scan to Download the Latest Digital Version



BEFORE INSTALLATION

READ INSTRUCTIONS CAREFULLY BEFORE STARTING INSTALLATION. REMOVE CONTENTS FROM BOX AND VERIFY ALL PARTS ARE PRESENT. FAILURE TO IDENTIFY DAMAGE BEFORE INSTALLATION COULD LEAD TO A REJECTION OF ANY CLAIM. IF MISSING PARTS OR ANY DAMAGE FOUND, PLEASE TAKE A PICTURE FOR THE CLAIM PURPOSE. TO FILE YOUR CLAIM, PLEASE VISIT: WWW.TYGERAUTO.COM/CONTACT

TORQUE VALUES

Fastener Size	Class 8.8 Torque (ft-lbs)	Class 10.9 Torque (ft-lbs)
6mm	6-7	6-7
8mm	15-16	22-23
10mm	31-32	44-45
12mm	54-55	78-79
14mm	87-88	125-126

- (A)
- x1 TYGER Center Bumper
 - x1 Winch Tray Assembly
 - x2 Plastic Plugs for License Plates
 - x1 2000mm Edge Trim
 - x10 Zip Ties (2.75x1x200)
 - x1 License Plate Bracket
 - x1 Winch Control Unit Bracket
 - x1 6mm Wrench
 - x3 8mm-1.25mmx30mm Cooler Relocation Bolt Plates
 - x1 8mm-1.25mmx25mm Winch Control Unit Bolt Plate
 - x6 12mm x 24mm x 2.5mm Flat Washers

- x2 12mm x 32mm x 3mm Flat Washers
- x2 12mm x 44mm x 4mm Flat Washers
- x3 8mm x 24mm x 2mm Flat Washers
- x4 10mm x 20mm x 2mm Flat Washers
- x1 8mm x 16mm x 1.6mm Flat Washer
- x4 6mm x 18mm x 1.6mm Flat Washers
- x6 12mm Lock Washers
- x2 12-1.5mm x 120mm Hex Bolts
- x6 12-1.5mm x 45mm Hex Bolts
- x2 12mm Nylon Lock Nuts
- x2 10mm Nylon Lock Nuts
- x4 8mm Nylon Lock Nuts
- x2 6mm Nylon Lock Nuts

- x2 8mm Hex Nuts
- x2 6-1.0mm x 20mm Button Head Bolts
- x2 10-1.25mm x 30mm Button Head Bolts
- x4 6-1.0mm x 20mm Hex Bolt with flange

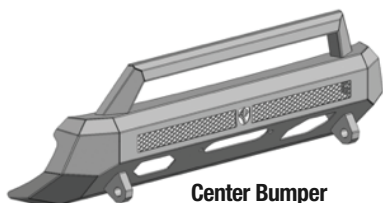
(B) Pre-Installed Parts for Fig 29

- x4 8mm x 1.25mm x 25mm Hex Bolts
- x8 8mm x 24mm Flat Washers
- x4 8mm Lock Washers
- x4 8mm Hex Nuts

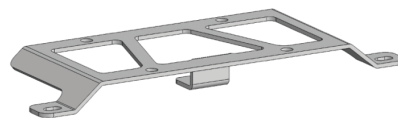
(C) Hardware Bag for LED Light Bar

- x2 8mm Lock Washers
- x2 8mm x 24mm Flat Washers
- x2 8mm x 1.25mm x 16mm Hex Bolts

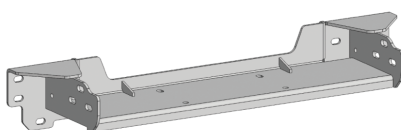
Parts List



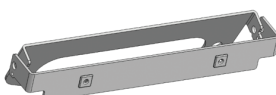
Center Bumper



Winch Control Unit Bracket



Winch Tray Assembly



License Plate Bracket



- x2 8-1.25mm x 16mm Hex Bolts
- x2 12-1.5mm x 120mm Hex Bolts
- x6 12-1.5mm x 45mm Hex Bolts
- x4 8mm x 1.25mm x 25mm Hex Bolts



- x6 8mm Lock Washers
- x6 12mm Lock Washers



- x2 12mm x 32mm x 3mm Flat Washers
- x2 12mm x 44mm x 4mm Flat Washers
- x6 12mm x 24mm x 2.5mm Flat Washers
- x4 10mm x 20mm x 2mm Flat Washers
- x1 8mm x 16mm x 1.6mm Flat Washer
- x4 6mm x 18mm x 1.6mm Flat Washers
- x13 8mm x 24mm x 2mm Flat Washers



- x2 10mm Nylon Lock Nuts
- x4 8mm Nylon Lock Nut
- x2 6mm Nylon Lock Nuts
- x2 12mm Nylon Lock Nuts



- x2 10-1.25mm x 30mm Button Head Bolts
- x2 6-1.0mm x 20mm Button Head Bolts



- x4 6-1.0mm x 20mm Hex Bolts with flange



- x1 8mm-1.25mm x 25mm Winch Control Unit Bolt Plate



- x3 8mm-1.25mm x 30mm Cooler Relocation Bolt Plates



- x1 6mm Wrench



- x6 8mm Hex Nuts

NOTE: Total quantities from (A), (B) and (C)

TOOLS REQUIRED



Ratchet



Extensions



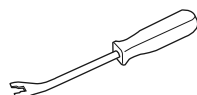
**10mm Socket
13mm Socket
14mm Socket
16mm Socket**



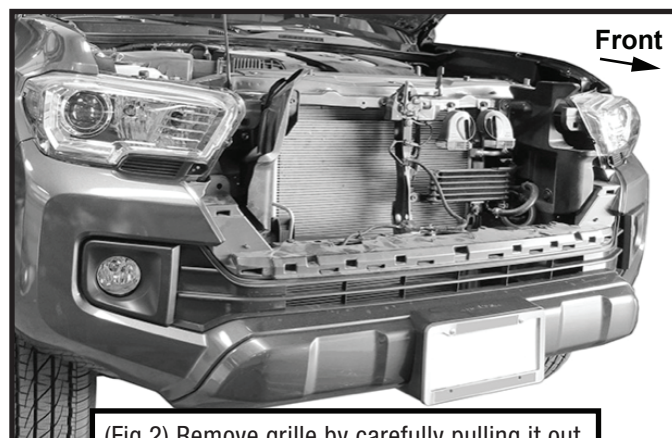
Wrench



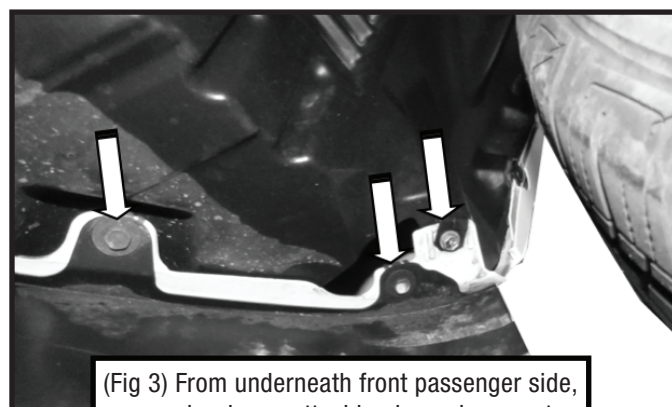
Plastic Cutting Tool



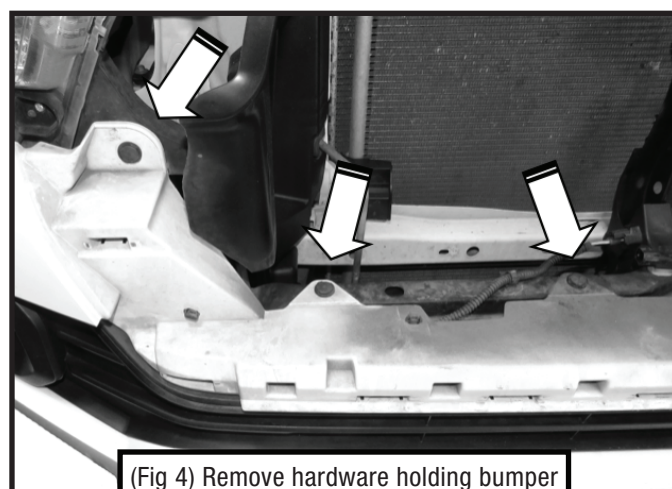
Clip Remover Tool



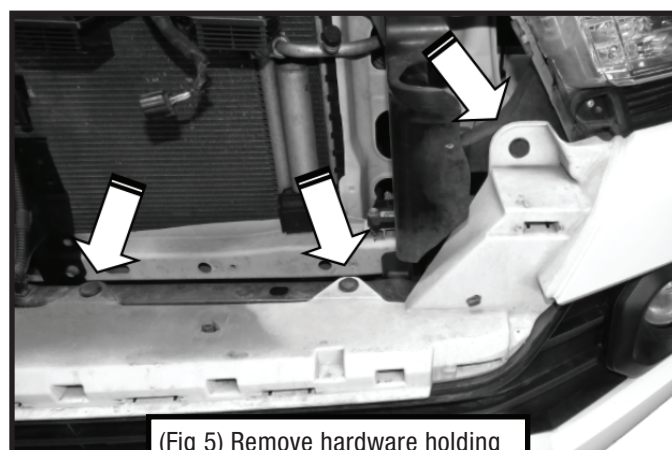
(Fig 2) Remove grille by carefully pulling it out.



(Fig 3) From underneath front passenger side, remove hardware attaching lower bumper to frame. Repeat on driver side



(Fig 4) Remove hardware holding bumper to vehicle from Passenger/Right

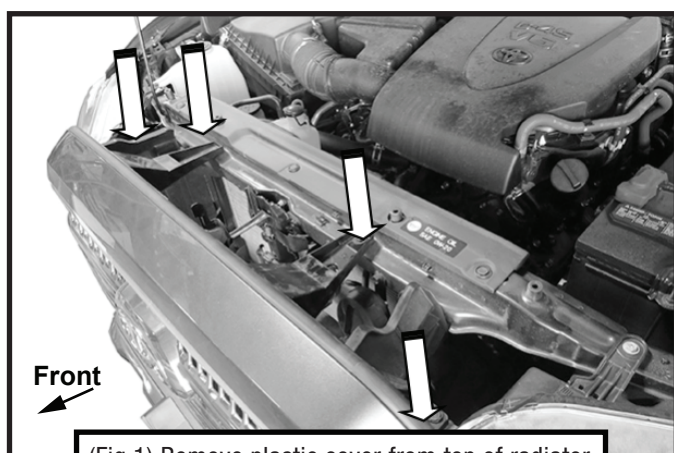


(Fig 5) Remove hardware holding bumper to vehicle from Driver/Left

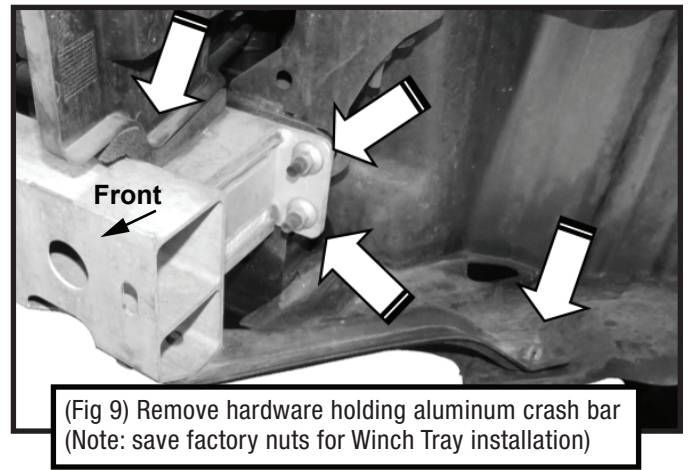
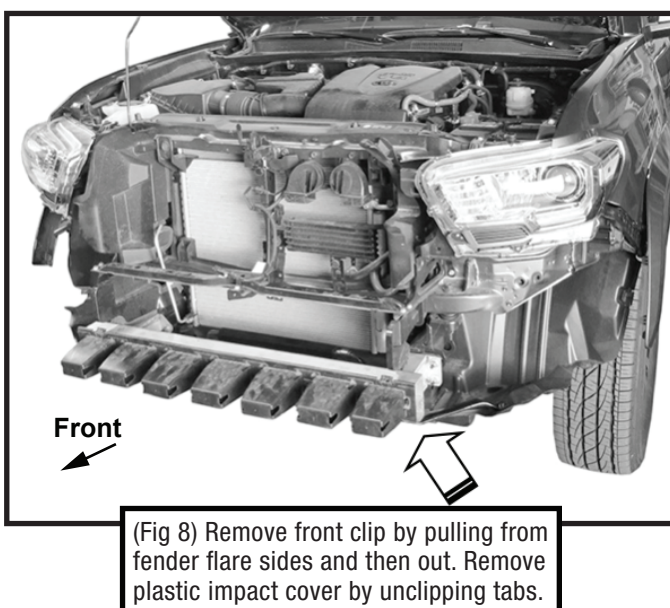
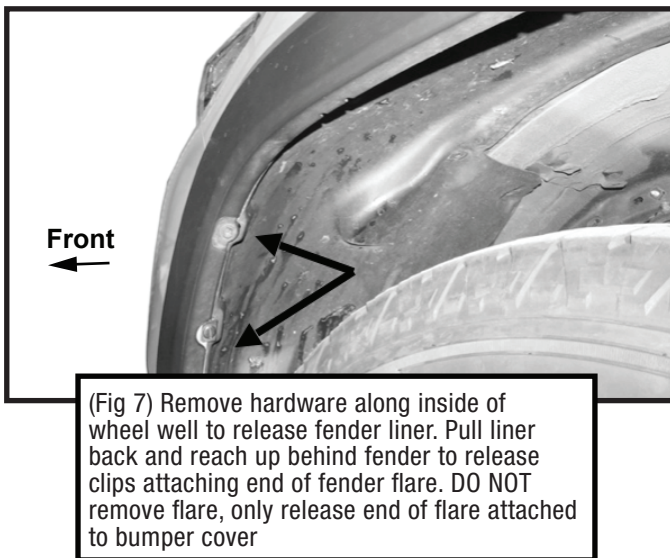
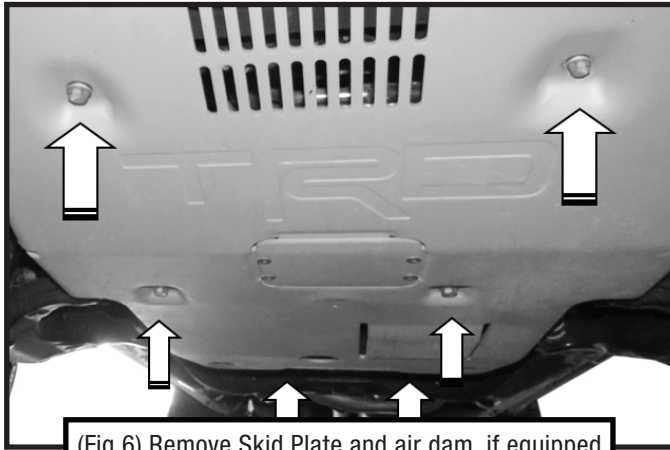
STEP 1

REMOVE FACTORY FRONT BUMPER ASSEMBLY

Follow (Fig 1 – 14) to remove front hardware and bumper, then relocate cooler.

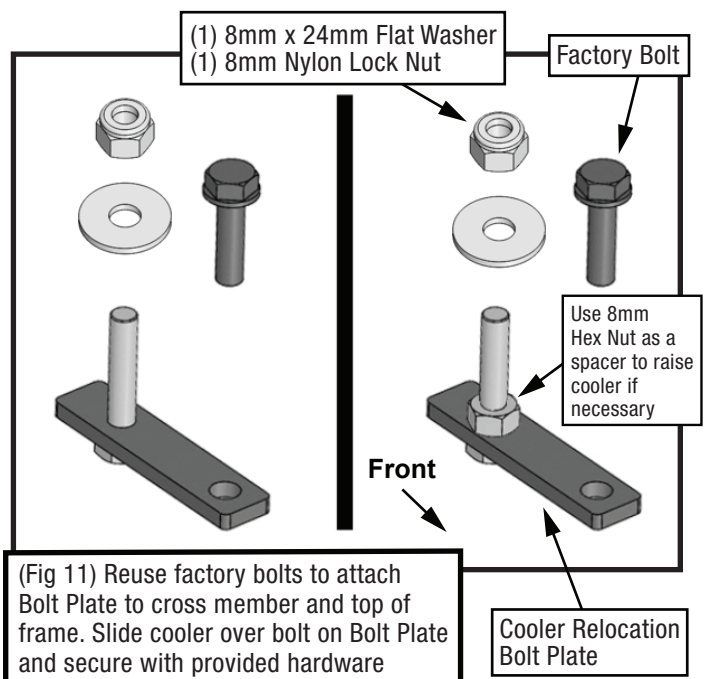
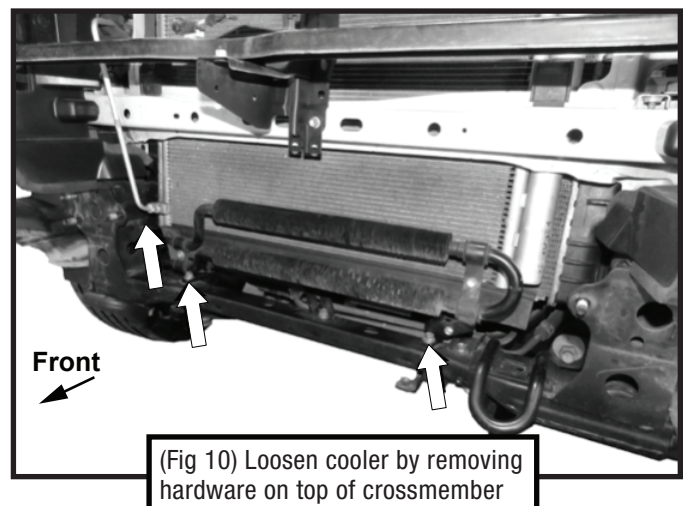


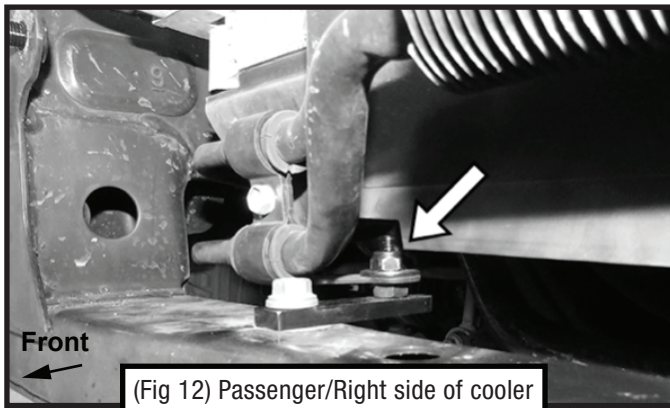
(Fig 1) Remove plastic cover from top of radiator. Remove (2) 6mm bolts and (2) plastic clips to remove grille. Note: Cover will not be reinstalled to allow access to winch clutch release lever



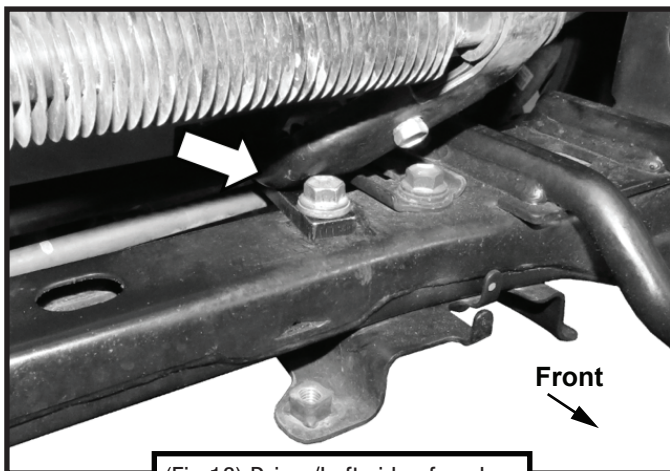
STEP 2 RELOCATE COOLER

Follow (Fig 10 – 14) to relocate cooler.

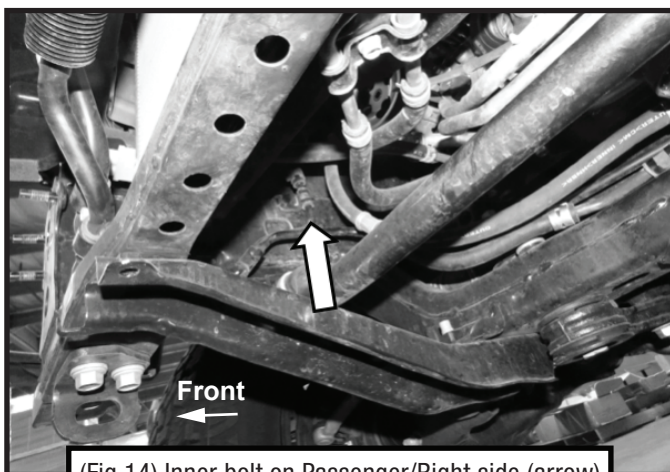




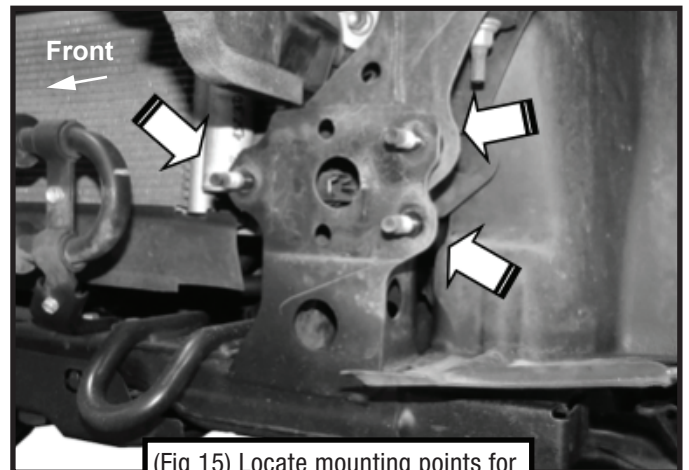
(Fig 12) Passenger/Right side of cooler relocated towards radiator (arrow)



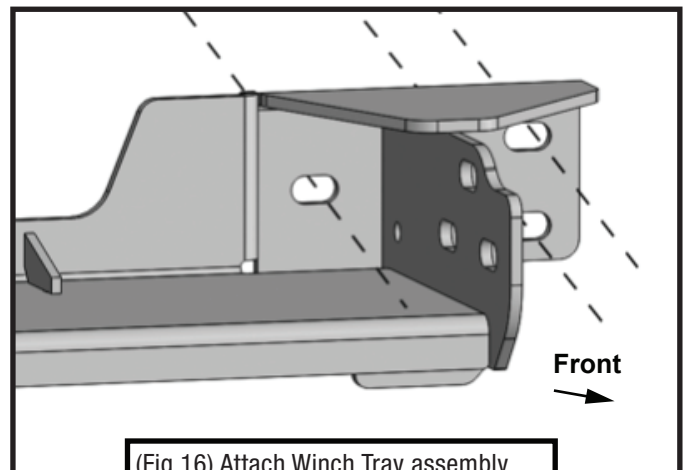
(Fig 13) Driver/Left side of cooler relocated towards radiator (arrow)



(Fig 14) Inner bolt on Passenger/Right side (arrow)

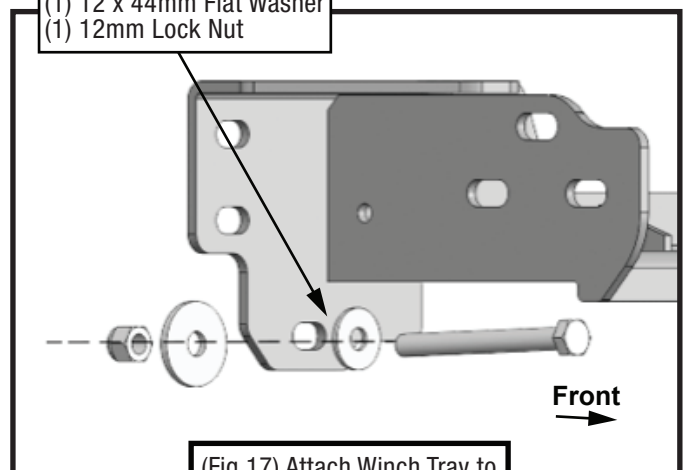


(Fig 15) Locate mounting points for Winch Tray assembly installation



(Fig 16) Attach Winch Tray assembly to mounting points reusing factory nuts

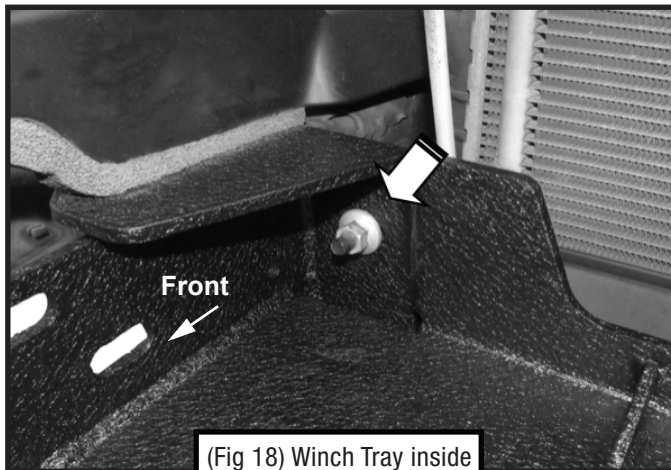
- (1) 12 x 120mm Hex Bolt
- (1) 12 x 32mm Flat Washer
- (1) 12 x 44mm Flat Washer
- (1) 12mm Lock Nut



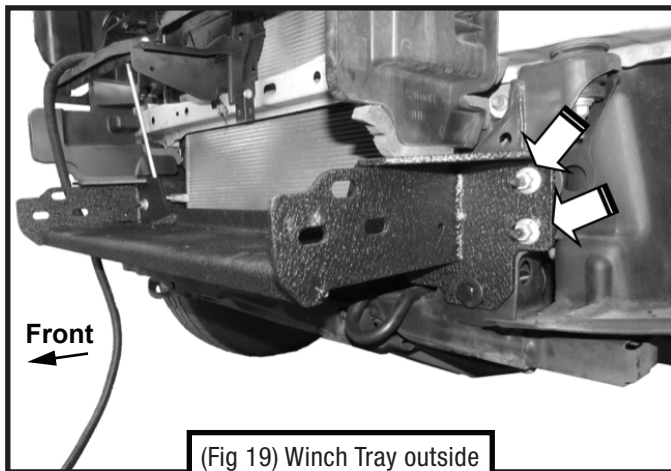
(Fig 17) Attach Winch Tray to additional mounting point

STEP 3 ATTACH WINCH TRAY

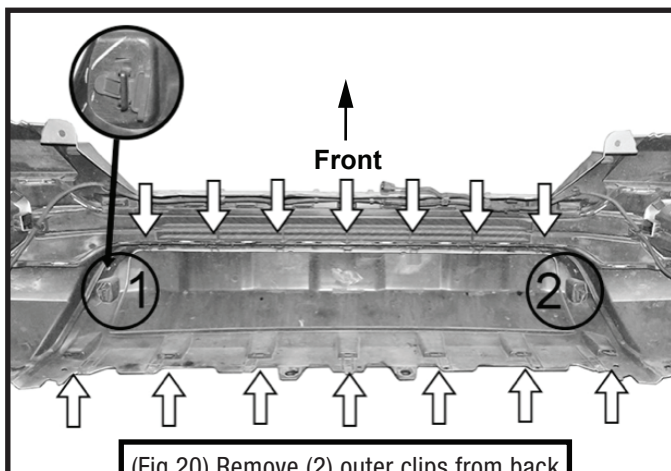
Follow (Fig 15 – 20) to attach Winch Tray to vehicle. Ensure hardware is hand tightened.



(Fig 18) Winch Tray inside mounting slots attached



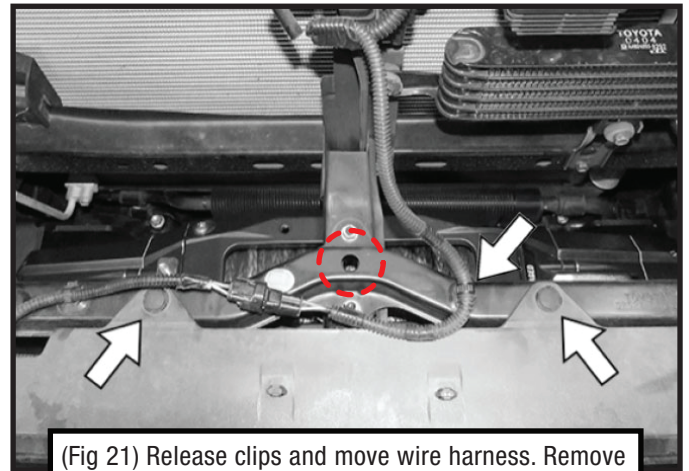
(Fig 19) Winch Tray outside mounting slots attached



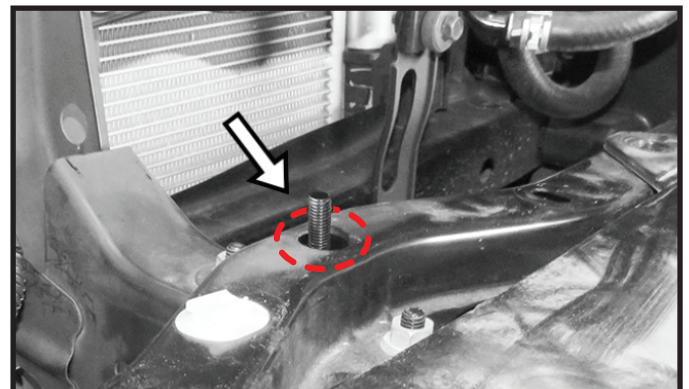
(Fig 20) Remove (2) outer clips from back of bumper cover, then release clips from top and bottom to remove center cover

STEP 4 ROUTE LIGHT BAR WIRE

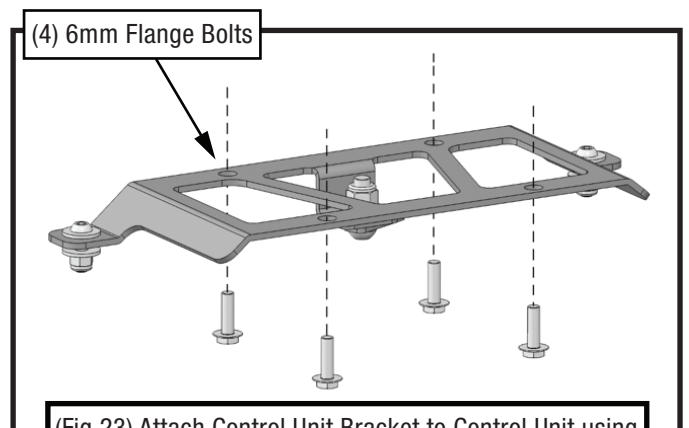
Follow (Fig 21 – 27) to attach Control Unit, cut to clear area for control unit and release lever, then reattach hardware and attach License Plate Bracket. Ensure hardware is hand tightened at this point.



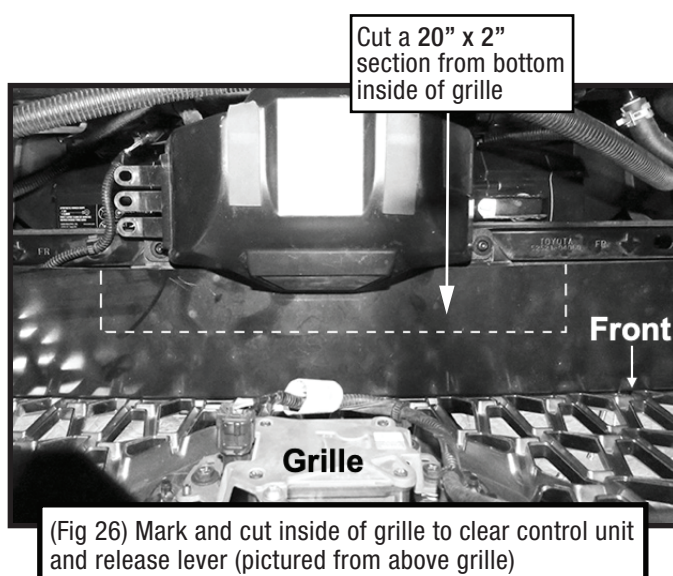
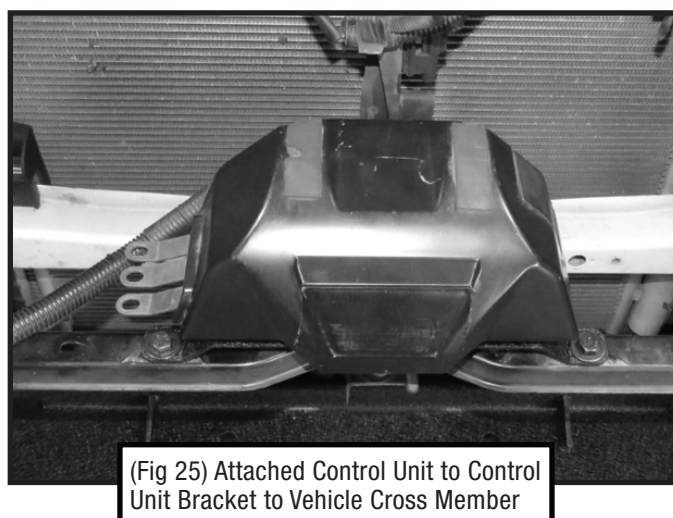
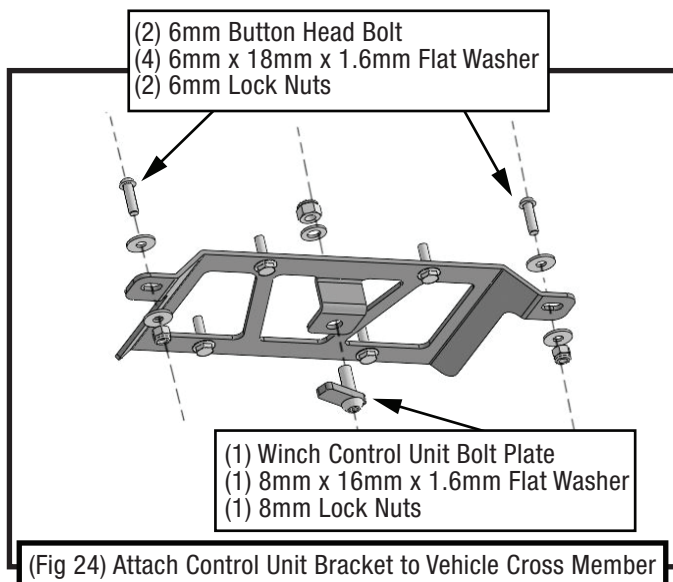
(Fig 21) Release clips and move wire harness. Remove (2) clips attaching top of bumper cover (arrows)



(Fig 22) Insert Bolt Plate into hole in top of crossmember (arrows)

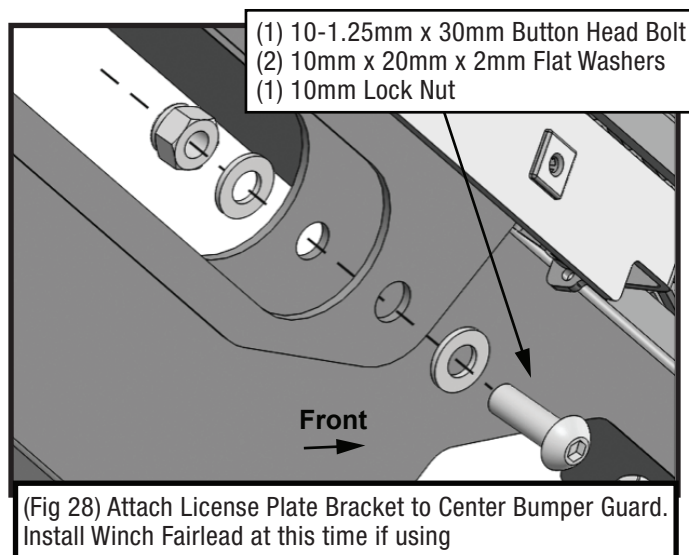


(Fig 23) Attach Control Unit Bracket to Control Unit using Flange Bolt. Follow your Control Unit's installation guide on how to secure the Unit



STEP 5 INSTALL CENTER BUMPER

Follow (Fig 28 – 32) to install Center Bumper to Winch Plate Assembly.

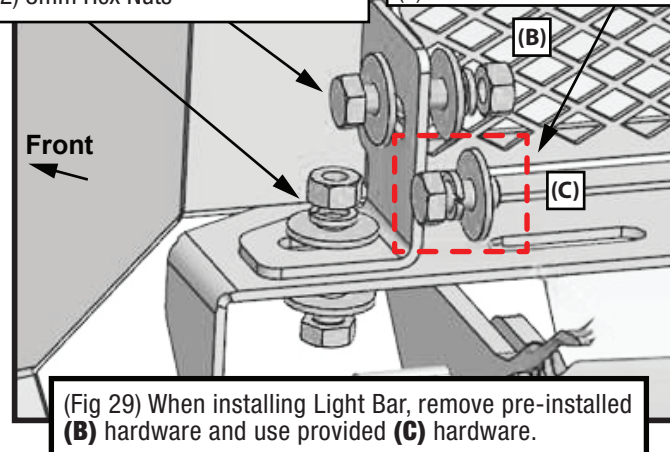


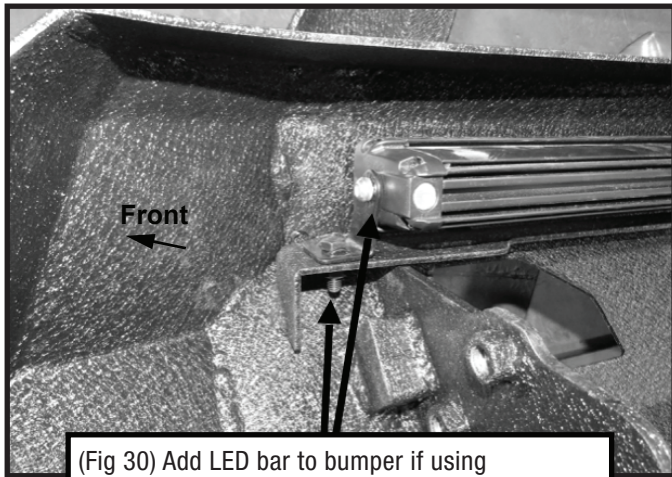
(B) Pre-Installed Hardware: Same for both sides

- (2) 8mm x 1.25mm x 25mm Hex Bolts
- (4) 8mm x 24mm Flat Washers
- (2) 8mm Lock Washers
- (2) 8mm Hex Nuts

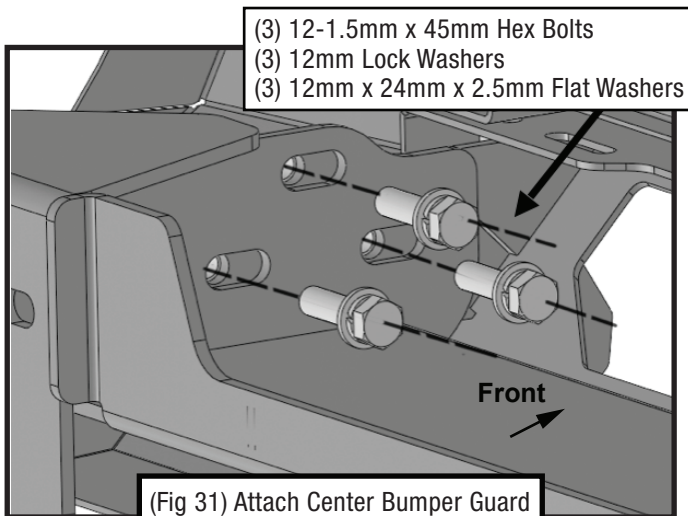
(C) Hardware Bag for LED Light Bar: Same for both sides

- (1) 8mm Lock Washer
- (1) 8mm x 1.25mm x 16mm Hex Bolts
- (1) 8mm x 24mm Flat Washer

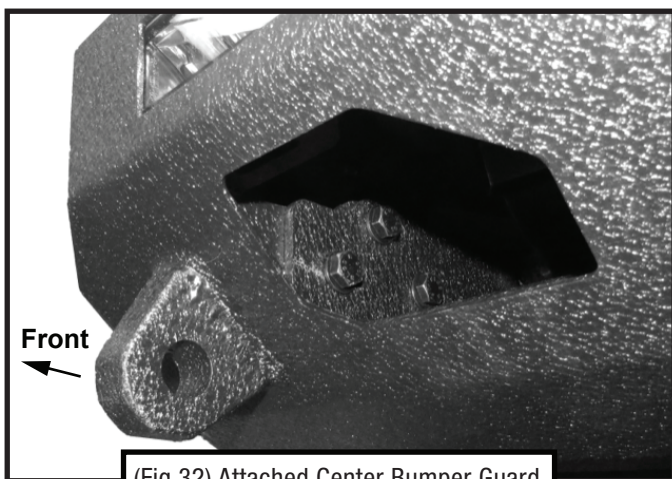




(Fig 30) Add LED bar to bumper if using
*NOTE - (Install LED bar with wiring on driver side)



(Fig 31) Attach Center Bumper Guard
to Winch Tray assembly



(Fig 32) Attached Center Bumper Guard



Completed Installation

STEP 6 COMPLETION

Ensure Center Bumper Guard is level, then tighten all fasteners. Installation is complete. Do periodic inspections to the installation to make sure that all hardware is secure and tight.