



TYGER®

FENDER FLARE

TG-FF6C4368

READ INSTRUCTIONS CAREFULLY BEFORE STARTING INSTALLATION. ONLY FOLLOW THE APPROVED INSTALLATION ACCORDING TO THESE WRITTEN INSTRUCTIONS. FAILURE TO DO SO MAY CAUSE DAMAGE TO YOUR VEHICLE AND INVALIDATE THE WARRANTY.

PRIOR TO INSTALLATION:

- Remove contents from box. Verify all parts are present and free from any defects or damage.
- Make sure installation is done on a non-abrasive surface to avoid scratching the flare surface.
- Verify the fit of each flare to the vehicle body to ensure you have the correct flares for your vehicle.
- Remove existing decals and mud flaps on the vehicle that may interfere with flare installation.
- Do not use any harsh abrasive detergent to clean the flare.

PAINTING

Painted flares cannot be returned. Test fit before painting. We are not responsible for any costs that may incur if flares were painted without test fitting.

- Clean surface to be painted with a good grade degreaser. Do not use lacquer thinner or any solvent based product.
- Wipe flare surface completely dry with a tack rag prior to paint.
- Application of plastic adhesion promoter for PP plastic as per your paint system manufacturer's recommendations is required.
- Use a high quality enamel or polyurethane automotive paint to paint the flares.
- Not recommend to paint the edge trim, but if desired use a flex additive.

WARNING

Dirt or debris may become lodged between flares and vehicle's fenders causing scratching and paint wear from vehicle vibration. TYGER is not responsible for any damage, and installation is done with buyer's understanding that this damage may potentially occur.

SAFETY INFORMATION

- Before driving, ensure that flare is properly secured to vehicle.
- Do not use automatic "brush-style" car wash.
- Periodically check all components for tightness.

Tools Required



Electric Drill



1/4" Drill



3/32" Drill



#2 Phillips Bit



Socket Wrench



7mm Socket



3/8" Wrench



7/16" Wrench



Grease Pencil



Pry Tool



Ruler

Hardware Included



[A]



[B]



[C]



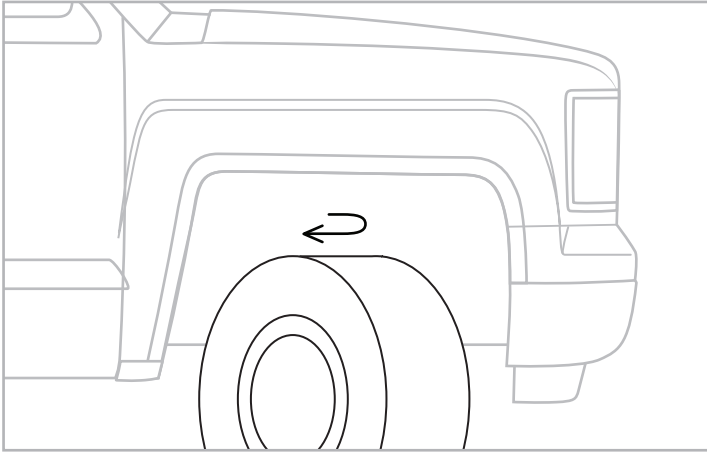
[D]

DAMAGED or MISSING PARTS?

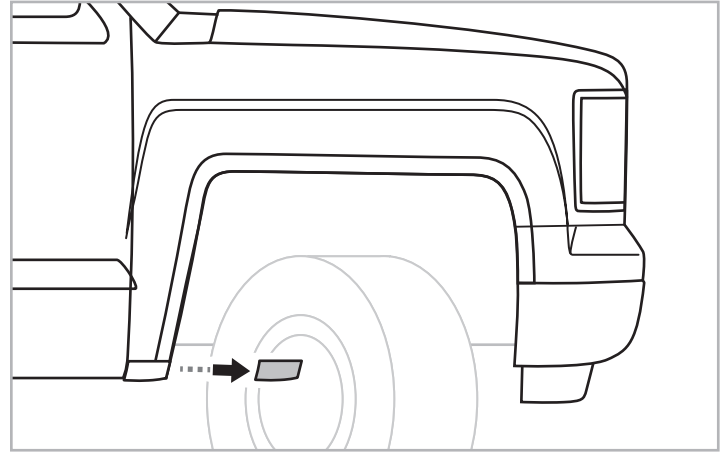
www.TygerAuto.com/Contact



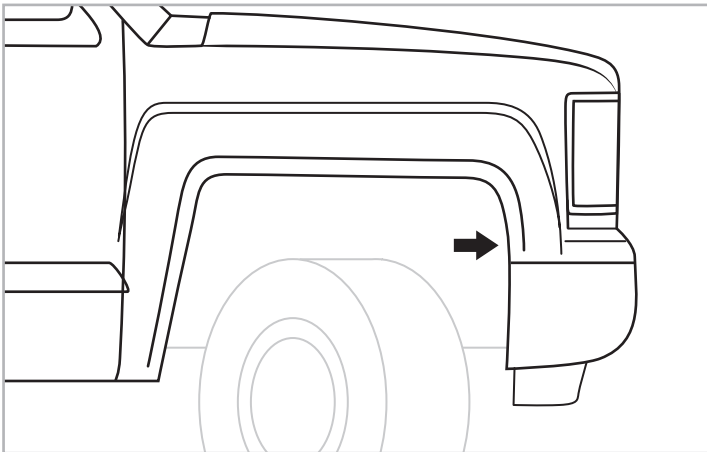
Front Flare Installation



STEP 1: For easier installation, turn wheel outward.

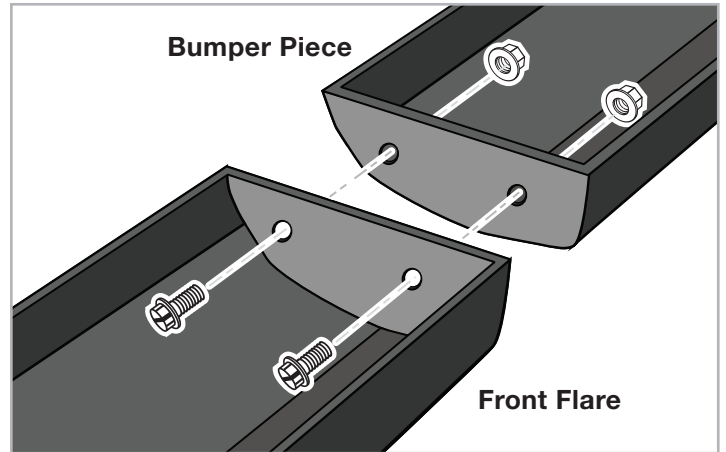


STEP 2: With a T-15 Torx bit, remove 2 factory screws to remove the mudguard.



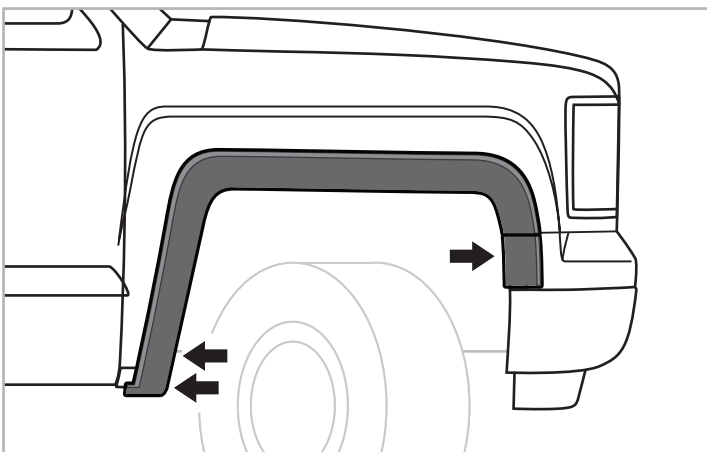
STEP 3: For 2014-2015 Silverado 1500 models ONLY:

With a 7 mm socket, remove the factory screw at the bottom front of the wheel well.

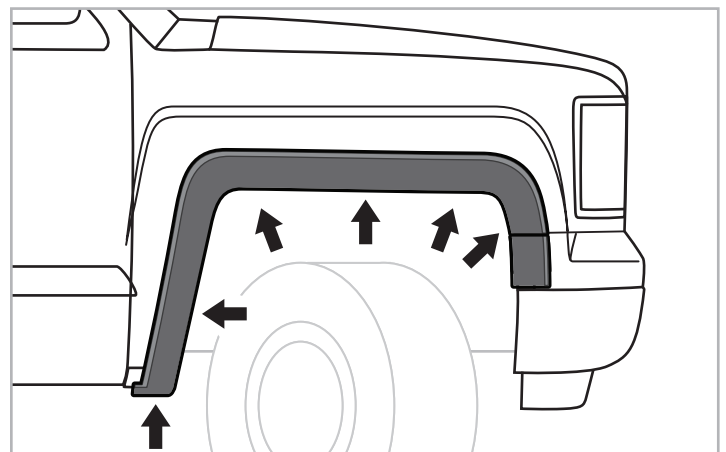


STEP 4: For 2014-2015 Silverado 1500 models ONLY:

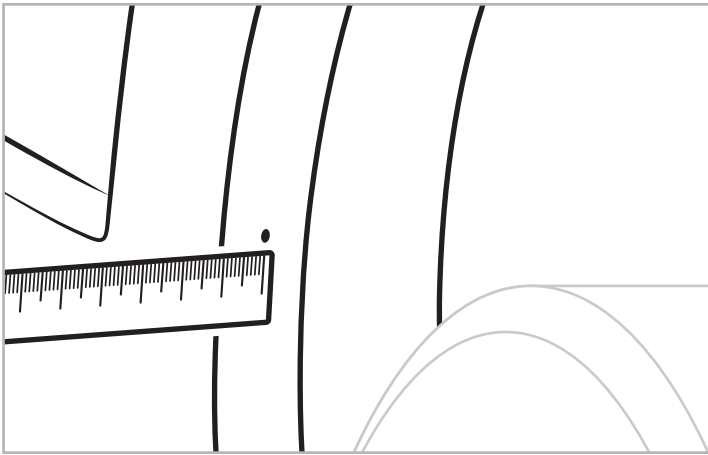
Assemble front flare and front bumper piece with supplied Slot Screw [A] and supplied Slot Nut [B].



STEP 5: Hold flare in place, install 3 supplied PH Screws [C] through holes in flare and into vehicle's factory holes. Do not tighten.

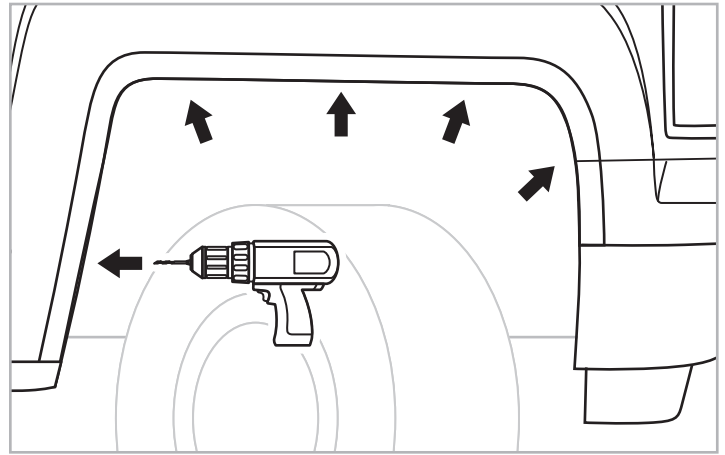


STEP 6: Press firmly on flare and ensure proper flare fitment. With a grease pencil, mark 6 locations using holes in flare as guide. Then, uninstall the 3 screws from Step 5 and remove flare.

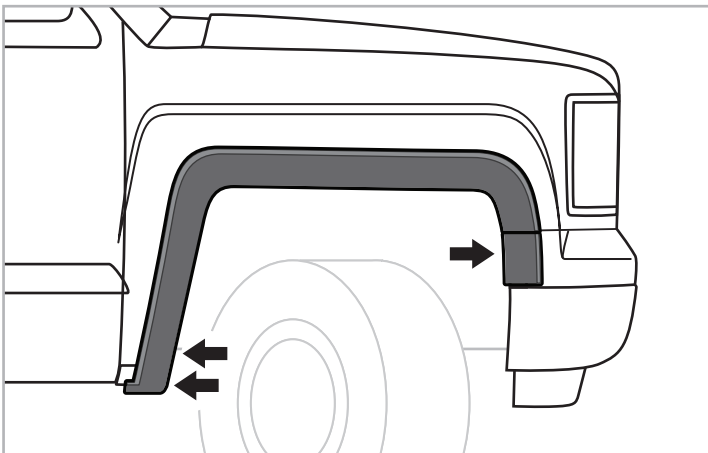


STEP 7: With a grease pencil, make a new mark that is 10mm inward from the edge of the fender and horizontal to the mark from Step 6. Do not mark the bottommost location.

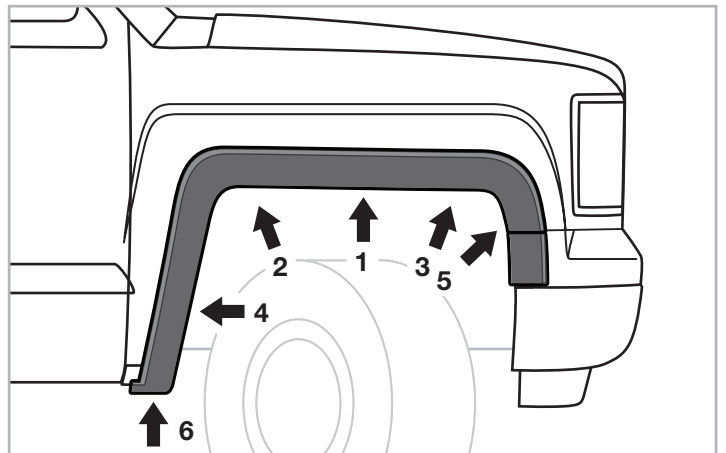
NOTE: New mark may be on either side of the first mark.



STEP 8: With a 3/32" drill bit, drill 5 holes at new marks made in Step 7 and drill another hole for the bottommost location marked in Step 6.

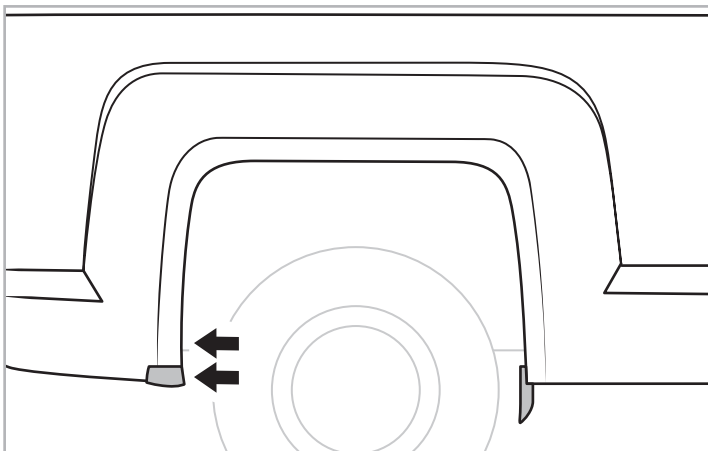


STEP 9: Reposition flare, reinstall 3 supplied PH Screws [C].

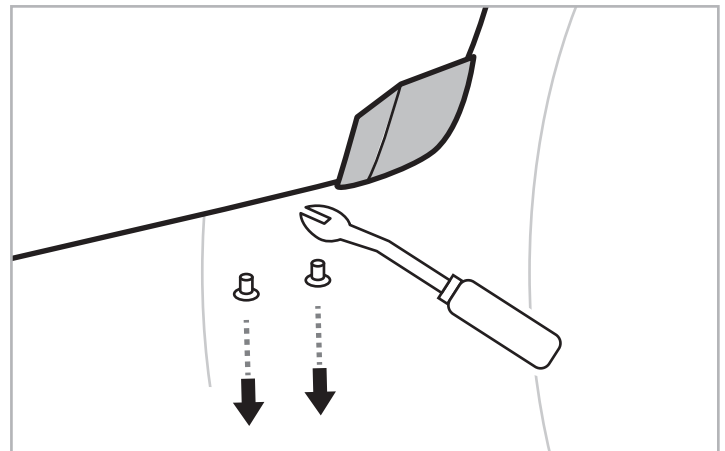


STEP 10: Install 6 supplied Self-Tapping Screws [D] through holes in flare and into the drilled holes in the indicated order. Then, tighten all screws.

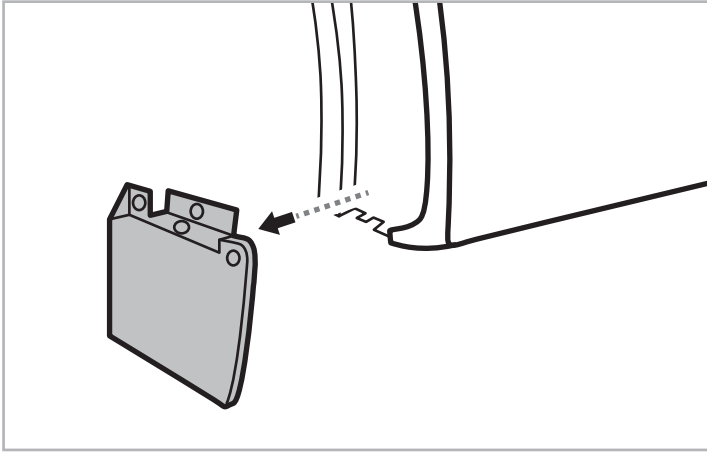
Passanger Side Rear Flare Installation



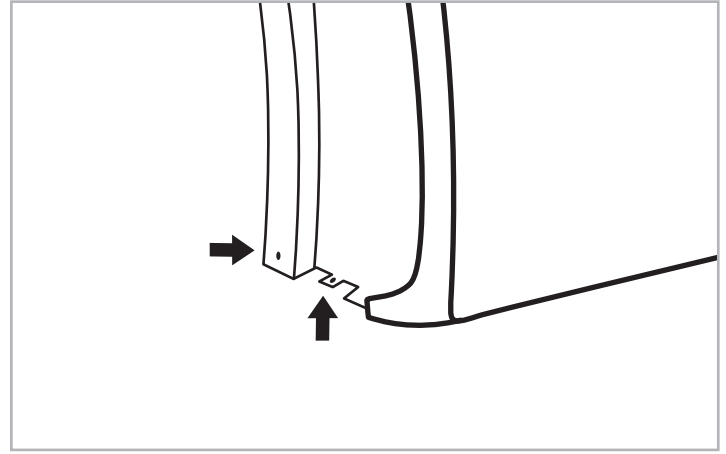
STEP 11: With a T-15 Torx bit socket wrench, remove 2 factory screws from the rear mudguard.



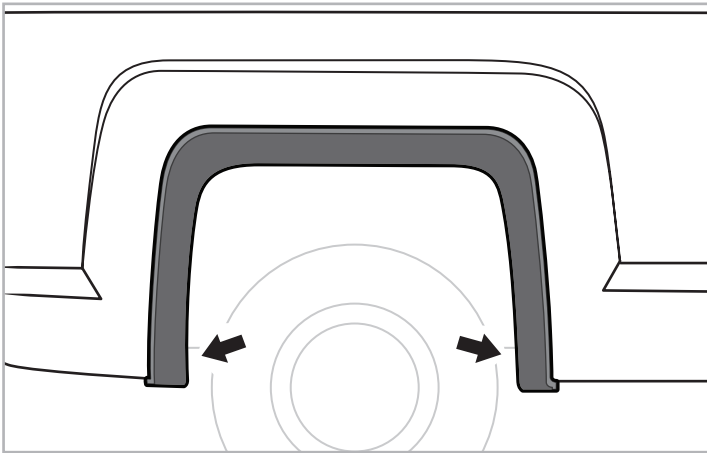
STEP 12: With a pry tool, remove 2 factory retainers on the bottom to remove the rear mudguard.



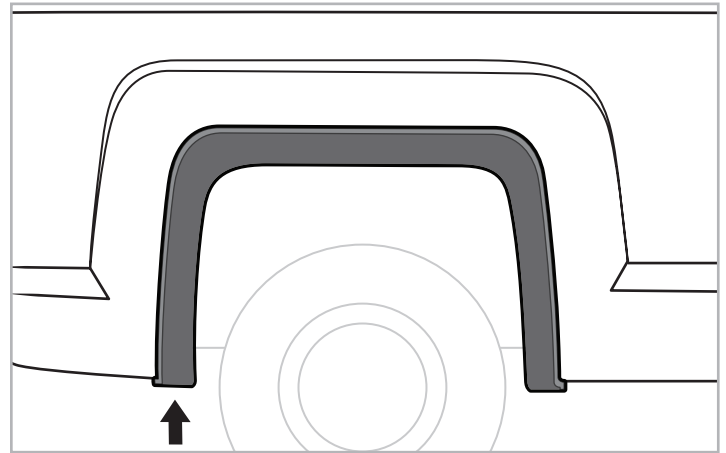
STEP 13: With a T-15 Torx bit socket wrench, remove 4 factory screws to remove the front mudguard.



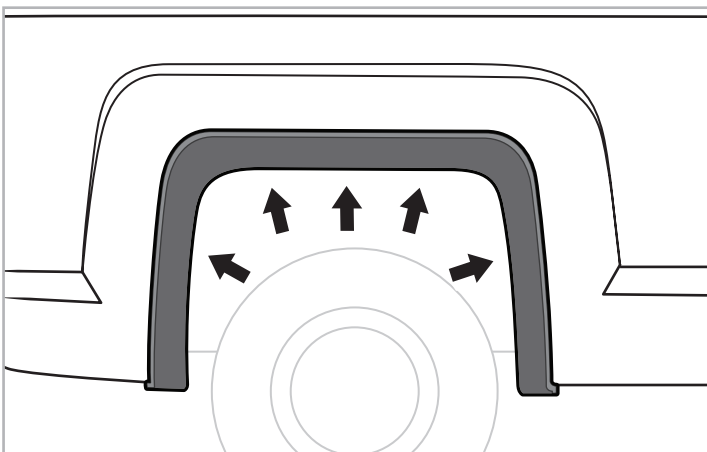
STEP 14: Reinstall 2 factory screws into fender well liner.



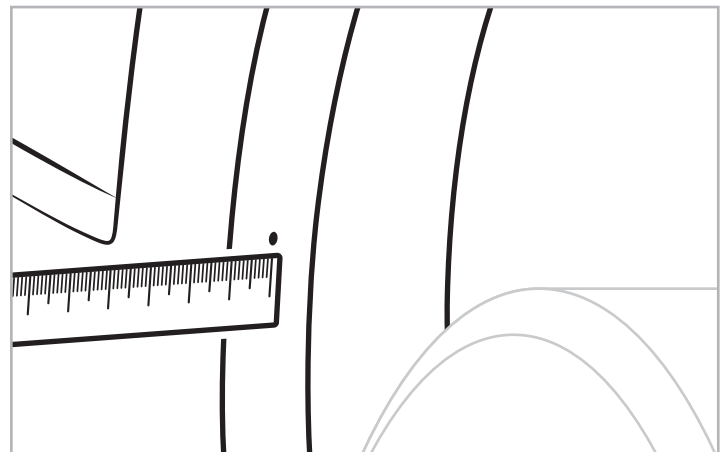
STEP 15: Hold flare and press firmly in position, then install 2 PH Screws [C]. Do not tighten.



STEP 16: With a grease pencil, make a mark at the rear bottommost location using hole in flare as guide.

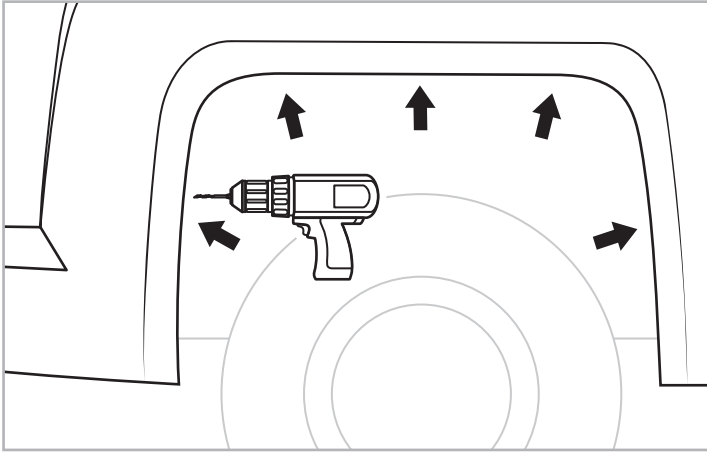


STEP 17: Then, make 5 additional marks using the holes in flare as guide. Then, uninstall the 2 screws from Step 15 and remove flare.

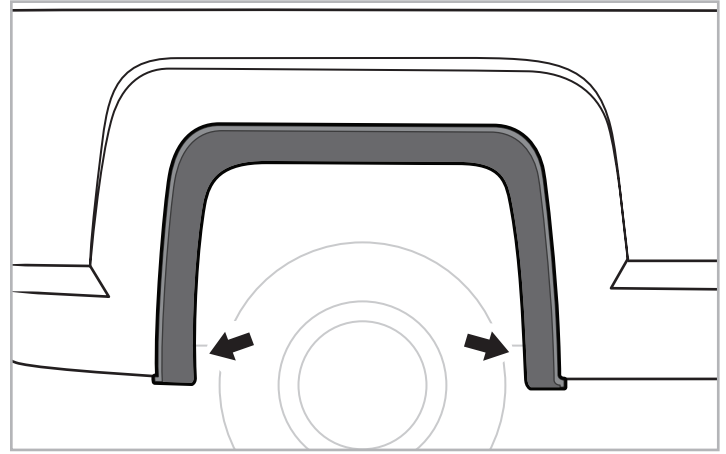


STEP 18: With a grease pencil, make a new mark that is 10mm inward from the edge of the fender and horizontal to the mark from Step 17.

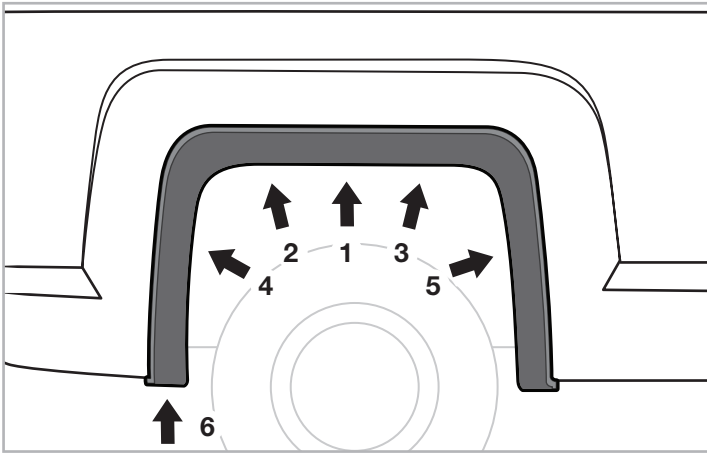
NOTE: New mark may be on either side of the first mark.



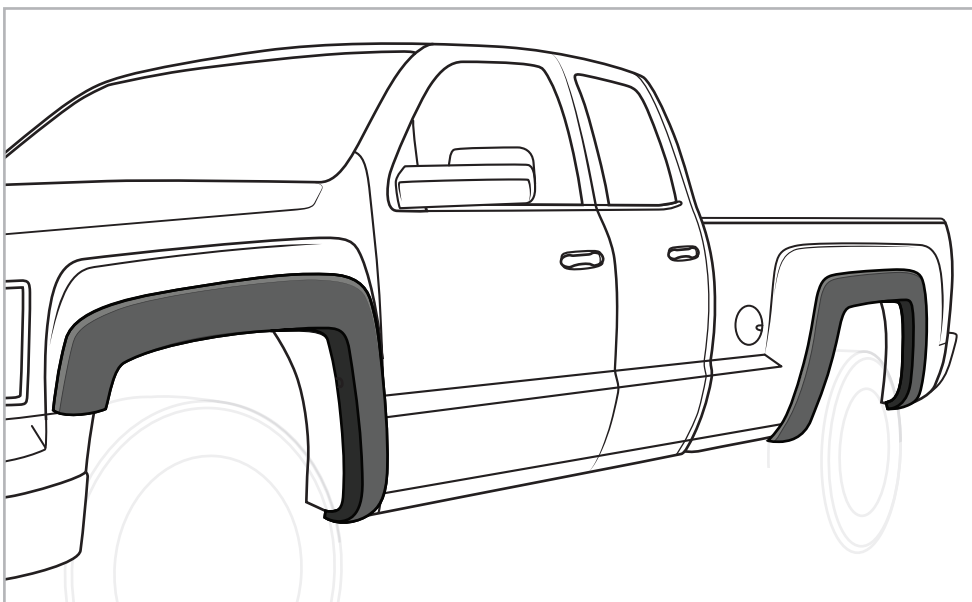
STEP 19: With a 3/32" drill bit, drill 5 holes at new marks made in Step 18 and drill another hole for the bottommost location marked in Step 16.



STEP 20: Reposition flare, reinstall 2 supplied PH Screws [C].

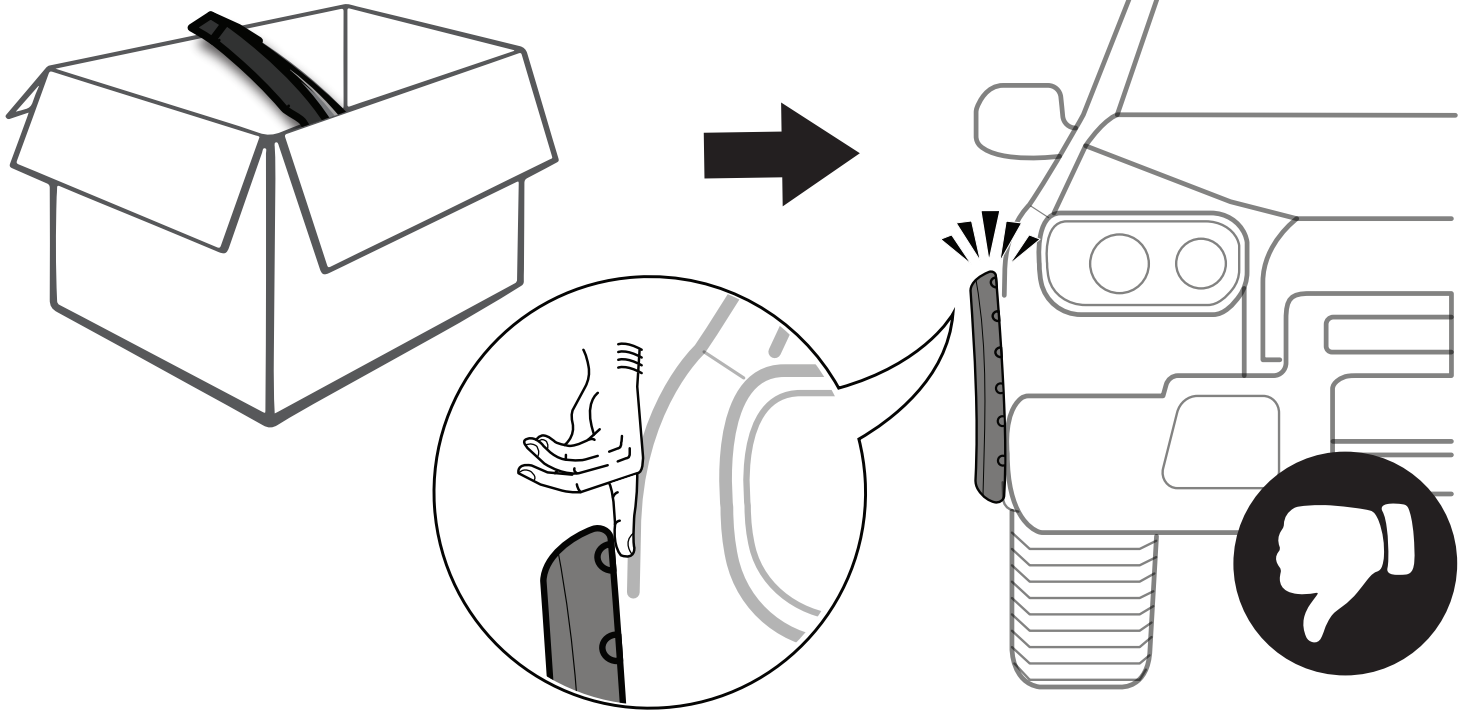


STEP 21: Install 6 supplied Self-Tapping Screws [D] through holes in flare and into the drilled holes in the indicated order. Then, tighten all screws.

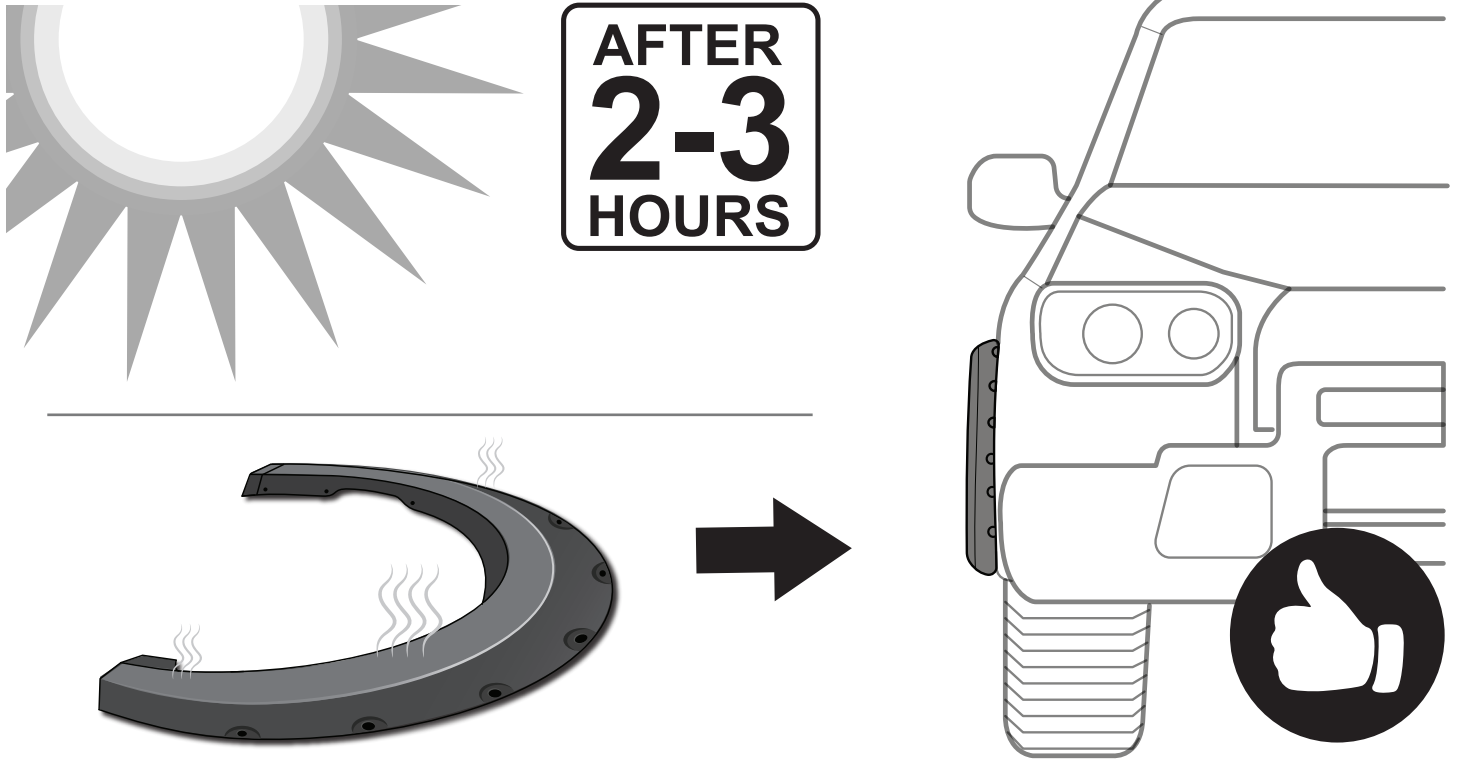


Driver side installation is completed. (Repeat the same steps on passenger side installation.)

FITMENT OR GAP ISSUE?



SOLUTION!



*In winter, heat gun or hair dryer may be used instead.