



TYGER®

FENDER FLARE

TG-FF8C4588



ATTENTION!

PLEASE READ THE INSTRUCTIONS CAREFULLY BEFORE STARTING INSTALLATION. PLEASE FOLLOW THE APPROVED INSTALLATION ACCORDING TO THE WRITTEN INSTRUCTIONS. FAILURE TO DO SO MAY CAUSE DAMAGE TO YOUR VEHICLE AND INVALIDATE THE WARRANTY.



WARNING!

PARTICLES & DIRT STUCK BETWEEN INSTALLED FLARES AND VEHICLE'S FENDERS MAY CAUSE SCRATCHING AND PAINT WEAR FROM VEHICLE VIBRATION. INSTALLATION IS DONE WITH BUYER'S AND/OR USER'S UNDERSTANDING THAT THIS DAMAGE MAY POTENTIALLY OCCUR. TYGER™ IS NOT RESPONSIBLE FOR ANY DAMAGE FROM THIS CAUSE.

PRIOR TO INSTALLATION:



CHECK EVERYTHING BEFORE INSTALLATION



USE NON-ABRASIVE SURFACE TO INSTALL



VERIFY FITMENT OF FLARES TO VEHICLE



REMOVE DECALS & MUD FLAPS FIRST



ABRASIVE DETERGENT IS PROHIBITED

SAFETY INFORMATION:



NO AUTOMATIC BRUSH-STYLE WASH



CHECK TIGHTNESS

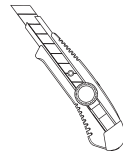


CHECK CAREFULLY BEFORE DRIVE

ABOUT PAINTING: Painted flares cannot be returned. Test fit before painting. We are not responsible for any costs that may incur if flares were painted without test fitting.

- Clean surface to be painted with a good grade degreaser. Do not use lacquer thinner or any solvent based product.
- Wipe flare surface completely dry with a tack rag prior to paint.
- Application of plastic adhesion promoter for PP plastic as per your paint system manufacturer's recommendations is required.
- Use a high quality enamel or polyurethane automotive paint to paint the flares.
- Not recommend to paint the edge trim, but if desired use a flex additive.

TOOLS FOR EASIER INSTALLATION



Utility Knife



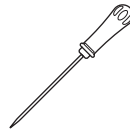
#2 Phillips Driver



Socket Wrench



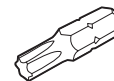
10mm Socket



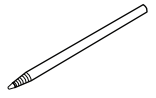
Awl



Pliers



T15 Torx Bit



Grease Pencil

HARDWARE KIT INCLUDED



[A] Edge Trim

x36



[B] Torx Bolt

x36



[C] SS Washer

x36



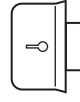
[D] Nylock Nut

x1



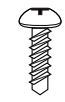
[E] T45 Torx Bit

x2



[F] U-Clip

x2



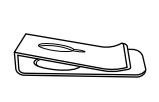
[G] 3/4" PH Truss Screw

x12



[H] Mylar Tab

x12



[I] Long U-Clip

x2



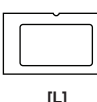
[J] Dacromet Outer Clip

x12



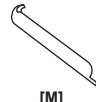
[K] 5/8" PH Truss Screw

x2

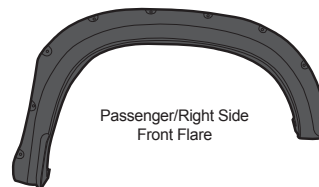


[L] Clear Tab

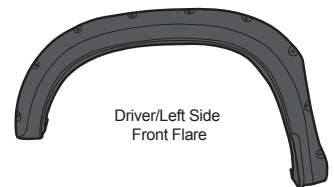
x1



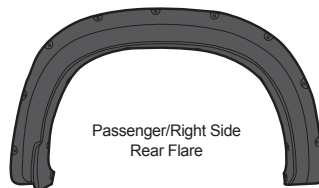
[M] Edge Trim Tool



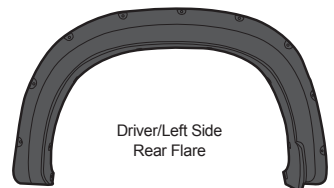
Passenger/Right Side Front Flare



Driver/Left Side Front Flare



Passenger/Right Side Rear Flare



Driver/Left Side Rear Flare

DAMAGED or MISSING parts?

www.TygerAuto.com/Contact





TYGER®

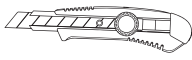
EDGE TRIM INSTALLATION

- Peel 2 to 3" of red vinyl backing away from one end of the **Edge Trim [A]**.
- Apply **Edge Trim [A]** over top edge of flare with adhesive side contacting inside edge of flare.
- Press **Edge Trim [A]** into place and apply thumb pressure to ensure good adhesion, pull away red backing as you work your way around flare edge in one-foot increments.

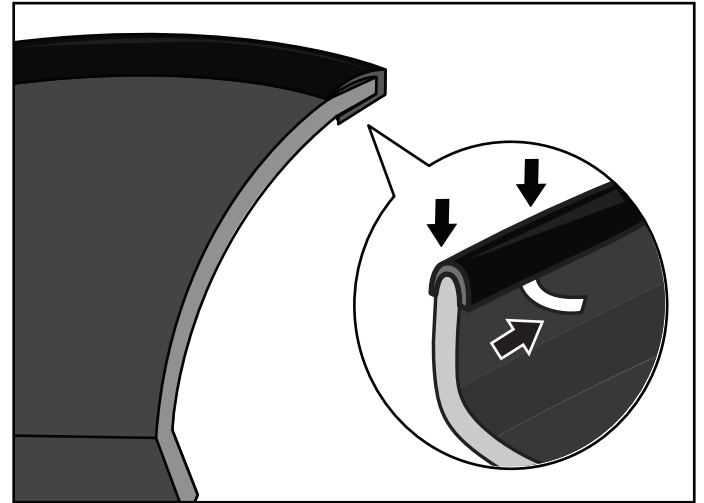
You will need:



Edge Trim [A]



Utility Knife



NOTE!

DO NOT stretch Edge Trim during application.

DECORATIVE RIVET INSTALLATION

- Put a **Torx Bolt [B]** with a **Washer [C]** through each of the top holes around the flare and using a **Nylock Nut [D]** to secure on the other side. Using a socket wrench and the supplied **Torx Bit [E]** on an electric drill to tighten bolts. **DO NOT** over-tighten as this may damage the flare.

You will need:



[B]
Torx Bolt



[C]
SS Washer



[D]
Nylock Nut



[E]
T45 Torx Bit



1/2"
Wrench



Electric Drill

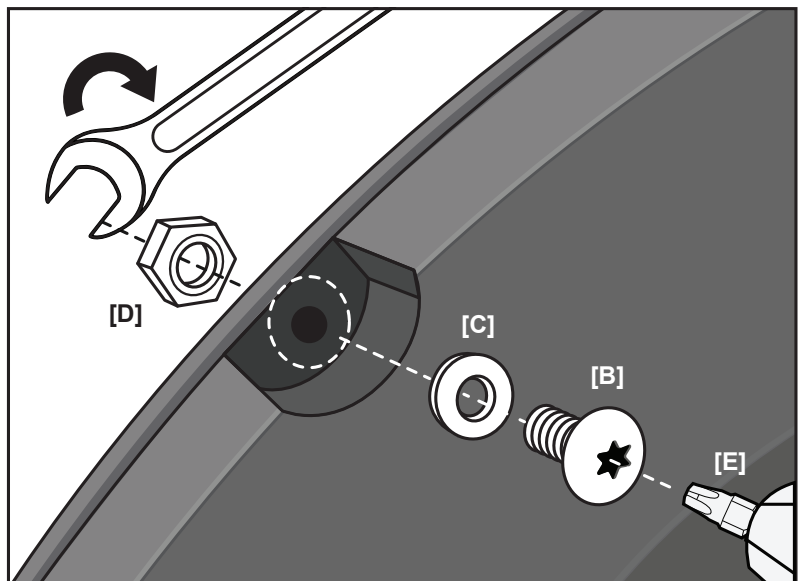
NOTE!

- **DO NOT** drill holes on the vehicle body as rivets are decorative and fasten only to the flare. Do not attempt to use the bolts to fasten flare to vehicle body.

- All exposed fasteners and bare metal should be treated with rust resistant paint before installing flares. Spray inner fender wells with undercoating after flare installation.

- For vehicle with large tires may require lowering bump stops and/or installing steering stops to prevent tire from contacting flares.

- Modification may be necessary to maintain a minimum 4" clearance between flares and exhaust pipes. (Exhaust gases should not vent directly onto flares)





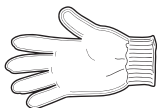
TYGER®

FRONT FLARES INSTALLATION



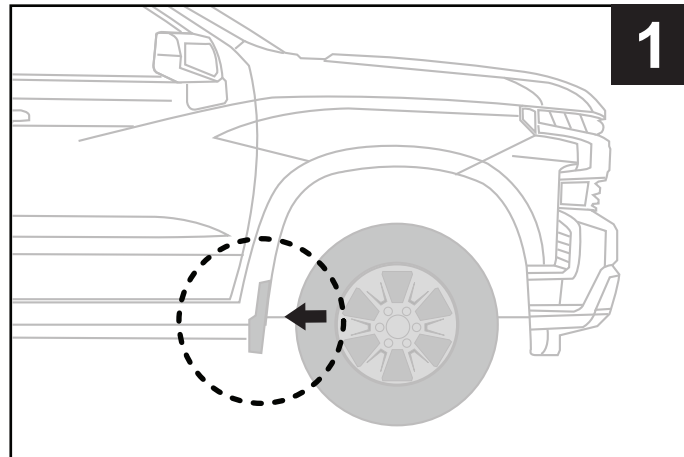
ATTENTION!

SOME COMPONENTS MIGHT BE SHARP, FOR SAFETY CONCERNS, PLEASE WEAR GLOVES DURING THE INSTALLATION FOR PROTECTION IF IT IS NEEDED.

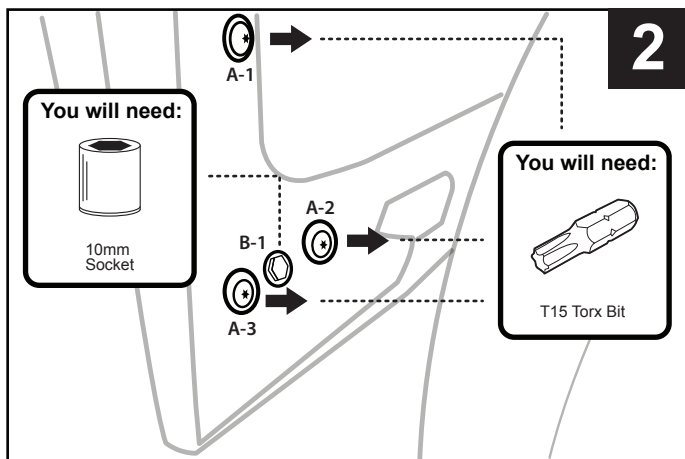


NOTE!

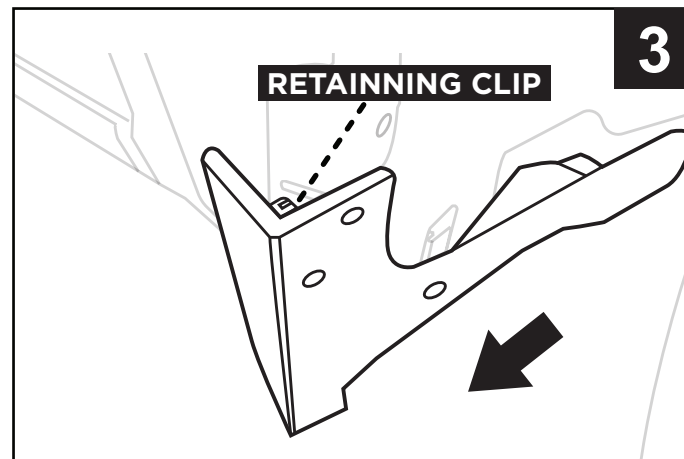
PLEASE USE APPROPRIATE TOOLS TO CLEAN THE VEHICLE IF IT IS NECESSARY, DRY IT OUT BEFORE YOU START THE INSTALLATION.



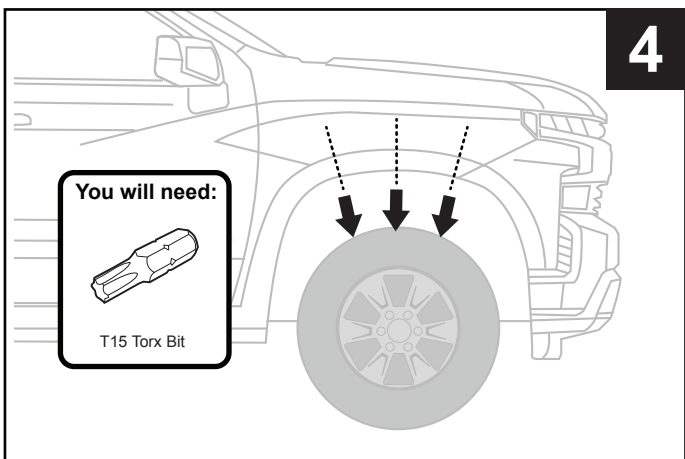
1. Locate the factory mud flap on the passenger side front wheel well.



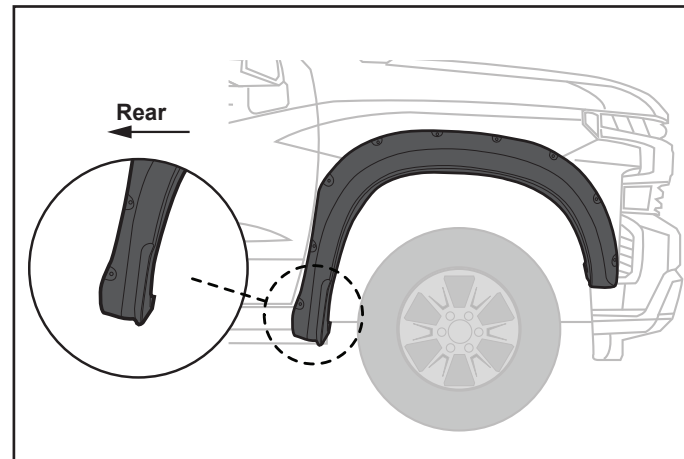
2. Remove 3 factory installed T15 screws, and 1 factory installed 10mm bolt. NOTE: A-1 & A-2 will be reused to install the flare.



3. Pull the mud flap away from vehicle in order to disengage the factory retaining clip, and remove mudflap from vehicle. Use pliers if it is necessary to squeeze clip

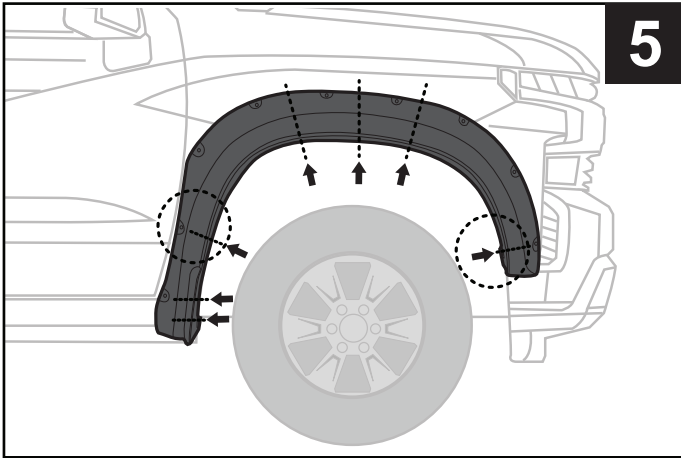


4. Remove 3 factory installed T15 screws from wheel well as shown above. These 3 factory T15 screws will be reused to install the front flare.

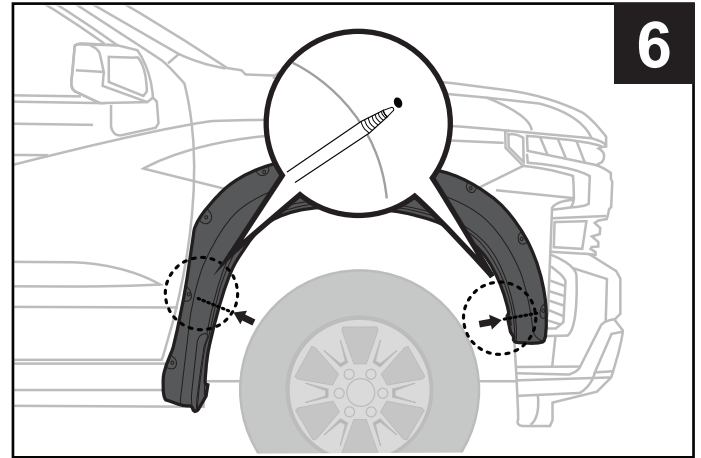




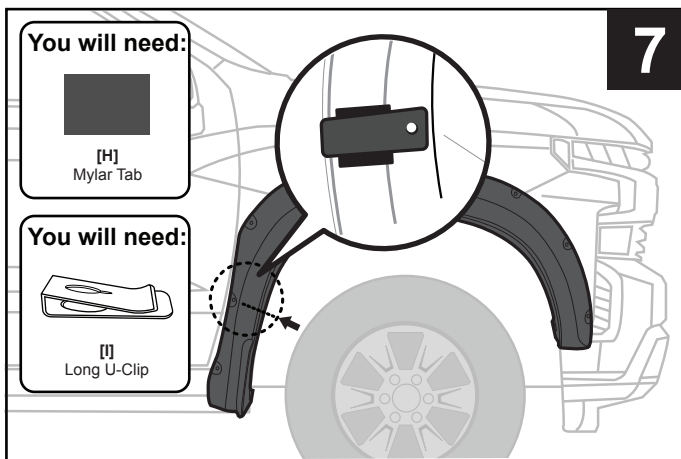
TYGER®



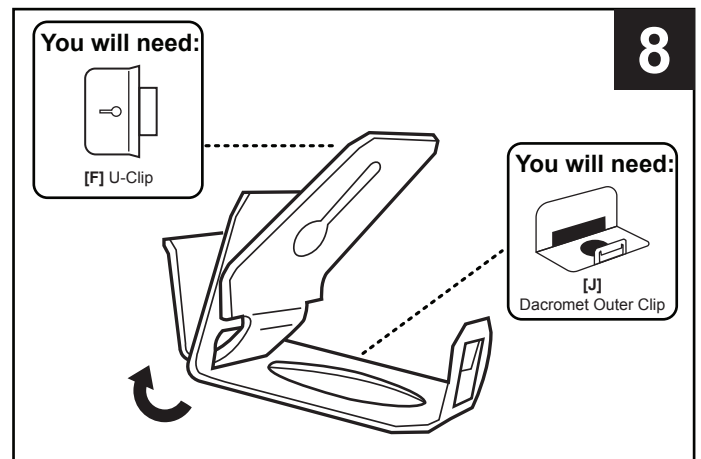
5. Hold flare to vehicle and note the approximate hole locations in the flare.



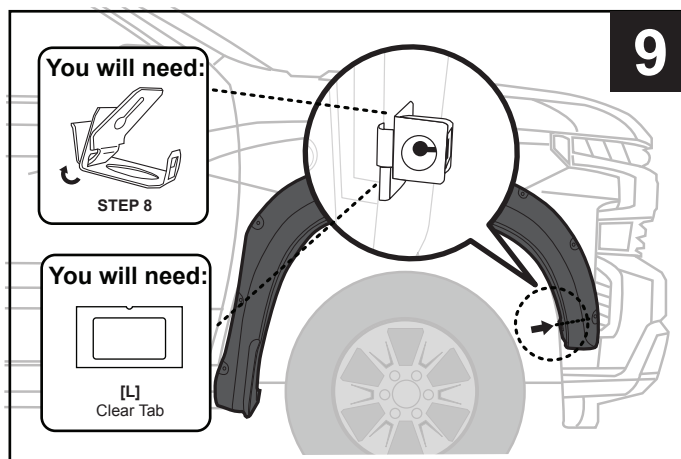
6. Use a grease pencil to mark the two locations of the holes indicated with circles in STEP 5. Remove flare from vehicle.



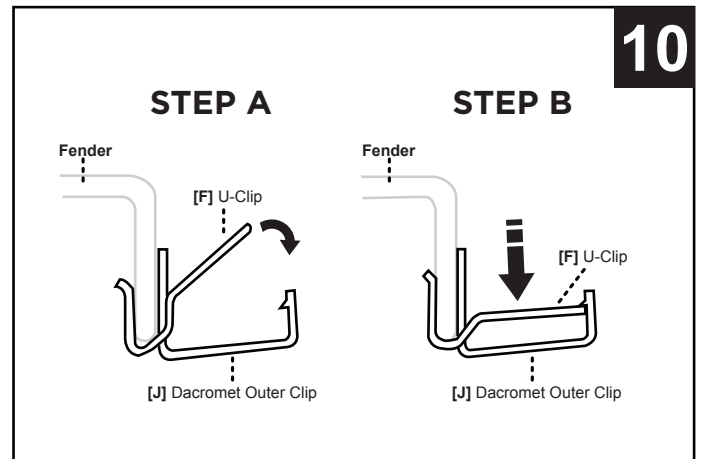
7. Install supplied Mylar Tab [H] over the rear location marked in STEP 6. Install a Long U-Clip [I] as indicated on top of the protective film.



8. Assemble U-Clip [F] with Dacromet Outer Clip [J] as indicated in the above diagram. Insert tab of U-Clip [F] through slot in Dacromet Outer Clip [J].



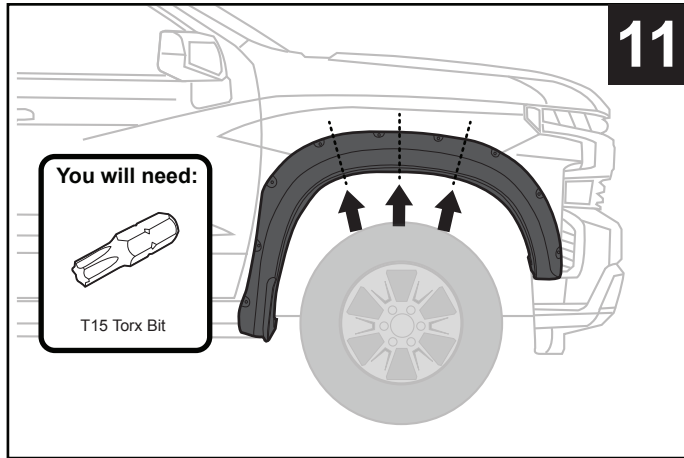
9. Install supplied Clear Tab [L] over the front location marked in STEP 6. Install a clip assembly on STEP 8 as indicated, on top of the Clear Tab [L]. NOTE: See STEP 10 for detail of clip attachment.



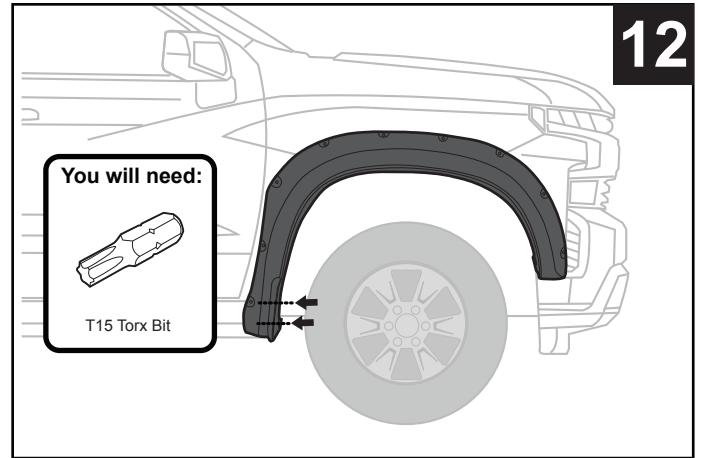
10. Press down on U-Clip [F] as indicated until an audible "Snap" is heard. NOTE: This may require pliers.



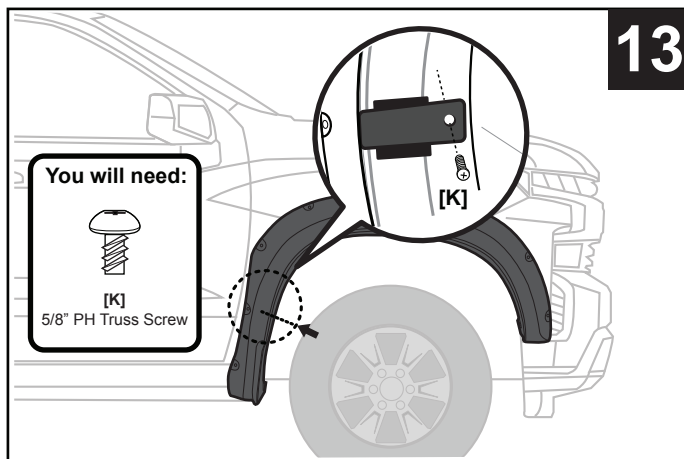
TYGER®



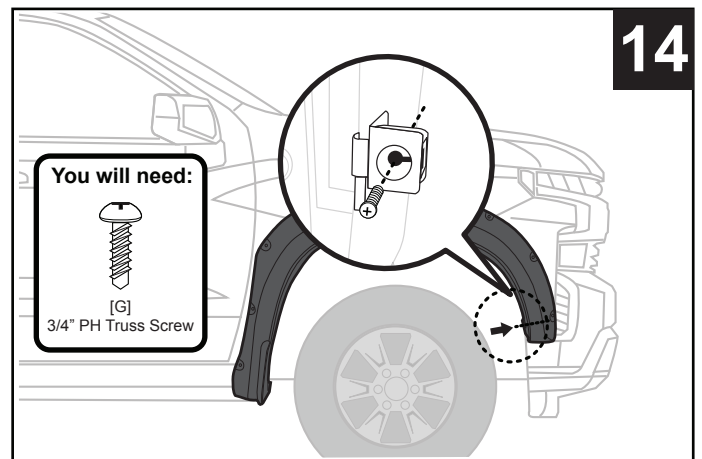
11. Hold flare bto vehicle and reinstall 3 removed factory screws with a T15 bit. NOTE: DO NOT tighten.



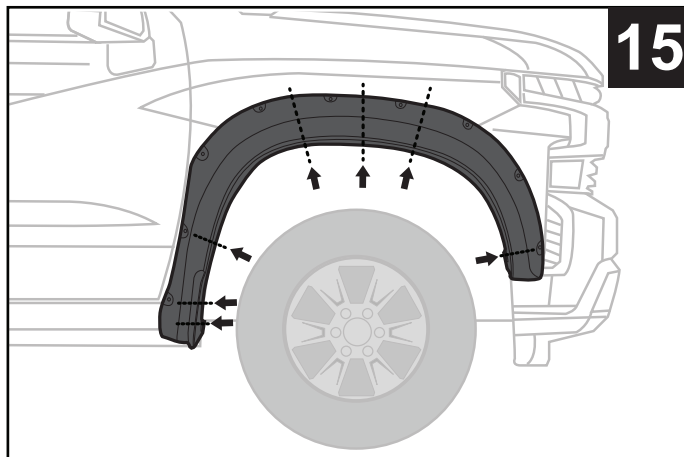
12. Reinstall 2 removed factory screws with T15 bit. NOTE: DO NOT TIGHTEN



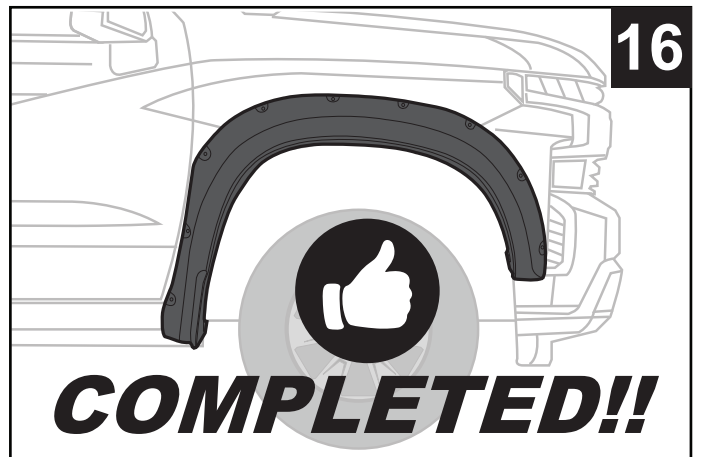
13. Install 1 supplied 5/8" PH Truss Screw [K] at rear Clip Location. NOTE: DO NOT TIGHTEN, use awl to align flare mouting holes if needed.



14. Install 1 supplied 3/4" PH Truss Screw [G] at front Clip Location. NOTE: DO NOT TIGHTEN, use awl to align flare mouting holes if needed.



15. Press flare firmly against body and tighten all screws.

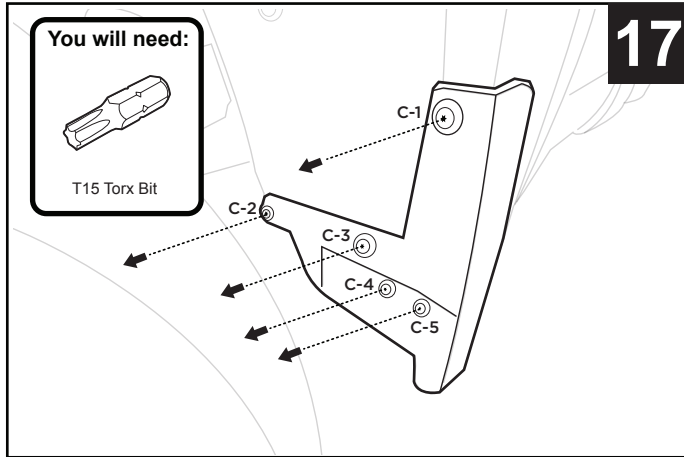


16. Completed the front flare installation.

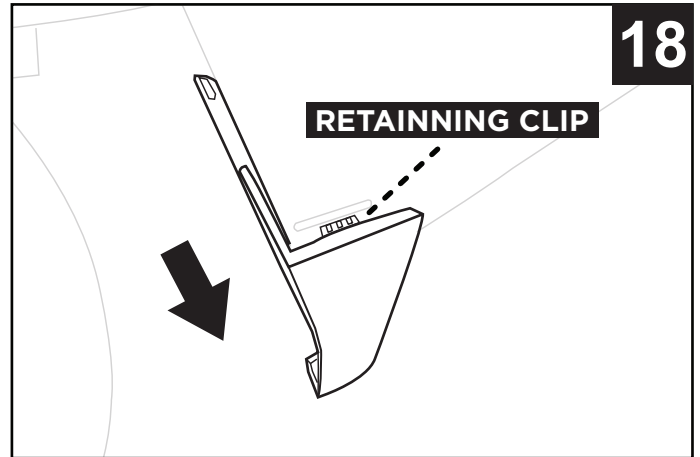


TYGER®

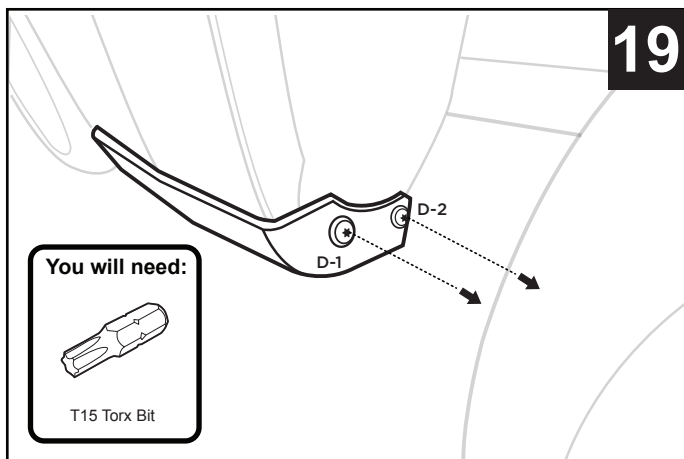
REAR FLARES INSTALLATION



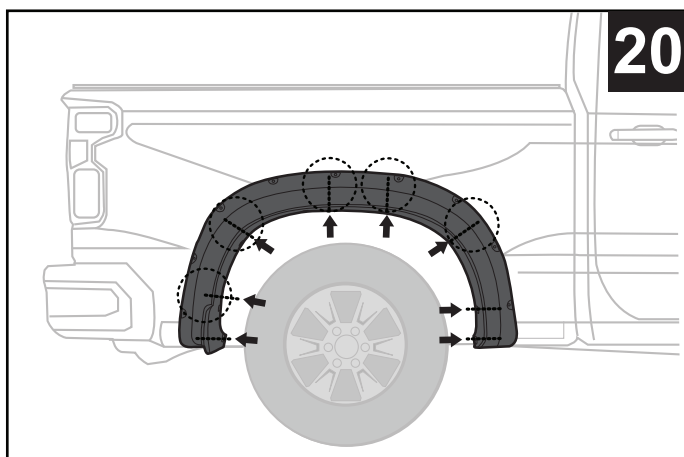
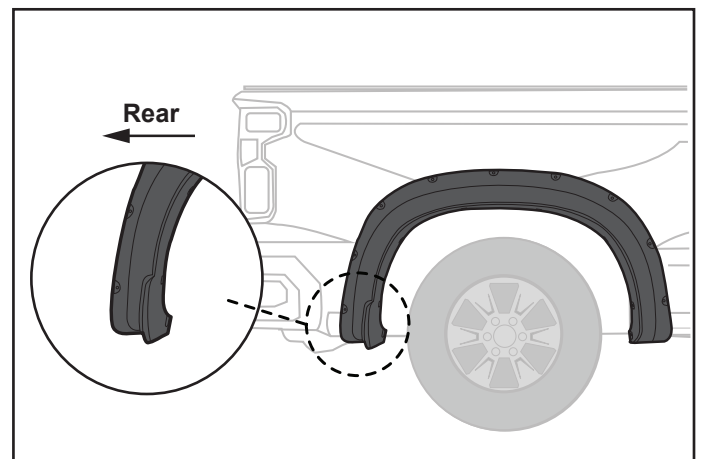
17. Locate the mud flap in front of the rear wheel. Remove 5 factory installed T15 screws. NOTE: T15 screws C-1 & C-3 will be reused to install the flare.



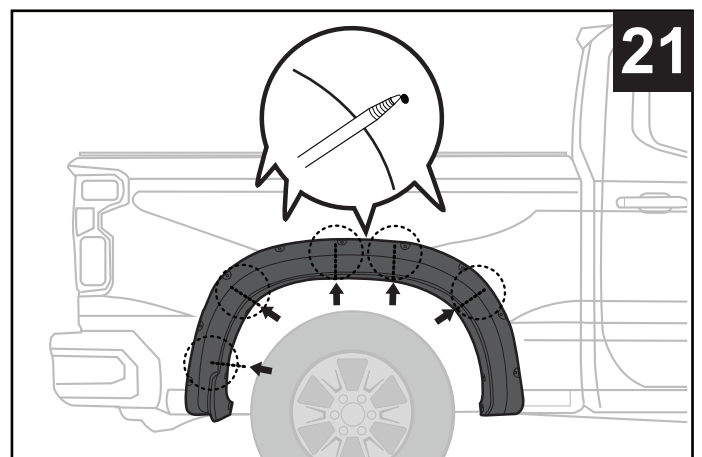
18. Pull the mud flap away from vehicle in order to disengage the factory retaining clip, and remove mud flap from vehicle. If necessary, pliers may be needed to squeeze clip from behind.



19. Locate the mud flap behind the rear wheel. Remove 2 factory installed T15 screws. NOTE: T15 screw D-2 will be reused.



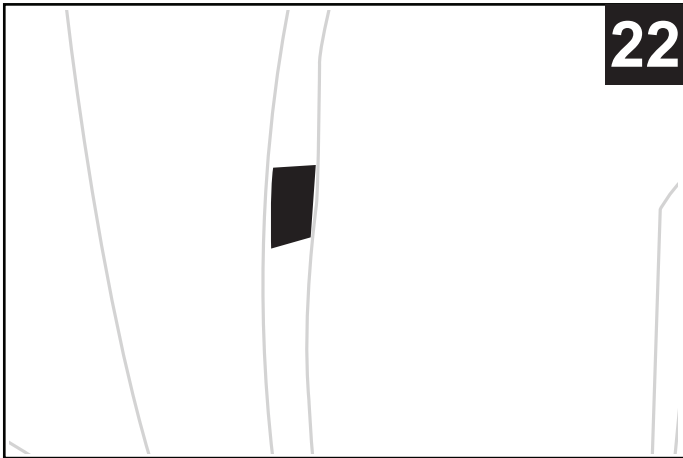
20. Hold flare to vehicle and note the approximate hole locations in the flare.



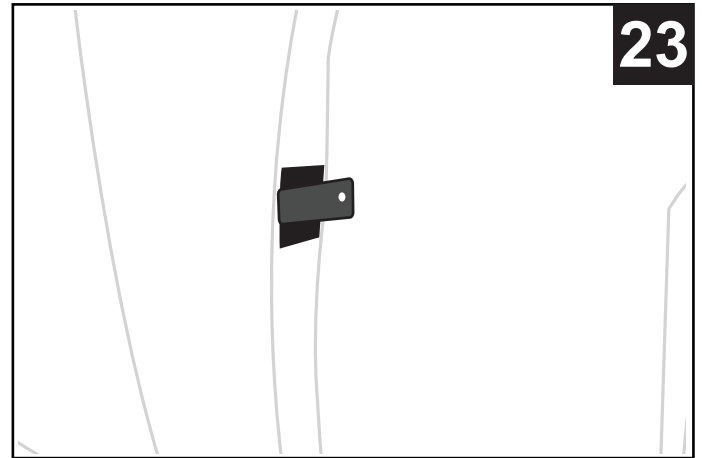
21. Use a grease pencil to mark the five location of the holes indicated by the circles in STEP 20. Remove flare from vehicle.



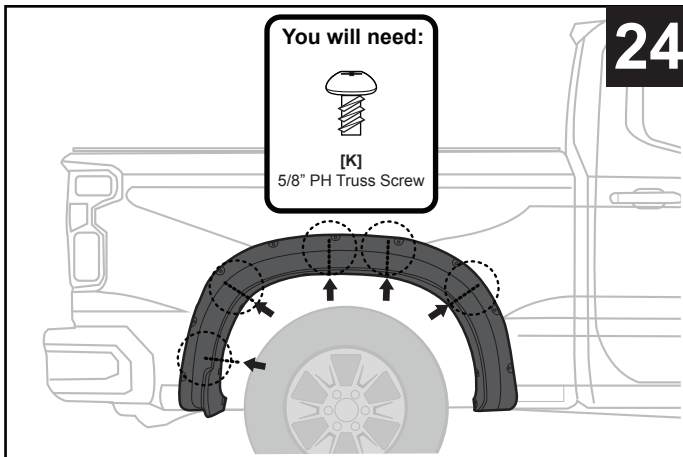
TYGER[®]



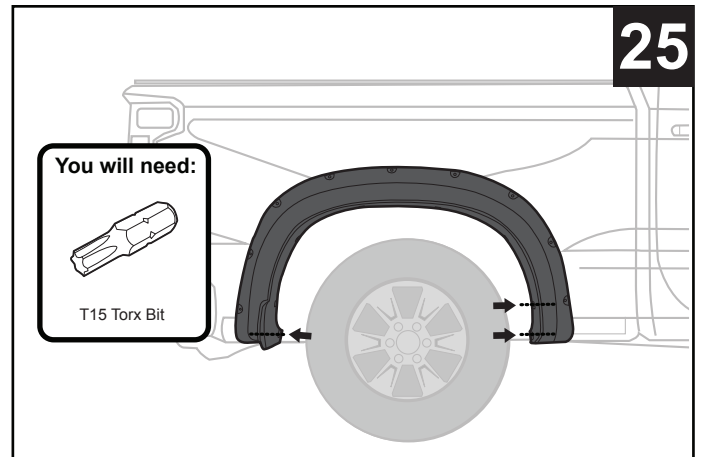
22. Install supplied Maylar Tab [H] at each location marked in STEP 21.



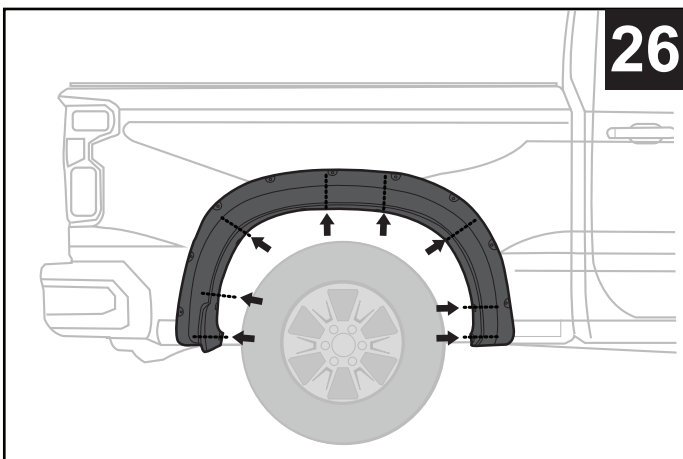
23. Install a supplied Long U-Clip [I] over each Maylar Tab [H].



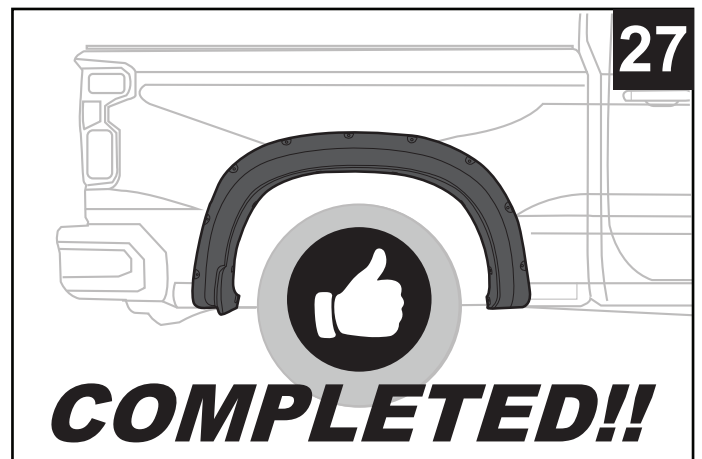
24. Hold flare to vehicle and install 5 supplied 5/8" PH Truss Screw [K] at each Clip location. NOTE: DO NOT TIGHTEN. Use an awl to align flare mounting holes.



25. Reinstall 3 factory T15 screws as indicated 3 locations above. NOTE: DO NOT TIGHTEN.



26. Press flare firmly against body and tighten all screws.

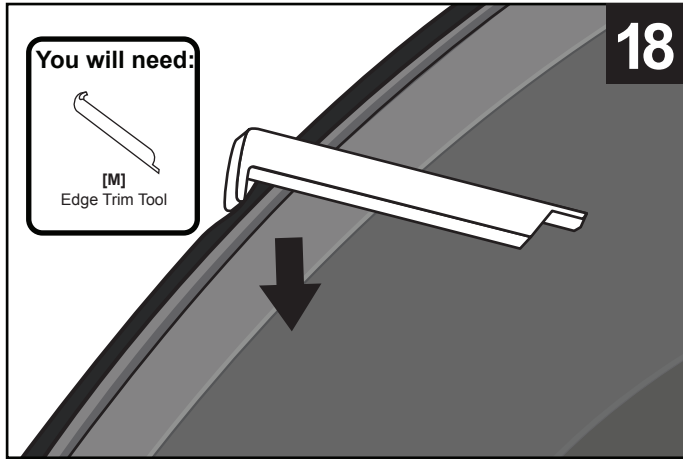


27. Completed rear flare installation.

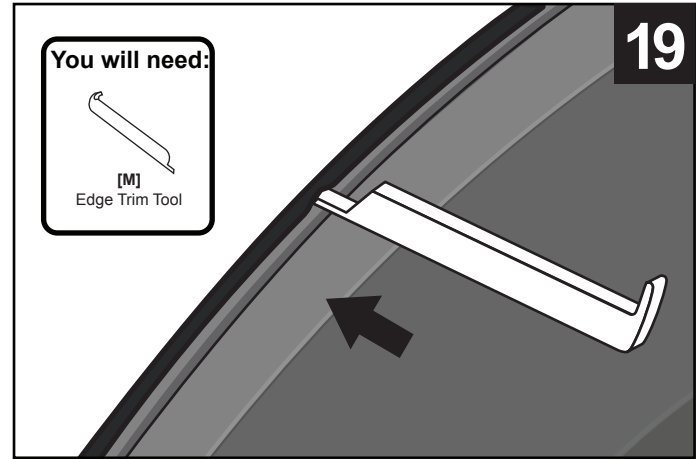


TYGER®

EDGE TRIM TOOL USAGE (OPTIONAL):

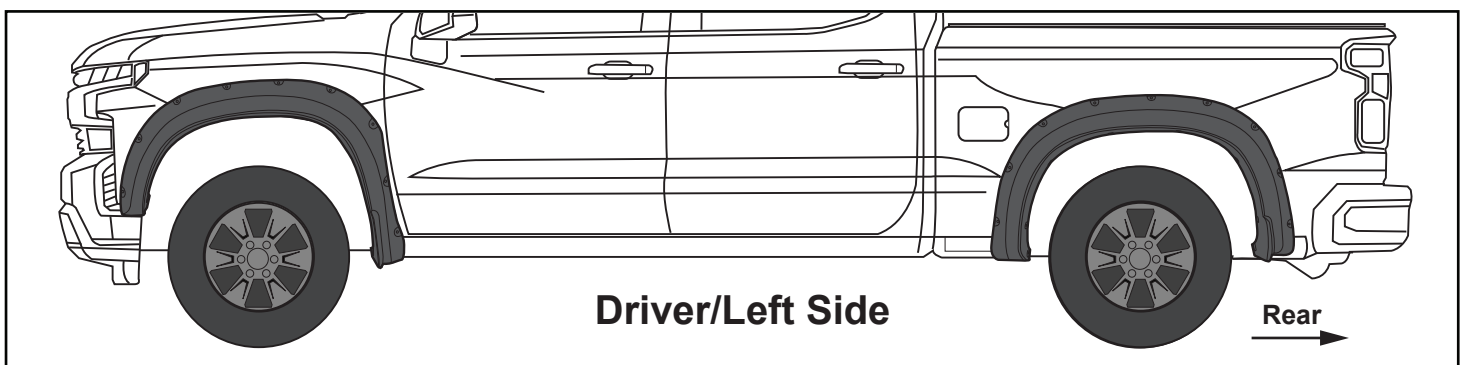
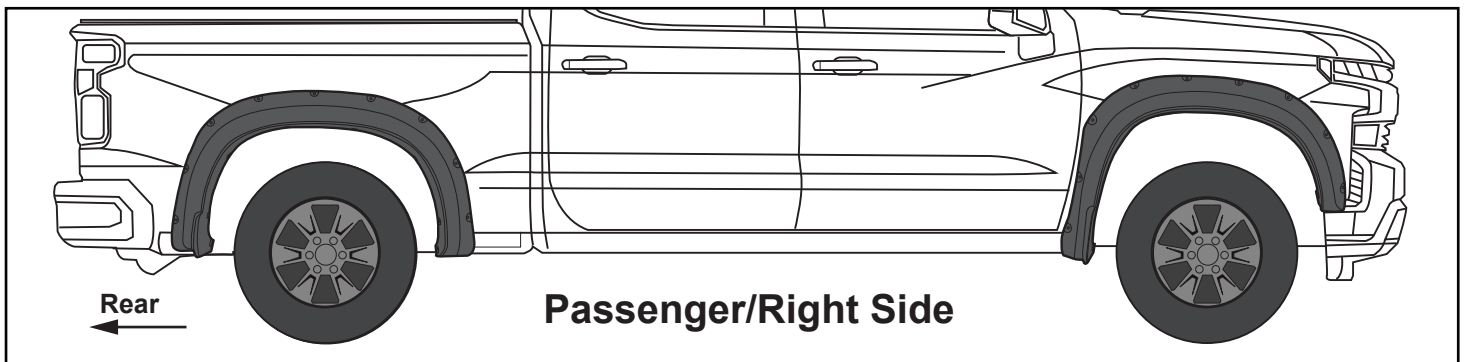


18. If needed, use supplied Edge Trim Tool [M] to trim outer edge by inserting the curved end, then sliding around the entire trim from one end to the other.



19. If needed, use supplied Edge Trim Tool [M] to trim inner edge by inserting the straight end, then sliding around the entire trim from one end to the other.

FINAL COMPLETED EFFECTS



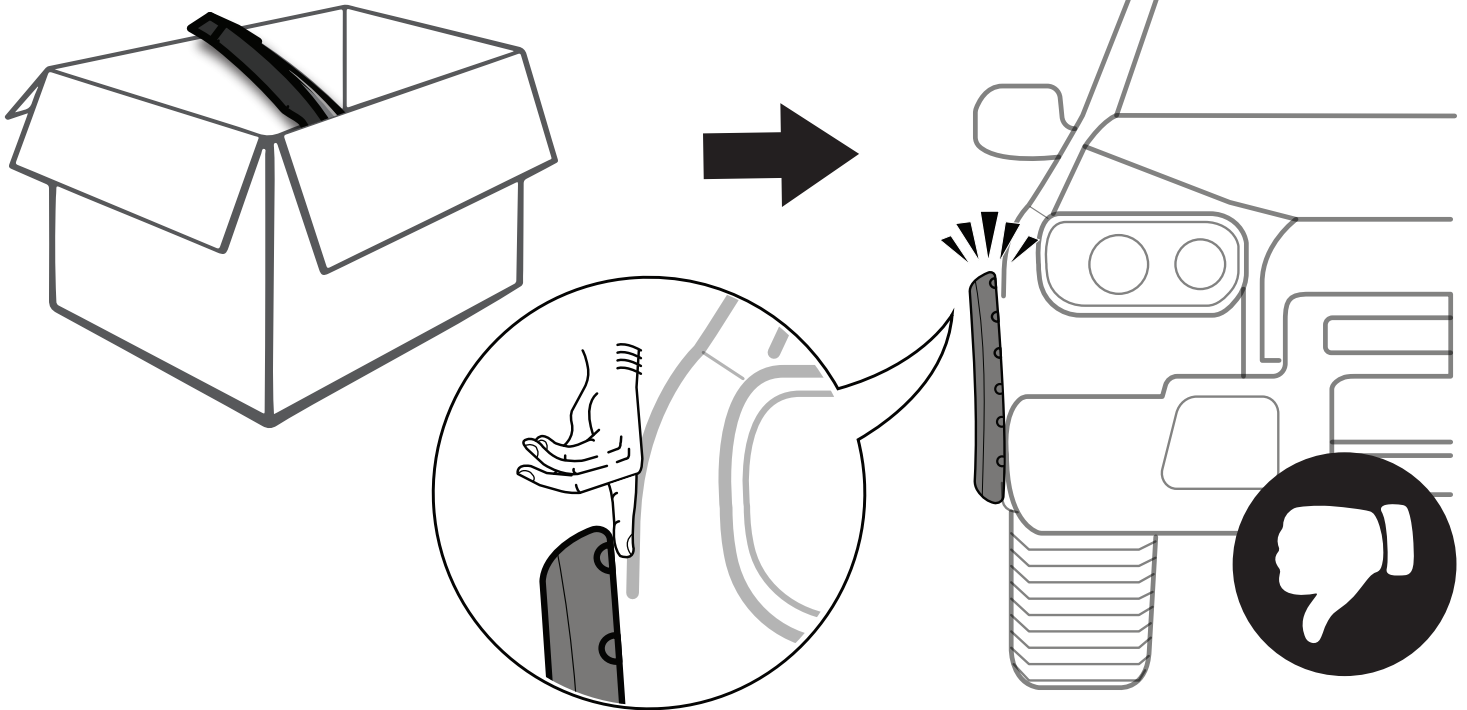
NOTE:

Above images are for reference ONLY, final result may vary.

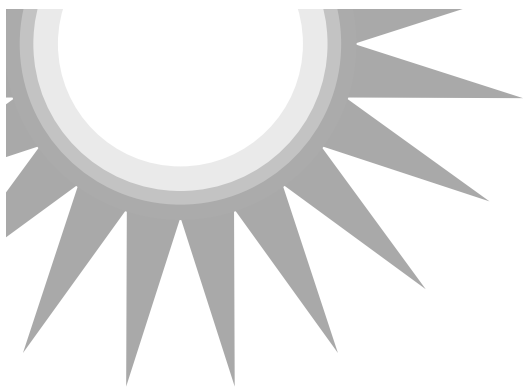


TYGER[®]

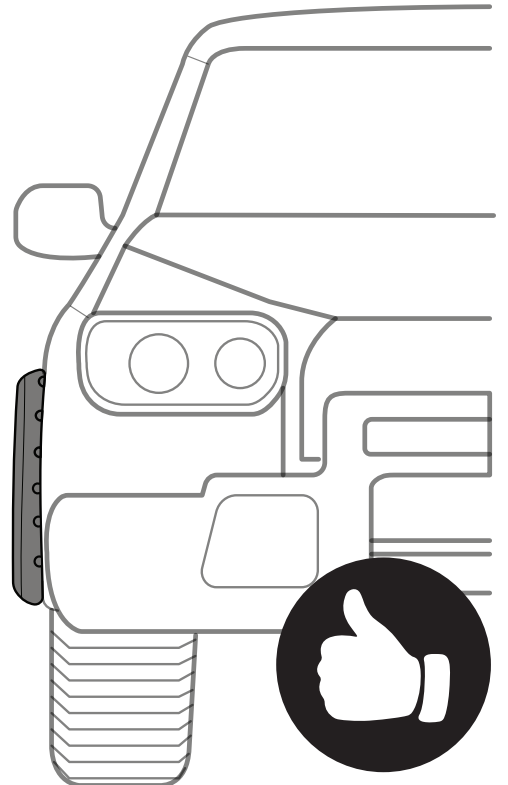
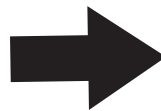
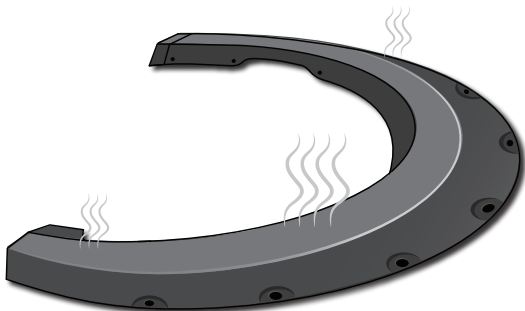
FITMENT OR GAP ISSUE?



SOLUTION!



AFTER
2-3
HOURS



*In winter, heat gun or hair dryer may be used instead.