



TYGER®

FENDER FLARE

Scan to Download the Latest Digital Version



TG-FF8F5037



ATTENTION!

PLEASE READ THE INSTRUCTIONS CAREFULLY BEFORE STARTING INSTALLATION. FOLLOW EACH STEP AS DESCRIBED ON THIS OFFICIAL GUIDE. FAILURE TO DO SO MAY CAUSE DAMAGE TO YOUR VEHICLE AND VOID THE WARRANTY.



WARNING!

DIRT OR DEBRIS MAY BECOME LODGED BETWEEN FLARES AND BODY PANEL CAUSING SCRATCHING AND PAINT-WEAR AS A RESULT OF VEHICLE VIBRATION. TYGER™ IS NOT RESPONSIBLE FOR SUCH DAMAGE, AND INSTALLATION IS DONE WITH BUYER'S UNDERSTANDING THAT THIS DAMAGE MAY OCCUR.

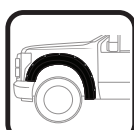
PRIOR TO INSTALLATION:



CHECK EVERYTHING BEFORE INSTALLATION



USE NON-ABRASIVE SURFACE TO INSTALL



VERIFY FITMENT OF FLARES TO VEHICLE



REMOVE DECALS & MUD FLAPS FIRST



ABRASIVE DETERGENT IS PROHIBITED

SAFETY INFORMATION:



NO AUTOMATIC BRUSH-STYLE WASH



CHECK TIGHTNESS



CHECK CAREFULLY BEFORE DRIVE

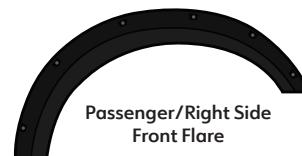
ABOUT PAINTING: Painted flares cannot be returned. Test fit before painting. We are not responsible for any costs that may incur if flares were painted without test fitting.

- Clean surface to be painted with a good grade degreaser. Do not use lacquer thinner or any solvent based product.
- Wipe flare surface completely dry with a tack rag prior to paint.
- Application of plastic adhesion promoter for PP plastic as per your paint system manufacturer's recommendations is required.
- Use a high quality enamel or polyurethane automotive paint to paint the flares.
- Not recommend to paint the edge trim, but if desired use a flex additive.

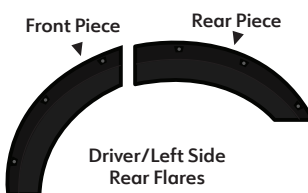
Parts List:



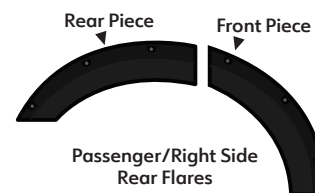
Driver/Left Side Front Flare



Passenger/Right Side Front Flare



Driver/Left Side Rear Flares



Passenger/Right Side Rear Flares



[A] Edge Trim



[B] Torx Bolt



[C] SS Washer



[D] Nylock Nut



[E] T45 Torx Bit



[H] U-Clip



[L] Nylon Retainer

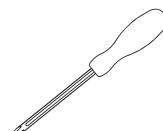


[M] Edge Trim Tool

Tools For Easier Installation



Utility Knife



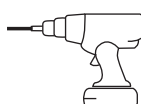
#2 Phillips Driver



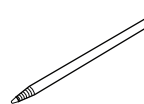
1/2" Wrench



Socket Wrench



Electric Drill



Grease Pencil



Work Gloves

DAMAGED or MISSING parts?

www.tygerauto.com/contact



Edge Trim Installation

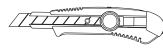
Peel 2 to 3" of red vinyl backing off from one end of the **Edge Trim [A]**.

- Apply **Edge Trim [A]** over top edge of flare with adhesive side attached to the inside edge of flare.
- Press **Edge Trim [A]** into place and apply thumb pressure to ensure good adhesion, continue to peel off red backing as you work your way along flare edge in one-foot increments.

You will need:



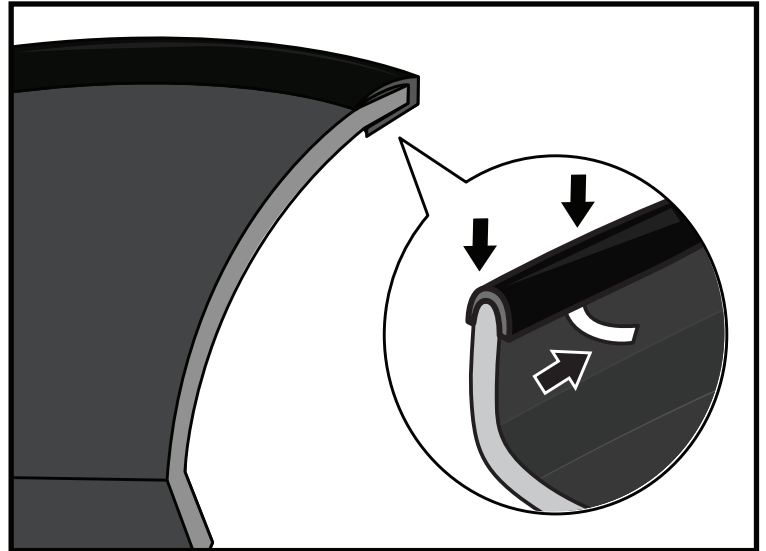
[A]
Edge Trim



Utility Knife

⚠ Note!

DO NOT stretch Edge Trim during application.



Decorative Rivet Installation

- Thread a **Torx Bolt [B]** with a **Washer [C]** through each of the pocket holes around the flare and use a **Nylock Nut [D]** to secure it from the other side. Use a socket wrench and the supplied **Torx Bit [E]** on an electric drill to tighten bolts. DO NOT over-tighten as this may damage the flare.

You will need:



[B]
Torx Bolt



[C]
SS Washer



[D]
Nylock Nut



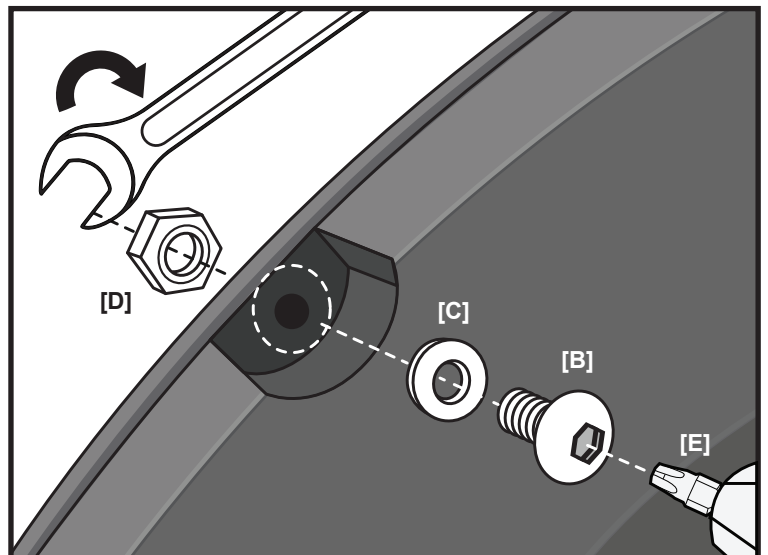
[E]
T45 Torx Bit



1/2"
Wrench

⚠ Note!

- DO NOT drill holes on the vehicle body as rivets are decorative and fasten only to the flare. Do not attempt to use the bolts to fasten flare to vehicle body.
- All exposed fasteners and bare metal should be treated with rust resistant paint before installing flares. Spray inner fender wells with undercoating after flare installation.
- Vehicles with large tires may require lowering bump stops and/or installing steering stops to prevent tire from contacting flares.
- Modification may be necessary to maintain a minimum 4" clearance between flares and exhaust pipes. (Exhaust gas should not vent directly onto flares)



Front Flares Installation

(Passenger Side shown)



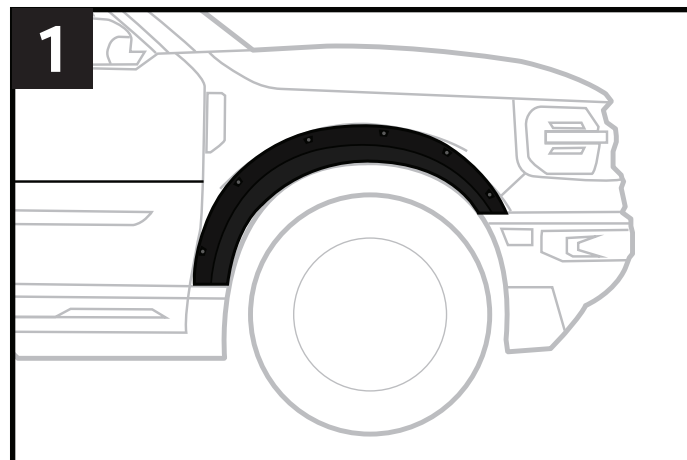
NOTE!

Only use appropriate cleaning supplies for your vehicle. If needed, clean and dry off before you begin installing.

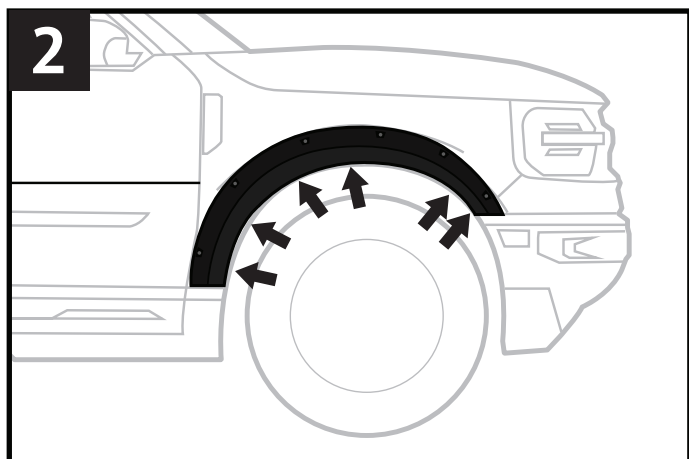


ATTENTION!

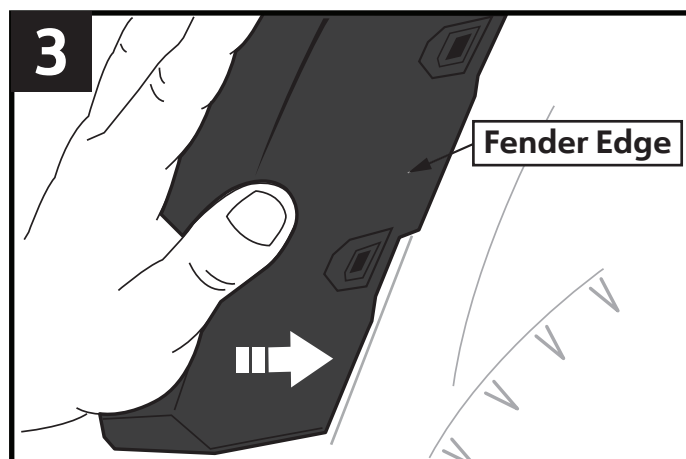
Work gloves are recommended for protection against possible sharp objects during installation.



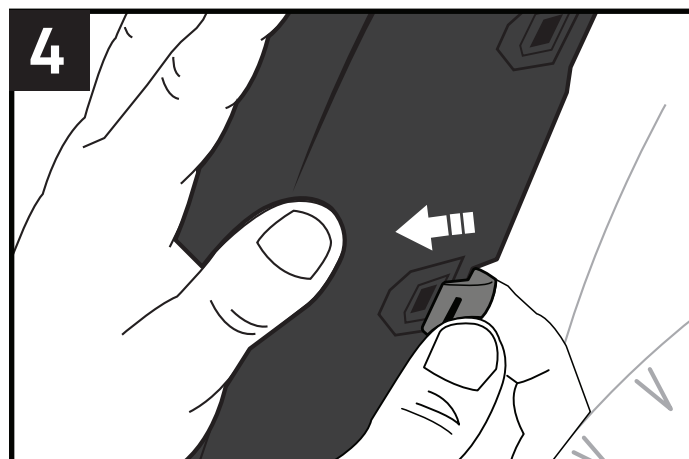
1. Take Passenger Front Tyger Flare and position it over the factory fender.



2. Note the 6 slotted clip locations on the Tyger Flare.



3. Press the Tyger Flare firmly against the factory fender until the edges of both are lined up.



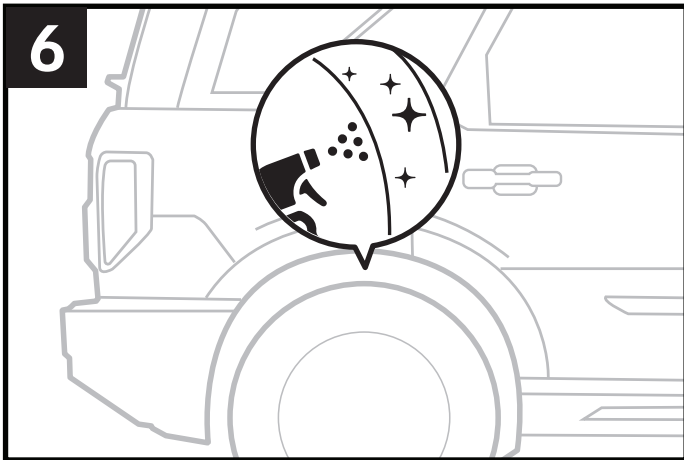
4. For each of the 6 slots on the Tyger Flare, Slide an U-Clip [H] underneath the factory fender so it's clamped with Tyger Flare. Make sure the dimple of the clip clicks into the slot.



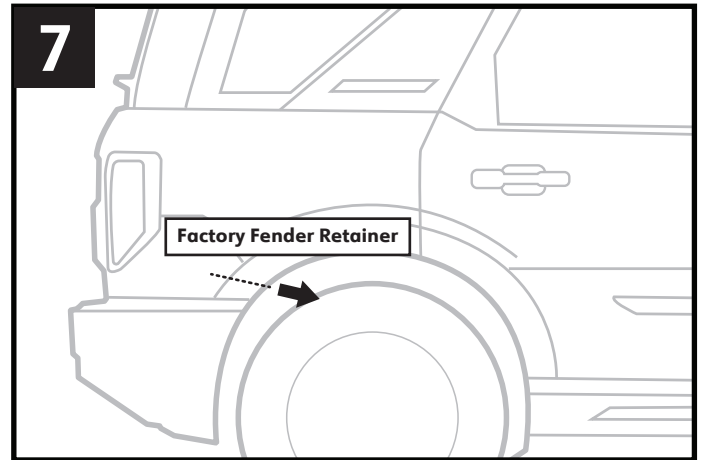
5. Repeat STEPS 1 to 4 to install the driver side rear flare.

Rear Flares Installation

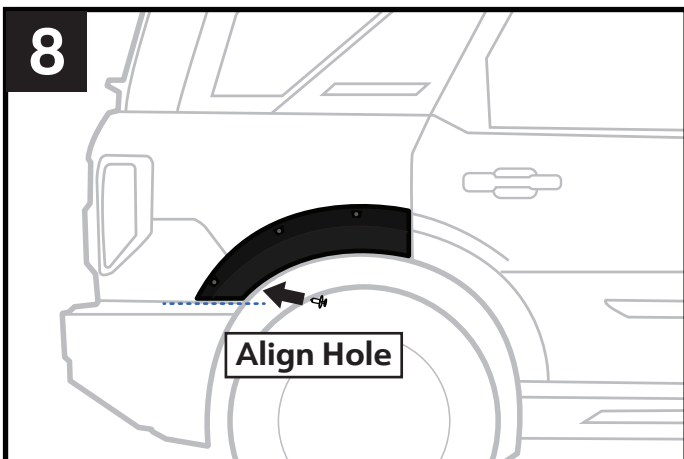
(Passenger Side shown)



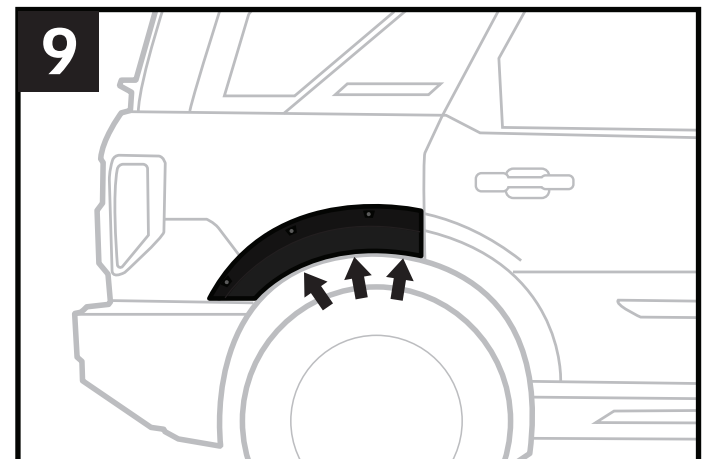
6. Before we begin, thoroughly clean the factory fender surface to remove any dirt and debris.



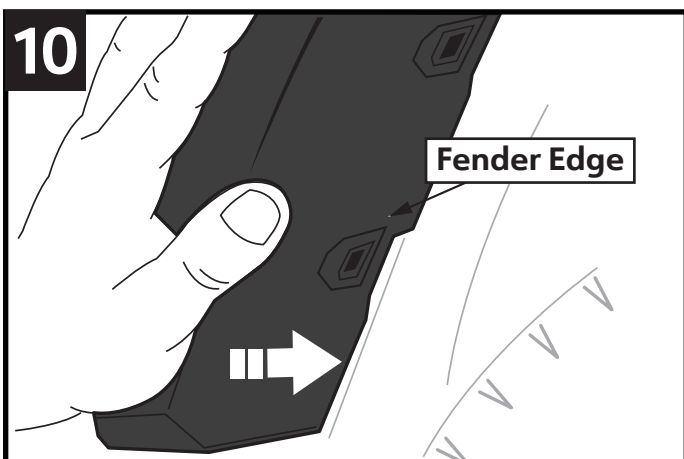
7. Remove factory retainer from rear side of wheel.



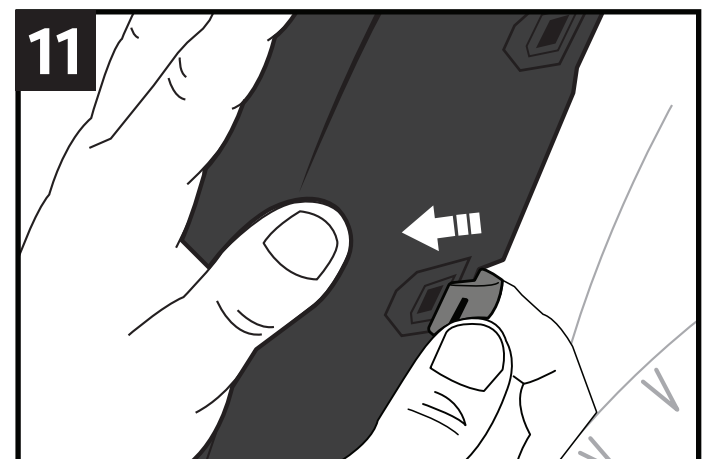
8. Take the rear piece of the rear flare and align it with the factory hole from STEP 7 then install a Nylon Retainer [L] to it.



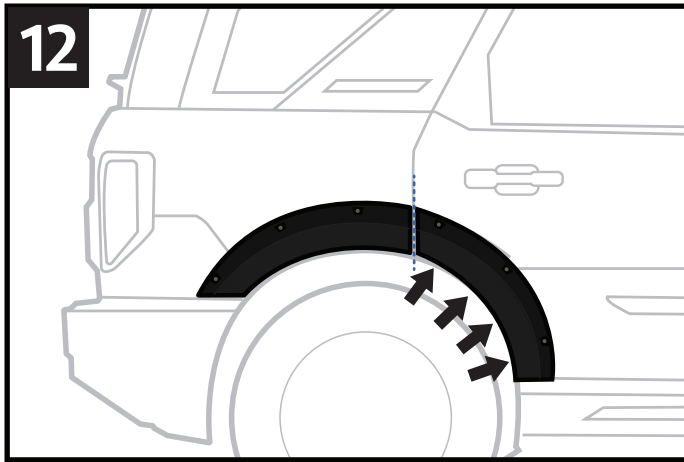
9. Identify the 3 upper clip slots on the rear piece.



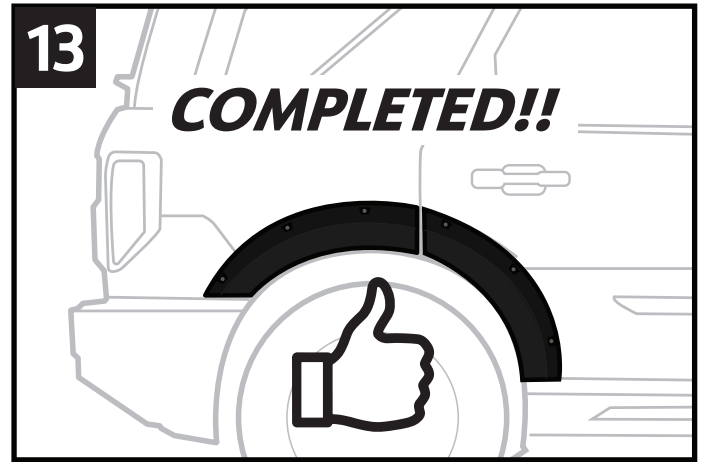
10. Press the Tyger Flare firmly against the factory fender until the edges of both are lined up.



11. For each of the 3 clip slots, slide an U-Clip [H] to attach the Tyger and factory fenders. Make sure the dimple of the clip clicks into the slot.

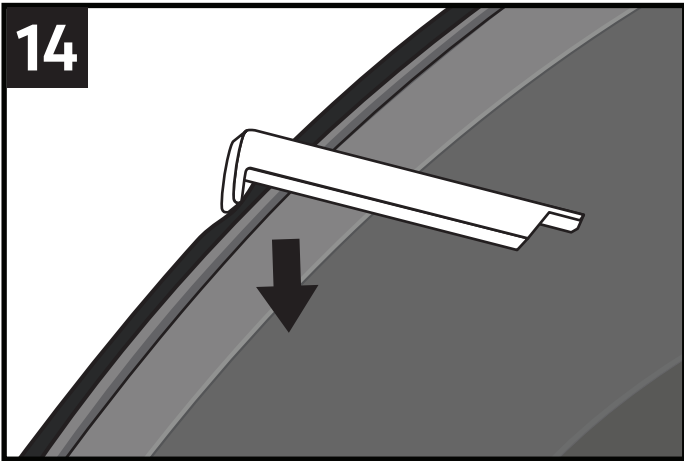


12. For the front piece of the rear flare, keep the door open and repeat **STEPS 10-11** to attach an U-Clip to each of the 4 slots.

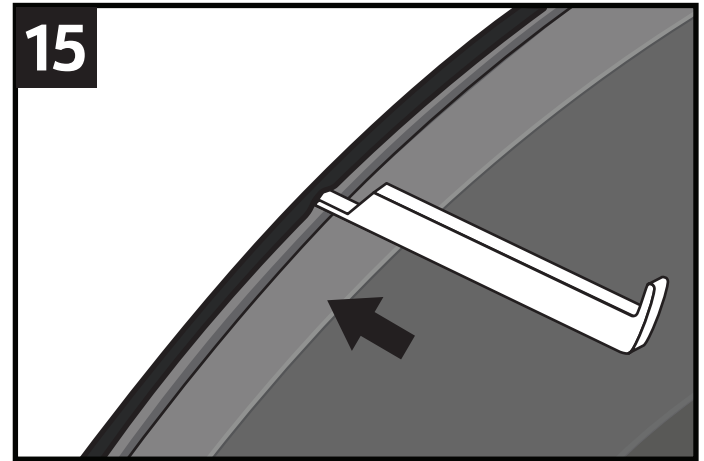


13. Repeat **STEPS 6 to 12** to install the driver side rear flare.

Edge Trim Tool Usage (Optional):

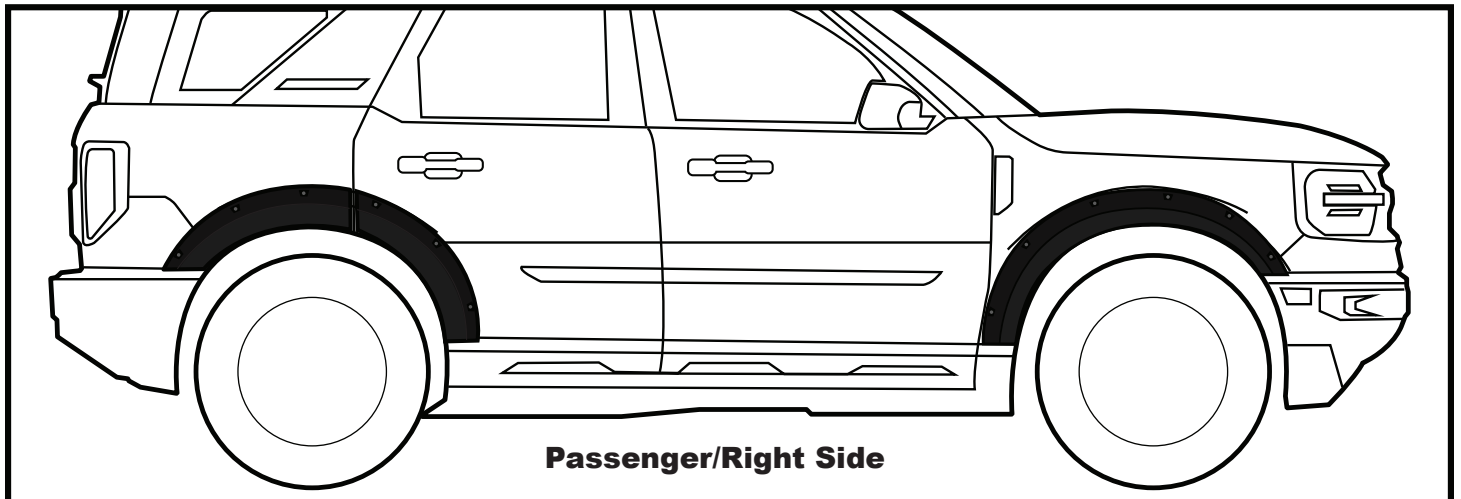


14. If needed, use supplied **Edge Trim Tool [M]** to trim outer edge by inserting the curved end, then sliding around the entire trim from one end to the other.



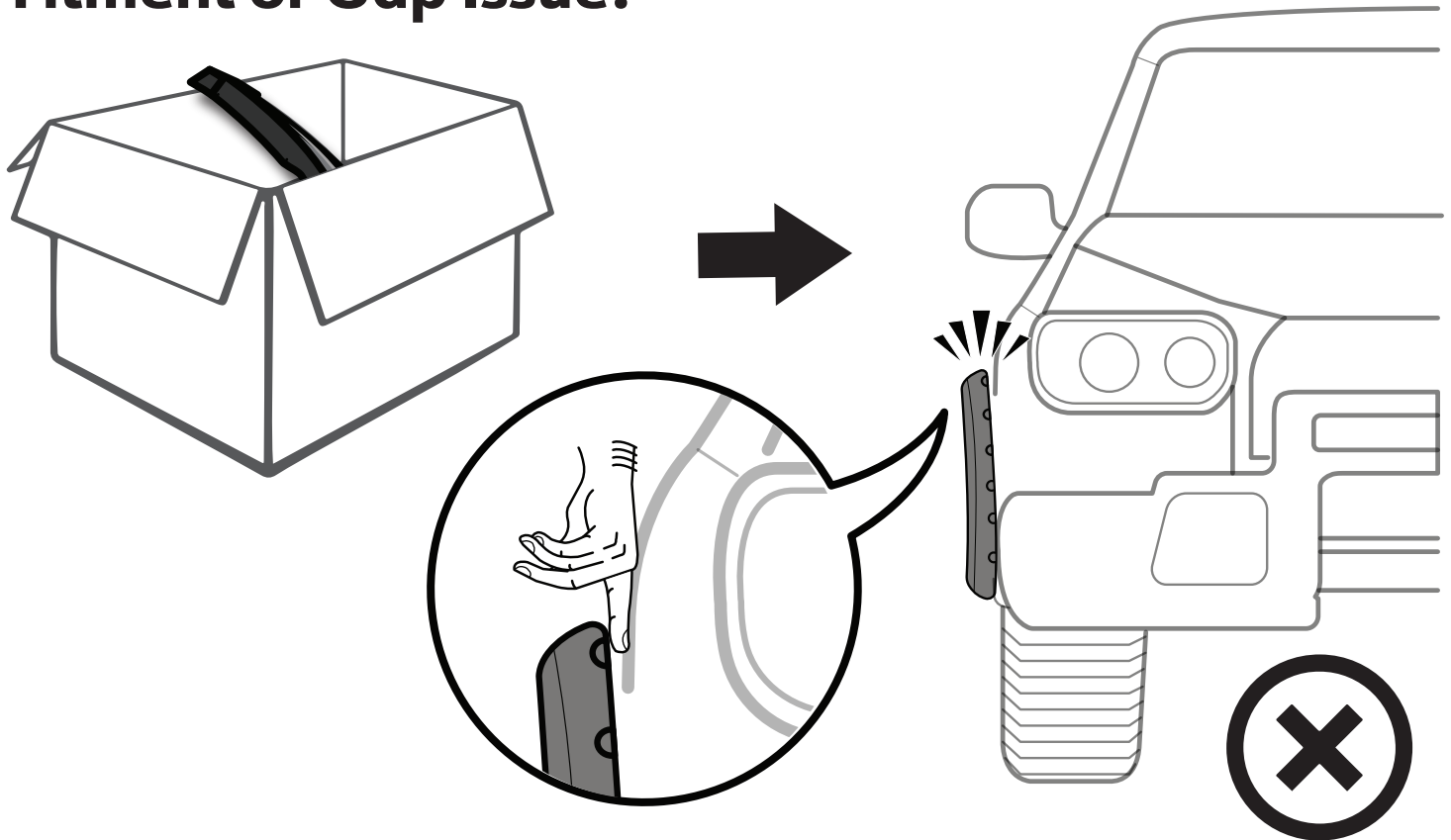
15. If needed, use supplied **Edge Trim Tool [M]** to trim inner edge by inserting the straight end, then sliding around the entire trim from one end to the other.

Final Result:

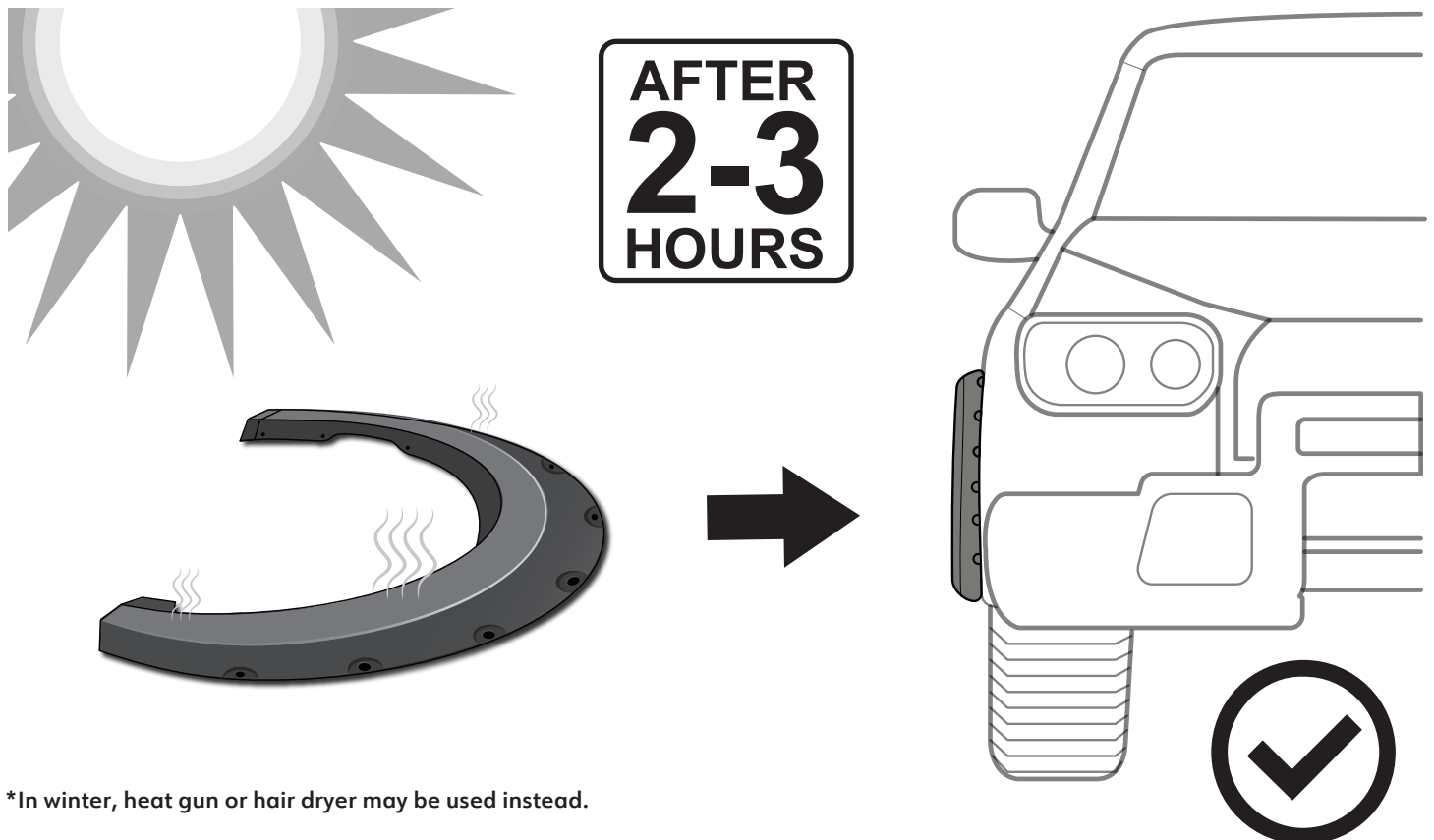


Note: Above image is for reference ONLY, final result may vary.

Fitment or Gap Issue?



Solution!



*In winter, heat gun or hair dryer may be used instead.