



TYGER®

FENDER FLARE

Scan to Download the Latest Digital Version



TG-FF8T5048



ATTENTION!

PLEASE READ THE INSTRUCTIONS CAREFULLY BEFORE STARTING INSTALLATION. FOLLOW EACH STEP AS DESCRIBED ON THIS OFFICIAL GUIDE. FAILURE TO DO SO MAY CAUSE DAMAGE TO YOUR VEHICLE AND VOID THE WARRANTY.



WARNING!

DIRT OR DEBRIS MAY BECOME LODGED BETWEEN FLARES AND BODY PANEL CAUSING SCRATCHING AND PAINT-WEAR AS A RESULT OF VEHICLE VIBRATION. TYGER™ IS NOT RESPONSIBLE FOR SUCH DAMAGE, AND INSTALLATION IS DONE WITH BUYER'S UNDERSTANDING THAT THIS DAMAGE MAY OCCUR.

PRIOR TO INSTALLATION:



CHECK EVERYTHING BEFORE INSTALLATION



USE NON-ABRASIVE SURFACE TO INSTALL



VERIFY FITMENT OF FLARES TO VEHICLE



REMOVE DECALS & MUD FLAPS FIRST



ABRASIVE DETERGENT IS PROHIBITED

SAFETY INFORMATION:



NO AUTOMATIC BRUSH-STYLE WASH



CHECK TIGHTNESS



CHECK CAREFULLY BEFORE DRIVE

ABOUT PAINTING: Painted flares cannot be returned. Test fit before painting. We are not responsible for any costs that may incur if flares were painted without test fitting.

- Clean surface to be painted with a good grade degreaser. Do not use lacquer thinner or any solvent based product.
- Wipe flare surface completely dry with a tack rag prior to paint.
- Application of plastic adhesion promoter for PP plastic as per your paint system manufacturer's recommendations is required.
- Use a high quality enamel or polyurethane automotive paint to paint the flares.
- Not recommend to paint the edge trim, but if desired use a flex additive.

PARTS LIST

x2 Front Inner Bracket



NOTE:

Driver's side Inner Bracket is marked with "LR", passenger's side Inner Bracket is marked with "RR".



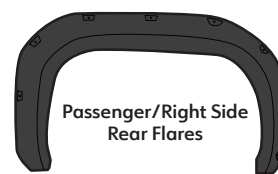
Driver/Left Side Front Flare



Driver/Left Side Rear Flares



Passenger/Right Side Front Flare



Passenger/Right Side Rear Flares

342"



[A] Edge Trim

x32



[B] Torx Bolt

x32



[C] SS Washer

x32



[D] Nylock Nut

x1



[E] T45 Torx Bit

x4



[F] U-Clip

x32



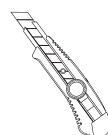
[G] 20mm Hex Flange Screw

x1

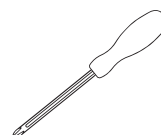


[H] Edge Trim Tool

Tools For Easier Installation



Utility Knife



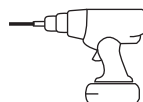
#2 Phillips Driver



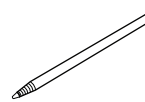
1/2" Wrench



Socket Wrench



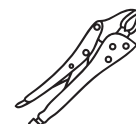
Electric Drill



Grease Pencil



Work Gloves



Vise Grips

DAMAGED or MISSING parts?

www.tygerauto.com/contact



EDGE TRIM INSTALLATION

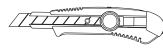
Peel 2 to 3" of red vinyl backing off from one end of the **Edge Trim [A]**.

- Apply **Edge Trim [A]** over top edge of flare with adhesive side attached to the inside edge of flare.
- Press **Edge Trim [A]** into place and apply thumb pressure to ensure good adhesion, continue to peel off red backing as you work your way along flare edge in one-foot increments.

You will need:



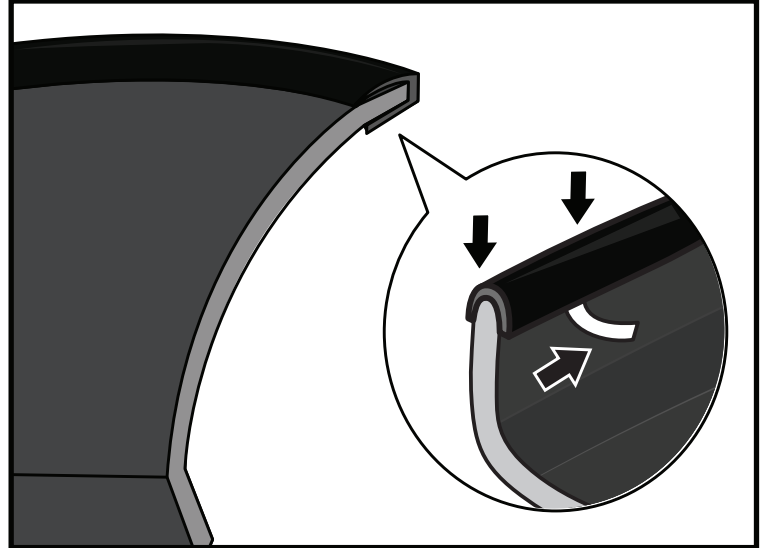
[A]
Edge Trim



Utility Knife

⚠ Note!

DO NOT stretch Edge Trim during application.



DECORATIVE RIVET INSTALLATION

- Thread a **Torx Bolt [B]** with a **Washer [C]** through each of the pocket holes around the flare and use a **Nylock Nut [D]** to secure it from the other side. Use a socket wrench and the supplied **Torx Bit [E]** on an electric drill to tighten bolts. DO NOT over-tighten as this may damage the flare.

You will need:



[B]
Torx Bolt



[C]
SS Washer



[D]
Nylock Nut



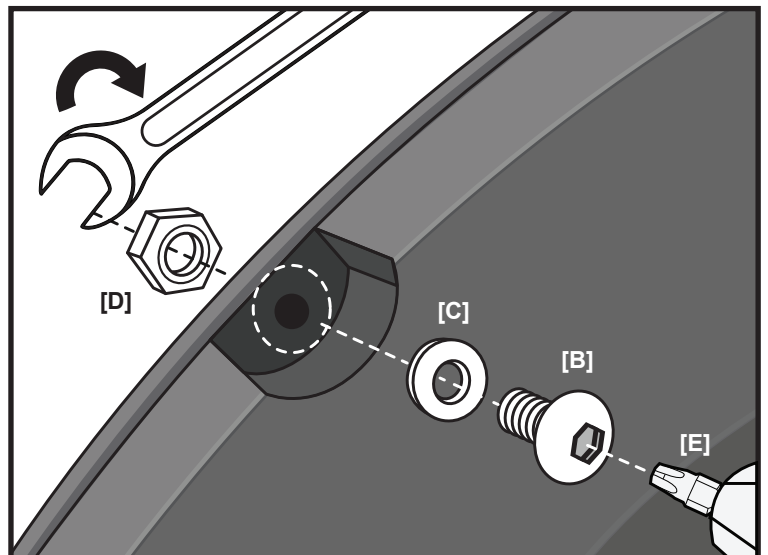
[E]
T45 Torx Bit



1/2" Wrench

⚠ Note!

- DO NOT drill holes on the vehicle body as rivets are decorative and fasten only to the flare. DO NOT attempt to use the bolts to fasten flare to vehicle body.
- All exposed fasteners and bare metal should be treated with rust resistant paint before installing flares. Spray inner fender wells with undercoating after flare installation.
- Vehicles with large tires may require lowering bump stops and/or installing steering stops to prevent tires from contacting flares.
- Modification may be necessary to maintain a minimum 4" clearance between flares and exhaust pipes. (Exhaust gas should not vent directly onto flares)



FRONT FLARES INSTALLATION

(Driver Side shown)



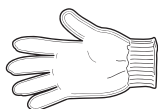
NOTE!

Only use appropriate cleaning supplies for your vehicle. If needed, clean and dry off before you begin installing.

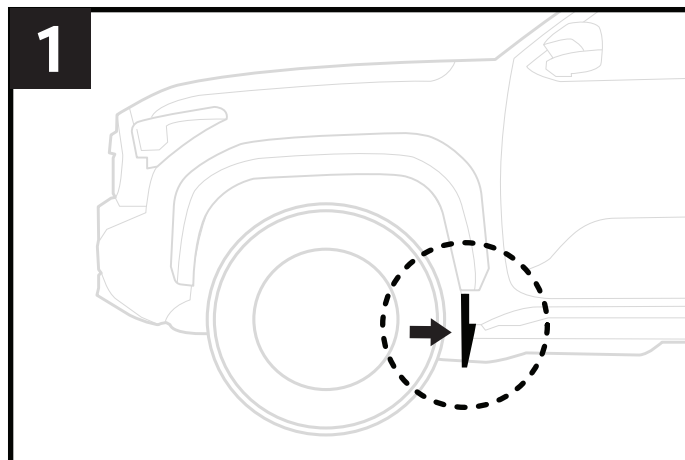


ATTENTION!

Work gloves are recommended for protection against possible sharp objects during installation.

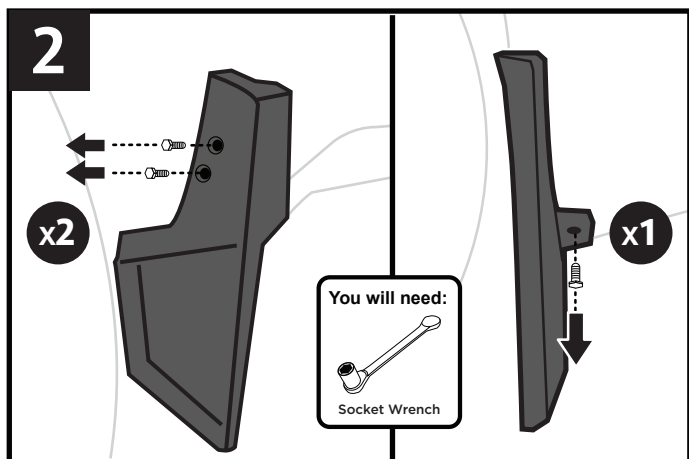


1



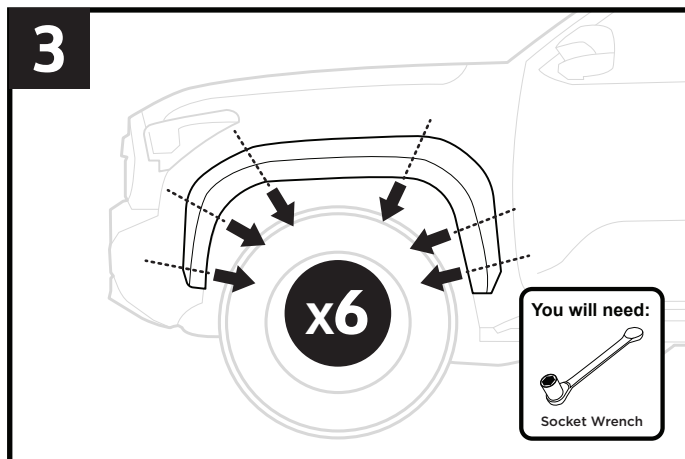
1. Start from the Driver/Left Side. Check if any mud flaps are installed.

2



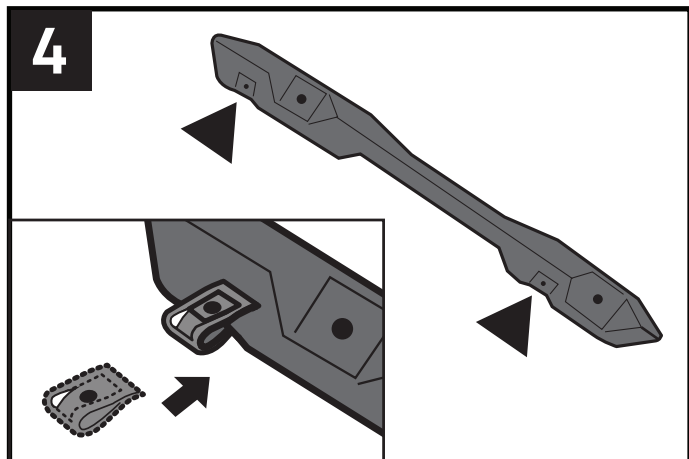
2. If mud flaps are installed, uninstall it by removing 2 screws near the top and 1 screw from underneath as shown. Mudflap and screws cannot be reused for this installation.

3



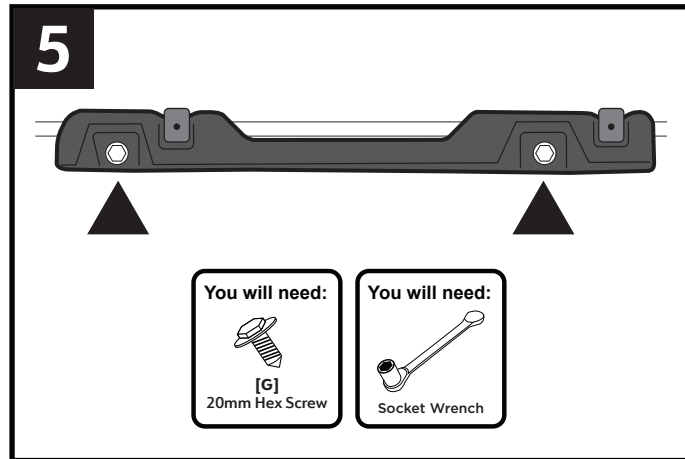
3. Follow the diagram to remove 6 factory bolts from the factory fender positions shown. Tyger Auto Fender Flare will be installed directly over factory fender.

4

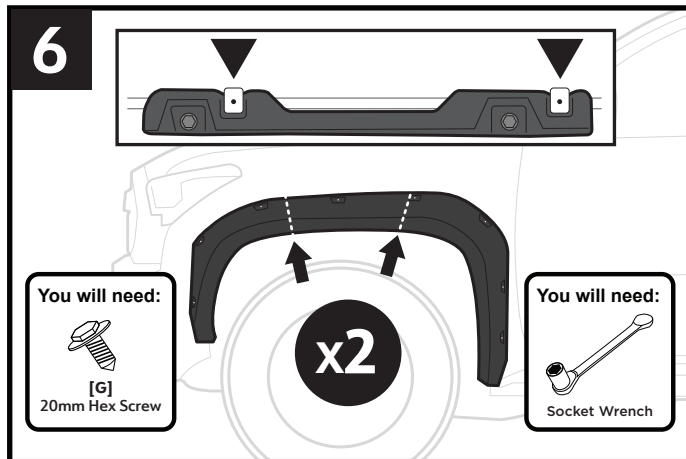


4. Take the Left/Front Inner Bracket (marked "LF") and attach 2 supplied [F] U-Clips to the locations shown. The Right/Front Inner Bracket is marked "RF".

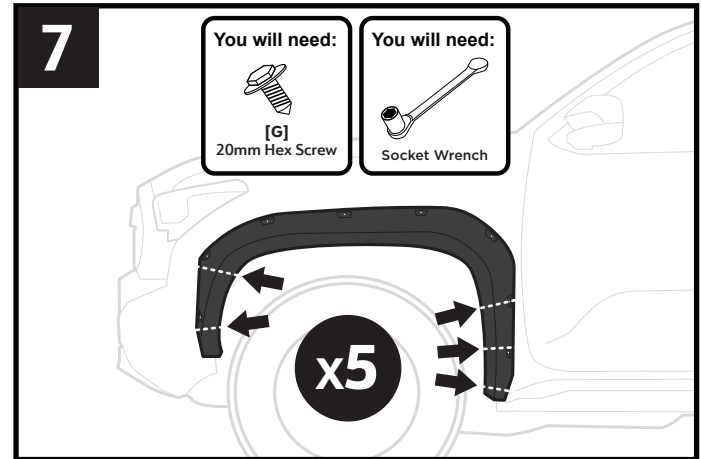
5



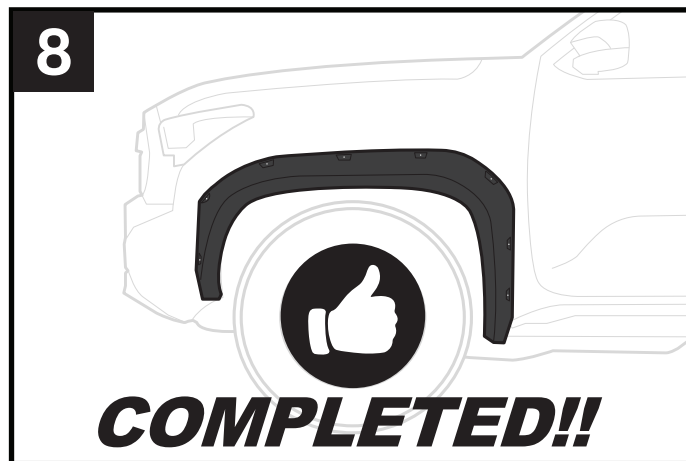
5. Take the Inner Bracket and align the holes (without clips) with the 2 uppermost factory holes. Then attach the bracket to the fender with 2 supplied [G] 20mm Hex Flange Screws and tighten them.



6. Take the Left/Front Flare and press against factory fender. Align the Upper 2 fender flare holes with the clipped bracket holes then take 2 supplied [G] Flange Screws to attach the flare to the bracket as shown. Apply pressure to each mounting point and then tighten each screw.

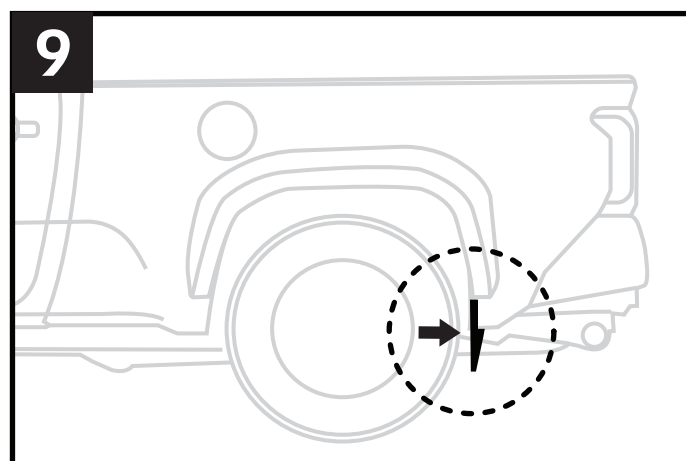


7. Align the 5 fender flare holes with the factory hole positions as shown. Install 5 supplied [G] Flange Screws to attach Fender Flare to factory fender. Apply pressure to each mounting position and then tighten each screws.

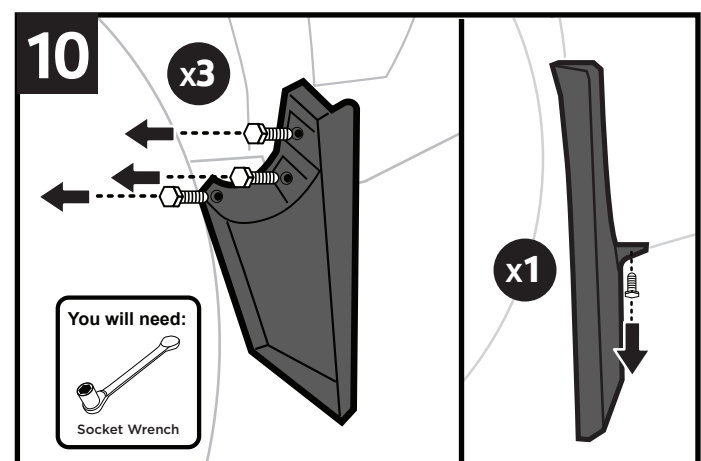


8. Adjust the fit as needed before completion. Take the same steps for the Right/Front Fender Flare.

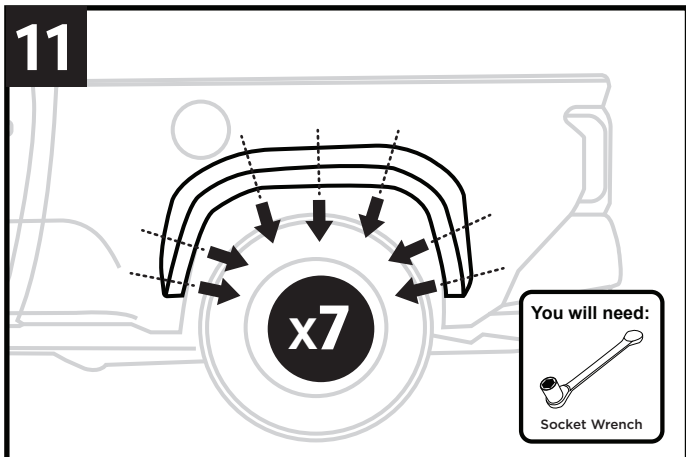
REAR FLARES INSTALLATION (Driver Side shown)



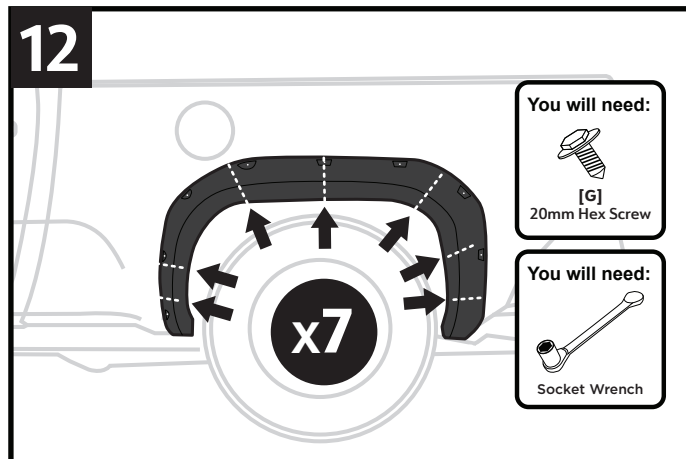
9. Start from the Driver/Left Side. Check if any mud flaps are installed.



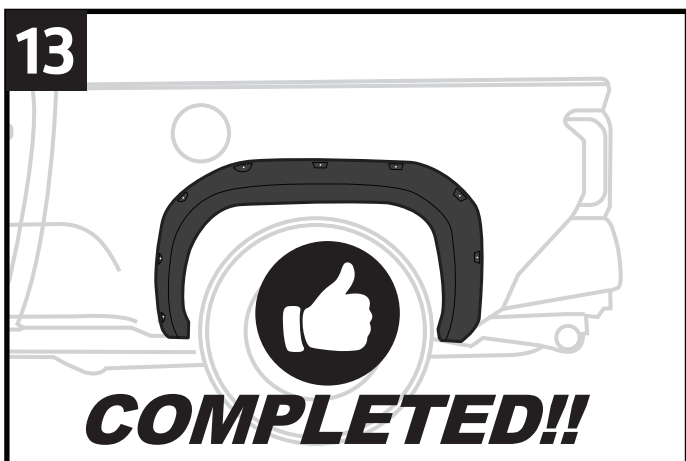
10. If mud flaps are installed, uninstall it by removing 3 screws near the top and 1 screw from underneath as shown. Mudflap and screws cannot be reused for this installation.



11. Follow the diagram to remove 7 factory bolts from the factory fender positions shown. Tyger Auto Fender Flare will be installed directly over factory fender.

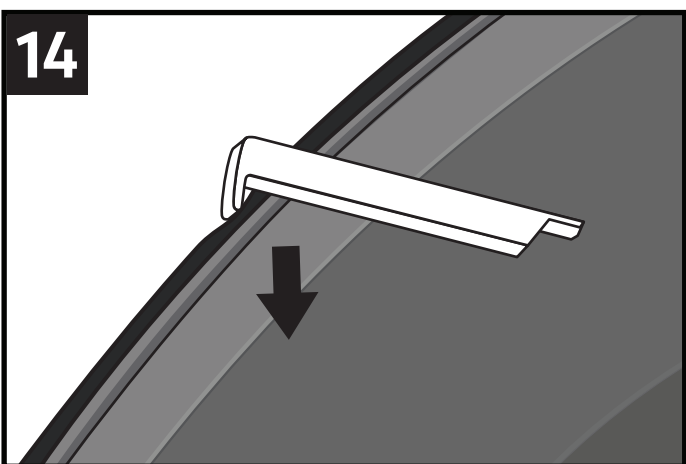


12. Take the Left/Rear Flare and press against factory fender. Align the 7 fender flare holes with the factory hole positions as shown. Install 7 supplied **[G] Flange Screws** to attach Fender Flare to factory fender. Apply pressure to each mounting position and then tighten each screw.

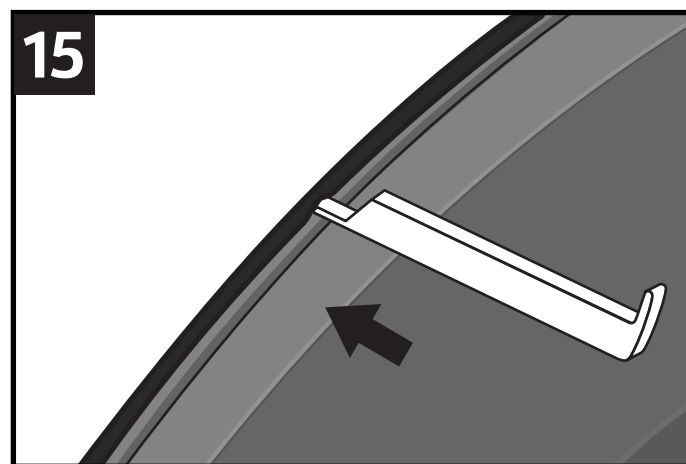


13. Adjust the fit as needed before completion. Take the same steps for the Right/Rear Fender Flare.

Edge Trim Tool Usage (Optional):

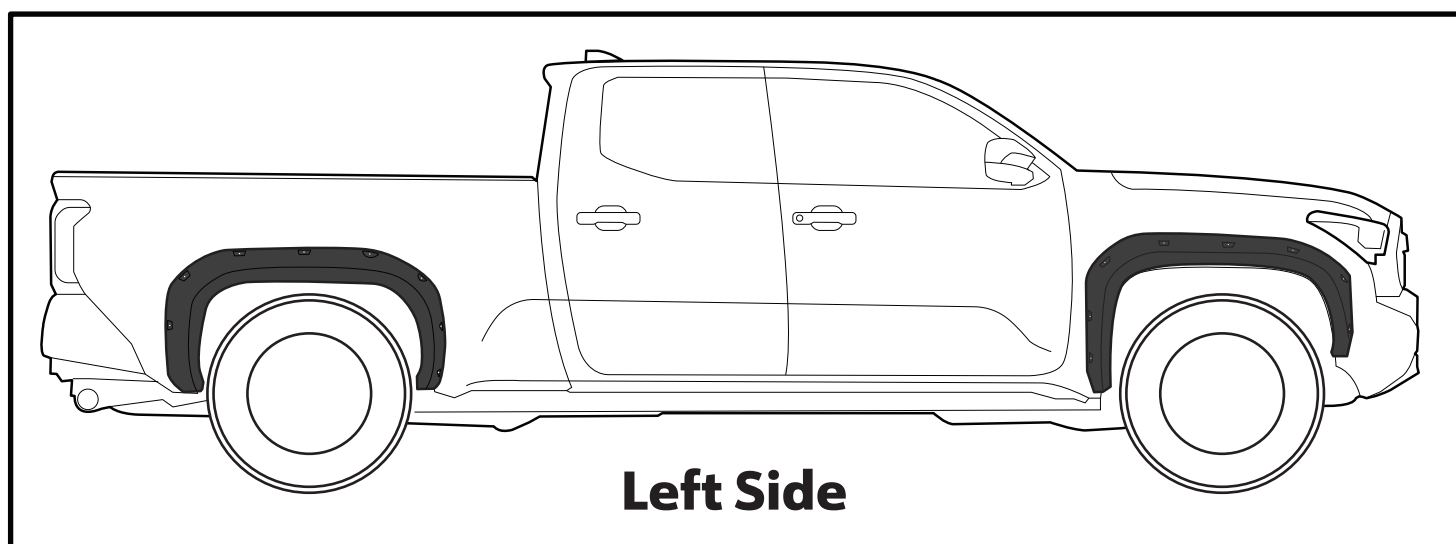
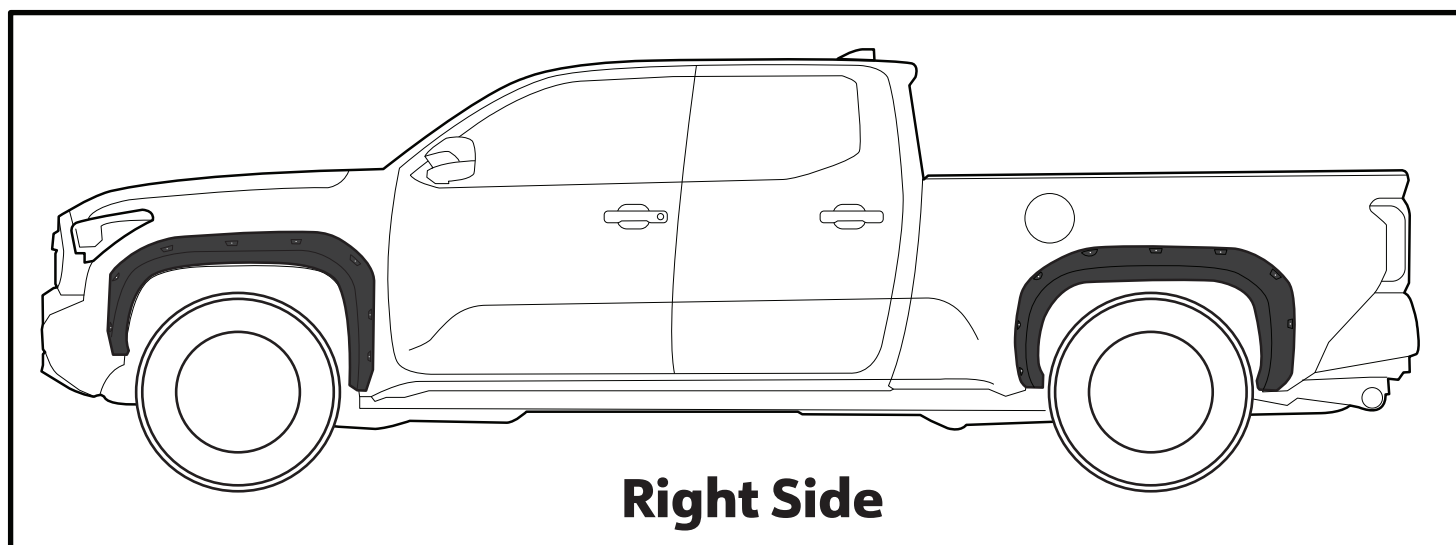


14. If needed, use supplied **Edge Trim Tool [H]** to trim outer edge by inserting the curved end, then sliding around the entire trim from one end to the other.



15. If needed, use supplied **Edge Trim Tool [H]** to trim inner edge by inserting the straight end, then sliding around the entire trim from one end to the other.

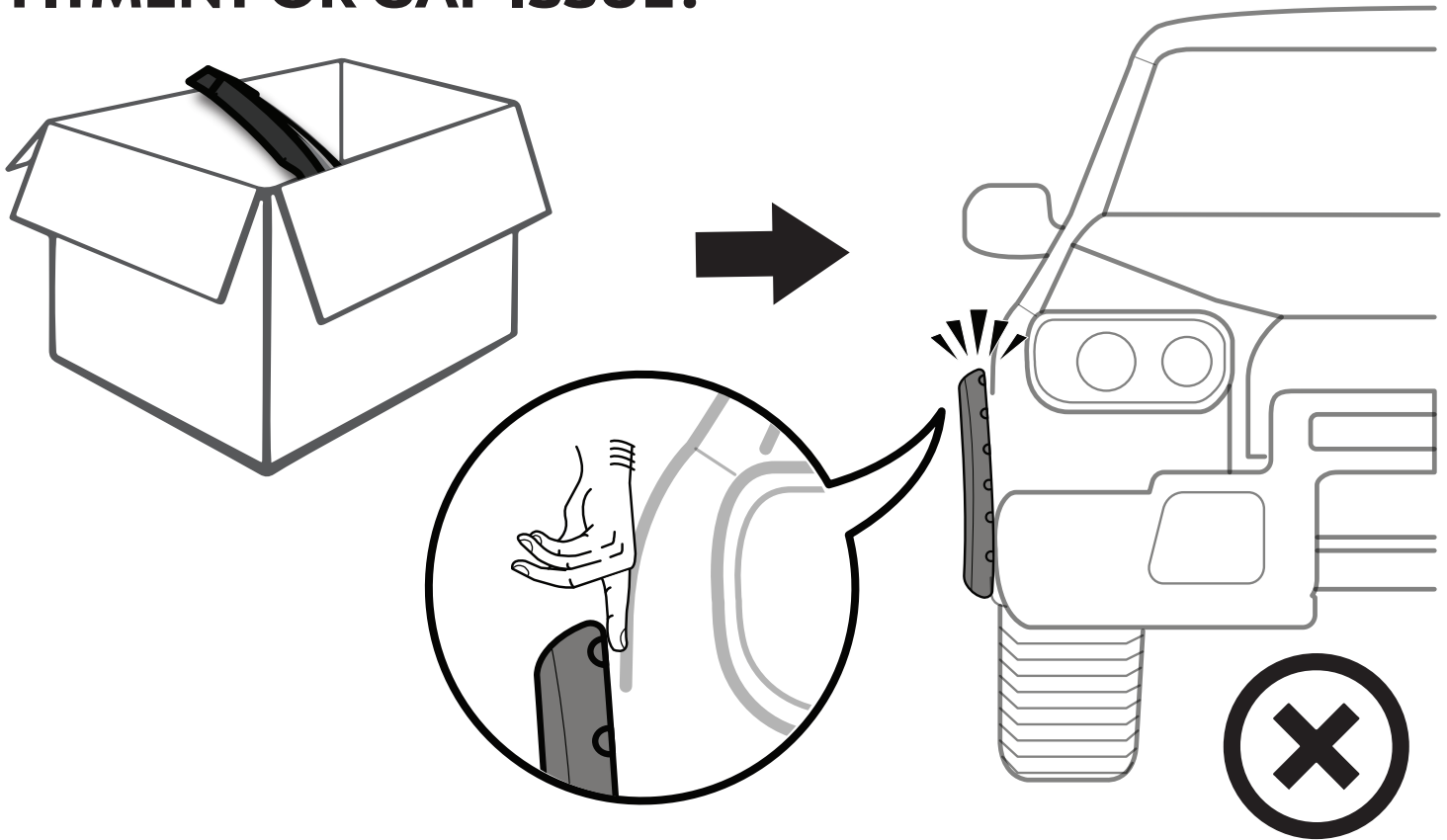
FINAL COMPLETED EFFECTS



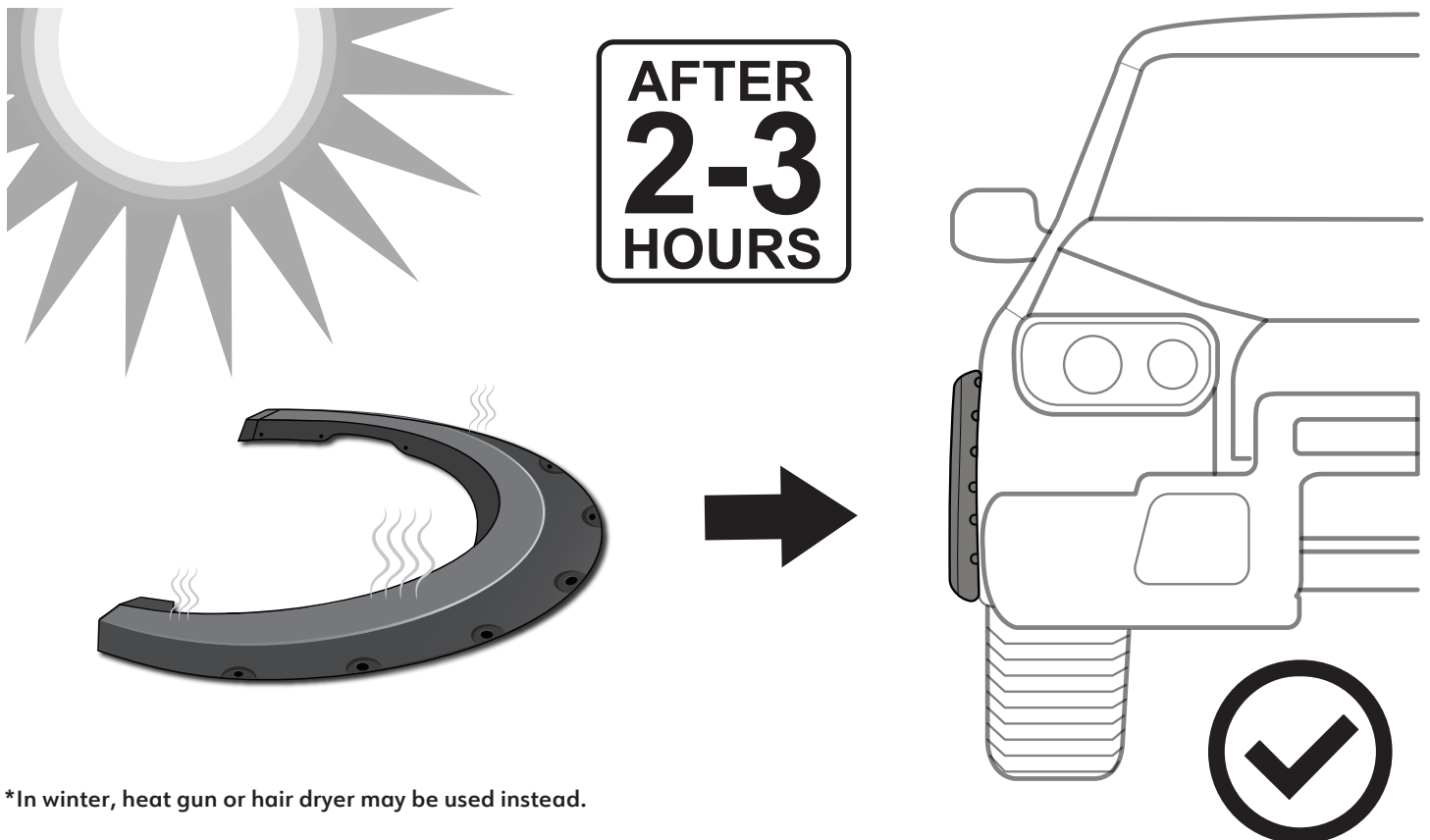
NOTE:

Above images are for reference ONLY, final result may vary.

FITMENT OR GAP ISSUE?



SOLUTION!



*In winter, heat gun or hair dryer may be used instead.