



TYGER®

TYGER FURY STEPS

TG-FS2D20108

Parts List

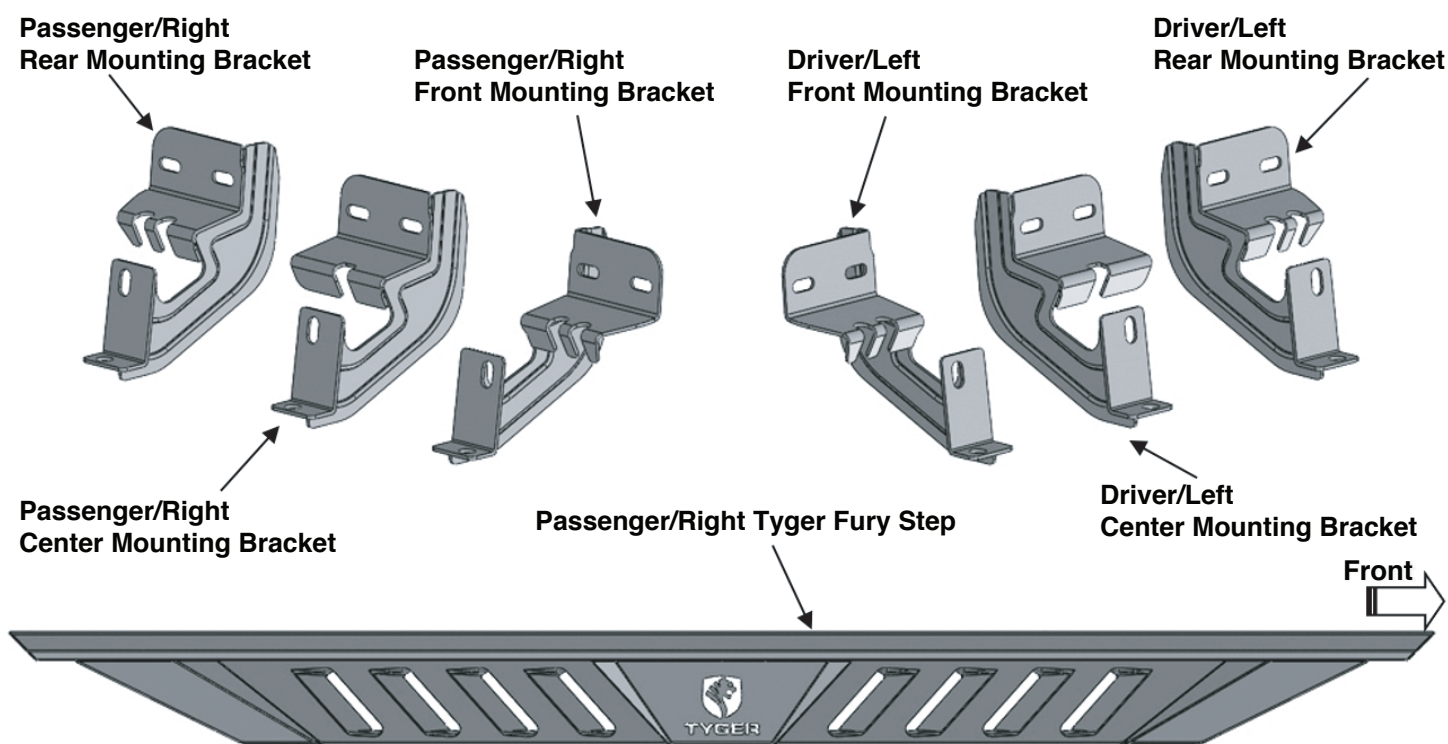
- x1** Driver/Left TYGER Fury Step
- x1** Passenger/Right TYGER Fury Step
- x2** Driver Front and Passenger Rear Mounting Brackets Front Lower Mounting Brackets
- x2** Passenger Front and Driver Rear Mounting Brackets
- x1** Driver/Left Center Mounting Bracket
- x1** Passenger/Right Center Mounting Bracket
- x6** 8mm Bolt Plates
- x12** 8mm x 30mm Hex Bolts
- x12** 8mm x 25mm Combo Bolts
- x12** 8mm x 24mm OD x 2mm Flat Washers
- x12** 8mm Lock Washers
- x6** 8mm Hex Nuts
- x6** 8mm Plastic Retainers
- x10** 6mm x 25mm Hex Bolts
- x20** 6mm x 22mm OD x 2mm Flat Washers
- x10** 6mm Nylon Lock Nuts
- x4** 16mm x 60mm Spacers
- x2** 16mm x 34mm Spacers

BEFORE INSTALLATION

READ INSTRUCTIONS CAREFULLY BEFORE STARTING INSTALLATION. REMOVE CONTENTS FROM BOX AND VERIFY ALL PARTS ARE PRESENT. FAILURE TO IDENTIFY DAMAGE BEFORE INSTALLATION COULD LEAD TO A REJECTION OF ANY CLAIM. IF MISSING PARTS OR ANY DAMAGE FOUND, PLEASE TAKE A PICTURE FOR THE CLAIM PURPOSE. TO FILE YOUR CLAIM, PLEASE VISIT: WWW.TYGERAUTO.COM/CONTACT

TORQUE VALUES

Fastener Size	Class 8.8 Torque (ft-lbs)	Class 10.9 Torque (ft-lbs)
6mm	6-7	6-7
8mm	15-16	22-23
10mm	31-32	44-45
12mm	54-55	78-79
14mm	87-88	125-126





TYGER®

PROCEDURE:

REMOVE CONTENTS FROM BOX. VERIFY ALL PARTS ARE PRESENT. READ INSTRUCTIONS CAREFULLY BEFORE STARTING INSTALLATION. DRILLING MAY BE REQUIRED.

STEP 1

Starting at the passenger side/front of the vehicle, remove the sealing tape covering the factory holes in the side of the inner panel (Fig 1).

Passenger/Right Side Installation Pictured



(Fig 1) 2009-mid 2015 passenger front mounting location (No factory holes in pinch weld 2009-2012 models)

STEP 2

Determine the correct procedure to attach the Passenger Side Front Mounting Bracket for your model/year:

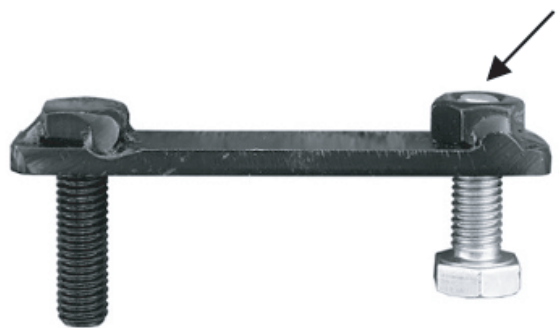
Models without factory threaded inserts in body panel:

a. Select (1) 8mm Bolt/nut Plate (Fig 2). Partially thread an 8mm Hex Bolt onto the threaded end of the Nut Plate (Fig 3). Thread the Hex Bolt in until it is flush with the welded nut.

Passenger/Right Side Installation Pictured

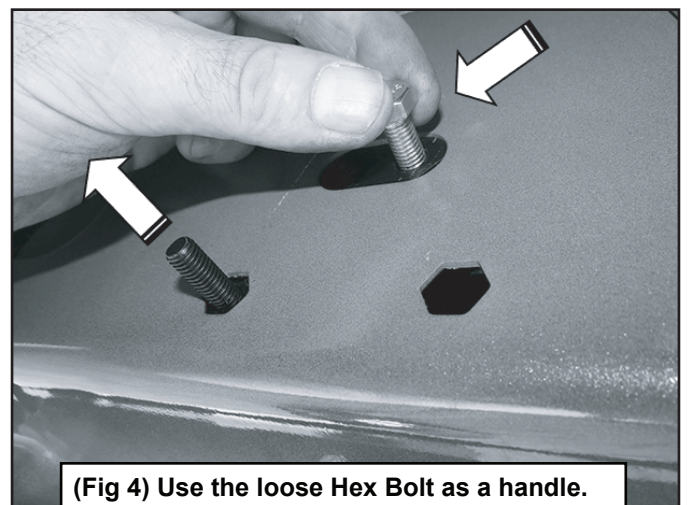


(Fig 2) 8mm Bolt-8mm Nut Plate, NOTE: 8mm Bolt-Nut Plate is not required on models with threaded inserts



(Fig 3) Thread (1) 8mm Hex Bolt into the nut on the plate. Stop when bolt reaches end of nut as pictured

b. Use the Hex Bolt as a handle and insert the Bolt and Nut Plate into the oval hole (Fig 4). Feed the threaded bolt on the Bolt Plate through one of the hex shaped factory holes.



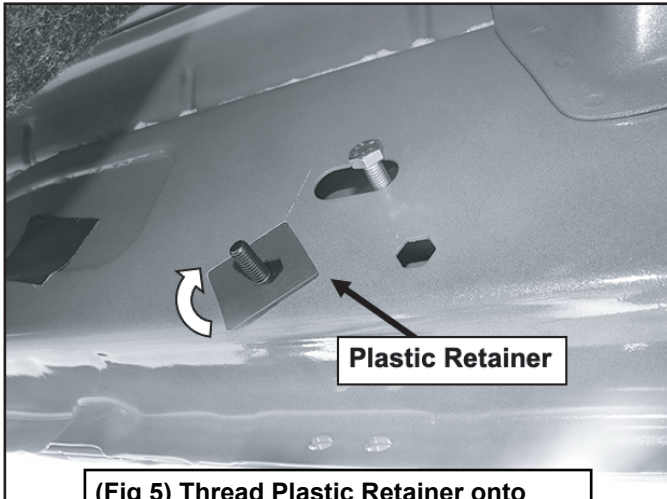
(Fig 4) Use the loose Hex Bolt as a handle. Insert the Bolt Plate into the oval hole and feed the threaded end out either factory hex shaped hole. IMPORTANT: DO NOT let go of the hex bolt until after Plastic Retainer has been threaded onto bolt (Fig 5)



TYGER®

c. Thread (1) 8mm Plastic Retainer onto the threaded end and down tight against the body panel (Fig 5).

NOTE: The Plastic Retainer is designed to keep the Bolt/Nut Plate from falling into the body panel and to aid in Bracket installation.

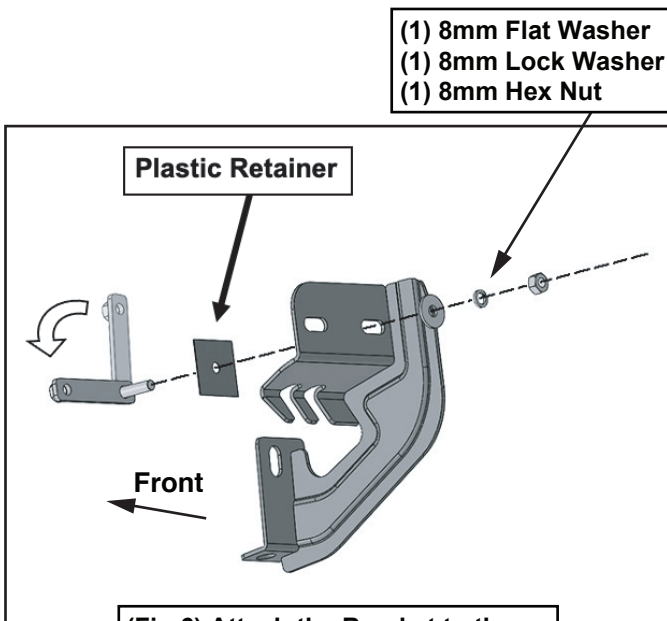


(Fig 5) Thread Plastic Retainer onto Bolt Plate to hold Bolt Plate in position.

d. Select (1) Passenger/Right Mounting Bracket (Fig 6). Attach the Bracket to the threaded end of the Bolt Plate with (1) 8mm Flat Washer, (1) 8mm Lock washer and (1) 8mm Hex Nut (Fig 6).

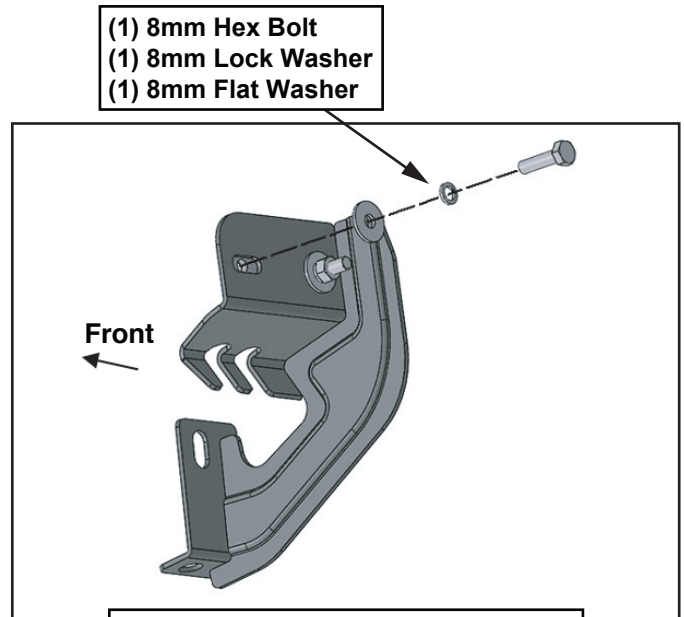
IMPORTANT: Passenger/Right Front Mounting Bracket is the same as the Driver/Left Rear Mounting Bracket. DO NOT tighten hardware.

Passenger/Right Side Installation Pictured



(Fig 6) Attach the Bracket to the threaded bolt on the Bolt/Nut Plate

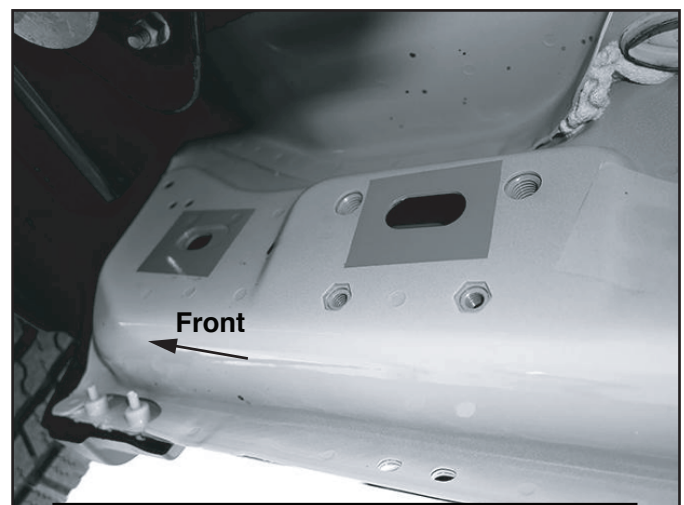
e. Remove the 8mm Hex Bolt from the nut on the Bolt Plate from **STEP 2a**. Rotate the Bolt on the Bolt Plate until the threaded nut lines up with the remaining hole in the Mounting Bracket and body panel (Fig 7). Attach the Bracket to the threaded Nut Plate with (1) 8mm x 30mm Hex Bolt, (1) 8mm Lock Washer and (1) 8mm Flat Washer (Fig 7). DO NOT tighten hardware.



(Fig 7) Attach Bracket to the threaded hole in the Bolt/Nut Plate

Models with factory threaded inserts:

a. Attach the Passenger/Right Front Mounting Bracket to the threaded inserts with (2) 8mm x 30mm Hex Bolts, (2) 8mm Lock Washers and (2) 8mm Flat Washer (Figs 8 & 9). DO NOT tighten hardware.



(Fig 8) Passenger side front mid 2015-on, models with factory installed threaded inserts



TYGER®

- (1) 8mm Hex Bolt
- (1) 8mm Lock Washer
- (1) 8mm Flat Washer

Front

(Fig 9) Passenger/Right Front Mounting Bracket illustrated for models with threaded inserts

STEP 3

Attach the Bracket to the back of the pinch weld with (2) 6mm Hex Bolts, (4) 6mm Flat Washers, (1) 16mm x 60mm Spacer and (2) 6mm Flange Nuts (Fig 10).

IMPORTANT: 2009-12 models not equipped with factory holes will require drilling through the pinch weld to fully attach Bracket. DO NOT drill through pinch weld at this time, (see **STEP 7**).

- (2) 6mm Hex Bolts
- (4) 6mm Flat Washers
- (1) 16mm x 60mm Spacer
- (2) 6mm Flange Nuts

Front

(Fig 10) Attach Bracket to back of pinch weld (models with factory holes in pinch weld only)

STEP 4

Move along the side of the body panel to the center mounting location (Fig 11). Repeat **STEPS 1-3** to install (1) Passenger/Right Center Mounting Bracket to the center mounting location. Note that you will be using small spacer and one set of hardware instead for the pinch weld location..

Front

(Fig 11) Passenger/Right center location

STEP 5

Move to the rear location (Fig 12). Repeat **STEPS 1-3** to attach (1) Driver/Left Front Mounting Bracket to the passenger/right rear mounting location (They are identical).

Passenger/Right Side Installation Pictured

Rear

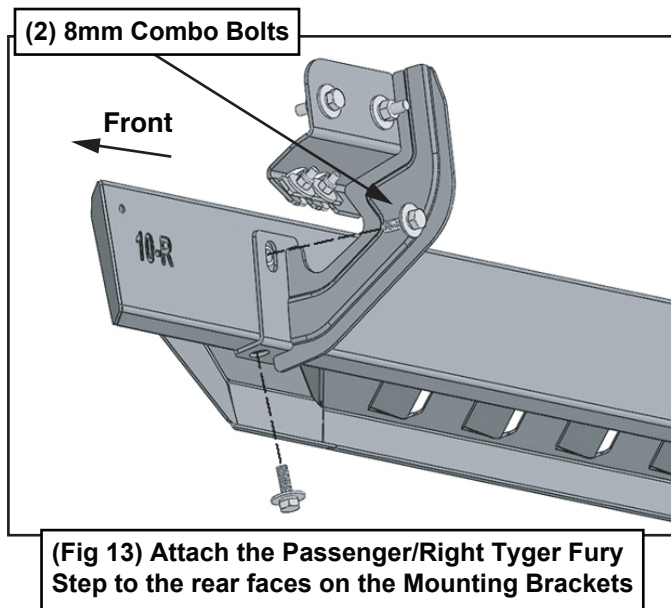
(Fig 12) Passenger/Right rear mounting location



TYGER®

STEP 6

Select the Passenger/Right Tyger Fury Step. Attach the Step to the Mounting Brackets with (6) 8mm Combo Bolts (Fig 13). DO NOT tighten hardware.



STEP 7

Properly level and adjust the Tyger Fury Step and fully tighten all hardware.

2009-12 models requiring drilling through pinch trim:

- Level the Step to the vehicle. Make sure all (3) Brackets are tight against the bottom of the body panel and tighten all mounting hardware.
- Mark the location of the slots onto the pinch weld.
- Temporarily remove the Step and the (3) Mounting Brackets. Drill (2) 1/4" holes through the pinch weld for the Front and Rear Bracket. Drill (1) 1/4" holes through the pinch weld for the Center Bracket.

IMPORTANT: DO NOT drill too close to the bottom edge of the pinch weld. Drill the holes in the center of the marked slots.

- Repeat **STEP 3** to attach the Brackets to the drilled holes in the pinch weld. Check for level then fully tighten all hardware.

STEP 8

Repeat **STEPS 1-7** to attach the Driver/Left Tyger Fury Step.

STEP 9

Do periodic inspections to the installation to make sure that all hardware is secure and tight.