



TYGER FURY STEPS

TG-FS2T50148

BEFORE INSTALLATION

READ INSTRUCTIONS CAREFULLY BEFORE STARTING INSTALLATION. REMOVE CONTENTS FROM BOX AND VERIFY ALL PARTS ARE PRESENT. FAILURE TO IDENTIFY DAMAGE BEFORE INSTALLATION COULD LEAD TO A REJECTION OF ANY CLAIM. IF MISSING PARTS OR ANY DAMAGE FOUND, PLEASE TAKE A PICTURE FOR THE CLAIM PURPOSE. TO FILE YOUR CLAIM, PLEASE VISIT: WWW.TYGERAUTO.COM/CONTACT

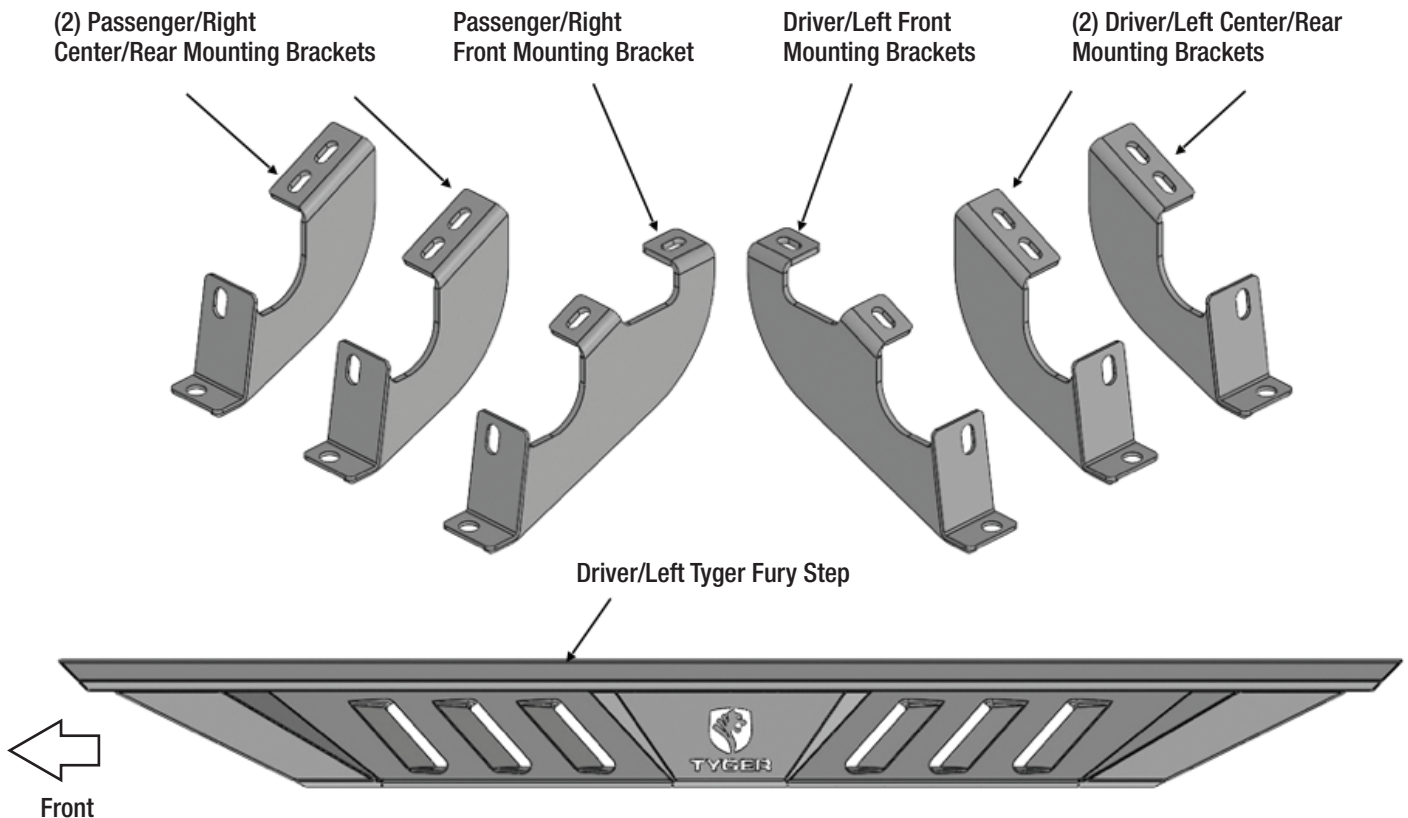
TORQUE VALUES

Fastener Size	Class 8.8 Torque (ft-lbs)	Class 10.9 Torque (ft-lbs)
6mm	6-7	6-7
8mm	15-16	22-23
10mm	31-32	44-45
12mm	54-55	78-79
14mm	87-88	125-126

- x1** Driver/Left Tyger Fury Step
- x1** Passenger/Right Tyger Fury Step
- x1** Driver/Left Front Mounting Bracket
- x1** Passenger/Right Front Mounting Bracket
- x2** Driver/Left Center/Rear Mounting Brackets

- x2** Passenger/Right Center/Rear Mounting Brackets
- x12** 8-1.25mm x 30mm Hex Bolts
- x12** 8mm x 25mm Combo Bolts
- x12** 8mm Lock Washers
- x12** 8mm x 24mm OD x 2mm Flat Washers

Parts List

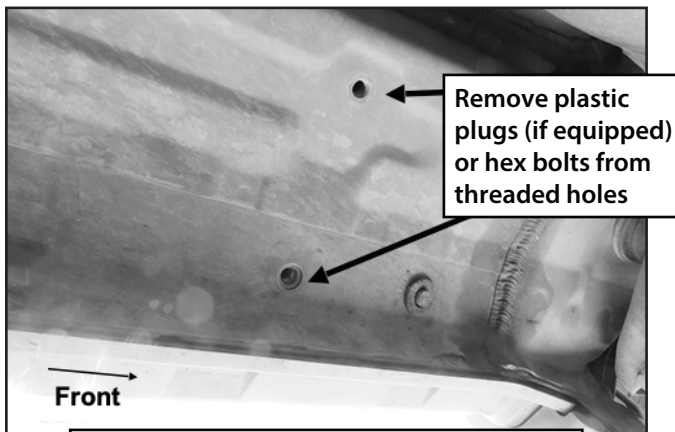


PROCEDURE:

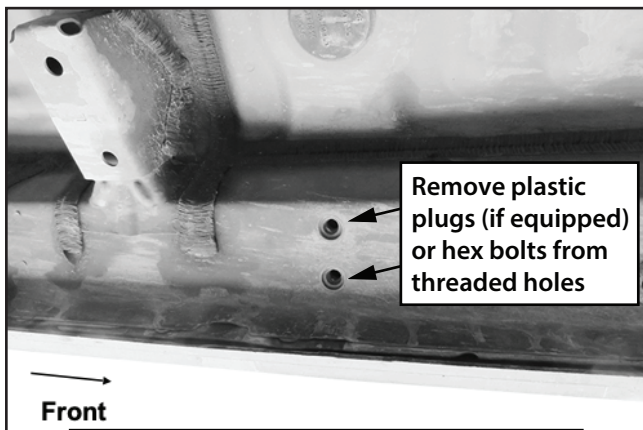
REMOVE CONTENTS FROM BOX. VERIFY ALL PARTS ARE PRESENT. READ INSTRUCTIONS CAREFULLY. ASSISTANCE IS HIGHLY RECOMMENDED.

STEP 1

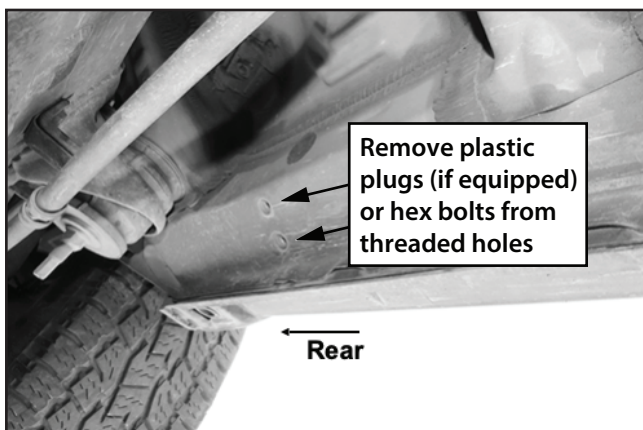
Starting on the Driver/Left side of the vehicle, remove the plastic plugs or hex bolts from the factory mounting locations along the bottom of the body (Figs 1, 2 & 3).

Driver/Left Side Front Installation Pictured


(Fig 1) Driver/Left front mounting location



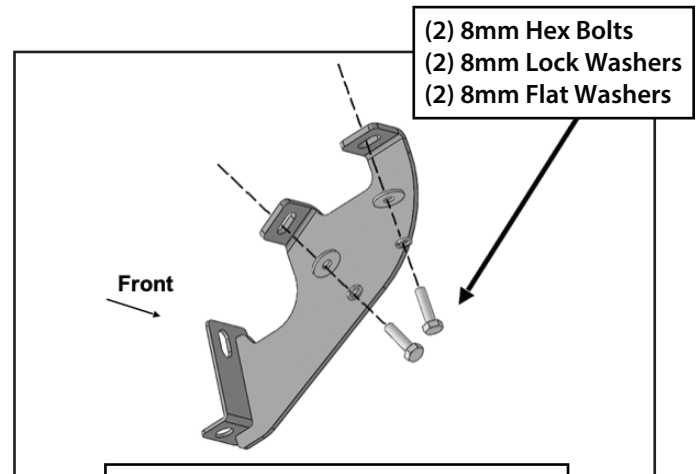
(Fig 2) Driver/Left center mounting location



(Fig 3) Diver/Left rear mounting location

STEP 2

Select the Driver/Left Front Mounting Bracket. Attach the Mounting Bracket to the front mounting location with (2) 8mm Hex Bolts, (2) 8mm Lock Washers and (2) 8mm Flat Washers, (Figures 1, 4 & 5). DO NOT tighten hardware.

Driver/Left Side Front Installation Pictured


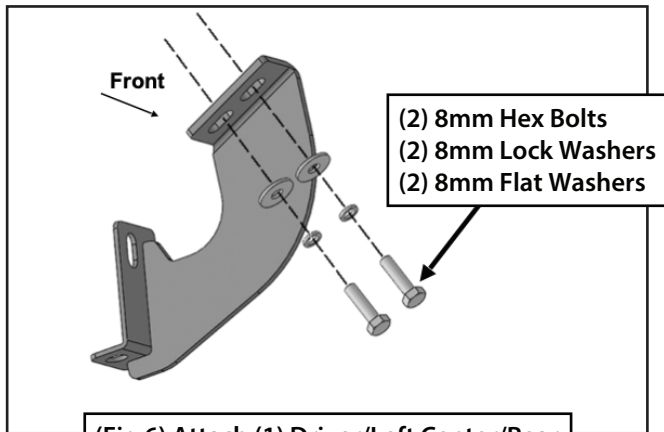
(Fig 4) Attach the Driver/Left Front Mounting Bracket to the front location



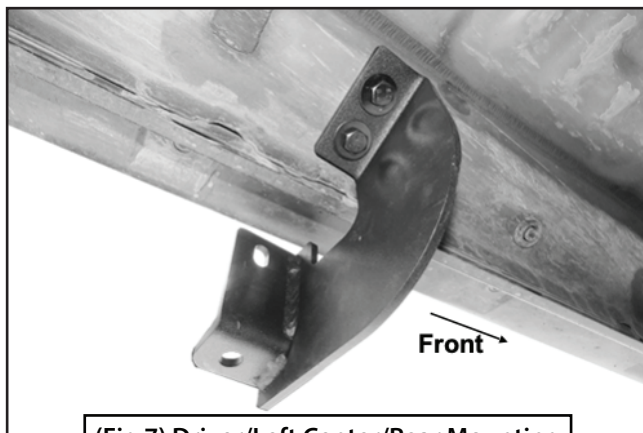
(Fig 5) Driver/Left Front Mounting Bracket attached to the front location

STEP 3

Select (1) Driver/Left Center/Rear Mounting Bracket. Attach the Mounting Bracket to the center location with (2) 8mm Hex Bolts, (2) 8mm Lock Washers and (2) 8mm Flat Washers (Figs 2, 6 & 7). DO NOT tighten hardware.

Driver/Left Side Front Installation Pictured


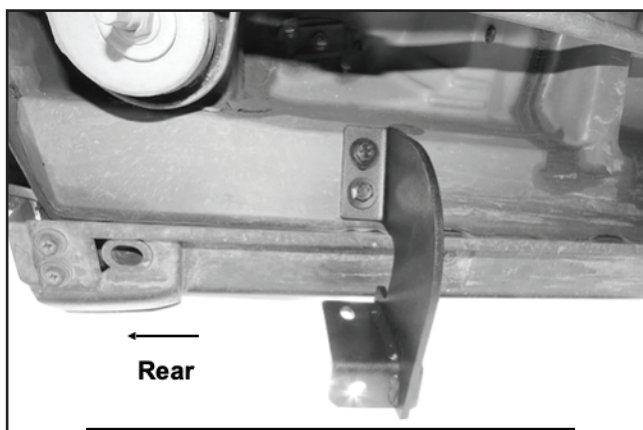
(Fig 6) Attach (1) Driver/Left Center/Rear Mounting Bracket to the center location



(Fig 7) Driver/Left Center/Rear Mounting Bracket attached to the center location

STEP 4

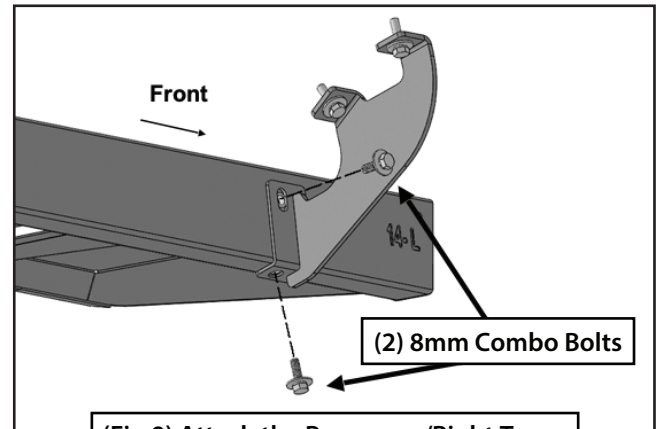
Repeat **STEP 3** to attach the remaining (1) Driver/Left Center/Rear Mounting Bracket to the rear location (Figs 3 & 8). **DO NOT** tighten hardware.

Driver/Left Side Front Installation Pictured


(Fig 8) Driver/Left Center/Rear Mounting Bracket attached to the rear location

STEP 5

Select the Driver/Left Tyger Fury Step. Attach the Step to the Mounting Brackets with (6) 8mm Combo Bolts (Fig 9). **DO NOT** tighten hardware.

Driver/Left Side Front Installation Pictured


(Fig 9) Attach the Passenger/Right Tyger Fury Step to the Mounting Brackets

STEP 6

Level and adjust as necessary and tighten all hardware.

STEP 7

Repeat **STEPS 1-6** to attach the Passenger/Right Tyger Fury Step.

STEP 8

Do periodic inspections to the installation to make sure that all hardware is secure and tight.