



TYGER®

TYGER GUARD™

TG-GD6C60138

BEFORE INSTALLATION

READ INSTRUCTIONS CAREFULLY BEFORE STARTING INSTALLATION. REMOVE CONTENTS FROM BOX AND VERIFY ALL PARTS ARE PRESENT. ASSISTANCE IS RECOMMENDED. FAILURE TO IDENTIFY DAMAGE BEFORE INSTALLATION COULD LEAD TO A REJECTION OF ANY CLAIM. IF ANY DAMAGE FOUND, PLEASE TAKE A PICTURE FOR THE CLAIM PURPOSE. PLEASE ALSO SEND THE PICTURES, ORDER NUMBER, AND DETAILS OF THE ISSUE TO SUPPORT@TYGERAUTO.COM.

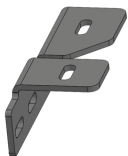
Torque Value

Fastener Size	Class 8.8 Tightening Torque (ft-lbs)	Class 10.9 Tightening Torque (ft-lbs)
6mm	6-7	6-7
8mm	15-16	22-23
10mm	31-32	44-45
12mm	54-55	78-79
14mm	87-88	125-126

NOTE: Cutting may be required. Installation may interfere with bumper mounted parking sensors. Assistance is recommended.

Parts List

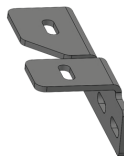
- x1 Tyger Guard
- x1 Driver/left Frame Bracket
- x1 Passenger/right Frame Bracket
- x2 Tube Mounting Brackets
- x2 12-1.75mm x 40mm Hex Bolts
- x4 12mm Lock Washers
- x4 12-1.75mm Nylon Lock Nuts
- x2 12mm Plastic Retainers
- x6 12mm x 37mm OD x 3mm Flat Washers
- x2 12-1.75mm x 40mm Single Bolt Plates
- x8 10mm x 27mm OD x 3mm Flat Washers
- x4 8mm x 22mm OD x 2mm Flat Washers
- x2 6-1.0mm x 20mm Combo Bolts (license plate)
- x4 10mm Nylon Lock Nuts
- x4 10-1.50mm x 35mm Hex Bolts
- x4 8-1.25mm x 35mm Hex Bolts
- x4 8mm Lock Washers
- x1 4mm Wrench



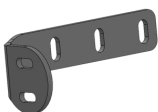
Passenger/right
Frame Bracket



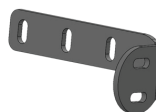
(2) 12mm Bolt
Plates with Plastic
Retainers



Driver/left
Frame Bracket



Passenger/right Tube
Mounting Bracket



Driver/left Tube
Mounting Bracket



TYGER®

NOTE: It may be necessary to remove/relocate front license plate and license plate bracket. It is not required, but strongly recommended. If local/state law requires a front license plate, license plate relocation kit is available.

STEP 1

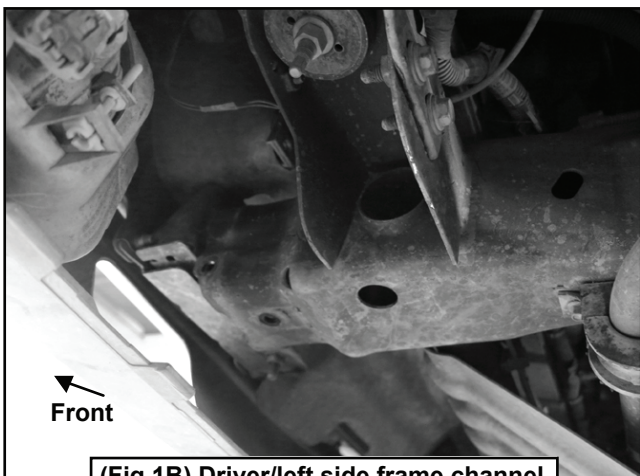
Starting at the driver side, remove the factory tow hook if equipped, (Figs 1A -1B).

NOTE: This Tyger Guard is not compatible with the factory tow hooks and they cannot be reinstalled.

**Remove the factory tow hook and hardware.
Tow hook will not be reinstalled**

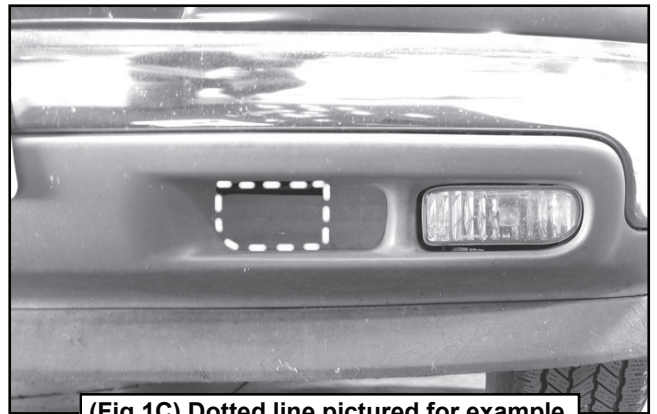


Fig 1A



**(Fig 1B) Driver/left side frame channel
without tow hook pictured from below**

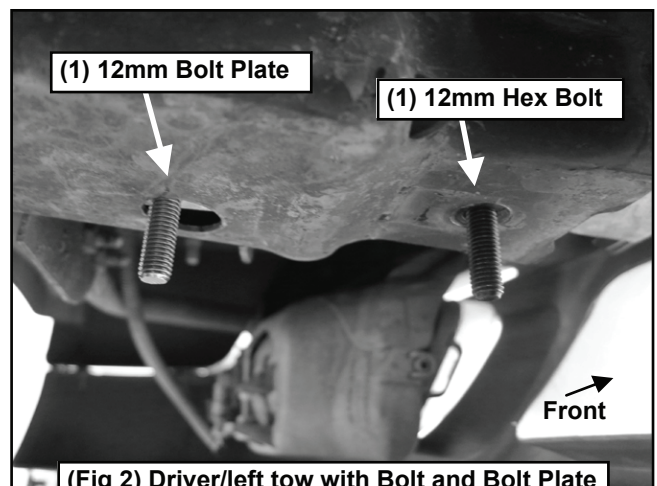
IMPORTANT: On some model years, with and without tow hooks, the pocket in the plastic bumper may need to be trimmed or completely cut out, (Fig 1C). Use a sharp knife or hacksaw blade and carefully cut out the pocket to clear the Frame Brackets. Only cut enough to clear the Brackets.



(Fig 1C) Dotted line pictured for example

STEP 2

Insert (1) 12mm Bolt Plate, into the end of the frame channel, and out through the hole in the bottom of the frame. Insert (1) 12mm Hex Bolt into the factory hole for the tow hook bolt, and out through the hole in the bottom of the frame, (Fig 2).



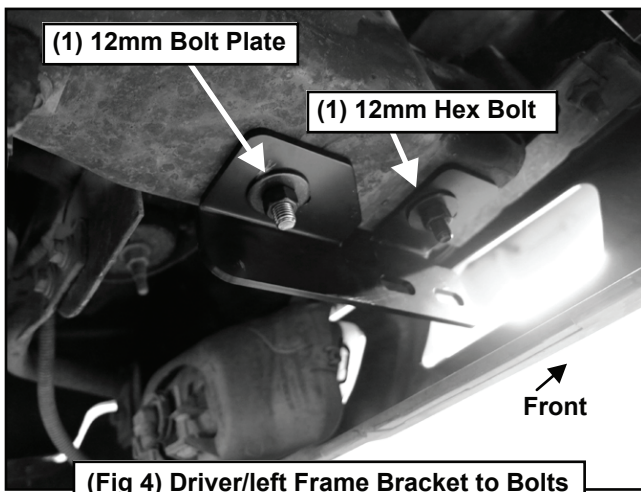
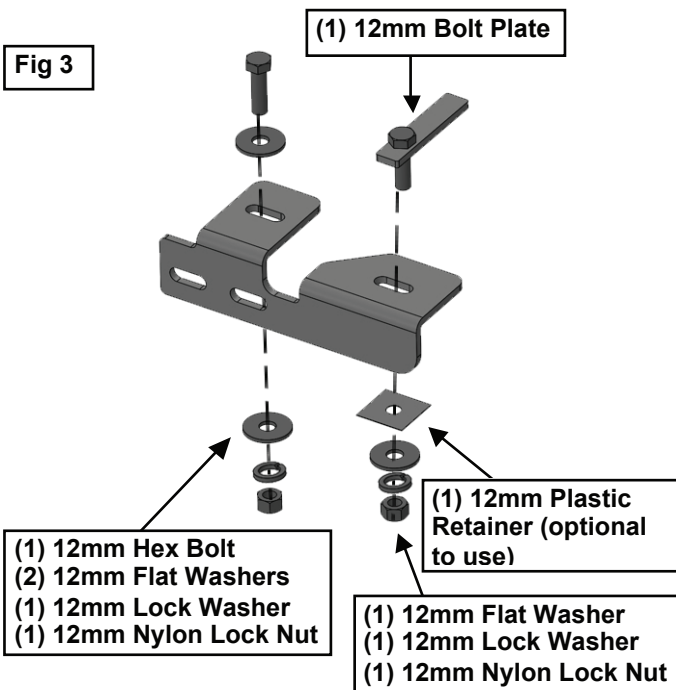
(Fig 2) Driver/left tow with Bolt and Bolt Plate



STEP 3

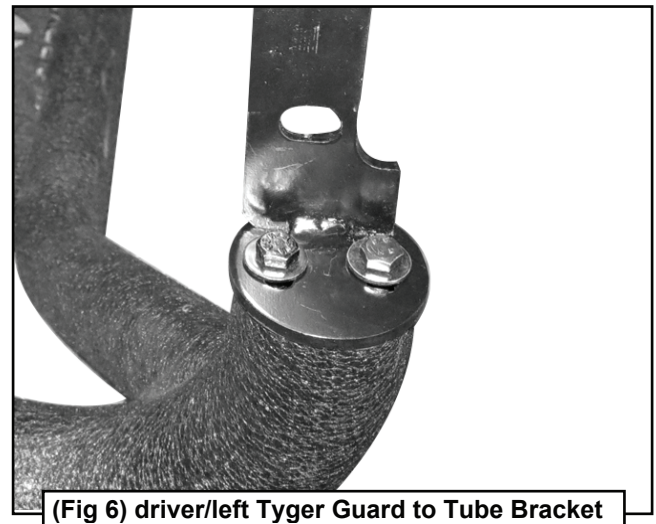
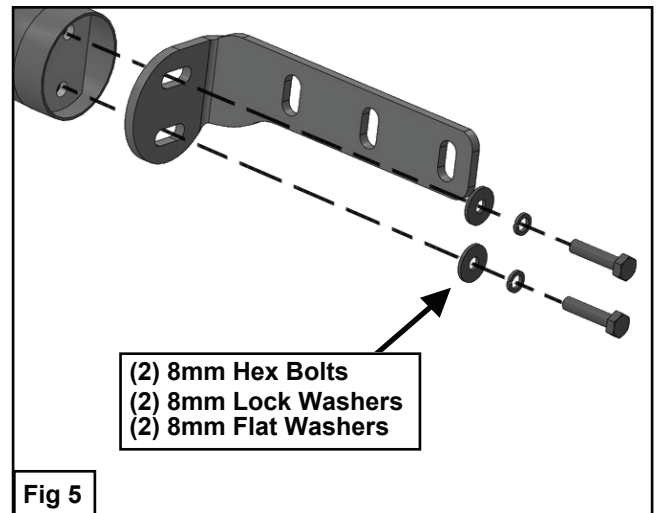
Select the driver side Frame Bracket. Position the Frame Bracket onto the outside of the frame channel and over the Bolt Plate and Hex Bolt. Secure the Bolt Plate with (1) 12mm Flat Washer, (1) 12mm Lock Washer and (1) 12mm Nylon Lock Nut. Secure the Hex Bolt to the frame with (2) 12mm Flat Washers, (1) 12mm Lock Washer and (1) 12mm Nylon Lock Nut, (Figs 3-4). Leave hardware loose at this time.

Fig 3



STEP 4

Carefully unwrap the Tyger Guard. Select (1) Tube Mounting Bracket. Attach the Bracket to the end of the Tyger Guard with (2) 8mm Hex Bolts, (2) 8mm Lock Washers and (2) 8mm Flat Washers, (Figs 5-6). Do not tighten hardware at this time.



STEP 5

Repeat 4 to install the passenger side Tube Mounting Bracket.



TYGER®

STEP 6

With assistance, line up the Tube Mounting Brackets on the Tyger Guard with the outside of the Frame Brackets. Attach the Tyger Guard to the Frame Brackets with the included (4) 10mm Hex Bolts, (8) 10mm Flat Washers and (4) 10mm Nylon Lock Nuts, (Figs 7- 8). Do not tighten hardware.

(2) 10mm Hex Bolts
(4) 10mm Flat Washers
(2) 10mm Nylon Lock Nuts

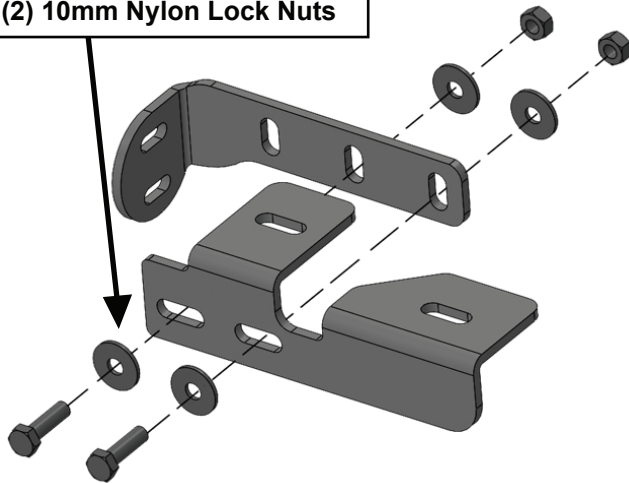


Fig 7

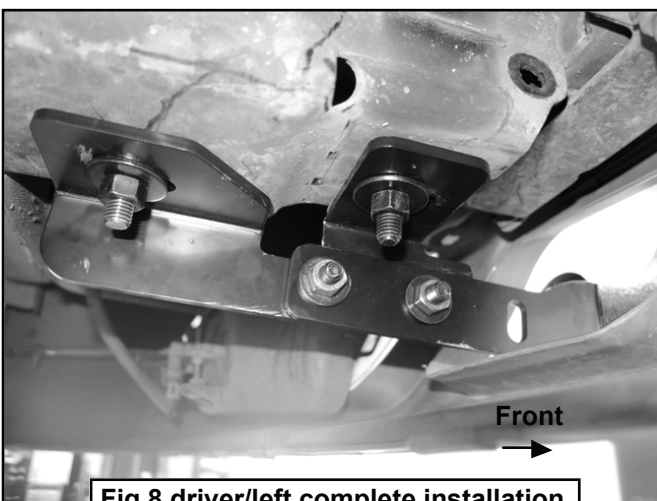


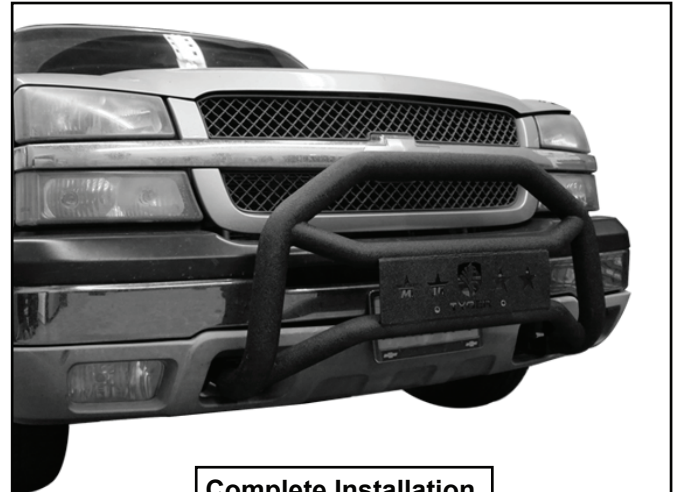
Fig 8 driver/left complete installation

STEP 7

Level and adjust the Tyger Guard properly and tighten all hardware.

STEP 8

Do periodic inspections to the installation to make sure that all hardware is secure and tight.



Complete Installation