



TYGER®

TYGER GUARD™

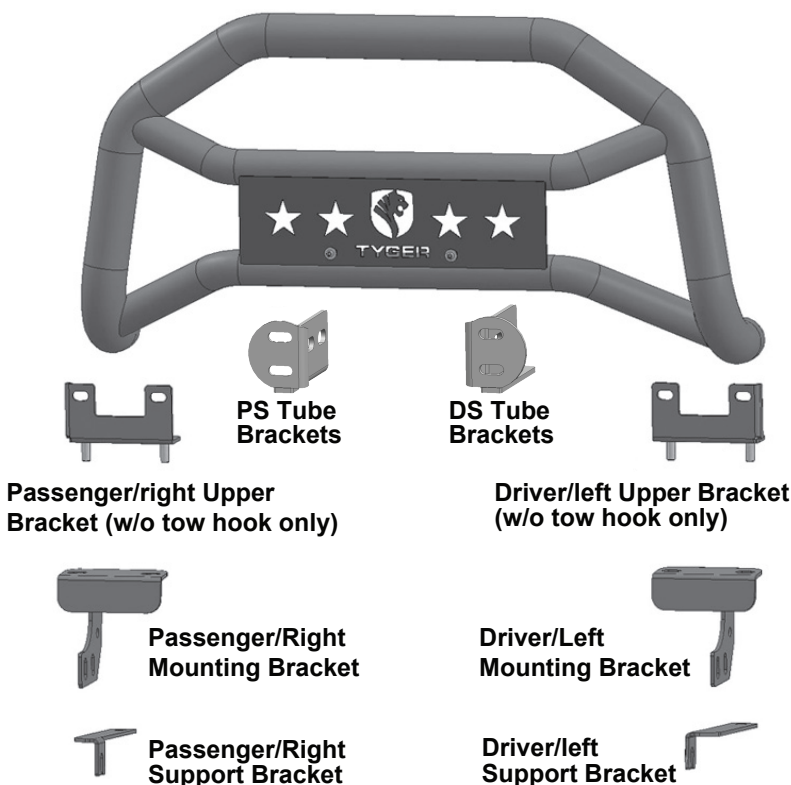
TG-GD6D60068

BEFORE INSTALLATION

READ INSTRUCTIONS CAREFULLY BEFORE STARTING INSTALLATION. REMOVE CONTENTS FROM BOX AND VERIFY ALL PARTS ARE PRESENT. FAILURE TO IDENTIFY DAMAGE BEFORE INSTALLATION COULD LEAD TO A REJECTION OF ANY CLAIM. IF MISSING PARTS OR ANY DAMAGE FOUND, PLEASE TAKE A PICTURE FOR THE CLAIM PURPOSE. TO FILE YOUR CLAIM, PLEASE VISIT: WWW.TYGERAUTO.COM/CONTACT

TORQUE VALUES

Fastener Size	Class 8.8 Torque (ft-lbs)	Class 10.9 Torque (ft-lbs)
6mm	6-7	6-7
8mm	15-16	22-23
10mm	31-32	44-45
12mm	54-55	78-79
14mm	87-88	125-126



Parts List

- x1 Tyger Guard
- x1 DS Tube Brackets (Bull Bar)
- x1 PS Tube Brackets (Bull Bar)
- x1 Driver/Left Upper Frame Bracket (models w/o tow hooks only)
- x1 Passenger/Right Upper Frame Bracket (models w/o tow hooks only)
- x1 Driver/Left Mounting Bracket
- x1 Passenger/Right Mounting Bracket
- x1 Driver/Left Support Bracket
- x1 Passenger/Right Support Bracket
- x2 12-1.5mm x 30mm Special Fine Thread Hex Bolt (for models w/o tow hooks only)
- x6 12-1.75mm x 35mm Hex Bolts
- x18 12mm x 32mm OD x 3mm Flat Washers
- x8 12mm Lock Washers
- x6 12-1.75mm Hex Nuts
- x4 12-1.75mm Nylon Lock Nuts
- x4 8-1.25mm x 35mm Hex Bolts
- x4 8mm x 22mm OD x 2mm Flat Washers
- x4 8mm Lock Washers
- x2 6-1.0mm x 20mm Combo Bolts(for license plate)
- x2 5-.8mm x 15mm Button Head Allen Bolt
- x4 5mm x 10mm OD x 1mm Flat Washers
- x2 5mm Nylon Lock Nuts
- x1 Wrench (6mm screws)
- x1 Wrench (5mm screws)



TYGER®

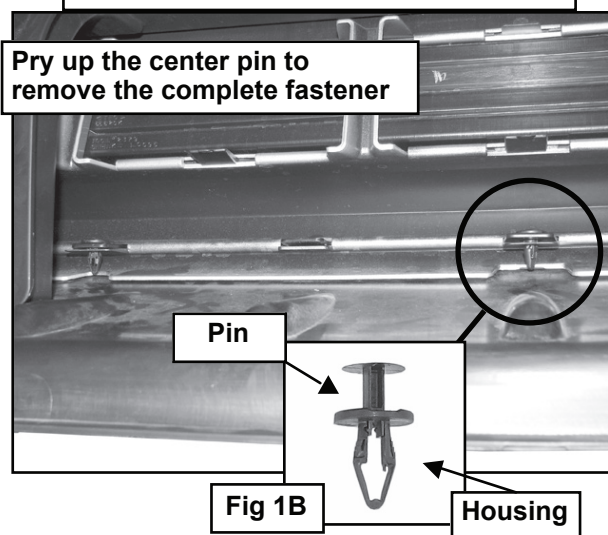
NOTE: REMOVE CONTENTS FROM BOX. VERIFY ALL PARTS ARE PRESENT. READ INSTRUCTIONS CAREFULLY BEFORE STARTING INSTALLATION. CUTTING IS REQUIRED. ASSISTANCE IS RECOMMENDED. INSTALLATION MAY INTERFERE WITH FRONT BUMPER MOUNTED SENSORS. NOT RECOMMENDED FOR VEHICLES WITH "ACTIVE" LASER GUIDED CRUISE CONTROL SYSTEMS.

STEP 1

Start installation under the front bumper and carefully remove the plastic splash guard. **NOTE:** Depending on the model of vehicle, the splash guard may be attached to the bottom of the truck with hex bolts and several two-piece plastic push-in clips, (Fig 1A). Remove all hex bolts then locate the clips behind the bumper cover. Pry up on the center pin of the clip with a small flat blade screwdriver and remove the entire clip, (Fig 1B). Pay close attention to the type and location of all factory hardware for reinstallation.

IMPORTANT: The splash guard may also be attached at the ends of the bumper cover with rivets. Use wire cutters to remove the rivets.

(Fig 1A) Pictured from behind bumper



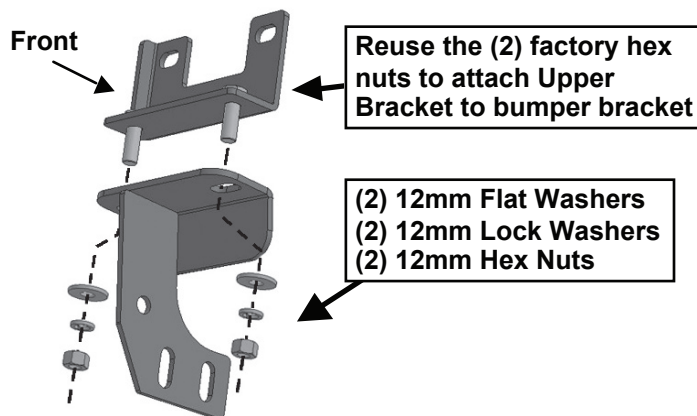
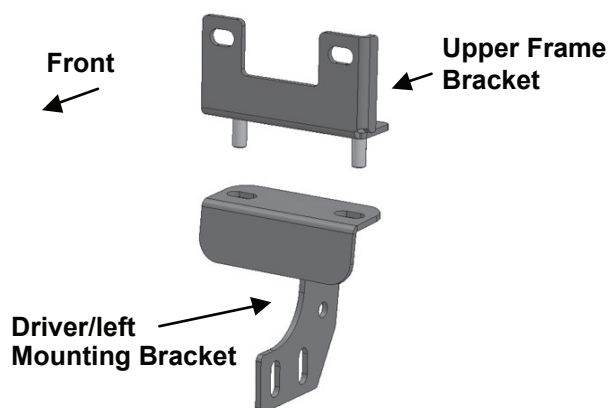
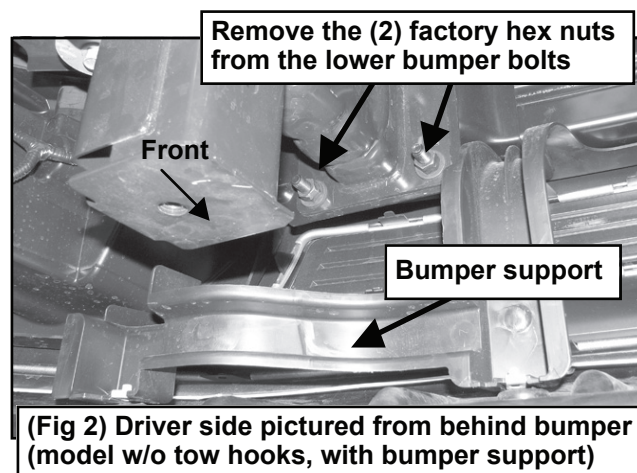
STEP 2

Next, determine if the truck is equipped with tow hooks.

For models without tow hooks:

a. Remove the hex nuts from the two lower bumper bolts, (Fig 2).

b. Select the driver/left Upper Bracket & the driver/left Mounting Bracket, (Fig 3). Bolt the two Brackets together with (2) 12mm Flat Washers, (2) 12mm Lock Washers and (2) 12mm Hex Nuts, (Fig 4). Do not tighten at this time.





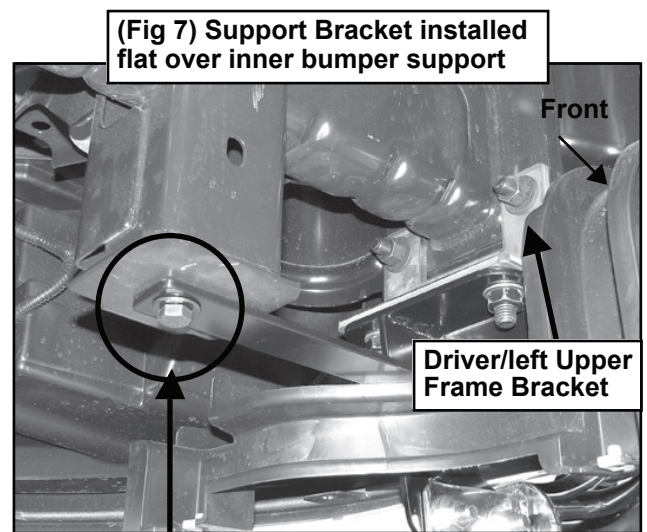
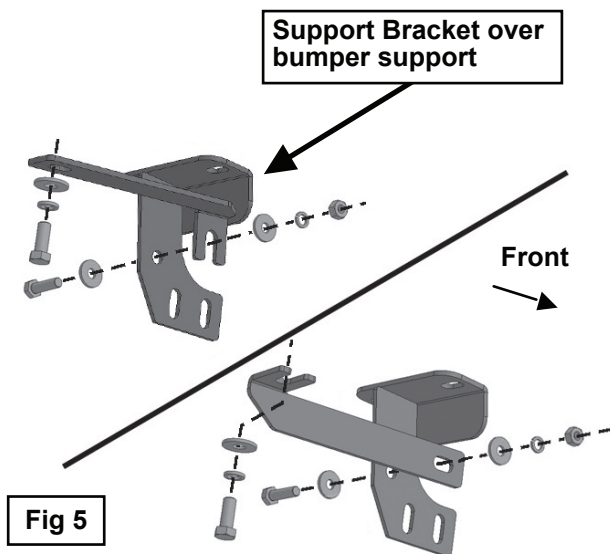
TYGER®

c. Insert the Mounting Bracket assembly up from behind the bumper. Reuse the (2) factory hex nuts to attach the Bracket assembly to the bumper bolts, (Figs 7-8). Do not fully tighten the hardware.

NOTE: On some vehicles, it may be easier to assemble the two-piece bracket on the vehicle. Install the Upper Bracket first, then attach the Mounting Bracket to the bottom as previously described.

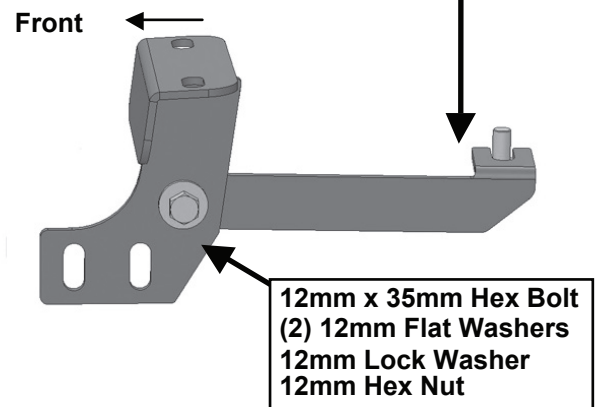
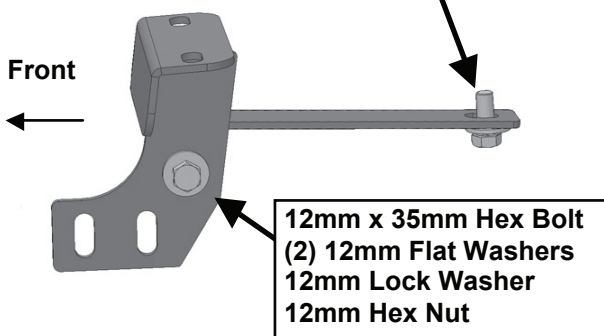
d. Select the driver/left Lower Support Bracket, (Fig 5). Attach the bent end of the Support Bracket to the inside of the top hole in the Mounting Bracket with the included (1) 12mm x 35mm Hex Bolt, (2) 12mm Flat Washers, (1) 12mm Lock Washer and (1) 12mm Hex Nut, (Figs 5-6).

NOTE: On models without tow hooks, Support Bracket can be installed in either direction, (Fig 5).



IMPORTANT: On models without tow hooks, use only the supplied
12-1.5mm x 30mm Fine Thread Hex Bolt
12mm Lock Washer
12mm Flat Washer

IMPORTANT: On models without tow hooks, use only the supplied
12-1.5mm x 30mm Fine Thread Hex Bolt
12mm Lock Washer
12mm Flat Washer



(Fig 6) Driver side Support Bracket in "no tow hook-with bumper support" position

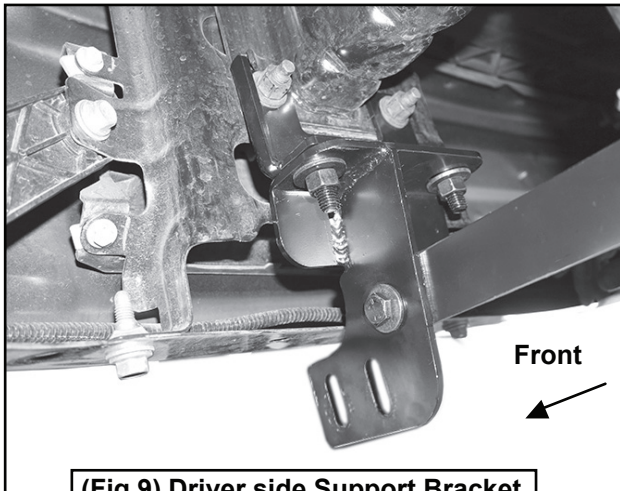
(Fig 8) Driver side Support Bracket "all models w/o bumper support" position



TYGER®

e. Attach the inner end of the Support Bracket to the bottom of the frame with (1) 12-1.5mm x 30mm Special Fine Thread Hex Bolt, (1) 12mm Lock Washer and (1) 12mm Flat Washer, (Figs 5-9).

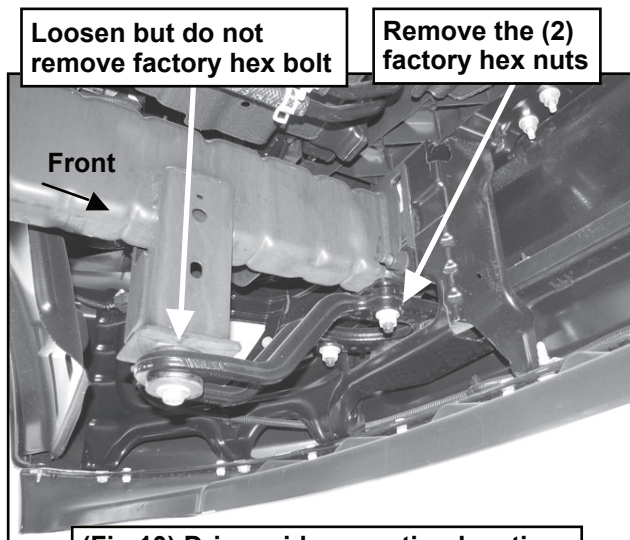
IMPORTANT: The hole in the bottom of the frame is **fine thread**. Only use the 12-1.5mm x 30mm Fine Thread Hex Bolt provided in the hardware kit. Do not tighten all hardware at this time.



(Fig 9) Driver side Support Bracket in "w/o bumper support" position

For models with tow hooks:

a. Remove the (2) hex nuts attaching the front of the tow hook to the bottom of the bumper bracket, (Fig 10). Leave the rear hex bolt tight for the moment.

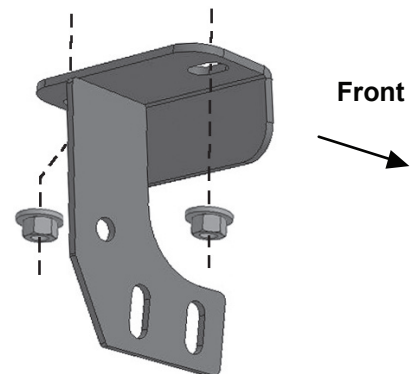


(Fig 10) Driver side mounting location on model equipped with tow hooks

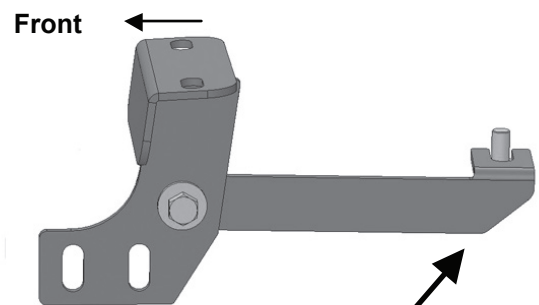
b. Select the driver side Mounting Bracket, (Fig 11). Attach the Mounting Bracket to the (2) tow hook mounting studs with the (2) factory hex nuts. Do not tighten hardware at this time.

c. Loosen the rear tow hook bolt, (Fig 10). Slide the inner bent end of the driver side Support Bracket between the bolt and the tow hook or replace with the included (1) 12-1.5mm x 30mm Special Fine Thread Hex Bolt, (1) 12mm Lock Washer and (1) 12mm Flat Washer, (Fig 12). Do not tighten hardware at this time.

d. Line up the flat forward end of the Support Bracket with the inside of the Mounting Bracket. Attach the Support Bracket to the top hole in the Mounting Bracket with the included (1) 12mm x 35mm Hex Bolt, (2) 12mm Flat Washers, (1) 12mm Lock Washer and (1) 12mm Hex Nut, (Fig 12).



(Fig 11) Reuse factory hex nuts to attach driver/left Frame Bracket to bottom of tow hook



(Fig 12) Slide bent end of Support Bracket under head of factory hex bolt attaching tow hook to frame (Fig 8).

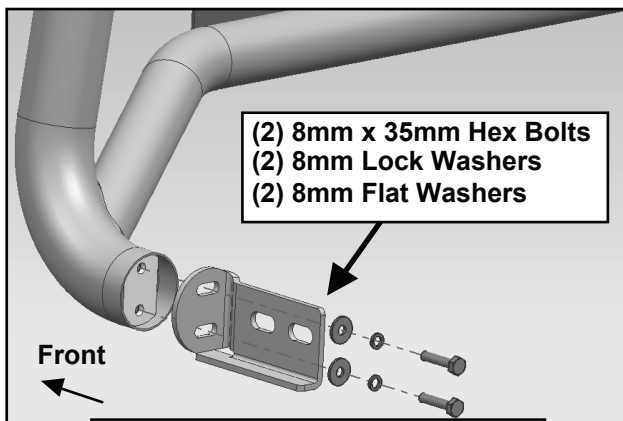
STEP 3

Repeat the appropriate Step 2 for the passenger/right side Mounting Bracket installation.



STEP 4

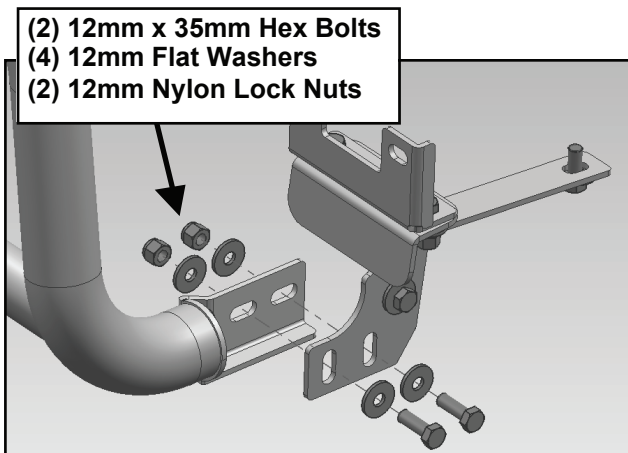
Next, select (1) DS Tube Mounting Bracket, (Fig 13). Attach the Bracket to the end of the Tyger Guard with (2) 8mm x 35mm Hex Bolts, (2) 8mm Lock Washers and (2) 8mm Flat Washers. Leave hardware loose at this time. Repeat this Step to install the passenger side Tube Bracket.



(Fig 13) DS Bull Bar Tube Bracket

STEP 5

With help, position the Tyger Guard with Tube Brackets up to the inside of the Mounting Brackets. Use the included (4) 12-1.75mm x 35mm Hex Bolts, (8) 12mm Flat Washers and (4) 12mm Nylon Lock Nuts to attach the Tube Brackets to the Mounting Brackets, (Fig 14). Do not tighten hardware.



(Fig 14) Driver/left Bull Bar to Mounting Bracket

STEP 6

Stand back from the vehicle and check to see that the Tyger Guard is centered and level on the vehicle and adjust as necessary. Fully tighten first the hardware securing the Mounting Brackets to the vehicle. Next tighten only the (4) 8mm Hex Bolts securing the Tube Brackets to the Tyger Guard as described in Step 4. Do not tighten the 12mm hardware attaching the Tube Brackets to the Mounting Brackets. Temporarily remove the Tyger Guard with Tube Brackets attached.

STEP 7

Hold the splash guard up to the bumper cover and align it with the mounting points, (Fig 15). Mark the location of the Mounting Brackets onto the back of the splash guard. Cut an approximately 1" wide by 4" long slot in the splash guard, (Fig 16).

NOTE: The size of the slot is an estimate only and may vary due to different factory designs for the splash guards and front bumper covers. Also, additional cutting may be required to clear the Support Bracket on vehicles equipped with tow hooks.

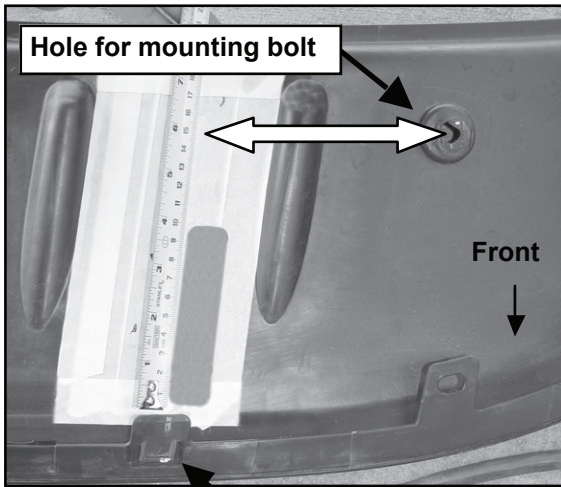
IMPORTANT: To avoid weakening the splash guard, do not cut the slot any larger than necessary. Do not cut through the front or back edges of the cover, (Fig 16). Make several small cuts first and check the fit often for a clean installation.



(Fig 15) Hold the splash guard up to the bottom of the brackets and mark location for cutting to clear brackets. Cut only what is needed to insert bracket through the splash guard.



TYGER[®]

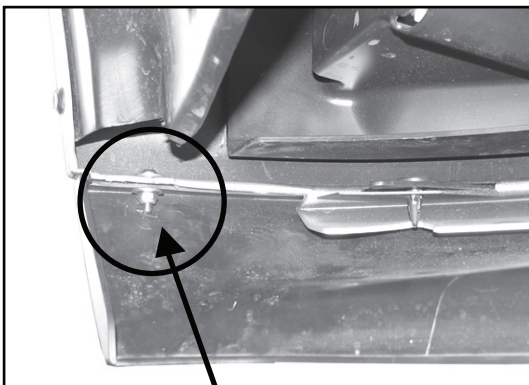


(Fig 16) Do not cut through the front edge of the splash guard

Measure the distance from the mounting point for the splash guard to the bracket on the driver and passenger side. Use this measurement as a reference point to check location before cutting the 1" wide x 4" long slot

STEP 8

Reinstall the splash guard using the factory hardware. Use the included (2) 5mm x 15mm Allen Bolts, (4) 5mm Flat Washers and (2) 5mm Lock Nuts at the ends of the splash guard if required to replace rivets, (Fig 17).



**(Fig 17) If required, replace the rivet at the corner of the splash guard with the supplied:
5mm x 15mm Button Head Allen Bolt
(2) 5mm Flat Washers
5mm Nylon Lock Nut**

STEP 9

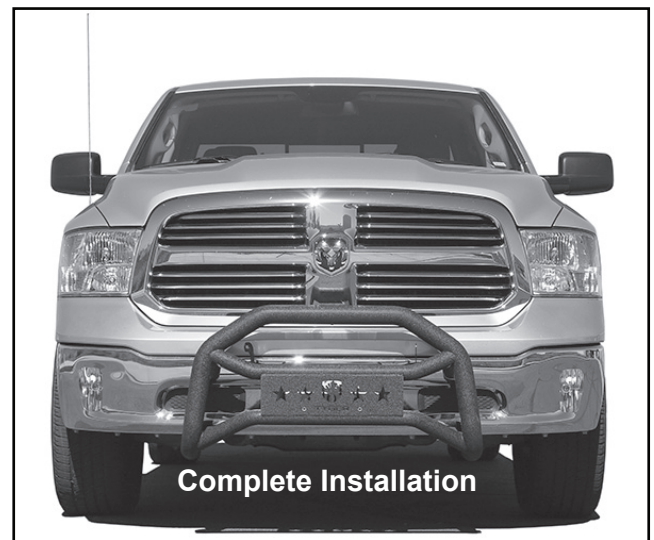
Reinstall the Tyger Guard as described in Step 5, (Fig 14).

STEP 10

Level and adjust the Tyger Guard and tighten all hardware.

STEP 11

Do periodic inspections to the installation to make sure that all hardware is secure and tight.



Installation pictured without the splash guard for instruction purposes only