



TYGER®

TYGER GUARD™

BEFORE INSTALLATION

READ INSTRUCTIONS CAREFULLY BEFORE STARTING INSTALLATION. REMOVE CONTENTS FROM BOX AND VERIFY ALL PARTS ARE PRESENT. FAILURE TO IDENTIFY DAMAGE BEFORE INSTALLATION COULD LEAD TO A REJECTION OF ANY CLAIM. IF MISSING PARTS OR ANY DAMAGE FOUND, PLEASE TAKE A PICTURE FOR THE CLAIM PURPOSE. TO FILE YOUR CLAIM, PLEASE VISIT: WWW.TYGERAUTO.COM/CONTACT

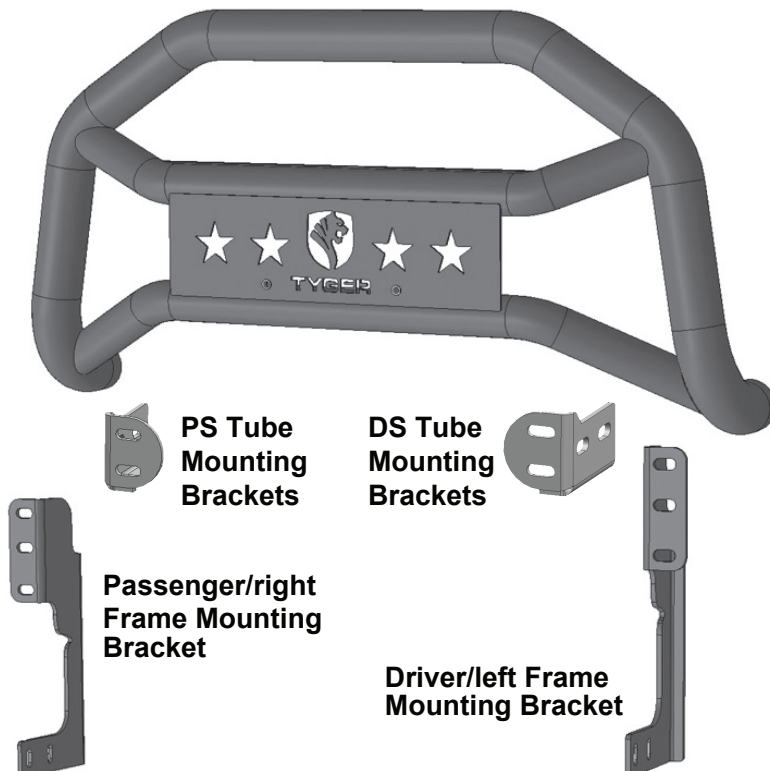
TORQUE VALUES

Fastener Size	Class 8.8 Torque (ft-lbs)	Class 10.9 Torque (ft-lbs)
6mm	6-7	6-7
8mm	15-16	22-23
10mm	31-32	44-45
12mm	54-55	78-79
14mm	87-88	125-126

TG-GD6D60188

Parts List

- x1 Tyger Guard
- x1 DS Tube Mounting Brackets
- x1 PS Tube Mounting Brackets
- x1 Driver/Left Frame Mounting Bracket
- x1 Passenger/Right Frame Mounting Bracket
- x4 10-1.5mm x 35mm Hex Bolts
- x8 10mm x 27mm OD x 3mm Flat Washers
- x4 10-1.5mm Nylon Lock Nuts
- x4 8-1.25mm x 35mm Hex Bolts
- x4 8mm x 24mm OD x 2mm Flat Washers
- x4 8mm Lock Washers
- x2 6-1.0mm x 20mm Combo Bolts (license plate)
- x1 4mm Wrench





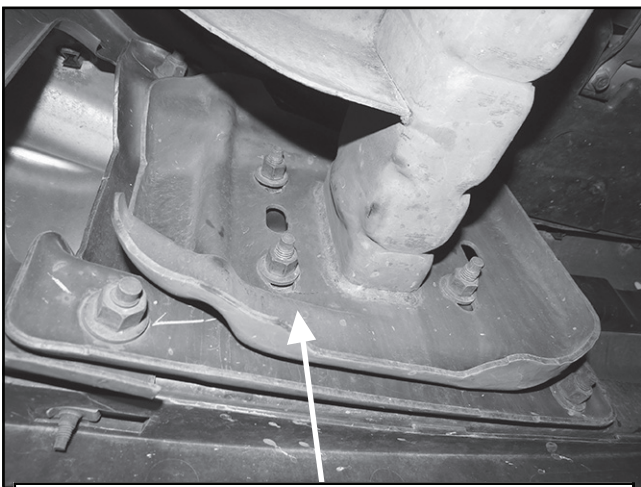
TYGER®

STEP 1

REMOVE CONTENTS FROM BOX. VERIFY ALL PARTS ARE PRESENT. READ INSTRUCTIONS CAREFULLY BEFORE STARTING INSTALLATION. ASSISTANCE IS RECOMMENDED.

STEP 2

Begin the installation at the underside of the front bumper, (Fig 1). Starting on the driver side, remove the (2) factory hex nuts from the bumper bolts securing the bumper bracket to the back of the bumper. Select the Driver Side Frame Mounting Bracket and hold it up behind the bumper. Align the holes in the Frame Mounting Bracket with the (2) bumper bolts. Attach the Bracket to the bumper bolts using the factory hex nuts, (Fig 2). Snug but do not tighten the hardware.



(Fig 1) Driver side mounting location pictured

Remove the (2) factory hex nuts from behind the bumper. Reuse the hex nuts to attach the driver side Frame Mounting Bracket to the back of the bumper bracket.

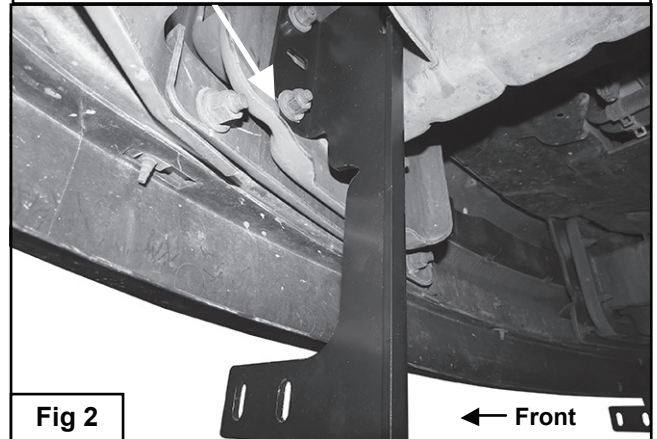


Fig 2

STEP 3

Repeat Step 2 for the Passenger Side Mounting Bracket installation.

STEP 4

Select (1) DS Tube Mounting Bracket. Attach the DS Tube Bracket to the end of the Tyger Guard with (2) 8-1.25mm Hex Bolts, (2) 8mm Lock Washers and (2) 8mm Flat Washers, (Fig 3-4). Center Bracket on end of tube but do not fully tighten at this time. Repeat this Step to attach the passenger side Tube Bracket.

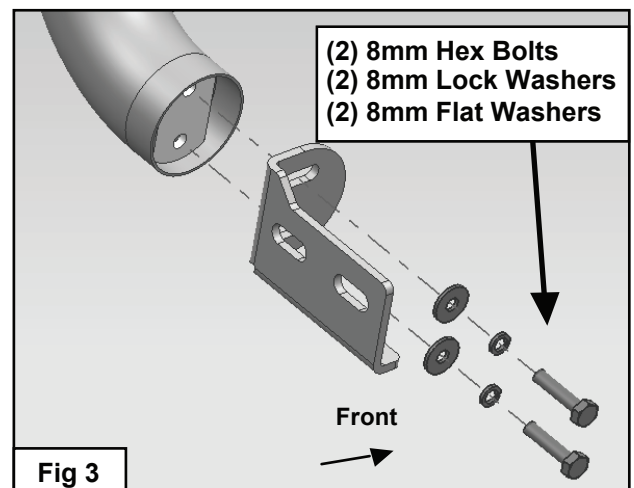
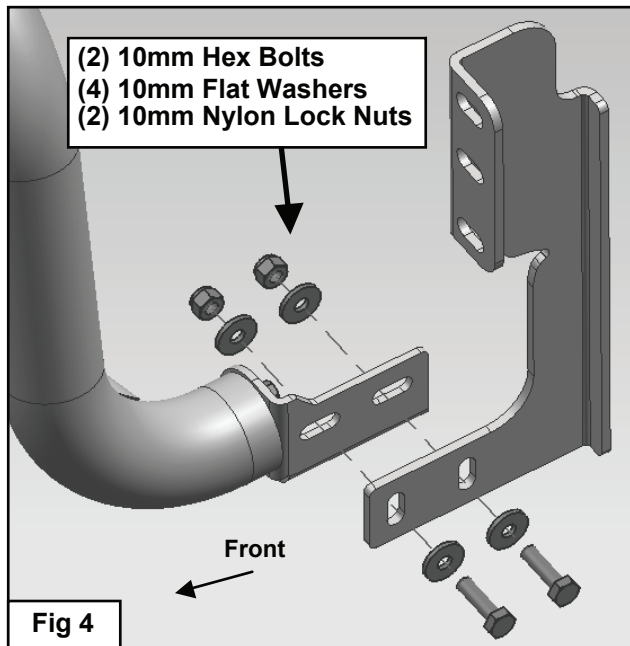


Fig 3

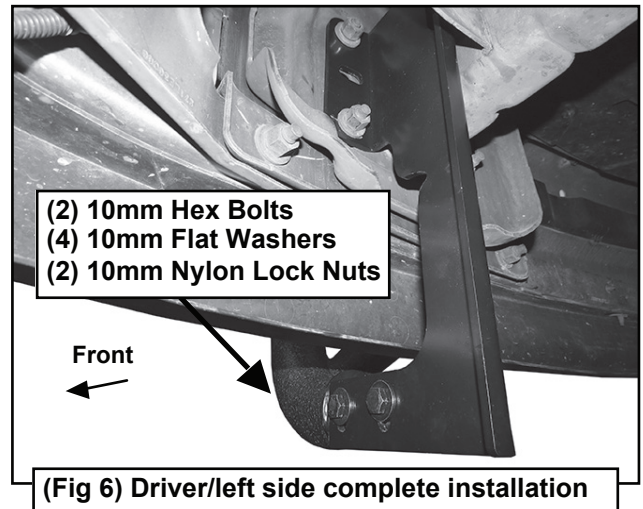
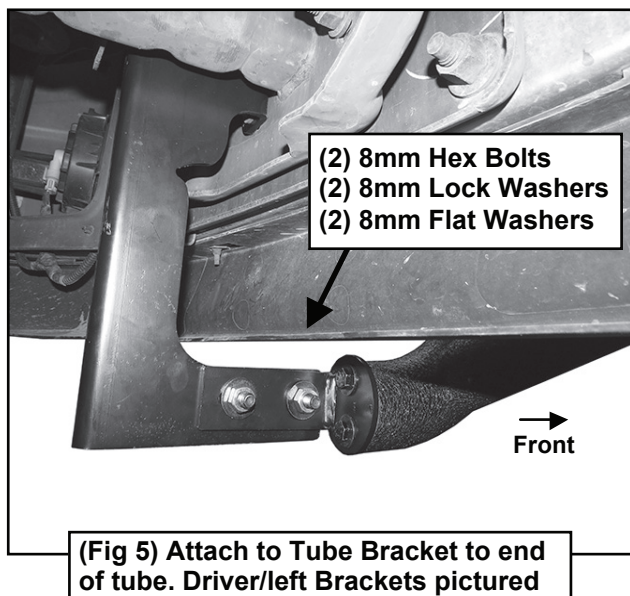


TYGER[®]



STEP 5

With help, position the Tyger Guard with Tube Brackets up to the inside of the Mounting Brackets. Use the included (4) 10-1.5mm Hex Bolts, (8) 10mm Flat Washers and the (4) 10-1.5mm Nylon Lock Nuts to attach the Tube Brackets to the Mounting Brackets, (Fig 5-6). Do not tighten hardware at this time.



STEP 6

Stand back from the vehicle and check to see that the Tyger Guard is centered and level on the vehicle. Tighten the Mounting Bracket hardware first, then tighten the (4) 8mm Hex Bolts securing the Tube Brackets to the Tyger Guard as described in Step 4.

STEP 7

Do periodic inspections of the installation to make sure that all hardware is secure and tight.

Complete Installation

