



TYGER GUARD™

TG-GD6T60448

BEFORE INSTALLATION

READ INSTRUCTIONS CAREFULLY BEFORE STARTING INSTALLATION. REMOVE CONTENTS FROM BOX AND VERIFY ALL PARTS ARE PRESENT. FAILURE TO IDENTIFY DAMAGE BEFORE INSTALLATION COULD LEAD TO A REJECTION OF ANY CLAIM. IF MISSING PARTS OR ANY DAMAGE FOUND, PLEASE TAKE A PICTURE FOR THE CLAIM PURPOSE. TO FILE YOUR CLAIM, PLEASE VISIT:

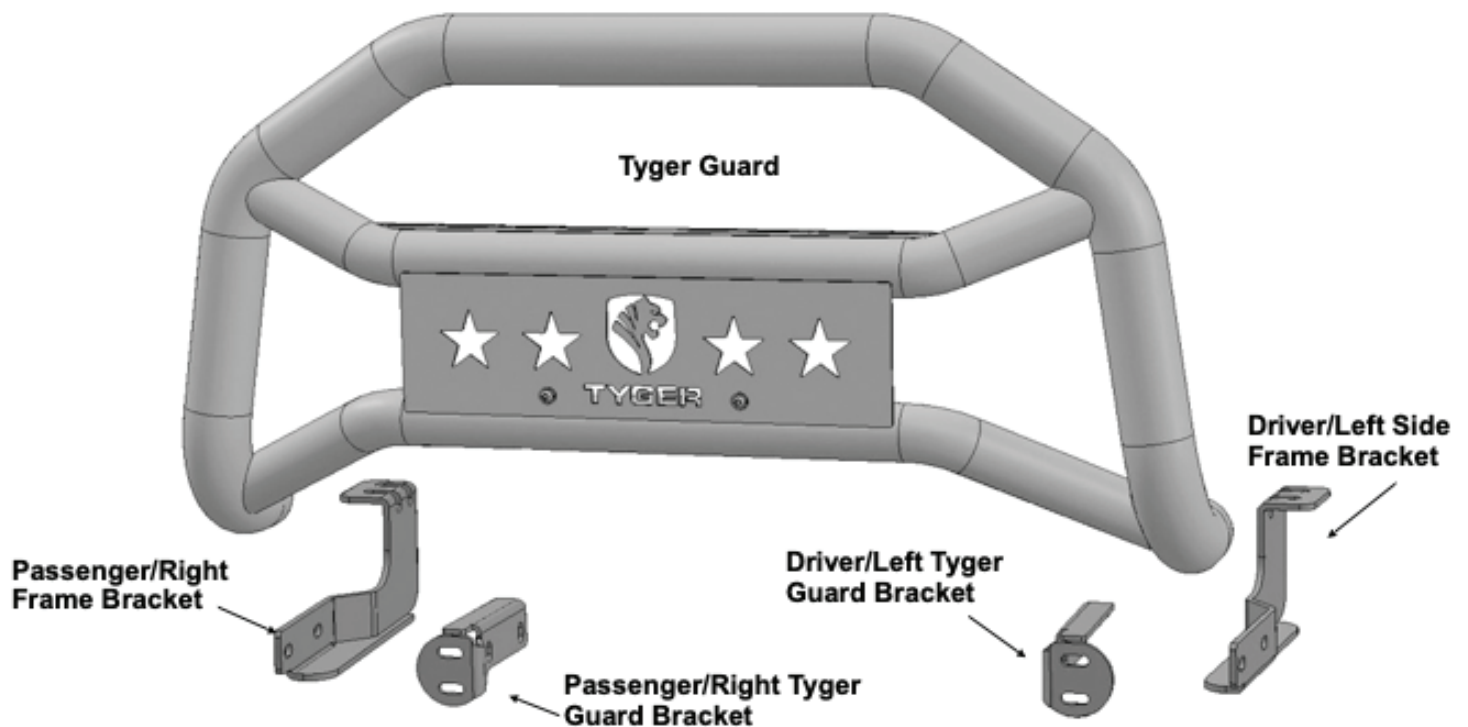
WWW.TYGERAUTO.COM/CONTACT

TORQUE VALUES

Fastener Size	Class 8.8 Torque (ft-lbs)	Class 10.9 Torque (ft-lbs)
6mm	6-7	6-7
8mm	15-16	22-23
10mm	31-32	44-45
12mm	54-55	78-79
14mm	87-88	125-126

- x1** Tyger Guard
- x1** Driver/Left Side Frame Bracket
- x1** Passenger/Right Side Frame Bracket
- x1** Driver/Left Side Tyger Guard Bracket
- x1** Passenger/Right Side Tyger Guard Bracket
- x4** 12-1.25mm x 30mm **Fine Thread** Hex Bolts
- x4** 12mm Lock Washers
- x4** 12mm x 24mm x 2.5mm Flat Washers
- x4** 10-1.50mm x 35mm Hex Bolts
- x8** 10mm x 27mm x 2.5mm Flat Washers
- x4** 10-1.5mm Nylon Lock Nuts
- x4** 8-1.25mm x 35mm Hex Bolts
- x4** 8mm Lock Washers
- x4** 8mm x 22mm x 2mm Flat Washers
- x1** 4mm Wrench
- x2** 6-1.0mm x 20mm Allen Combo Bolts

Parts List



PROCEDURE:

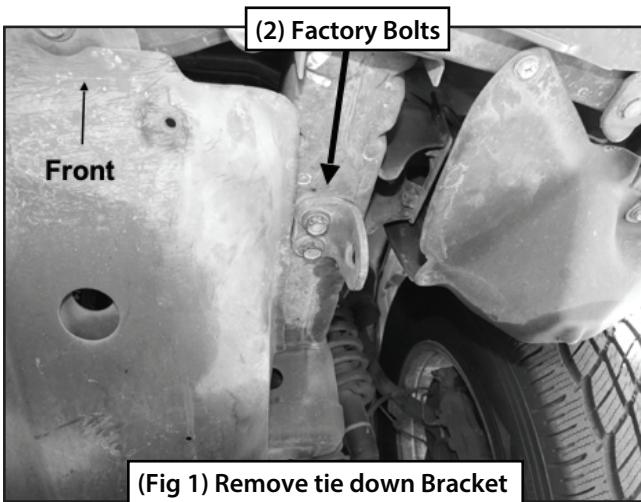
REMOVE CONTENTS FROM BOX. VERIFY ALL PARTS ARE PRESENT. READ INSTRUCTIONS CAREFULLY BEFORE STARTING INSTALLATION. ASSISTANCE RECOMMENDED.

STEP 1

Remove front license plate.

STEP 2

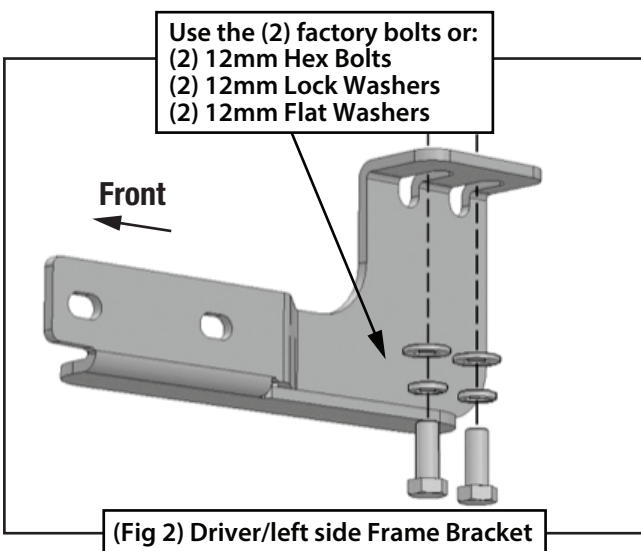
Starting on the driver/left side of the vehicle. Remove the factory bolts and tie down bracket, if equipped, from the bottom of the driver/left side frame channel (Fig 1).



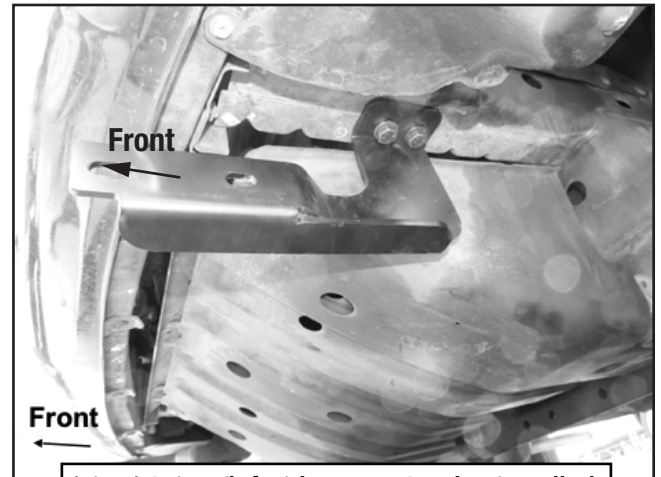
(Fig 1) Remove tie down Bracket

STEP 3

Select the driver/left side Frame Bracket (Fig 2). Reuse the (2) factory hex bolts or use the provided (2) 12mm x 30mm Fine Thread Hex Bolts, (2) 12mm Lock Washers and (2) 12mm Flat Washers to attach the Bracket to the bottom of the frame channel (Fig 3). DO NOT tighten hardware at this time.



(Fig 2) Driver/left side Frame Bracket



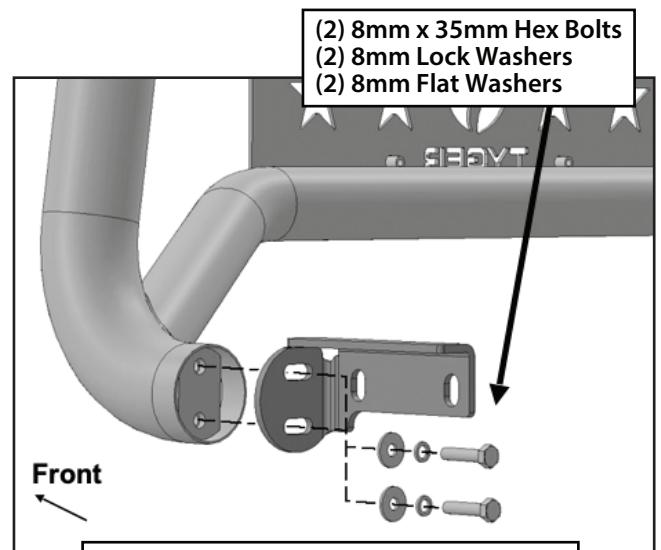
(Fig 3) Driver/left side Frame Bracket installed

STEP 4

Repeat **STEPS 2 & 3** for passenger/right side Frame Bracket installation.

STEP 5

Select the driver/left Tyger Guard Bracket (Fig 4). Attach the Bracket to the end of the tube on the driver/left side of the Tyger Guard with (2) 8mm x 35mm Hex Bolts, (2) 8mm Lock Washers and (2) 8mm Flat Washers (Figs 4 & 5). DO NOT tighten hardware.



(Fig 4) Attach driver/left side Tyger Guard Mounting Bracket to Tyger Guard



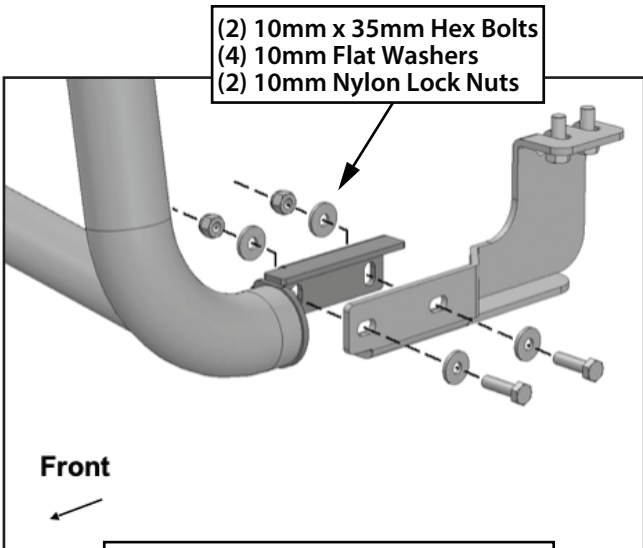
(Fig 5) Driver/left side complete installation

STEP 6

Repeat **STEP 5** to attach the passenger/right side Tyger Guard Bracket.

STEP 7

With assistance, position the Tyger Guard with attached Brackets up against the inside of the Frame Brackets. Attach the Tyger Guard to the Frame Brackets with the included (4) 10mm x 35mm Hex Bolts, (8) 10mm Flat Washers and (4) 10mm Nylon Lock Nuts (Figs 5 & 6).



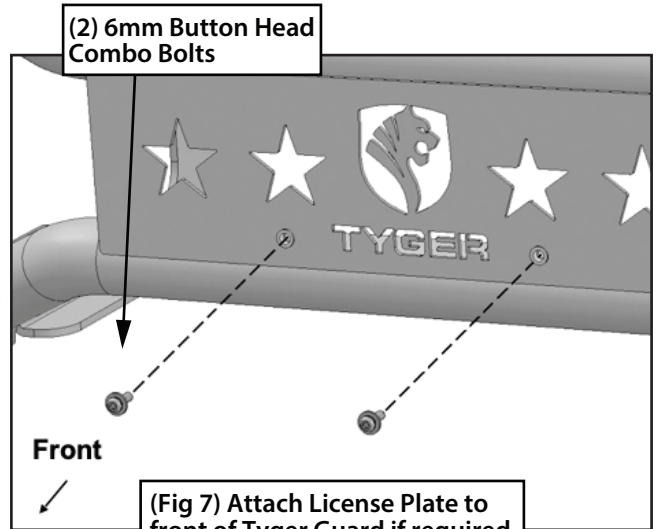
(Fig 6) Attach driver/left side of Tyger Guard to inside of Frame Bracket

STEP 8

Level and adjust the Tyger Guard properly and tighten all hardware at this time.

STEP 9

Attach the license plate, (if required), to the threaded holes in the front of the Tyger Guard with the included (2) 6mm x 20mm Button Head Combo Bolts (Fig 7).



(Fig 7) Attach License Plate to front of Tyger Guard if required

STEP 10

Do periodic inspections to the installation to make sure that all hardware is secure and tight.



Complete Installation