



# TYGER®

## TYGER KOBRA

TG-KB2C25001

Scan to Download the  
Latest Digital Version



### BEFORE INSTALLATION

READ INSTRUCTIONS CAREFULLY BEFORE STARTING INSTALLATION. REMOVE CONTENTS FROM BOX AND VERIFY ALL PARTS ARE PRESENT. FAILURE TO IDENTIFY DAMAGE BEFORE INSTALLATION COULD LEAD TO A REJECTION OF ANY CLAIM. IF MISSING PARTS OR ANY DAMAGE FOUND, PLEASE TAKE A PICTURE FOR THE CLAIM PURPOSE. TO FILE YOUR CLAIM, PLEASE VISIT: [WWW.TYGERAUTO.COM/CONTACT](http://WWW.TYGERAUTO.COM/CONTACT)

### TORQUE VALUES

| Fastener Size | Class 8.8 Torque (ft-lbs) | Class 10.9 Torque (ft-lbs) |
|---------------|---------------------------|----------------------------|
| 6mm           | 6-7                       | 6-7                        |
| 8mm           | 15-16                     | 22-23                      |
| 10mm          | 31-32                     | 44-45                      |
| 12mm          | 54-55                     | 78-79                      |
| 14mm          | 87-88                     | 125-126                    |

- x1** Driver/Left Tyger Kobra
- x1** Passenger/Right Tyger Kobra
- x6** Mounting Brackets [A]
- x1** Driver/Left Rear Mounting Bracket [B]
- x1** Passenger/Right Rear Mounting Bracket [C]
- x16** 8mm x 24mm x 2mm Flat Washers
- x16** 8-1.25mm x 25mm Combination Bolts
- x16** 8-1.25mm x 30mm Hex Bolts
- x16** 8mm Lock Washers

### Parts List

### Top View

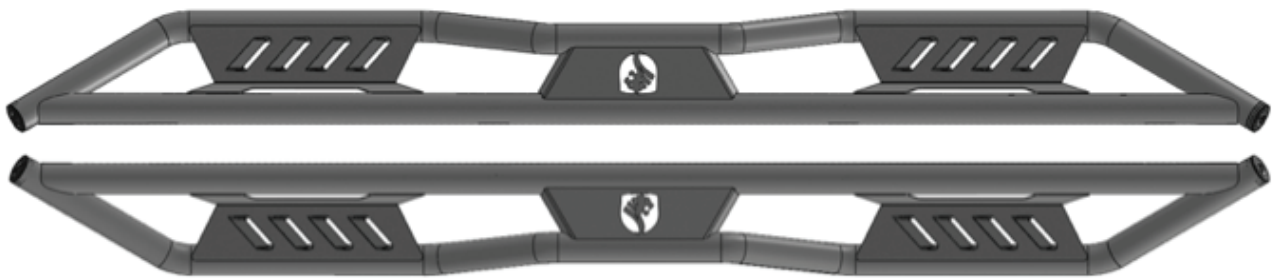
**ATTENTION:** Refer to **D** and **P** labelling on the side of the tubes to determine Driver and Passenger TYGER Kobra



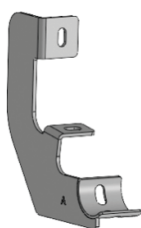
Front



**P** Passenger Side TYGER Kobra



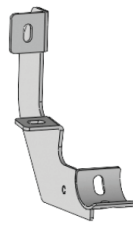
**D** Driver Side TYGER Kobra



**x6**  
**[A]**  
Mounting Brackets



**x1**  
**[B]**  
Driver/Left Side  
Rear Mounting Bracket



**x1**  
**[C]**  
Passenger/Right Side  
Rear Mounting Bracket



Hex Bolt

**x16** 8mm x 1.25mm x 30mm Hex Bolts



Flat Washer

**x16** 8mm x 24mm x 2mm Flat Washers



Lock Washers

**x16** 8mm Lock Washers



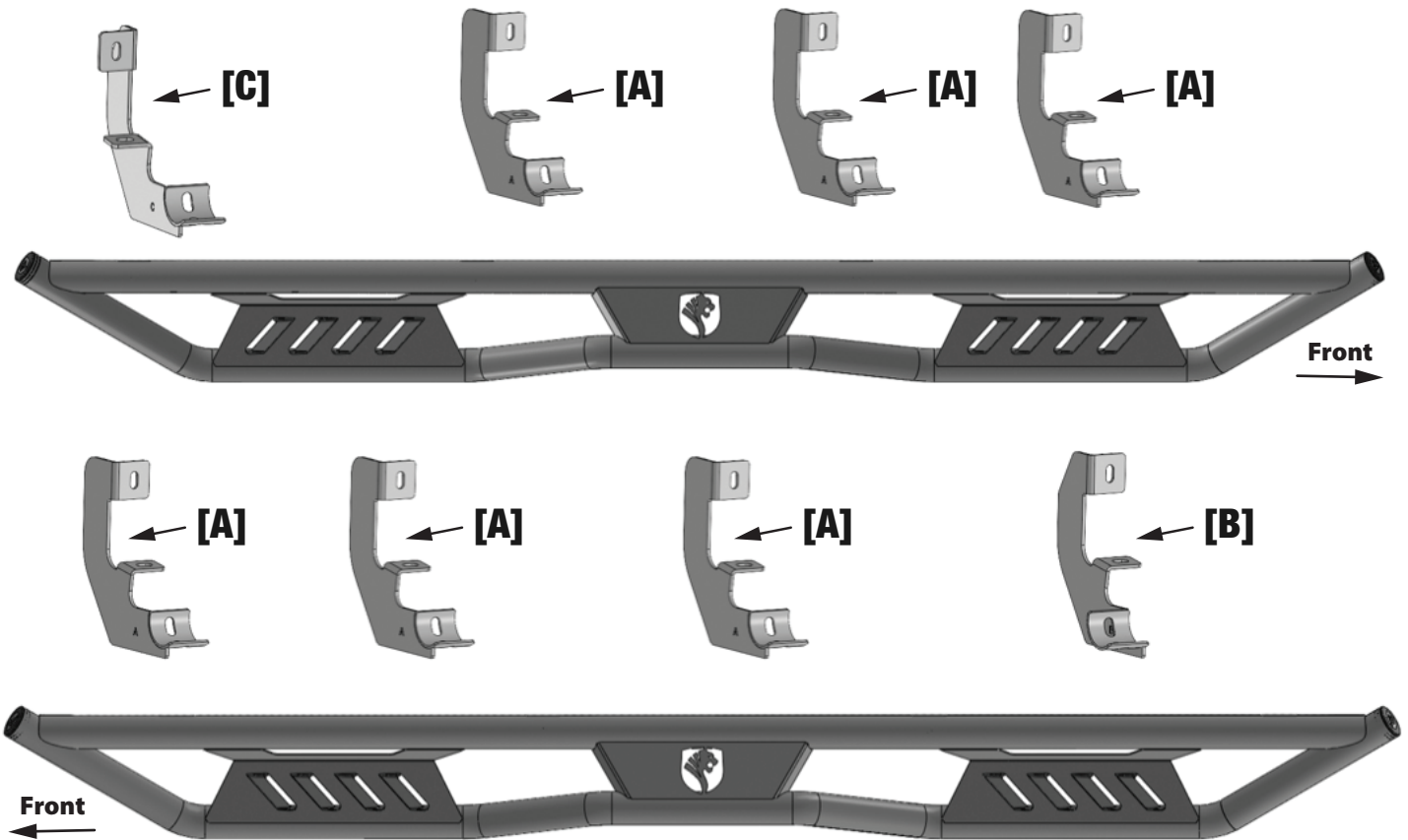
Combo Bolt

**x16** 8 - 1.25mm x 25mm Combo Bolts

Reference the letters printed on the brackets to determine mounting locations

## Top View

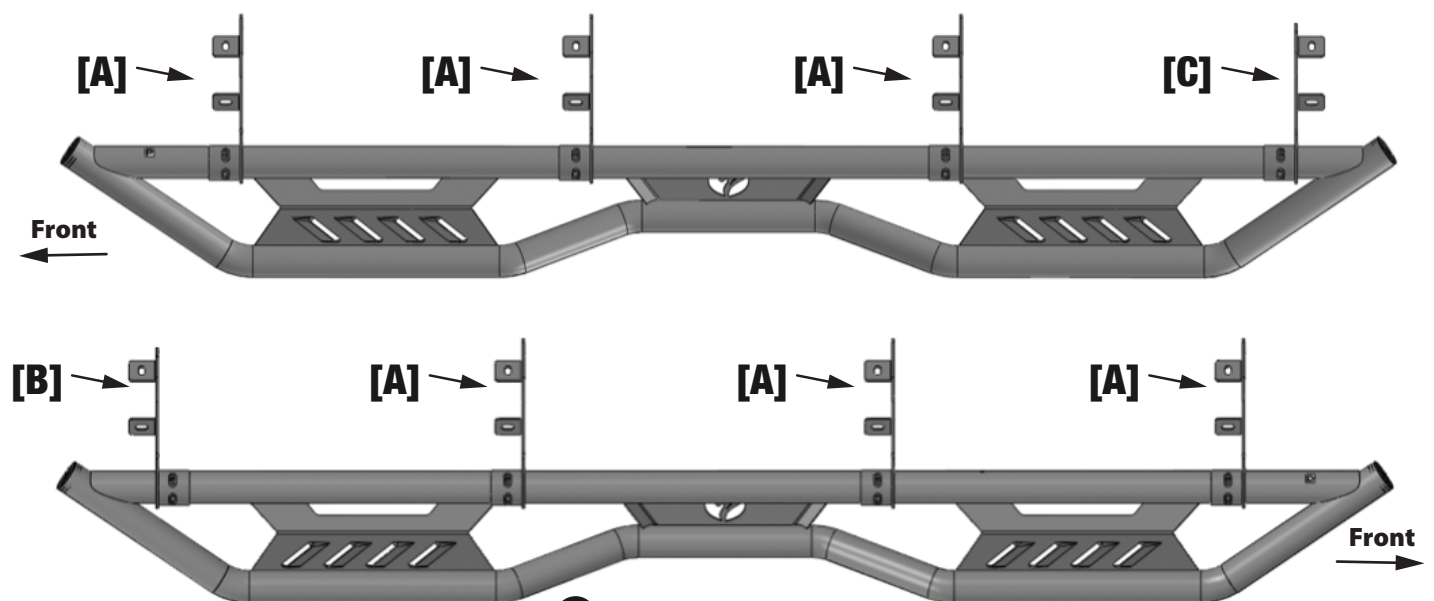
**P** Passenger Side TYGER KOBRA



**D** Driver Side TYGER KOBRA

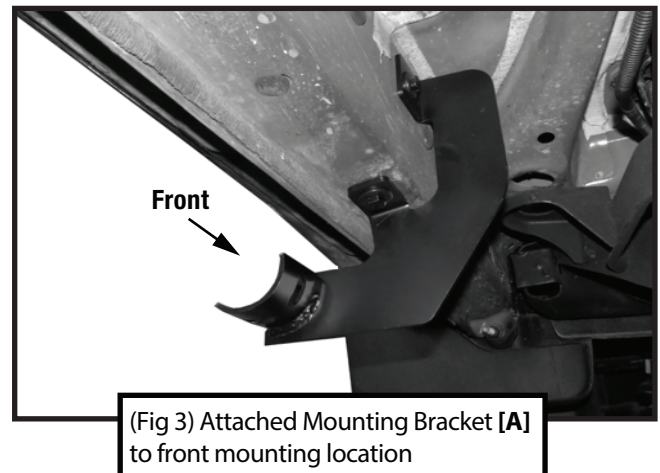
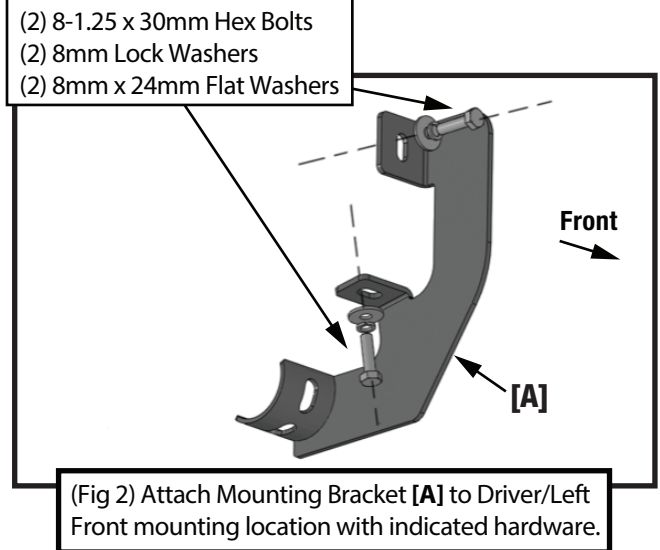
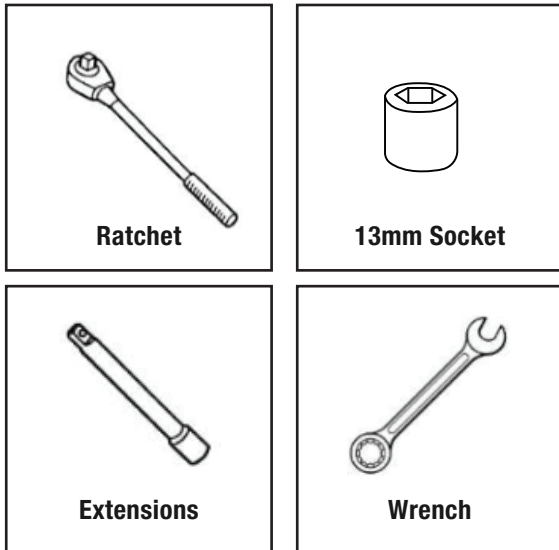
## Bottom View

**P** Passenger Side TYGER KOBRA



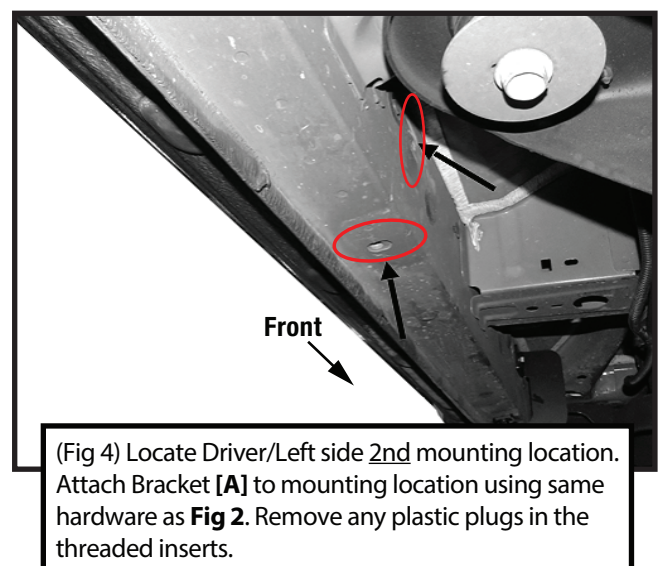
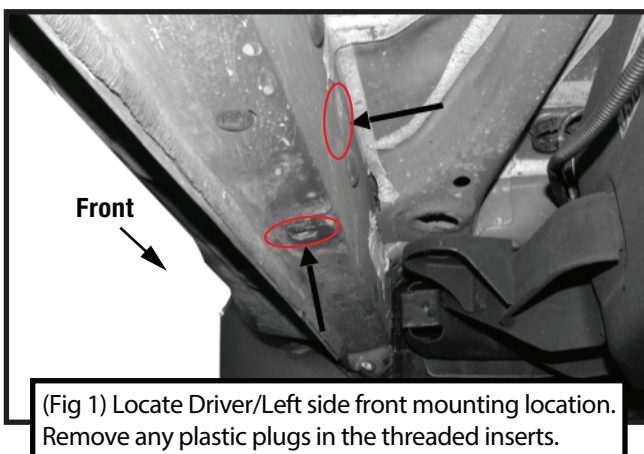
**D** Driver Side TYGER KOBRA

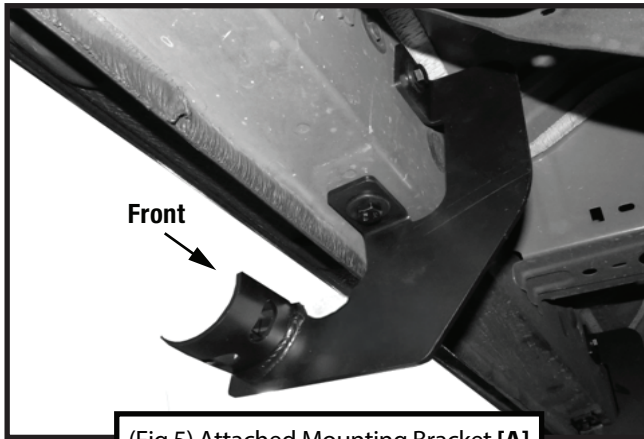
## TOOLS REQUIRED



### Driver-side **2nd** Mounting Area

### Driver-side **Front** Mounting Area

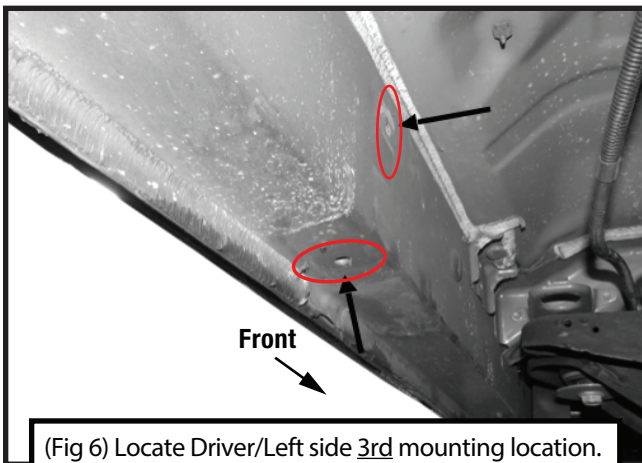




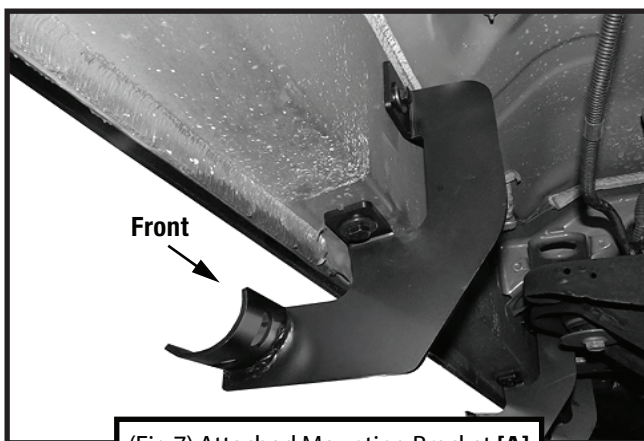
(Fig 5) Attached Mounting Bracket [A] to 2nd mounting location



### Driver-side **3rd** Mounting Area



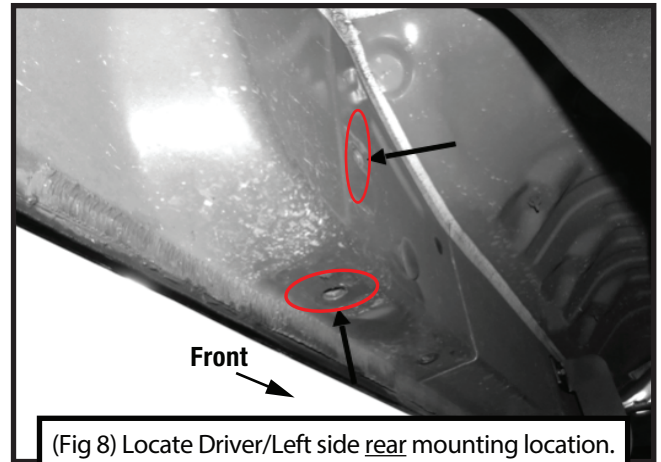
(Fig 6) Locate Driver/Left side 3rd mounting location. Attach Bracket [A] to mounting location using same hardware as **Fig 2**. Remove any plastic plugs in the threaded inserts.



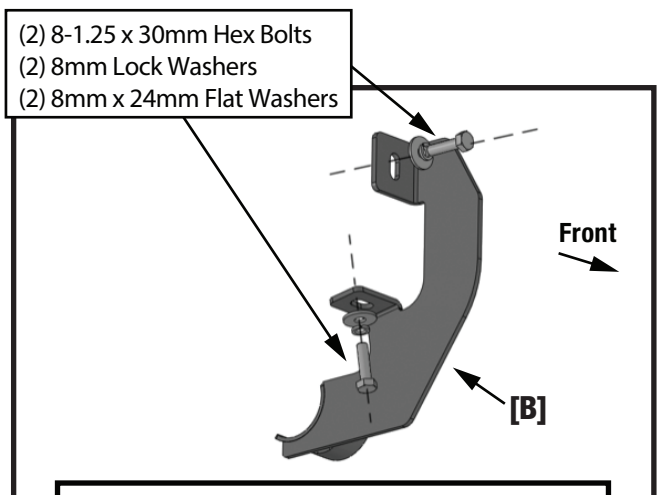
(Fig 7) Attached Mounting Bracket [A] to 3rd mounting location



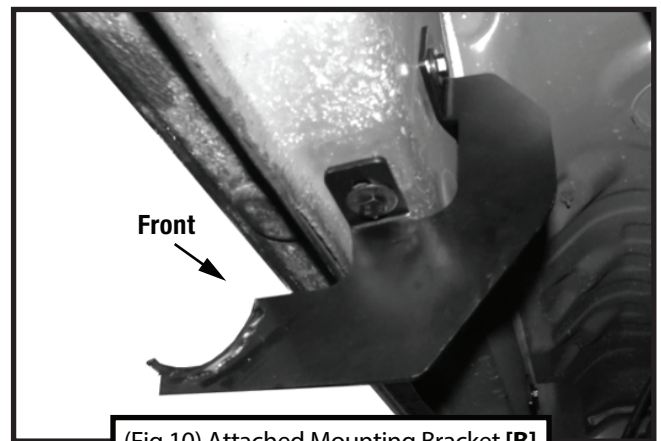
### Driver-side **Rear** Mounting Area



(Fig 8) Locate Driver/Left side rear mounting location. Remove any plastic plugs in the threaded inserts.



(Fig 9) Attach Mounting Bracket [B] to Driver/Left rear mounting location with indicated hardware.

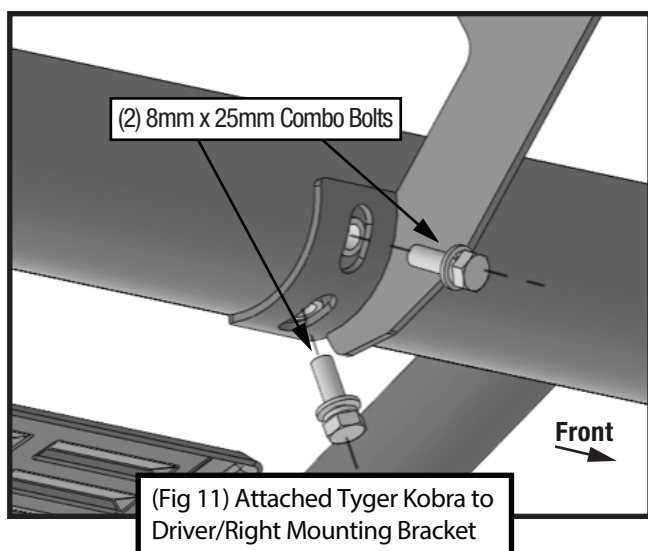


(Fig 10) Attached Mounting Bracket [B] to rear mounting location



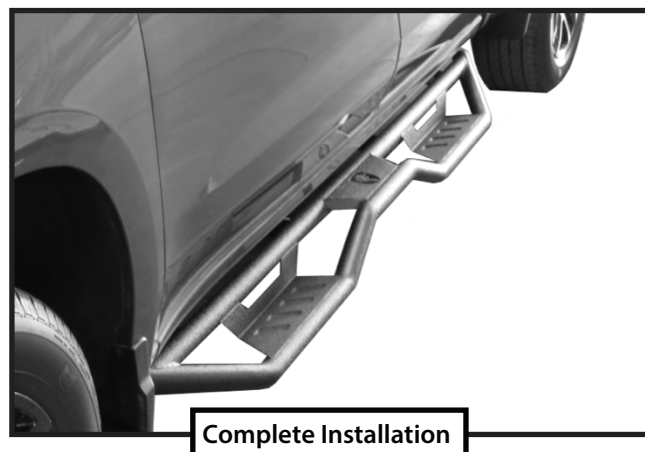
## STEP 2 MOUNTING RUNNING BOARD

Follow (Fig 11) to install the Kobra Drop Step on the Driver/Left Mounting Brackets. Ensure all hardware is hand tightened at this point.



## STEP 4

Ensure Tyger Kobra Drop Step is level and straightened, **then tighten all fasteners**. Installation is complete. Perform periodic inspections to the installation to make sure that all hardware is secure and tight.



## STEP 3 PASSENGER SIDE

Repeat **STEPS 1-2** for passenger side installation. Use Rear Mounting Bracket [C] instead of [B].

