



# TYGER®

## TYGER KOBRA

TG-KB2F25012

Scan to Download the  
Latest Digital Version



### BEFORE INSTALLATION

READ INSTRUCTIONS CAREFULLY BEFORE STARTING INSTALLATION. REMOVE CONTENTS FROM BOX AND VERIFY ALL PARTS ARE PRESENT. FAILURE TO IDENTIFY DAMAGE BEFORE INSTALLATION COULD LEAD TO A REJECTION OF ANY CLAIM. IF MISSING PARTS OR ANY DAMAGE FOUND, PLEASE TAKE A PICTURE FOR THE CLAIM PURPOSE. TO FILE YOUR CLAIM, PLEASE VISIT: [WWW.TYGERAUTO.COM/CONTACT](http://WWW.TYGERAUTO.COM/CONTACT)

### TORQUE VALUES

Fastener Size	Class 8.8 Torque (ft-lbs)	Class 10.9 Torque (ft-lbs)
6mm	6-7	6-7
8mm	15-16	22-23
10mm	31-32	44-45
12mm	54-55	78-79
14mm	87-88	125-126

- x1** Driver/Left Tyger Kobra
- x1** Passenger/Right Tyger Kobra
- x18** Plastic Retainers
- x2** Front Mounting Brackets [A]
- x4** Center/Rear Mounting Brackets [B]
- x6** Support Brackets [D]
- x24** 8mm Nylon Lock Nuts
- x12** 8-1.25mm x 25mm Hex Combo Bolts
- x24** 8mm x 22mm OD x 2mm Flat Washers

### Parts List

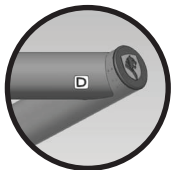
### Top View

**ATTENTION:** Refer to **D** and **P** labelling on the side of the tubes to determine Driver and Passenger TYGER Kobra

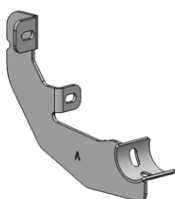
#### **P** Passenger Side TYGER Kobra



Front



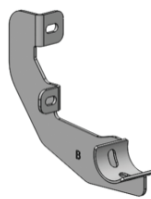
#### **D** Driver Side TYGER Kobra



**x2**

[A]

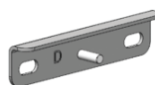
Front Mounting Brackets



**x4**

[B]

Center/Rear  
Mounting Brackets



**x6**

[D]

Support Brackets



**x18** Plastic Retainers



**x24** 8mm x 22mm OD x 2mm Flat Washers



**x24** 8mm Nylon Lock Nuts

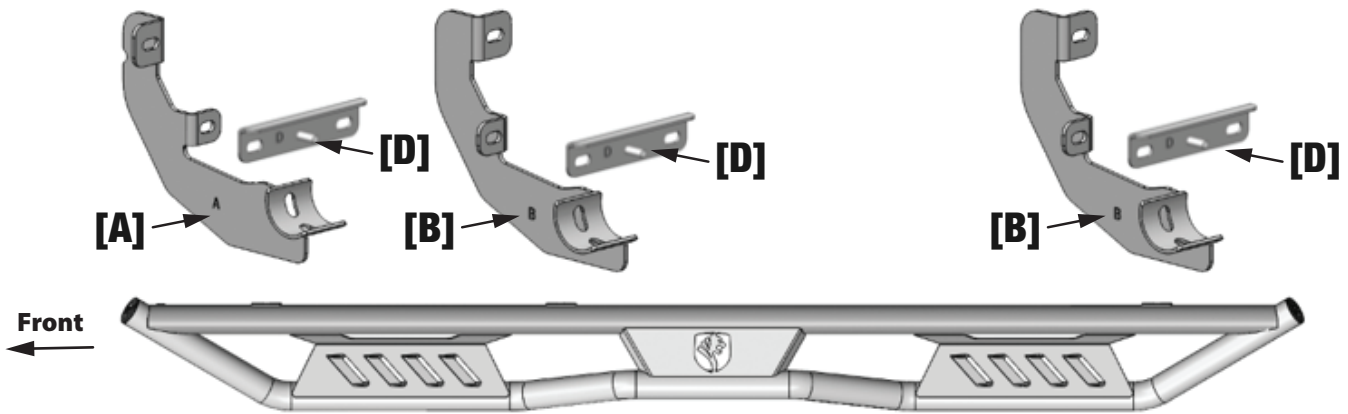
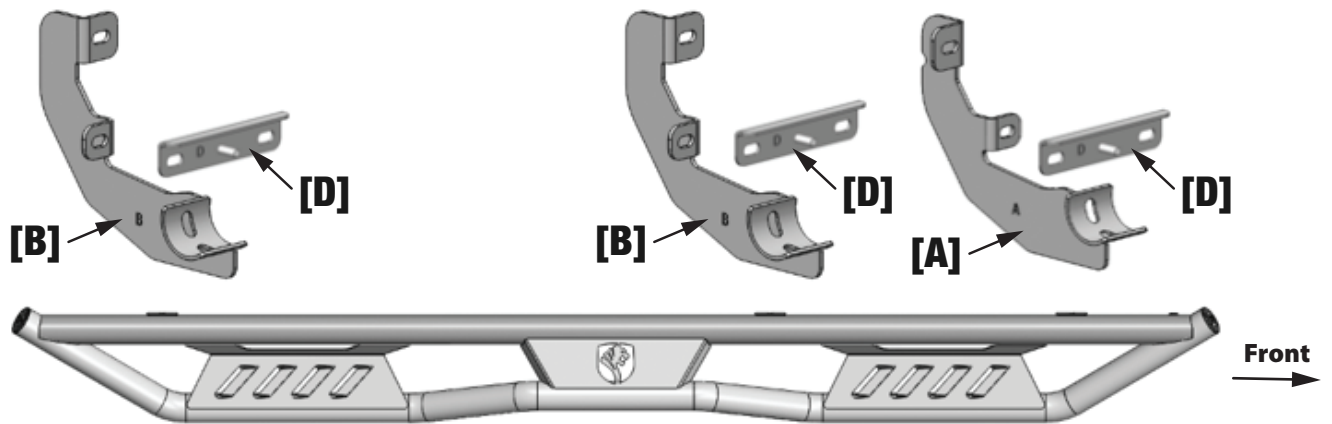


**x12** 8-1.25mm x 25mm Hex Combo Bolts

Reference the letters printed on the brackets to determine mounting locations

## Top View

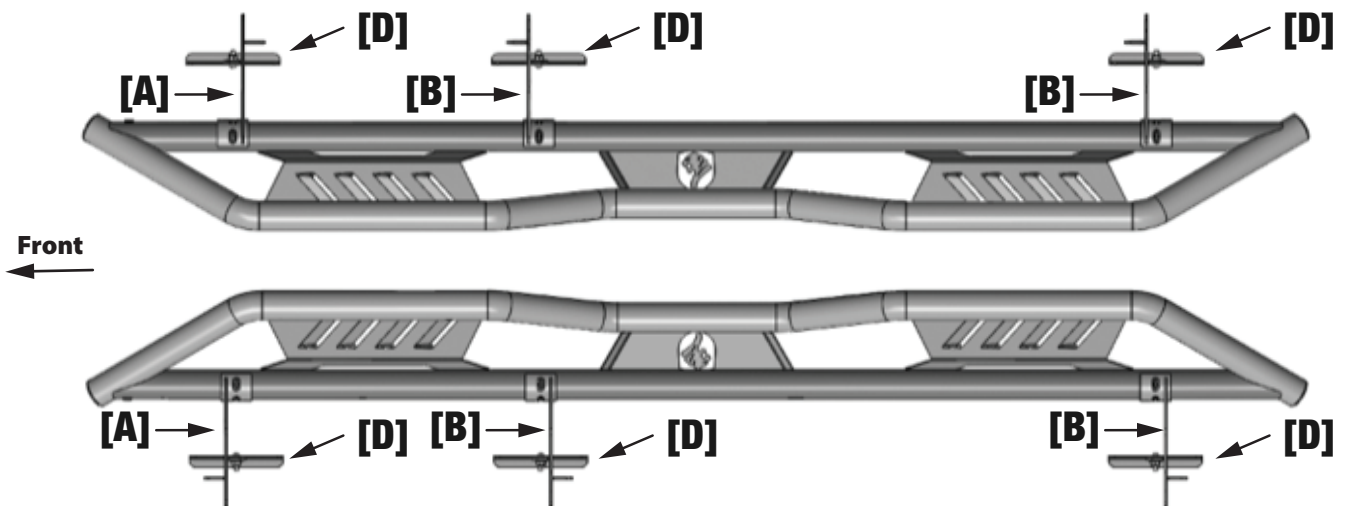
**P** Passenger Side TYGER KOBRA



**D** Driver Side TYGER KOBRA

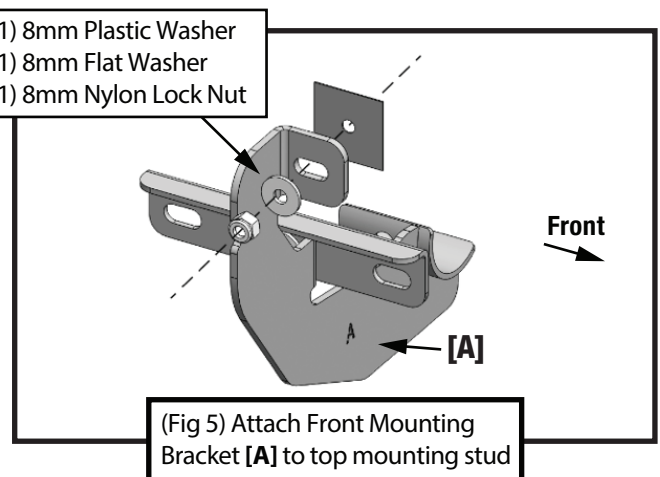
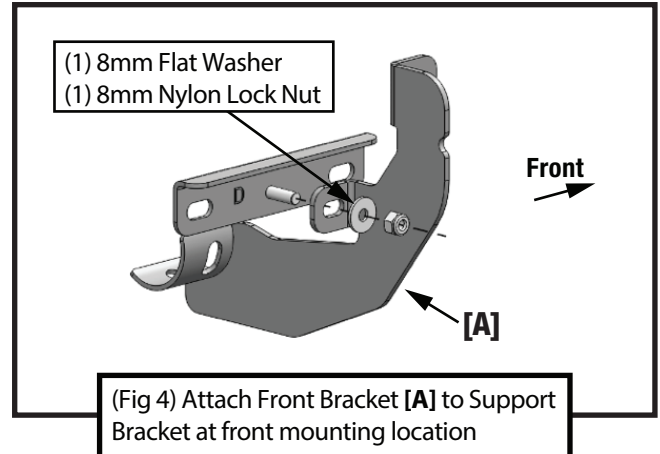
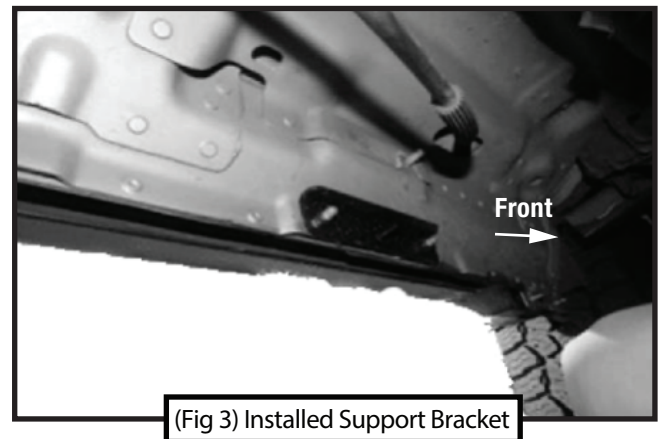
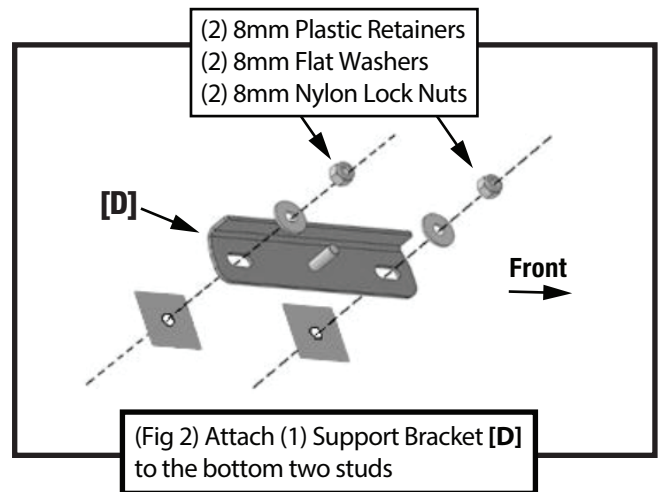
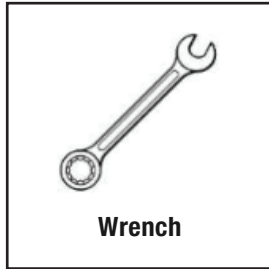
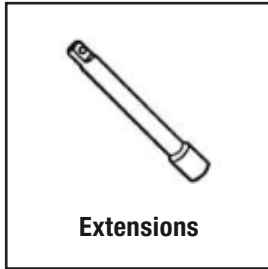
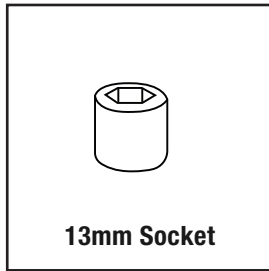
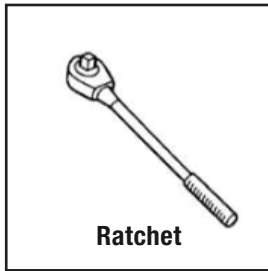
## Bottom View

**P** Passenger Side TYGER KOBRA



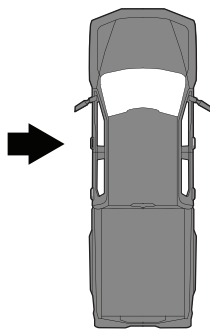
**D** Driver Side TYGER KOBRA

## TOOLS REQUIRED

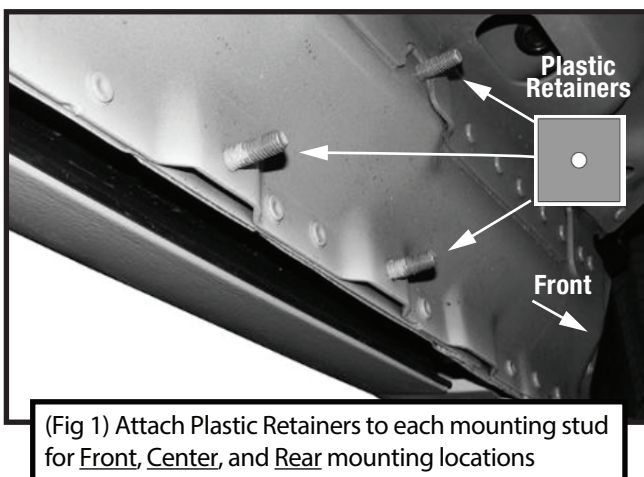


## STEP 1 MOUNTING BRACKETS

Follow (Fig 1 – 9) to attach the brackets to the Driver/Left Side.  
**Ensure all hardware is hand tightened at this point.**



**Driver-side Front Mounting Area**



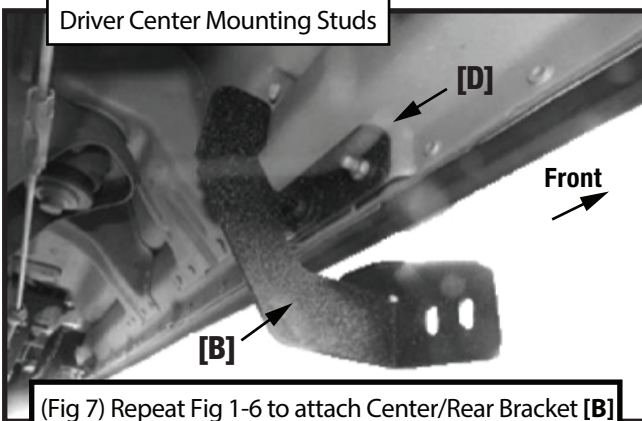


(Fig 6) Installed Front Mounting Bracket [A]



### Driver-side Center Mounting Area

#### Driver Center Mounting Studs

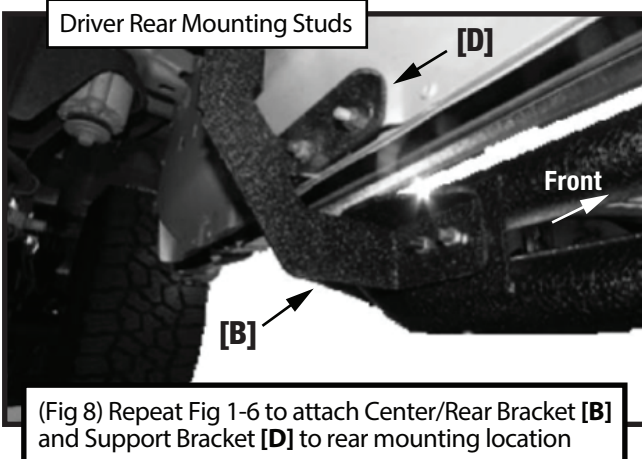


(Fig 7) Repeat Fig 1-6 to attach Center/Rear Bracket [B] and Support Bracket [D] to center mounting location.



### Driver-side Rear Mounting Area

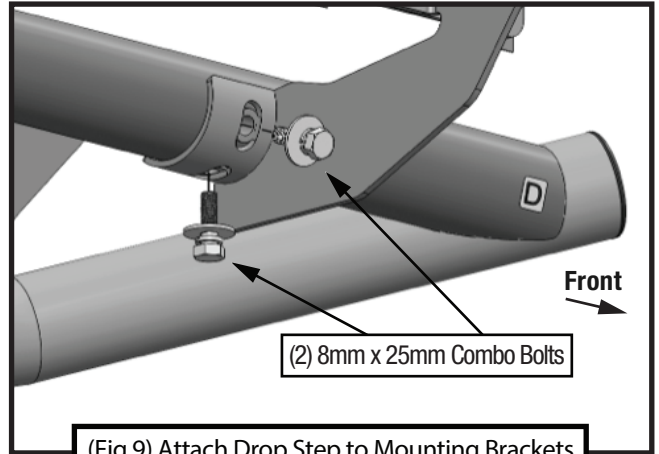
#### Driver Rear Mounting Studs



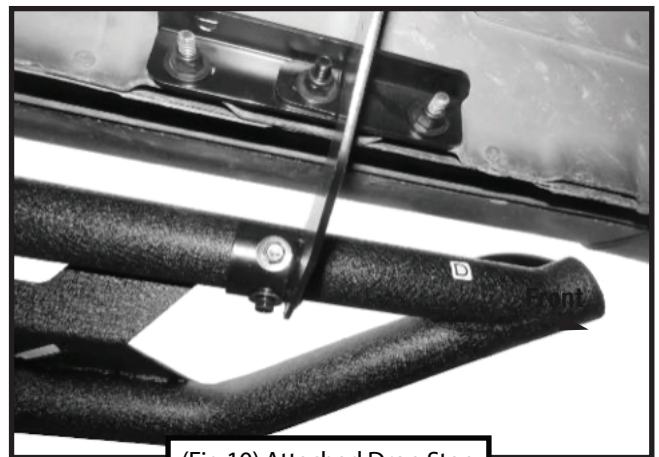
(Fig 8) Repeat Fig 1-6 to attach Center/Rear Bracket [B] and Support Bracket [D] to rear mounting location

## STEP 2 MOUNTING RUNNING BOARD

Follow (Fig 9 – 10) to install the Kobra Drop Step on the Driver/Left side. Ensure all hardware is hand tightened at this point.



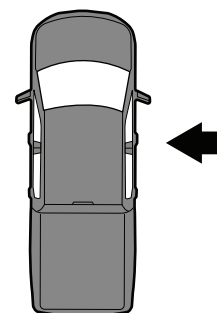
(Fig 9) Attach Drop Step to Mounting Brackets



(Fig 10) Attached Drop Step

## STEP 3 PASSENGER SIDE

Repeat **STEPS 1-2** for passenger side installation.



## STEP 4

Ensure Tyger Kobra Drop Step is level and straightened, **then tighten all fasteners**. Installation is complete. Perform periodic inspections to the installation to make sure that all hardware is secure and tight.



Complete Installation