



TYGER®

TYGER LANDER™

TG-LD2F60358

BEFORE INSTALLATION

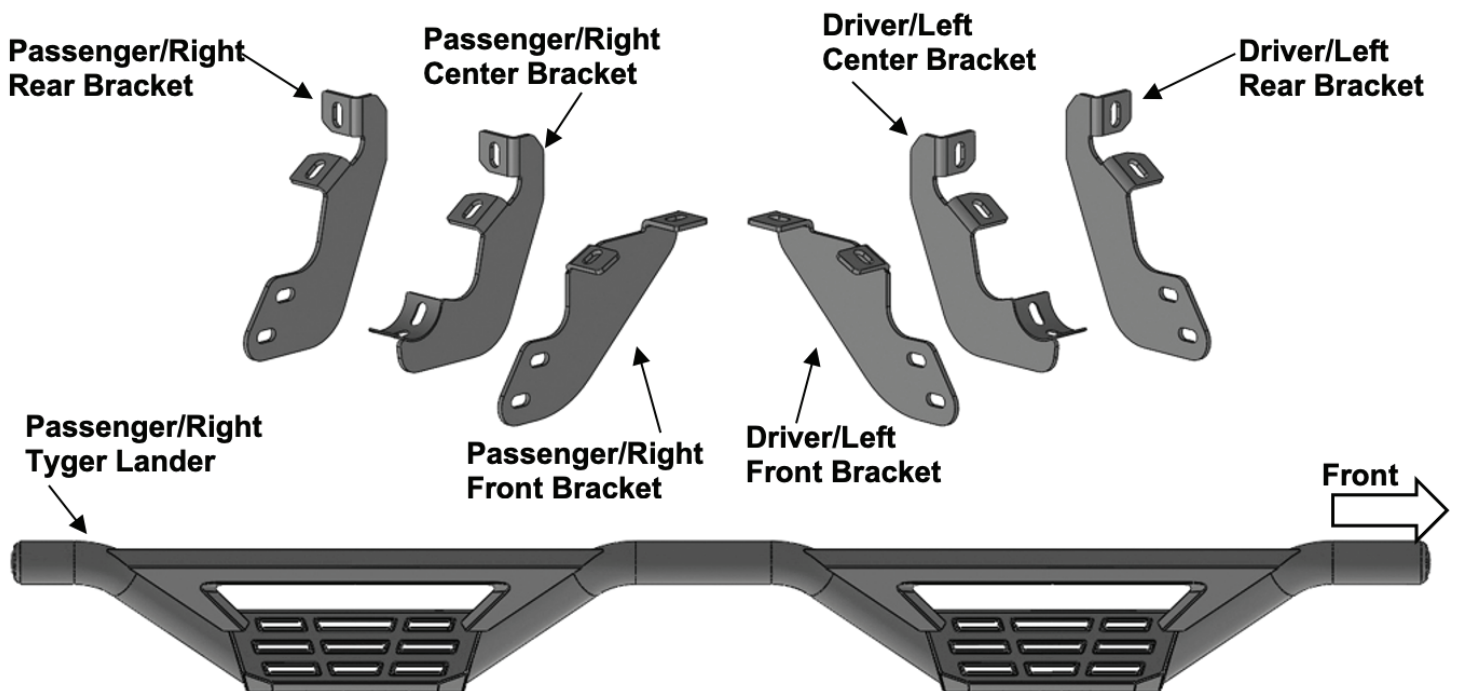
READ INSTRUCTIONS CAREFULLY BEFORE STARTING INSTALLATION. REMOVE CONTENTS FROM BOX AND VERIFY ALL PARTS ARE PRESENT. FAILURE TO IDENTIFY DAMAGE BEFORE INSTALLATION COULD LEAD TO A REJECTION OF ANY CLAIM. IF MISSING PARTS OR ANY DAMAGE FOUND, PLEASE TAKE A PICTURE FOR THE CLAIM PURPOSE. TO FILE YOUR CLAIM, PLEASE VISIT: WWW.TYGERAUTO.COM/CONTACT

TORQUE VALUES

Fastener Size	Class 8.8 Torque (ft-lbs)	Class 10.9 Torque (ft-lbs)
6mm	6-7	6-7
8mm	15-16	22-23
10mm	31-32	44-45
12mm	54-55	78-79
14mm	87-88	125-126

Parts List

- x1 Driver/Left Tyger Lander
- x1 Passenger/Right Tyger Lander
- x1 Driver/Left Front Mounting Bracket
- x1 Passenger/Right Front Mounting Bracket
- x1 Driver/Left Center Mounting Bracket
- x1 Passenger/Right Center Mounting Bracket
- x1 Driver/Left Rear Mounting Bracket
- x1 Passenger/Right Rear Mounting Bracket
- x8 10mm x 35mm Hex Bolts
- x12 10mm x 25mm Hex Bolts
- x12 10mm Lock Washers
- x28 10mm x 27mm OD x 3mm Flat Washers
- x8 10mm Nylon Lock Nuts
- x4 8mm x 25mm Combo Bolts





TYGER[®]

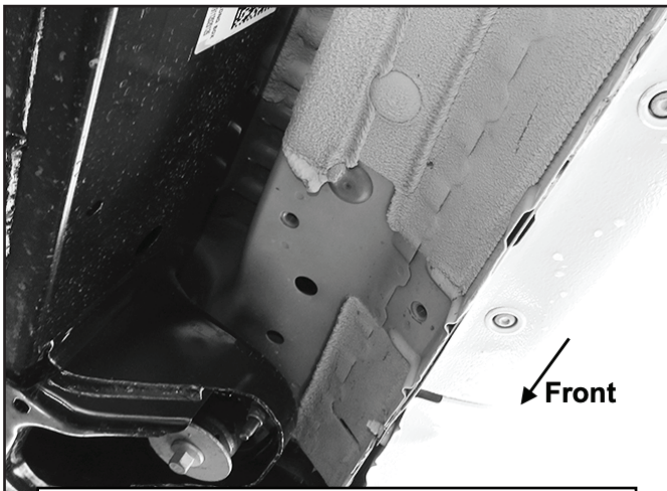
STEP 1

REMOVE CONTENTS FROM BOX. VERIFY ALL PARTS ARE PRESENT. READ INSTRUCTIONS CAREFULLY BEFORE STARTING INSTALLATION.

STEP 2

Starting from underneath the Passenger/Right body panel, locate the front mounting location and the threaded holes in the body panel (Fig 1). Remove the plastic plugs covering the holes.

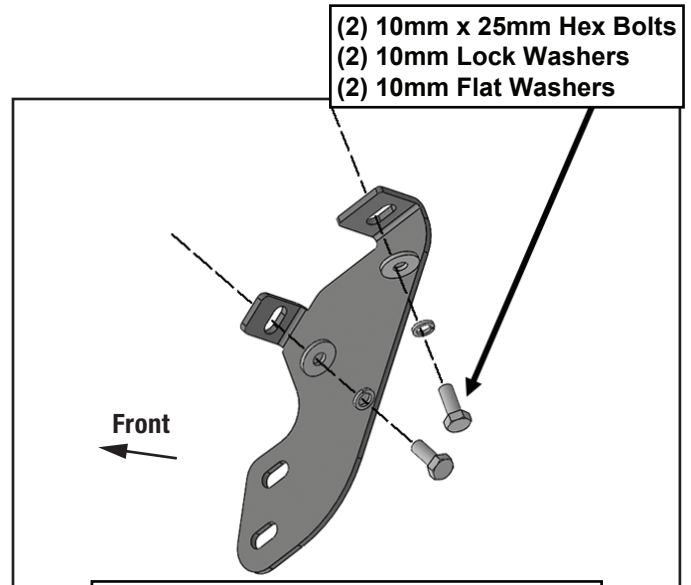
Passenger/Right Side Installation Pictured



(Fig 1) Passenger/Right front mounting location

STEP 3

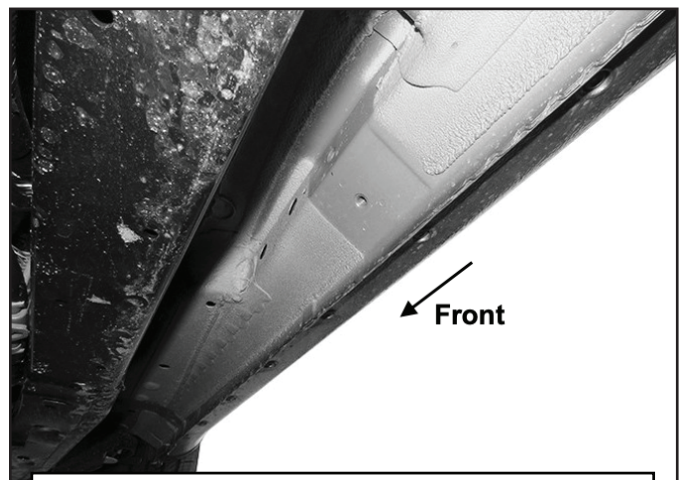
Select the Passenger/Right Front Mounting Bracket. Attach the Mounting Bracket to the front location with (2) 10mm x 25mm Hex Bolts, (2) 10mm Lock Washers and (2) 10mm Flat Washers (Fig 2). DO NOT tighten hardware.



(Fig 2) Attach the Passenger/Right Front Mounting Bracket to the front location

STEP 4

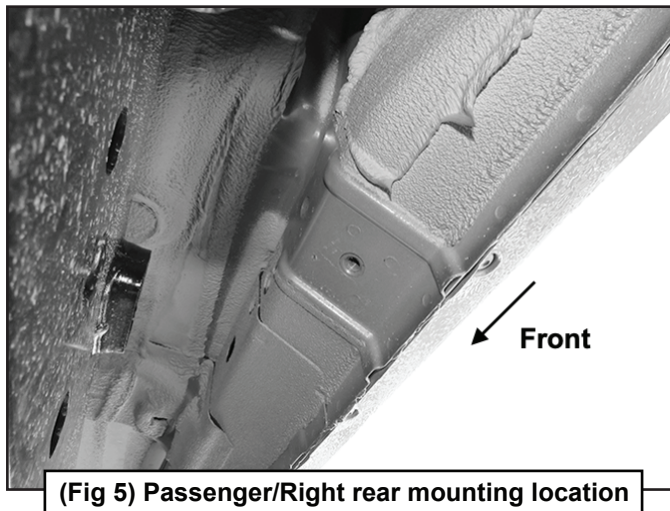
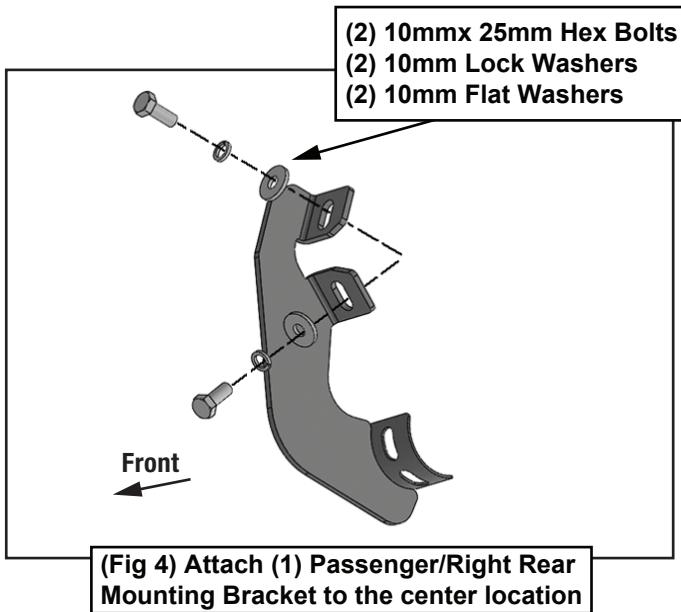
Repeat **STEPS 2 & 3** to attach (2) Rear Mounting Brackets to the center and rear locations (Figs 3-5). DO NOT tighten hardware.



(Fig 3) Passenger/Right center mounting location



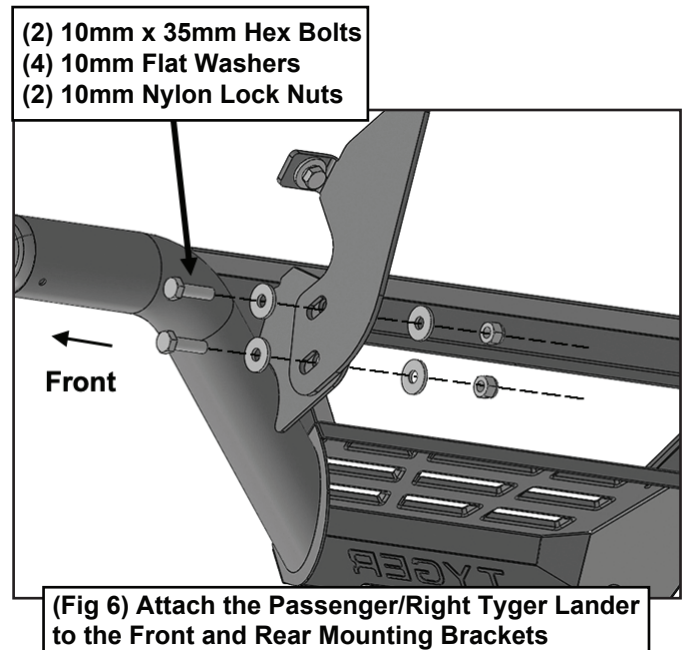
TYGER®



STEP 5

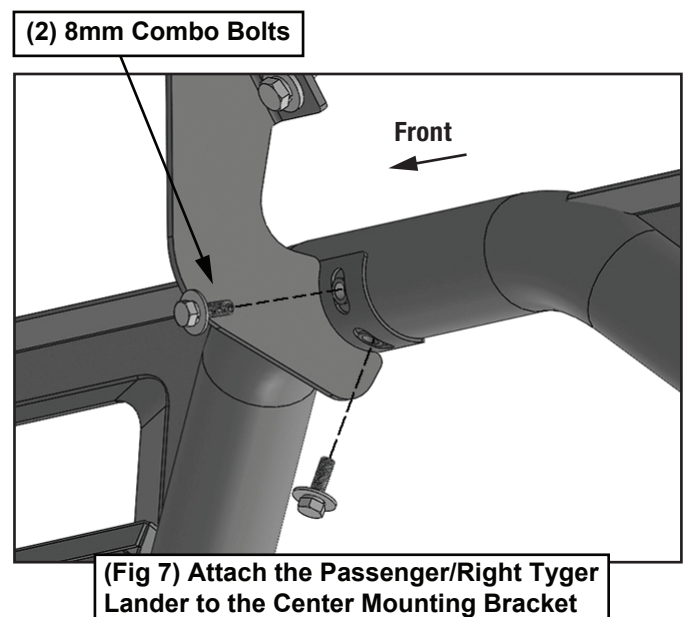
Select the Passenger/Right Tyger Lander. Place the Tyger Lander onto the cradle of the Center Mounting Bracket.

IMPORTANT: DO NOT slide the Tyger Lander front to back or damage to the finish may result. Attach the Tyger Lander to the Front and Rear Mounting Brackets with (4) 10mm x 35mm Hex Bolts, (8) 10mm Flat Washers and (4) 10mm Nylon Lock Nuts (Fig 6). DO NOT tighten hardware.



STEP 6

Attach the Tyger Lander to the Center mounting Bracket with (2) 8mm Combo Bolts (Fig 7). DO NOT tighten hardware.





TYGER[®]

STEP 7

Level and adjust the Tyger Lander and tighten all hardware.

STEP 8

Repeat **STEPS 1-7** to attach the Driver/Left Tyger Lander.

STEP 9

Do periodic inspections to the installation to make sure that all hardware is secure and tight.