



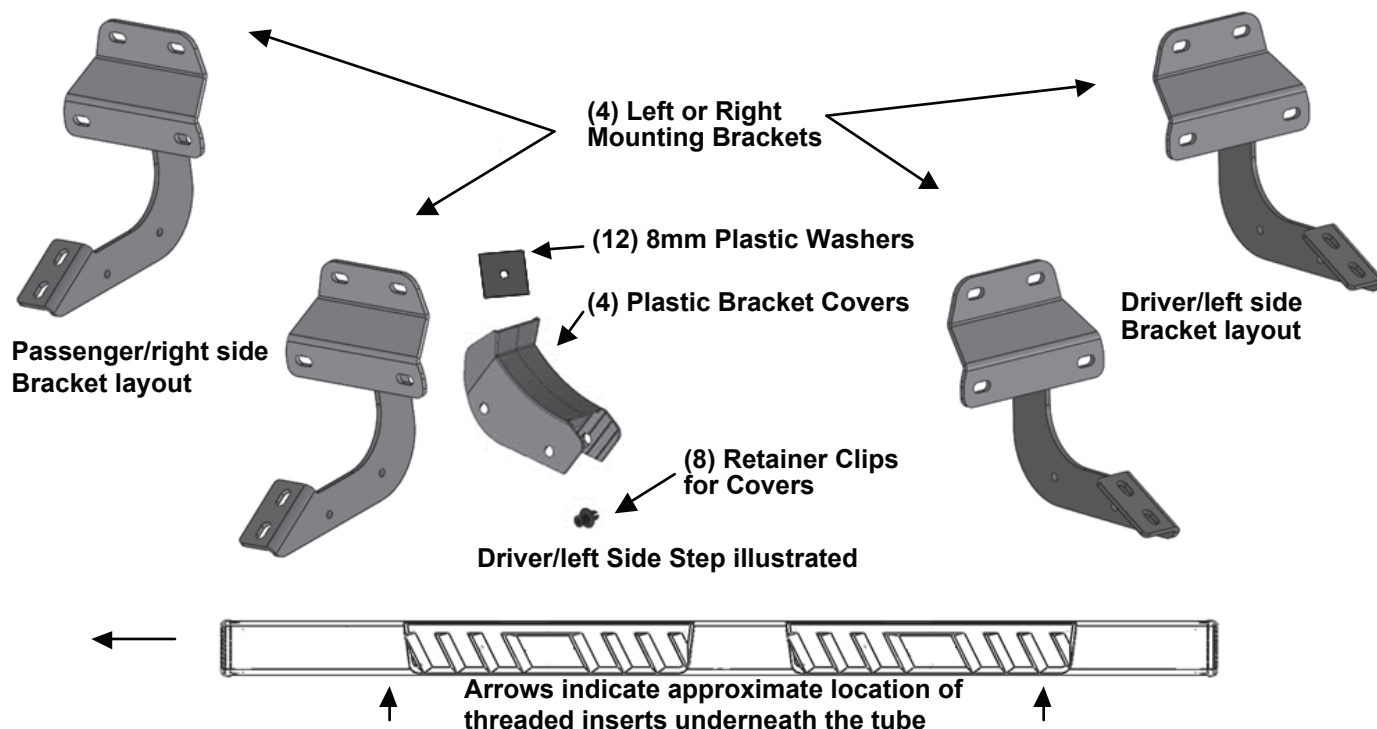
TYGER®

RISER®

Part#: TG-RS2F40098

Parts List

- | | |
|--|--|
| x1 Driver/left Side Step | x12 8mm x 24mm OD x 2mm Washers |
| x1 Passenger/right Side Step | x12 8-1.25mm Nylon Lock Nuts |
| x4 Sidebar Brackets (use for left or right) | x8 Retainer Clips |
| x12 8mm Plastic Washers | x4 Plastic Bracket Covers |
| x8 8mm x 25mm Combination Bolts | |





TYGER®

Before Installation

REMOVE CONTENTS FROM BOX. VERIFY ALL PARTS ARE PRESENT. READ INSTRUCTIONS CAREFULLY BEFORE STARTING INSTALLATION. ASSISTANCE IS RECOMMENDED.

STEP 1

Start the installation under the driver side of the vehicle. Locate the front factory running board mounting location along the inner side of the body, (Figure 1).

STEP 2

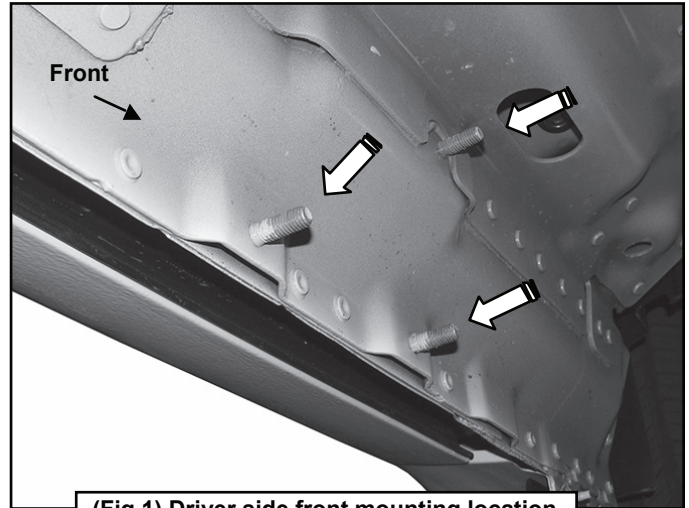
Slide (1) Plastic Washer over each factory mounting stud in the body panel, (Figures 2 & 3). **IMPORTANT:** The Plastic Washers are designed to prevent corrosion between the aluminum body panel and the steel mounting brackets. Do not install the Brackets without the Plastic Washers.

STEP 3

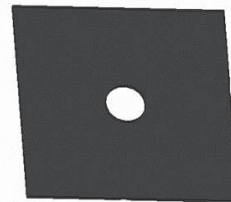
Select (1) Mounting Bracket. **NOTE:** All (4) Brackets are universal and will fit left or right side. Attach the Mounting Bracket to the (3) factory studs with (3) 8mm Flat Washers and (3) 8mm Nylon Lock Nuts, (Figure 4). Snug but do not fully tighten the hardware.

STEP 4

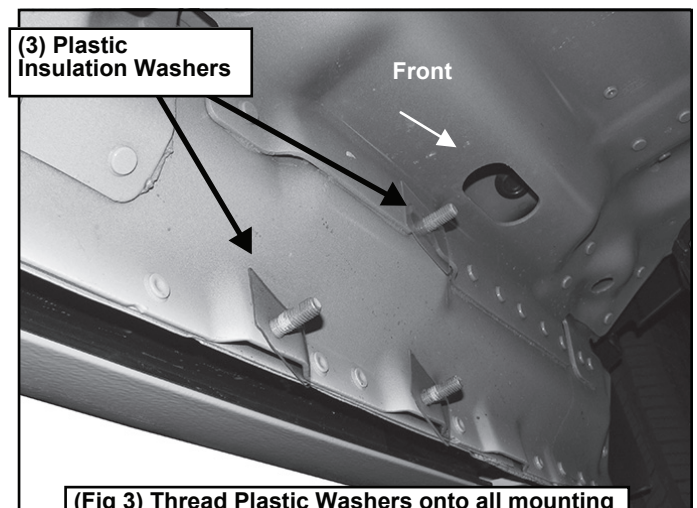
Repeat Steps 1-3 to install the driver side rear Bracket.



(Fig 1) Driver side front mounting location



(Fig 2) Plastic Insulation Washer



(Fig 3) Thread Plastic Washers onto all mounting studs. Driver side front location pictured



TYGER[®]

STEP 5

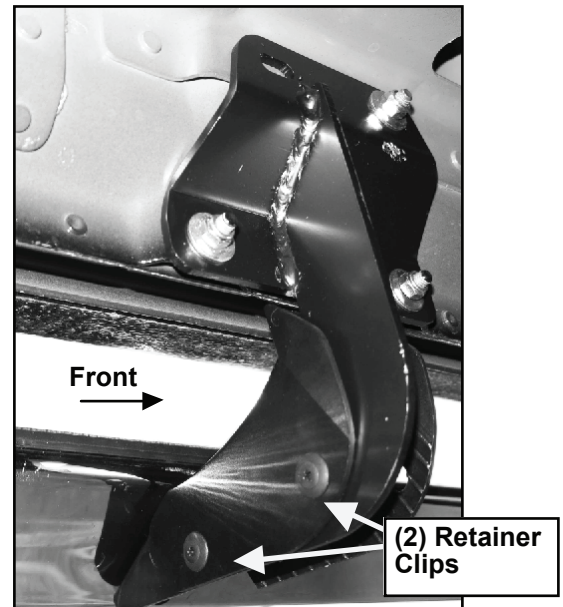
Select (1) Plastic Bracket Cover and (2) Retaining Clips. Slide the Cover over the Mounting Bracket. Line up the (2) mounting holes in the Cover with the holes in the Mounting Bracket. Insert the Clip into the holes and push center pin to expand Clip, (Figure 5). Repeat this Step for all Cover installation for rear passenger side Bracket.

STEP 6

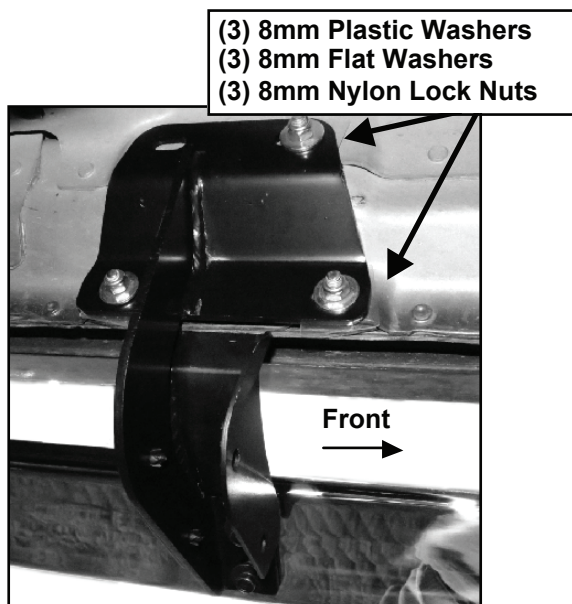
Select the Driver/left Side Step. Carefully position the Side Step onto the (2) Mounting Brackets. **IMPORTANT:** Do not slide, (front to back or rotate), the Side Step on the Brackets or damage to the finish may result. Attach the Side Step to the Mounting Brackets with (4) 8mm x 25mm Combination Bolts (Figure 6).

STEP 7

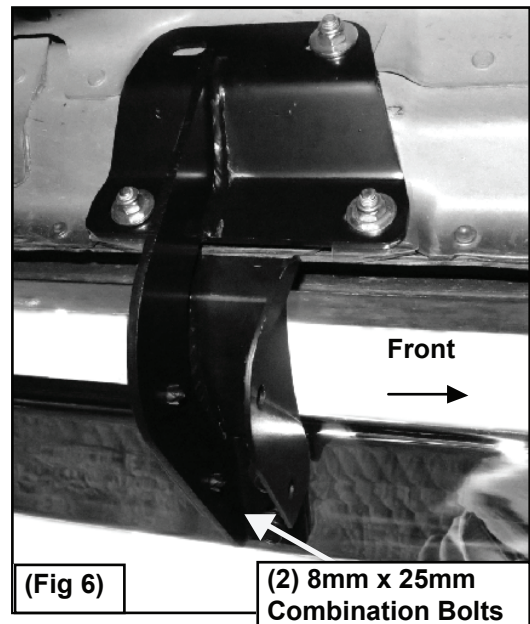
Level and adjust the Side Step and tighten all hardware.



(Fig 5) Plastic Cover installation onto front bracket



(Fig 4) Driver side front Bracket installation



(Fig 6)

(2) 8mm x 25mm
Combination Bolts



TYGER®

STEP 8

Repeat Steps 1-7 to install the passenger/right Side Step.

STEP 9

Do periodic inspections to the installation to make sure that all hardware is secure and tight.

NOTE:

Mild soap may be used to clean the side step



Complete Installation