



TYGER®

TYGER RIDER®

TG-SS2T36718

Scan to Download the
Latest Digital Version



BEFORE INSTALLATION

READ INSTRUCTIONS CAREFULLY BEFORE STARTING INSTALLATION. REMOVE CONTENTS FROM BOX AND VERIFY ALL PARTS ARE PRESENT. FAILURE TO IDENTIFY DAMAGE BEFORE INSTALLATION COULD LEAD TO A REJECTION OF ANY CLAIM. IF MISSING PARTS OR ANY DAMAGE FOUND, PLEASE TAKE A PICTURE FOR THE CLAIM PURPOSE. TO FILE YOUR CLAIM, PLEASE VISIT: WWW.TYGERAUTO.COM/CONTACT

TORQUE VALUES

Fastener Size	Class 8.8 Torque (ft-lbs)	Class 10.9 Torque (ft-lbs)
6mm	6-7	6-7
8mm	15-16	22-23
10mm	31-32	44-45
12mm	54-55	78-79
14mm	87-88	125-126

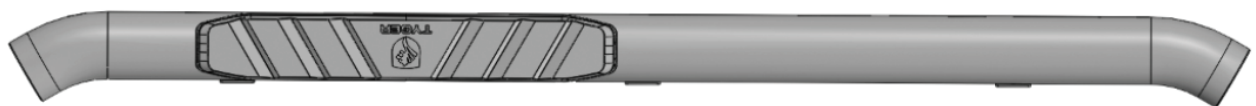
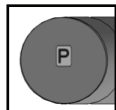
- | | |
|---|---|
| x1 Driver/Left Tyger Rider | x2 Passenger/Right Center/Rear Mounting Brackets [D] |
| x1 Passenger/Right Tyger Rider | x12 8mm Lock Washers |
| x1 Driver/Left Front Mounting Bracket [A] | x12 8mm x 24mm x 2mm Flat Washers |
| x2 Driver/Left Center/Rear Mounting Brackets [B] | x12 8-1.25mm x 30mm Hex Bolts |
| x1 Passenger/Right Front Mounting Bracket [C] | x12 8-1.25mm x 25mm Combo Bolts |

Parts List

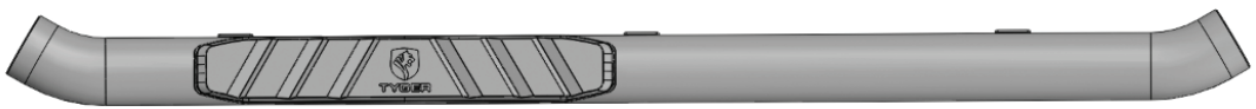
Top View

ATTENTION: Refer to **D** and **P** labelling on the side of the tubes to determine Driver and Passenger TYGER RIDER

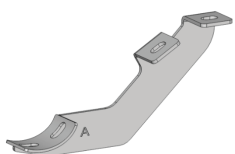
P Passenger Side TYGER RIDER



Front
←



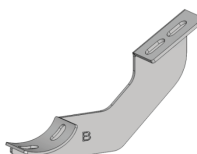
D Driver Side TYGER RIDER



x1

[A]

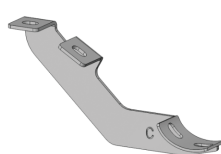
Driver/Left Front Mounting Bracket



x2

[B]

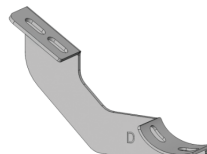
Driver/Left Center/Rear Mounting Brackets



x1

[C]

Passenger/Right Front Mounting Bracket



x2

[D]

Passenger/Right Center/Rear Mounting Brackets



Hex Bolt

x12 8mm x 1.25mm x 30mm Hex Bolts



Flat Washer

x12 8mm x 24mm x 2mm Flat Washers



Lock Washers

x12 8mm Lock Washers



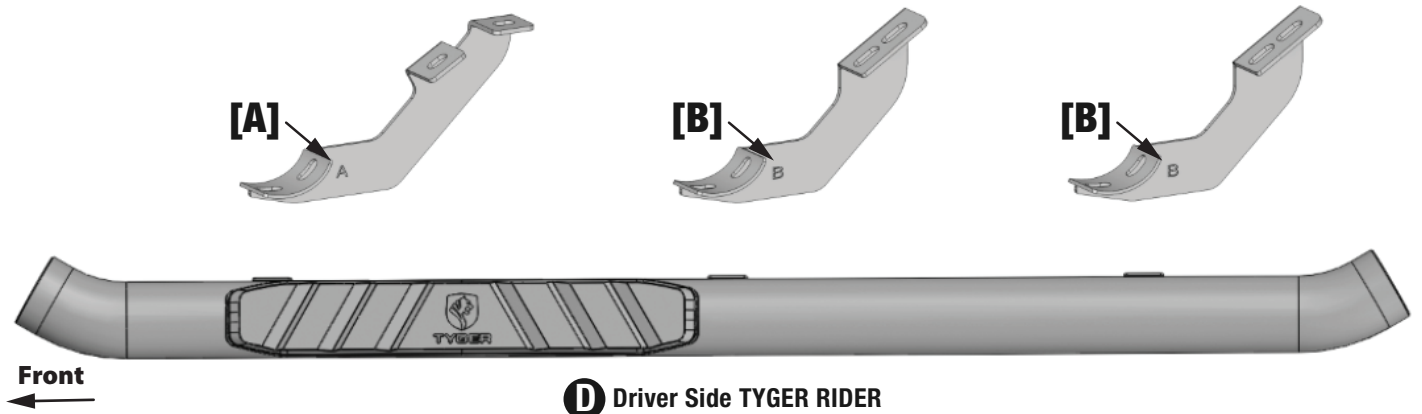
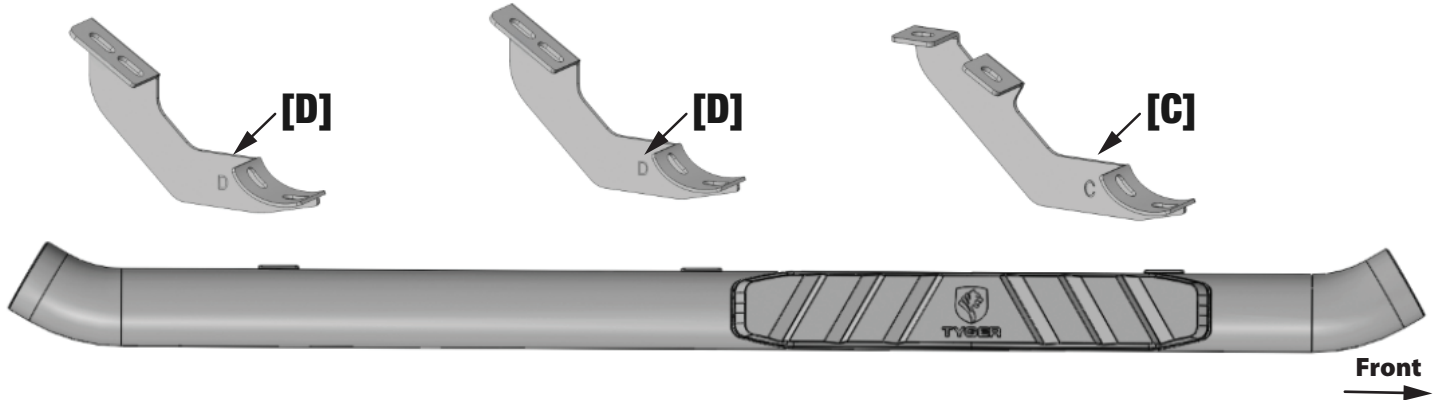
Combo Bolt

x12 8 - 1.25mm x 25mm Combo Bolts

Reference the letters printed on the brackets to determine mounting locations

Top View

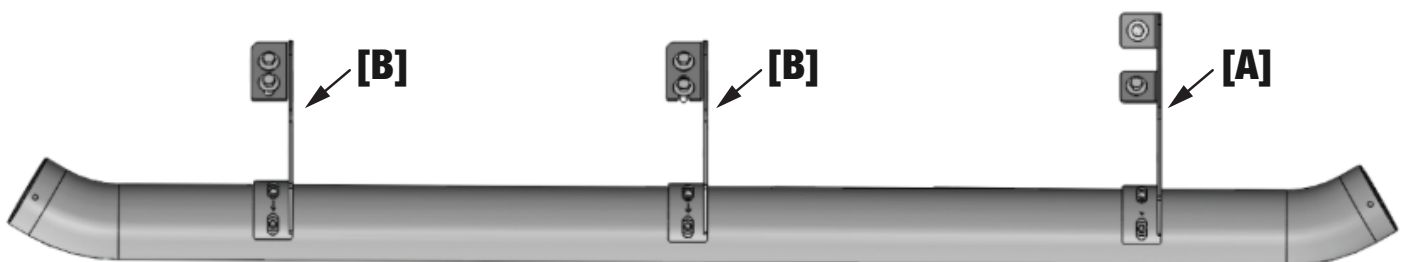
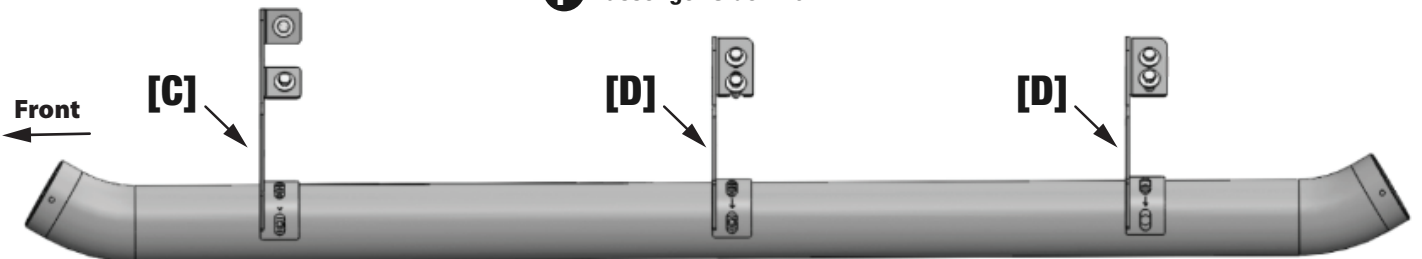
P Passenger Side TYGER RIDER



D Driver Side TYGER RIDER

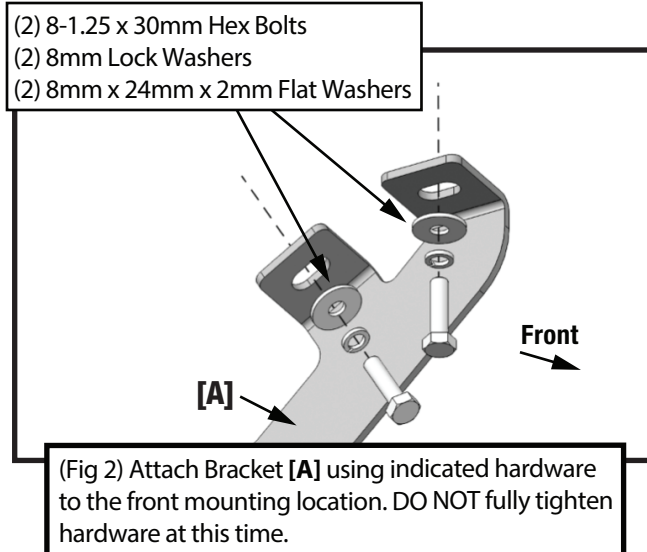
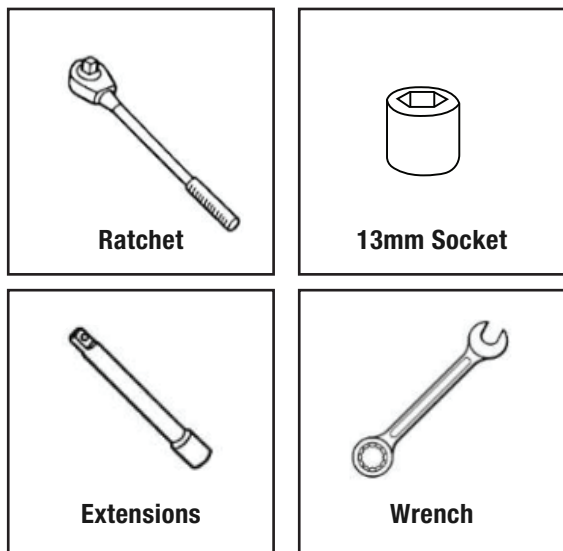
Bottom View

P Passenger Side TYGER RIDER



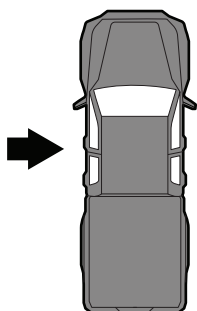
D Driver Side TYGER RIDER

TOOLS REQUIRED

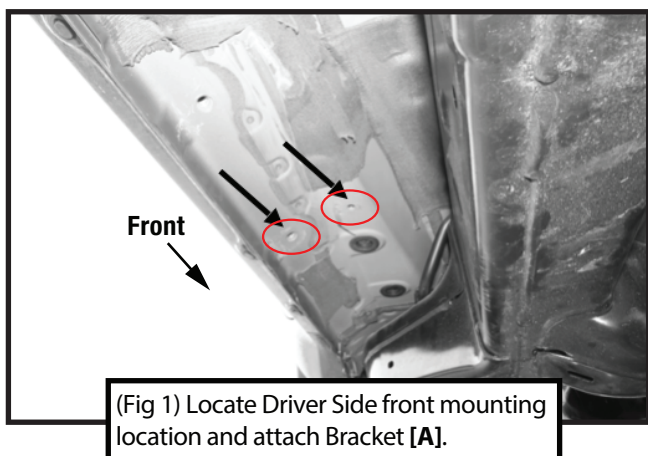


STEP 1 MOUNTING BRACKETS

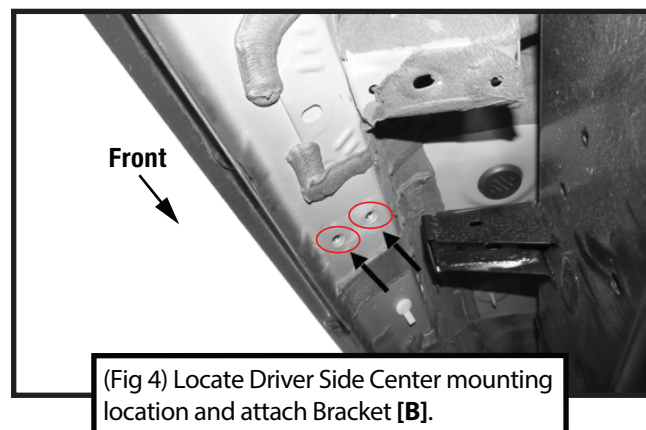
Follow (Fig 1 – 9) to attach the brackets to the Driver/Left Side. **DO NOT** fully tighten hardware at this time.



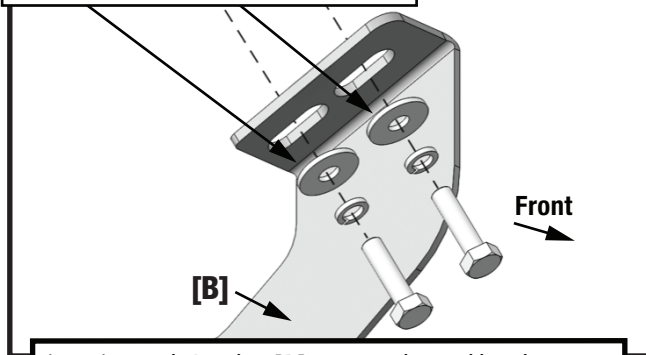
Driver-side Front Mounting Area



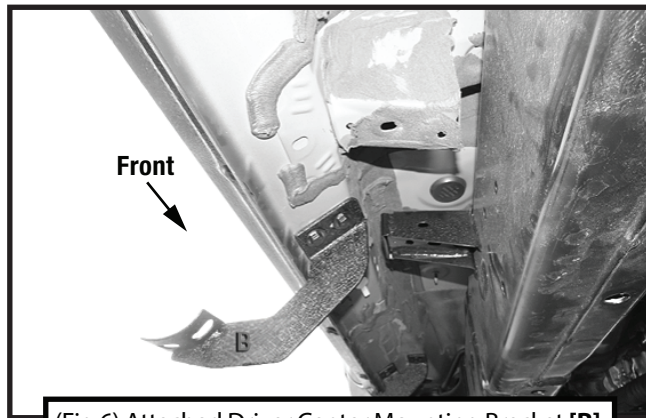
Driver-side Center Mounting Area



- (2) 8-1.25 x 30mm Hex Bolts
- (2) 8mm Lock Washers
- (2) 8mm x 24mm x 2mm Flat Washers



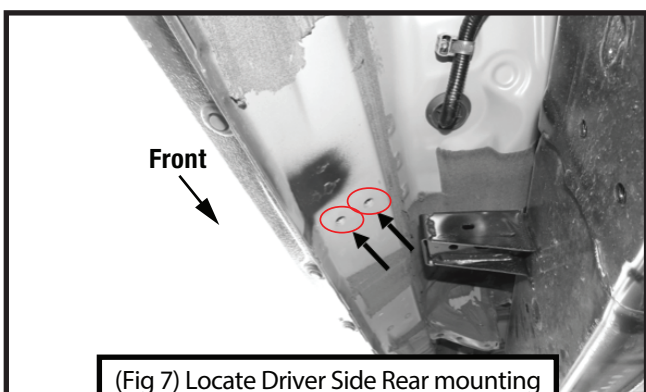
(Fig 5) Attach Bracket [B] using indicated hardware to the center mounting location. DO NOT fully tighten hardware at this time.



(Fig 6) Attached Driver Center Mounting Bracket [B]

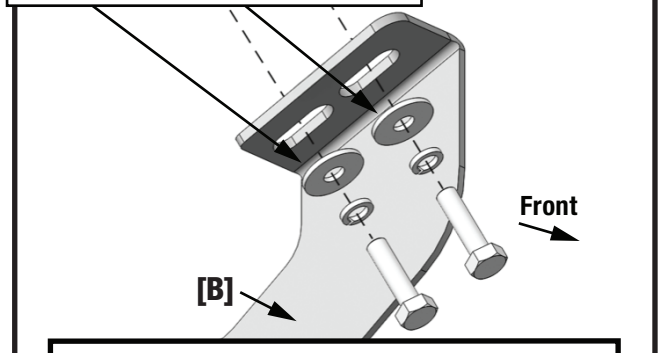


Driver-side Rear Mounting Area

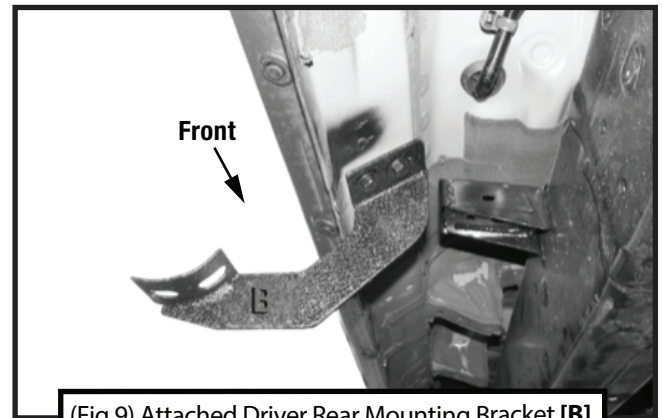


(Fig 7) Locate Driver Side Rear mounting location and attach Bracket [B].

- (2) 8-1.25 x 30mm Hex Bolts
- (2) 8mm Lock Washers
- (2) 8mm x 24mm x 2mm Flat Washers



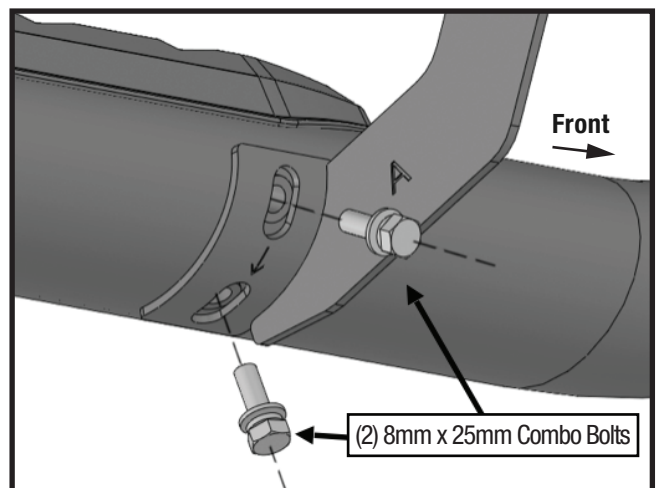
(Fig 8) Attach Bracket [B] using indicated hardware to the rear mounting location. DO NOT fully tighten hardware at this time.



(Fig 9) Attached Driver Rear Mounting Bracket [B]

STEP 2 MOUNTING RUNNING BOARD

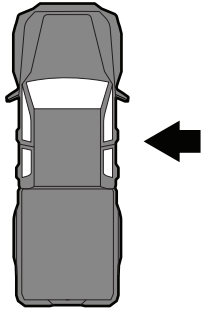
Follow (Fig 10) to install the Side Bar on the Driver/Left.



(Fig 10) Attach brackets to Side Bar using indicated hardware.

STEP 3 DRIVER SIDE

Repeat **STEPS 1-2** for passenger side installation.
 Use Front Mounting Bracket **[C]** instead of **[A]**;
 Use Center & Rear Mounting Brackets **[D]** instead of **[B]**.



STEP 4

Installation is complete. **Tighten all hardware at this time to preferred position.** Do periodic inspections to the installation to make sure that all hardware is secure and tight.

