



TYGER®

TYGER RIDER®

TG-SS2T36918

Scan to Download the
Latest Digital Version



BEFORE INSTALLATION

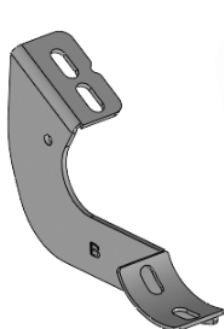
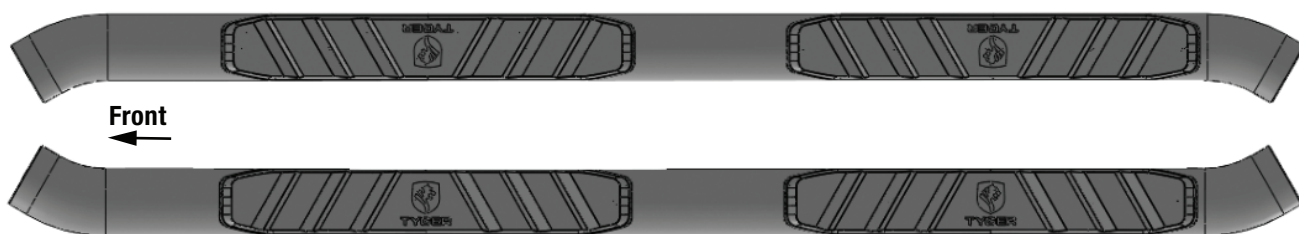
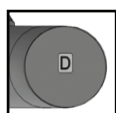
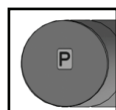
READ INSTRUCTIONS CAREFULLY BEFORE STARTING INSTALLATION. REMOVE CONTENTS FROM BOX AND VERIFY ALL PARTS ARE PRESENT. FAILURE TO IDENTIFY DAMAGE BEFORE INSTALLATION COULD LEAD TO A REJECTION OF ANY CLAIM. IF MISSING PARTS OR ANY DAMAGE FOUND, PLEASE TAKE A PICTURE FOR THE CLAIM PURPOSE. TO FILE YOUR CLAIM, PLEASE VISIT: WWW.TYGERAUTO.COM/CONTACT

TORQUE VALUES

Fastener Size	Class 8.8 Torque (ft-lbs)	Class 10.9 Torque (ft-lbs)
6mm	6-7	6-7
8mm	15-16	22-23
10mm	31-32	44-45
12mm	54-55	78-79
14mm	87-88	125-126

Parts List

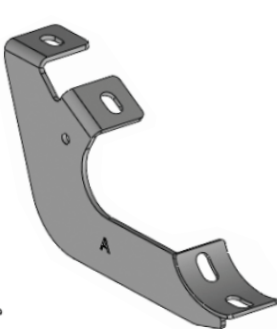
- x1 Driver/Left Sidebar
- x1 Passenger/Right Sidebar
- x1 Driver/Left Front Mounting Bracket [A]
- x1 Passenger/Right Front Mounting Bracket [C]
- x2 Driver/Left Center & Rear Mounting Brackets [B]
- x2 Passenger/Right Center & Rear Mounting Brackets [D]
- x12 8mm Lock Washers
- x12 8mm x 24mm x 2mm Flat Washers
- x12 8-1.25mm x 30mm Hex Bolts
- x12 8-1.25mm x 25mm Combo Bolts



x2

[B]

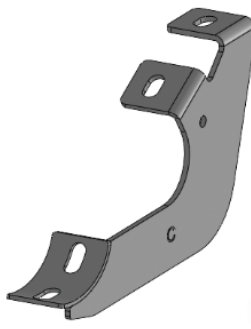
Driver/Left Center & Rear
Mounting Brackets



x1

[A]

Driver/Left Front
Mounting Bracket



x1

[C]

Passenger/Right Front
Mounting Bracket



x2

[D]

Passenger/Right Center & Rear
Mounting Brackets



x12

8-1.25mm x 25mm Combo Bolts



x12

8mm x 24mm x 2mm Flat Washers



x12

8mm Lock Washers

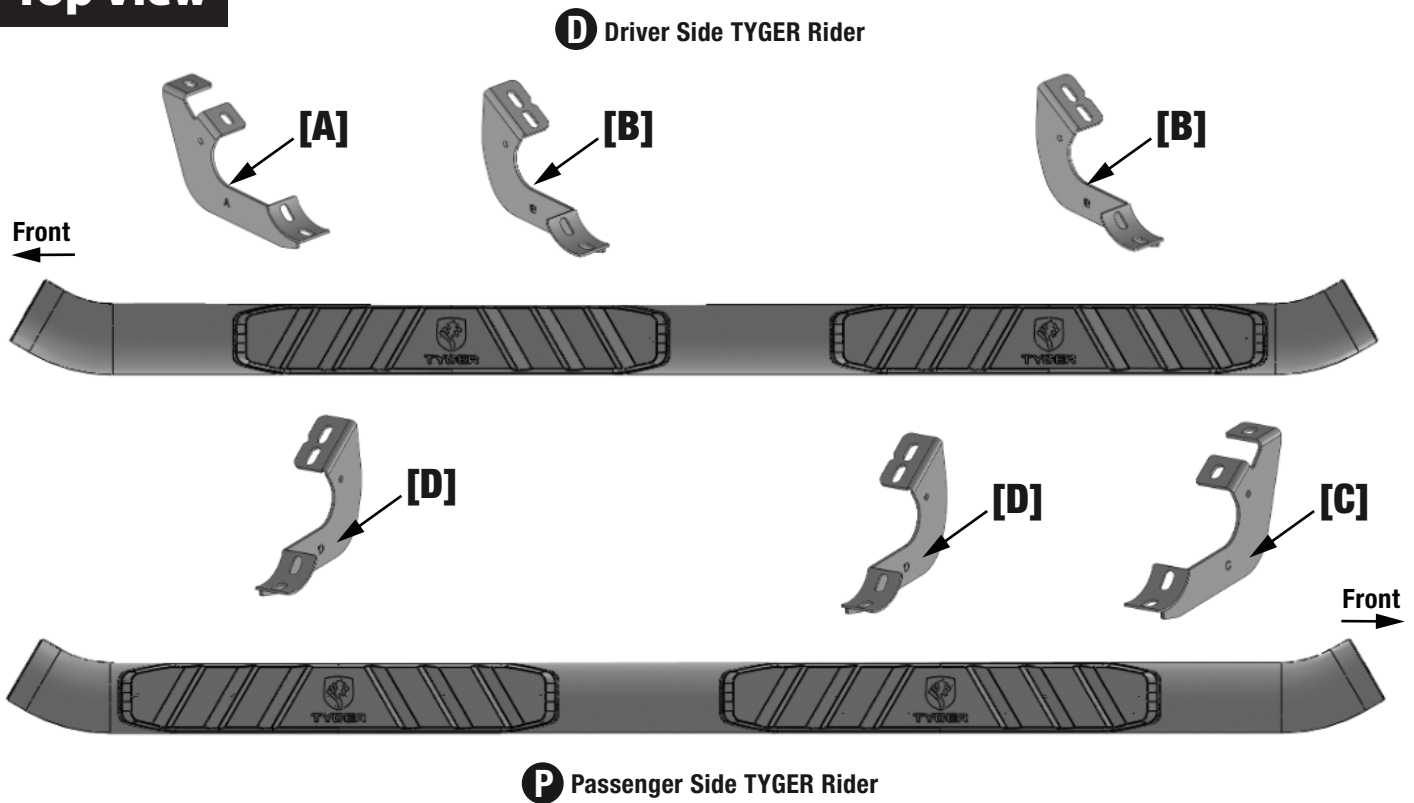


x12

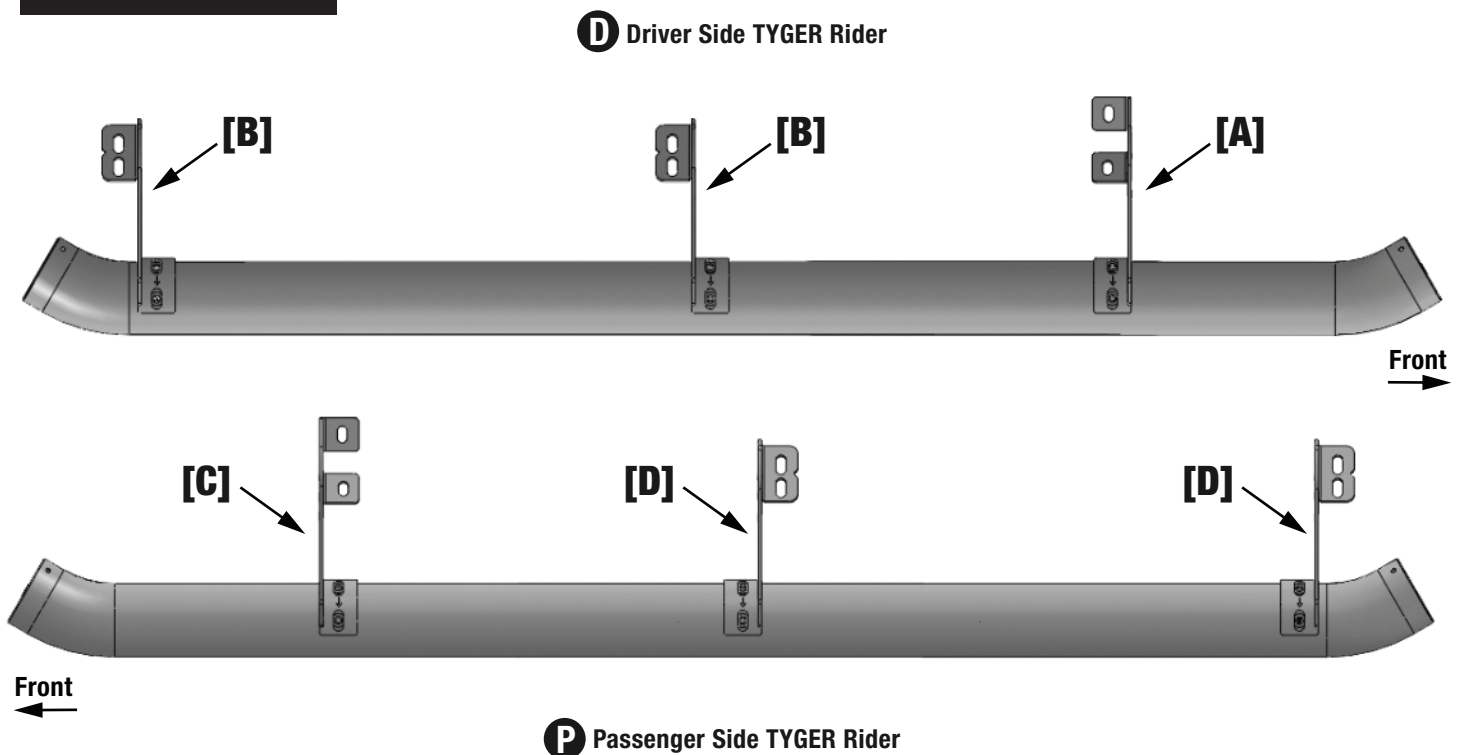
8-1.25mm x 30mm Hex Bolts

Reference the letters printed on the brackets to determine mounting locations

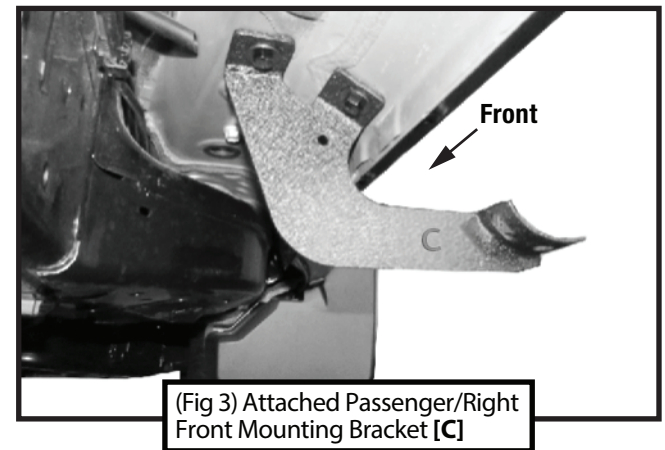
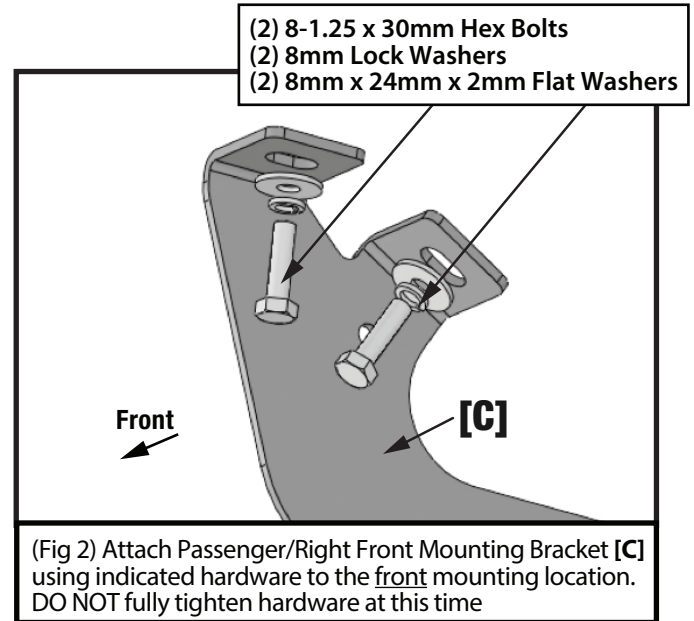
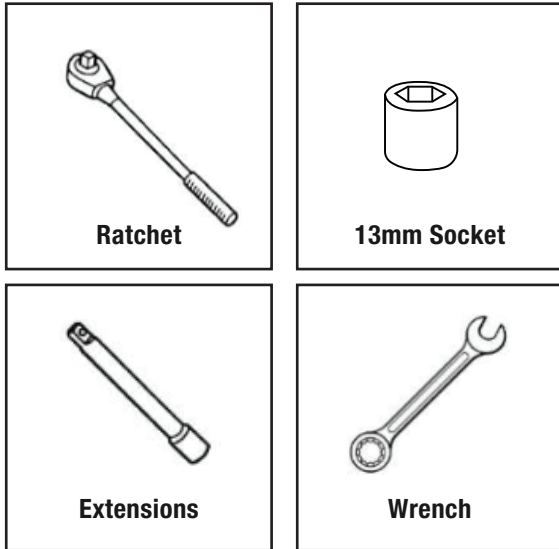
Top View



Bottom View

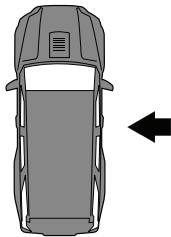


TOOLS REQUIRED

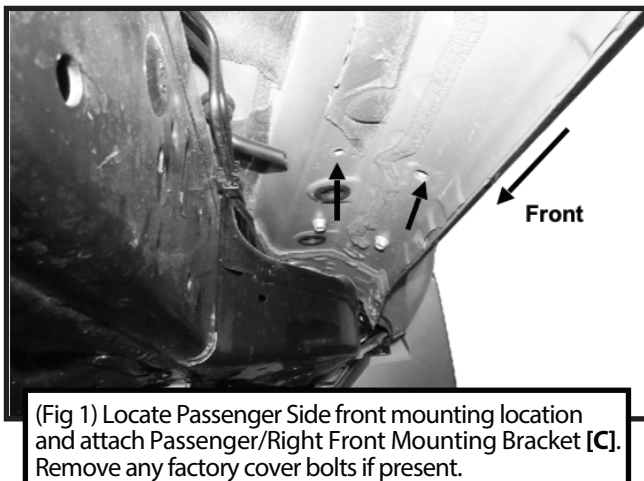


STEP 1 MOUNTING BRACKETS

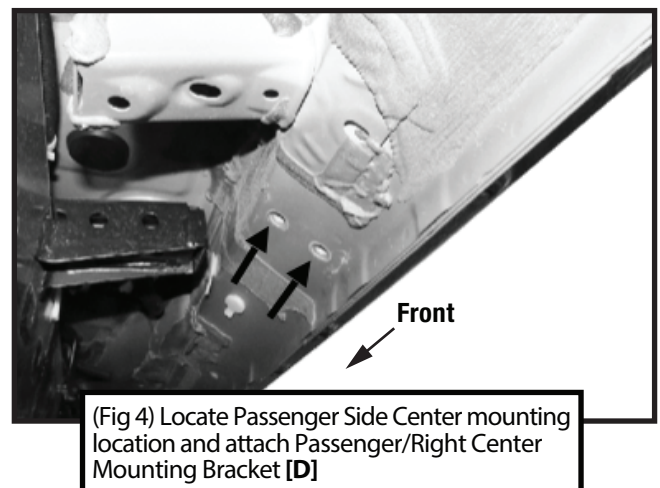
Follow (Fig 1 – 8) to attach the brackets to the Passenger/Right Side. **DO NOT** fully tighten hardware at this time.

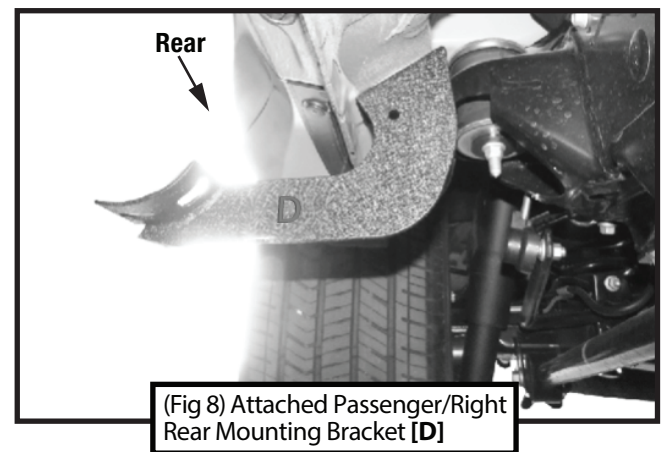
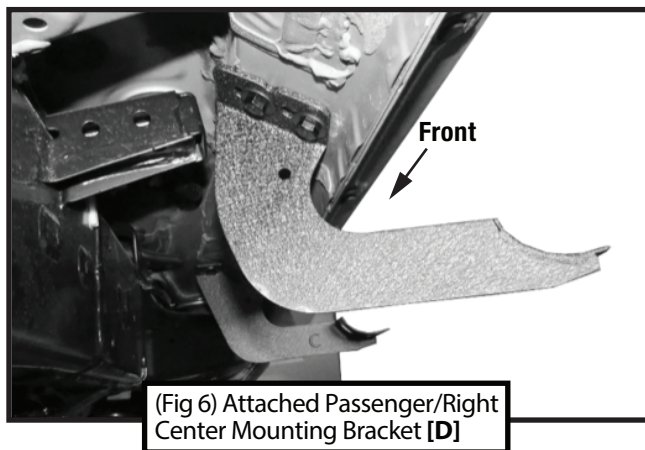
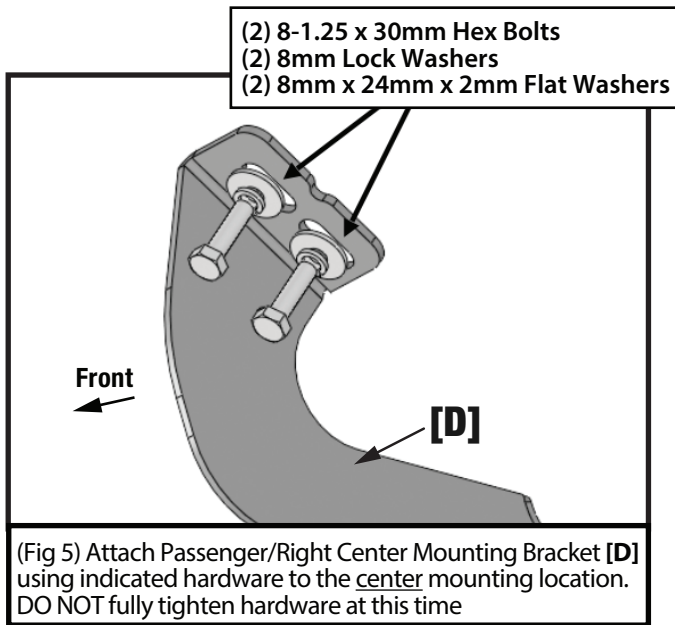


Passenger-side Front Mounting Areas



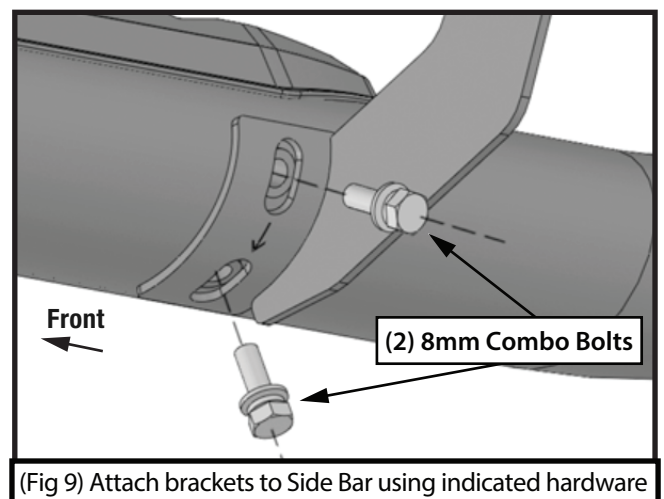
Passenger-side Center Mounting Areas



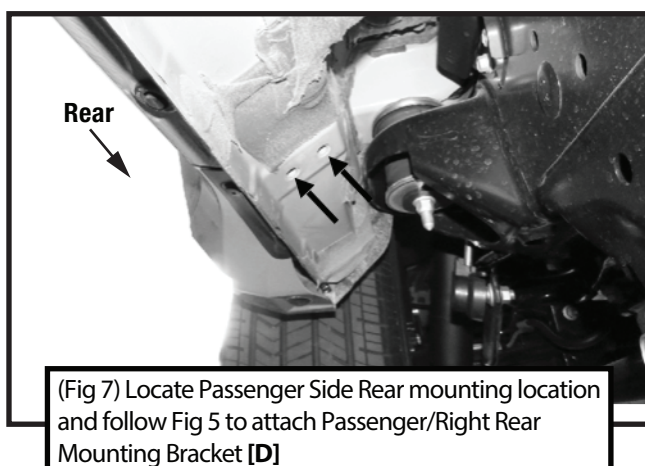


STEP 2 MOUNTING RUNNING BOARD

Follow (Fig 9) to install the Side Bar to the Passenger/Right side. Ensure all hardware is hand tightened at this point.

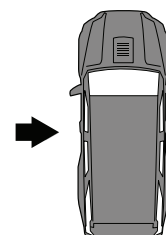


Passenger-side Rear Mounting Areas



STEP 3 DRIVER SIDE

Repeat **STEPS 1-2** for driver side installation. Use Front Mounting Bracket [A] instead of [C]; Use Center and Rear Mounting Brackets [B] instead of [D].



STEP 4 COMPLETION

Ensure Side Step is level and straightened, then **tighten all fasteners**. Installation is complete. Perform periodic inspections to the installation to make sure that all hardware is secure and tight.