



TYGER®

TYGER TRAX

TG-TX7T28228

Scan to Download the
Latest Digital Version



BEFORE INSTALLATION

READ INSTRUCTIONS CAREFULLY BEFORE STARTING INSTALLATION. REMOVE CONTENTS FROM BOX AND VERIFY ALL PARTS ARE PRESENT. FAILURE TO IDENTIFY DAMAGE BEFORE INSTALLATION COULD LEAD TO A REJECTION OF ANY CLAIM. IF MISSING PARTS OR ANY DAMAGE FOUND, PLEASE TAKE A PICTURE FOR THE CLAIM PURPOSE. TO FILE YOUR CLAIM, PLEASE VISIT: WWW.TYGERAUTO.COM/CONTACT

TORQUE VALUES

Fastener Size	Class 8.8 Torque (ft-lbs)	Class 10.9 Torque (ft-lbs)
6mm	6-7	6-7
8mm	15-16	22-23
10mm	31-32	44-45
12mm	54-55	78-79
14mm	87-88	125-126

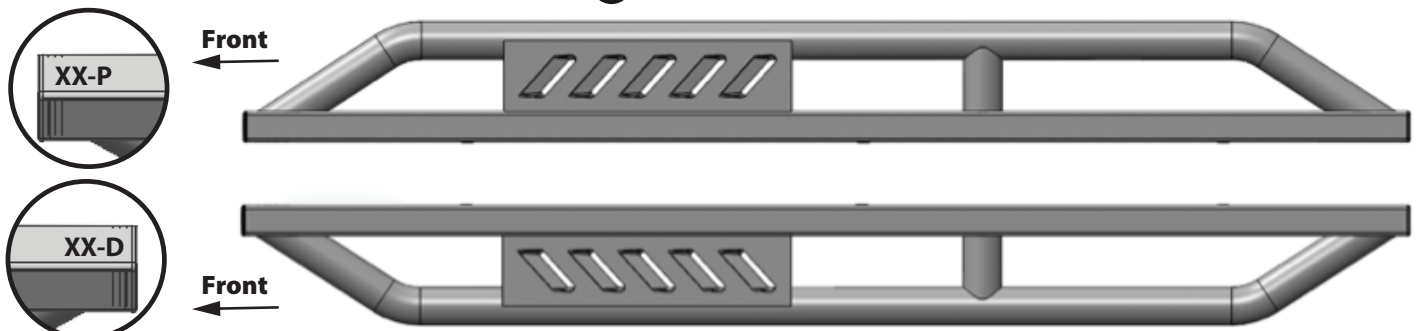
- | | |
|---|--|
| x1 Driver/Left Tyger Trax | x2 Passenger/Right Center/Rear Brackets [D] |
| x1 Passenger/Right Tyger Trax | x12 8mm x 1.25mm x 25mm Hex Combo Bolts |
| x1 Driver/Left Front Mounting Bracket [A] | x12 8mm Lock Washers |
| x1 Passenger/Right Front Mounting Bracket [C] | x12 8mm x 1.25mm x 30mm Hex Bolts |
| x2 Driver/Left Center/Rear Mounting Brackets [B] | x12 8mm x 24mm x 2mm Flat Washers |

Parts List

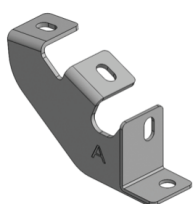
Top View

ATTENTION: Refer to **D** and **P** labelling on the side of the tubes to determine Driver and Passenger TYGER Trax

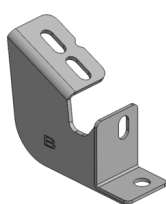
P Passenger Side TYGER Trax



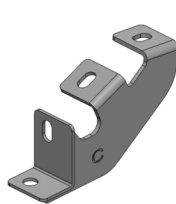
D Driver Side TYGER Trax



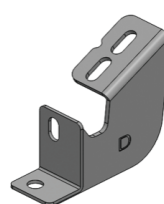
x1
[A]
Driver/Left Front
Mounting Bracket



x2
[B]
Driver/Left Center/Rear
Mounting Brackets



x1
[C]
Passenger/Right Front
Mounting Bracket



x2
[D]
Passenger/Right Center/Rear
Mounting Brackets



Hex Bolt

x12 8mm x 1.25mm x 30mm Hex Bolts



Flat Washer

x12 8mm x 24mm x 2mm Flat Washers



Lock Washers

x12 8mm Lock Washers

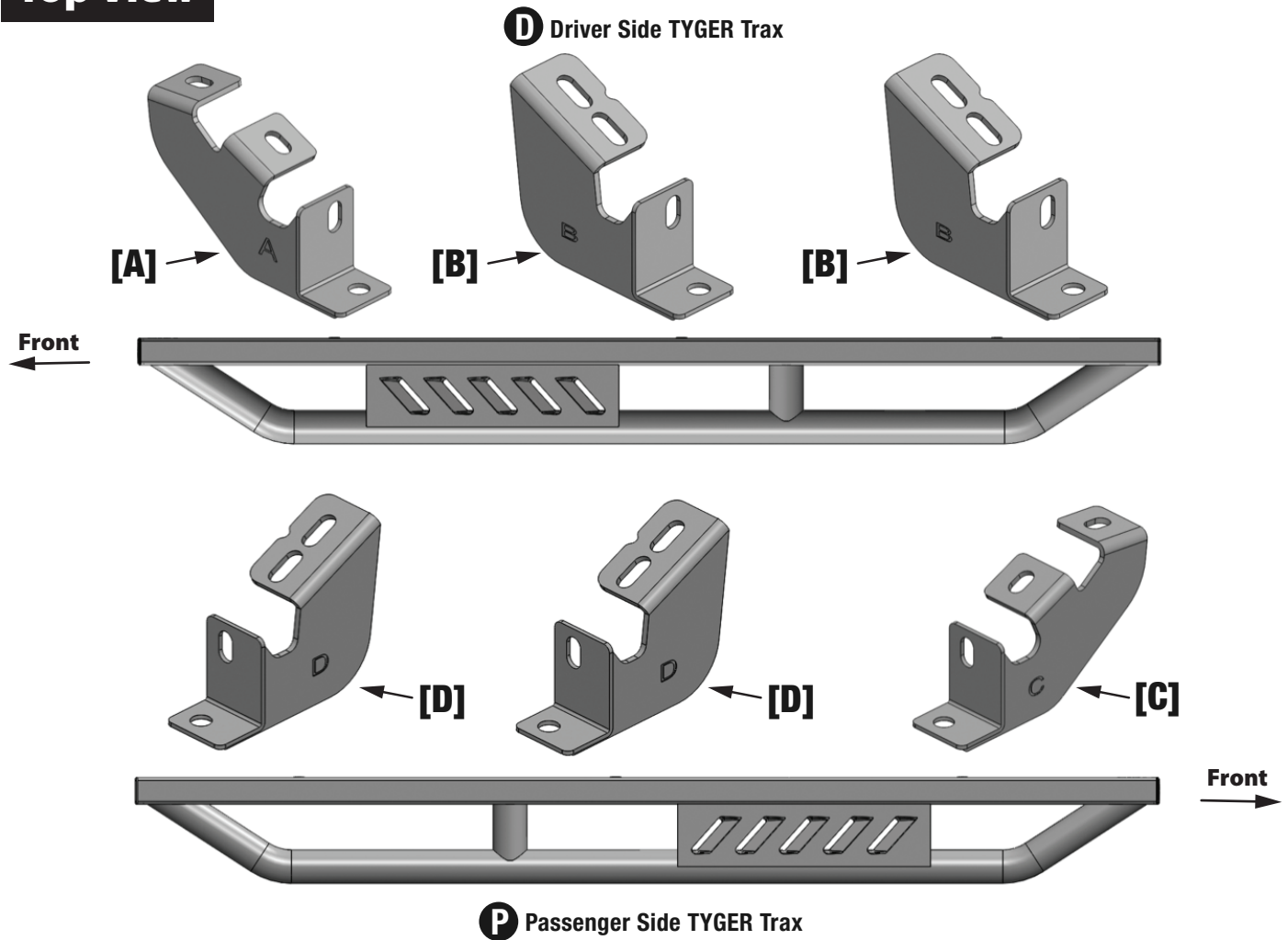


Combo Bolt

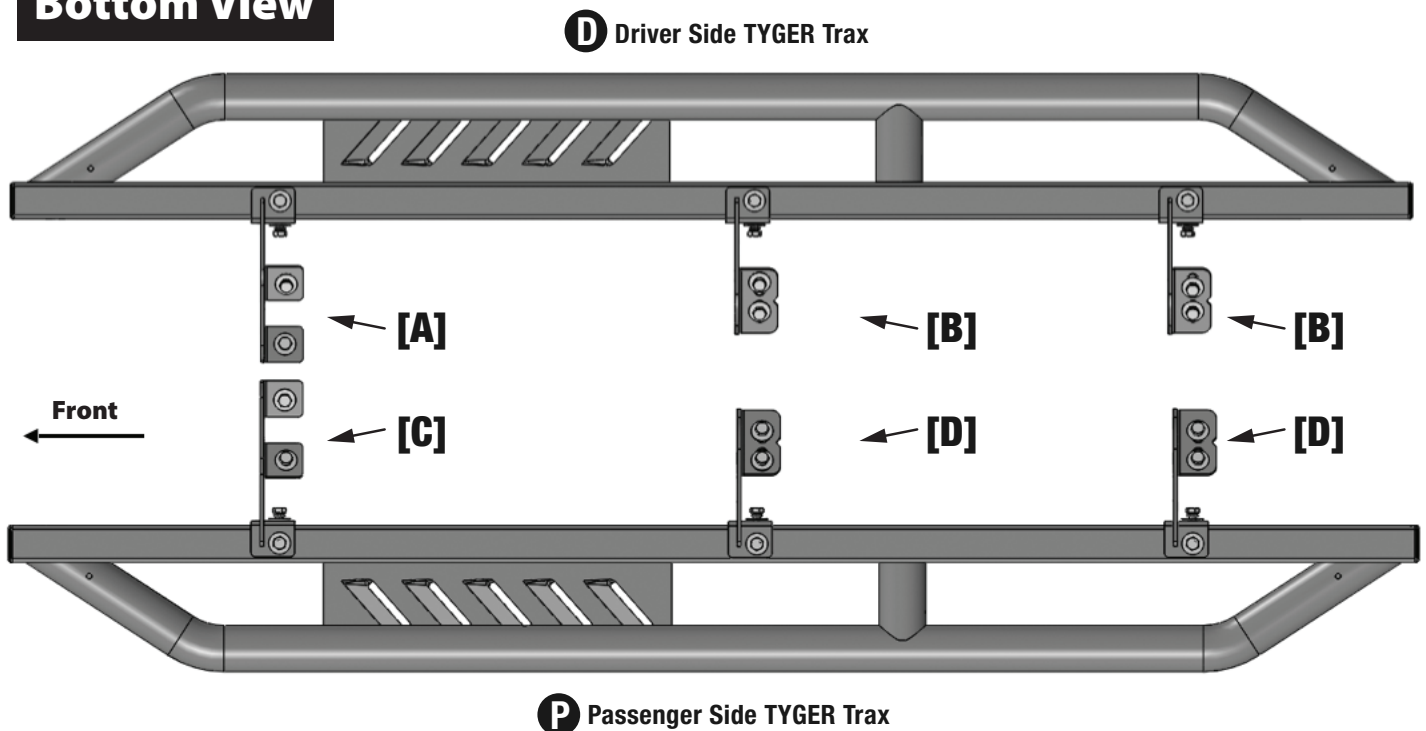
x12 8 - 1.25mm x 25mm Combo Bolts

Reference the letters printed on the brackets to determine mounting locations

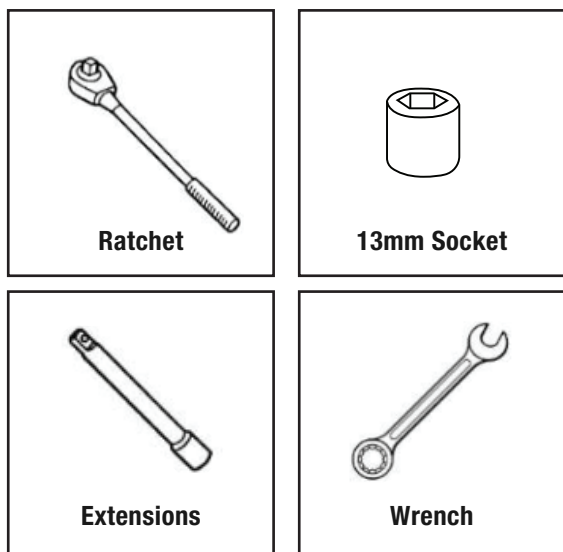
Top View



Bottom View

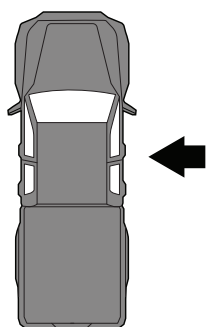


TOOLS REQUIRED

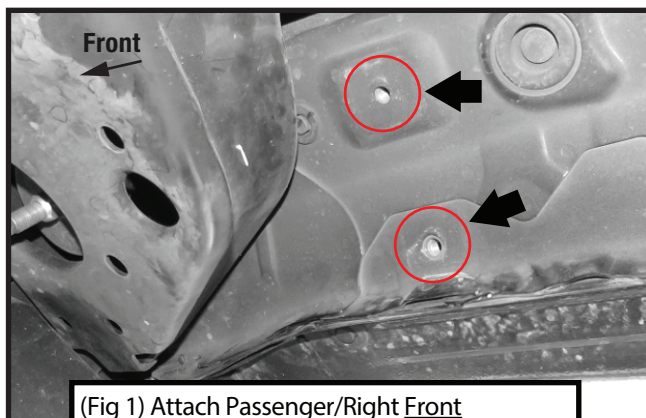


STEP 1 MOUNTING BRACKETS

Follow (Fig 1 – 9) to attach the brackets to the Passenger/Right Side. Ensure all hardware is hand tightened at this point.



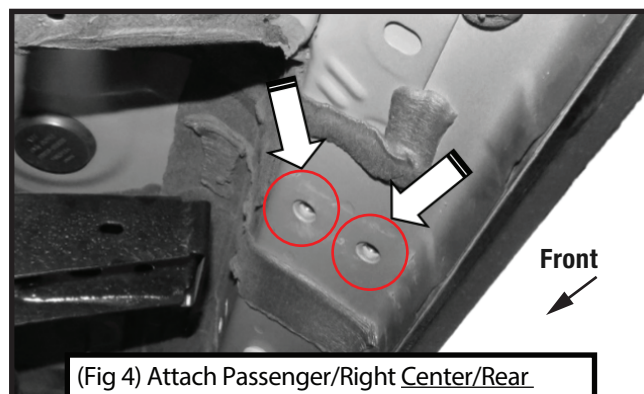
Passenger-side Front Mounting Area



(Fig 1) Attach Passenger/Right Front Mounting Bracket [C] to front threaded inserts

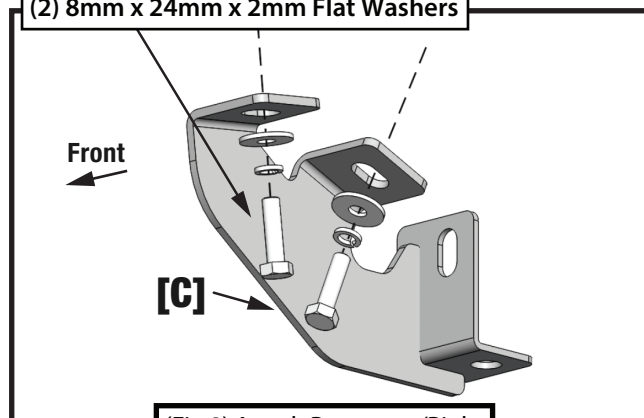


Passenger-side Center Mounting Area

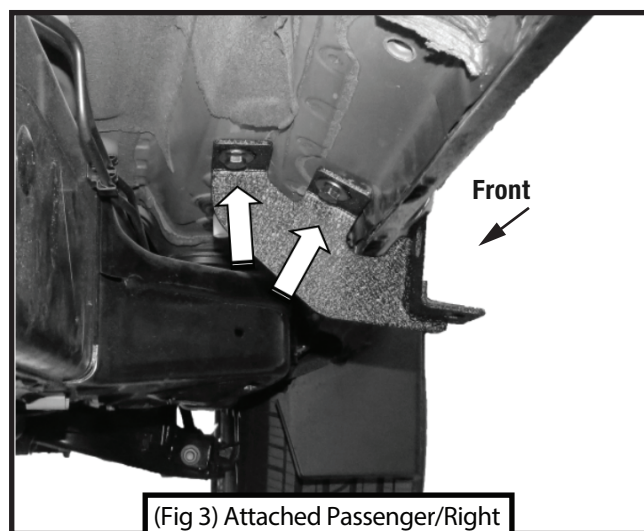


(Fig 4) Attach Passenger/Right Center/Rear Mounting Bracket [D] to center threaded inserts

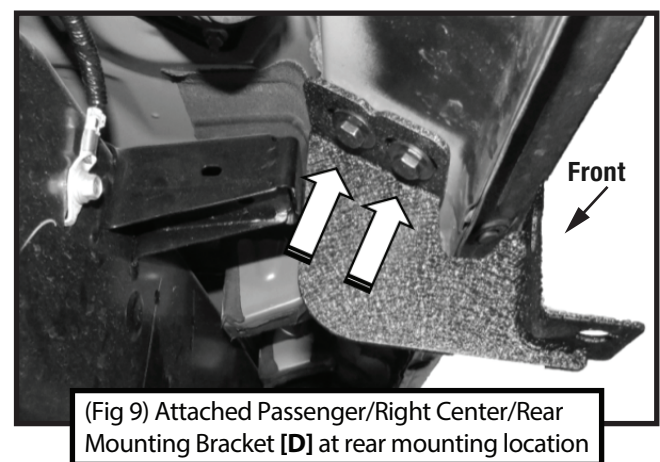
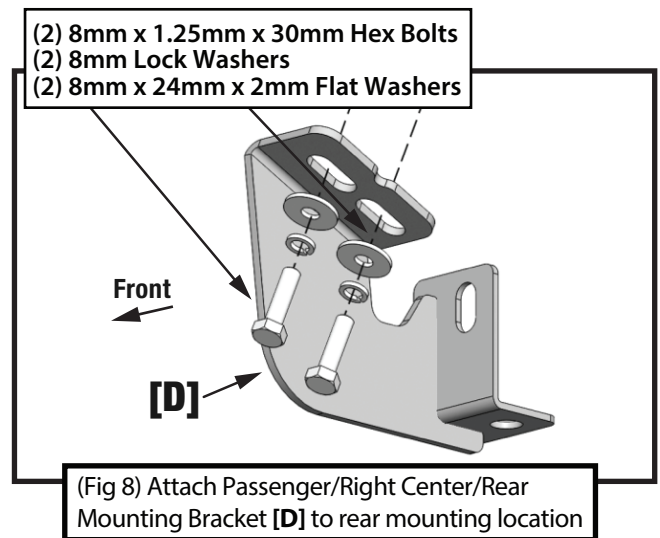
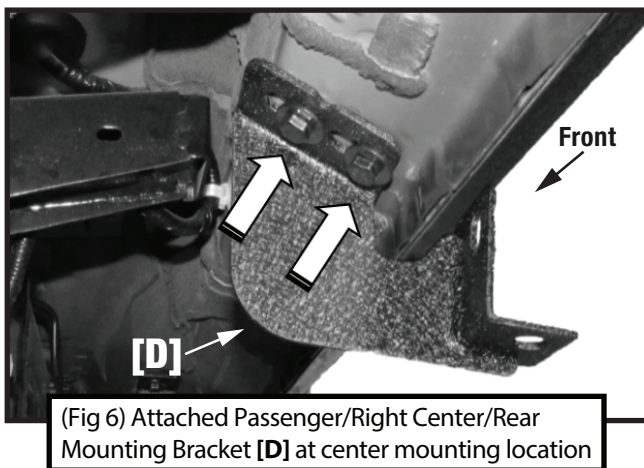
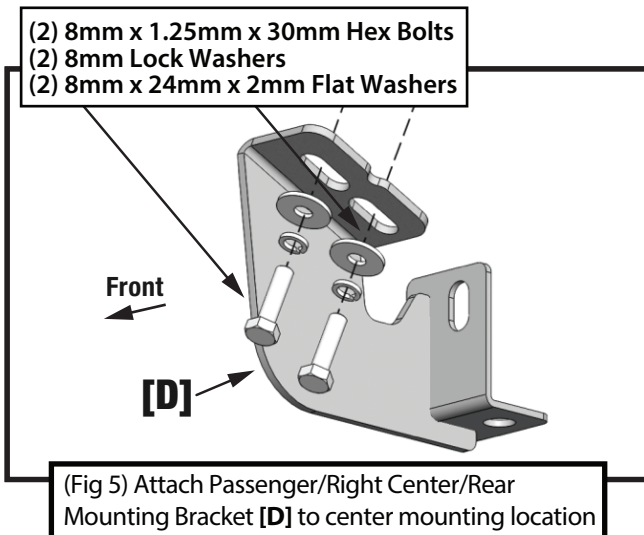
- (2) 8mm x 1.25mm x 30mm Hex Bolts
- (2) 8mm Lock Washers
- (2) 8mm x 24mm x 2mm Flat Washers



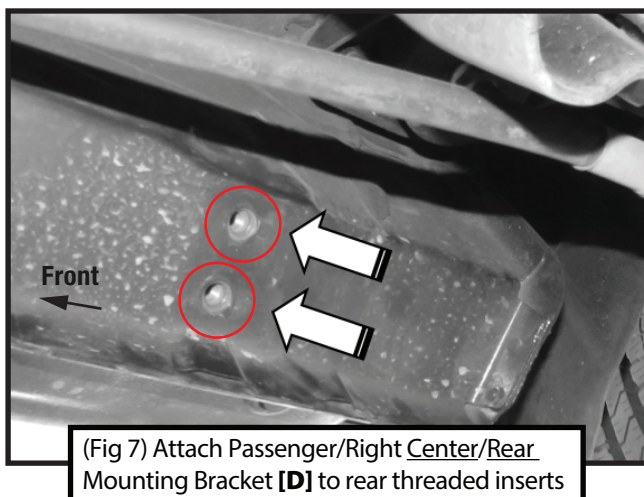
(Fig 2) Attach Passenger/Right Front Mounting Bracket [C]



(Fig 3) Attached Passenger/Right Front Mounting Bracket [C]

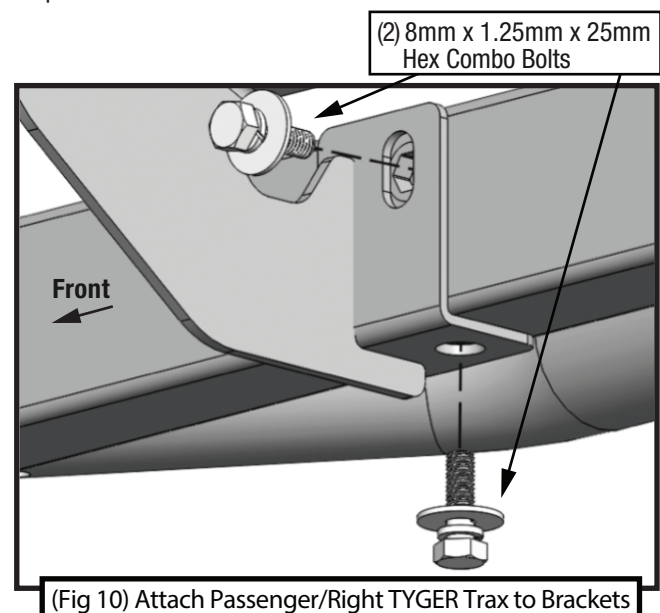


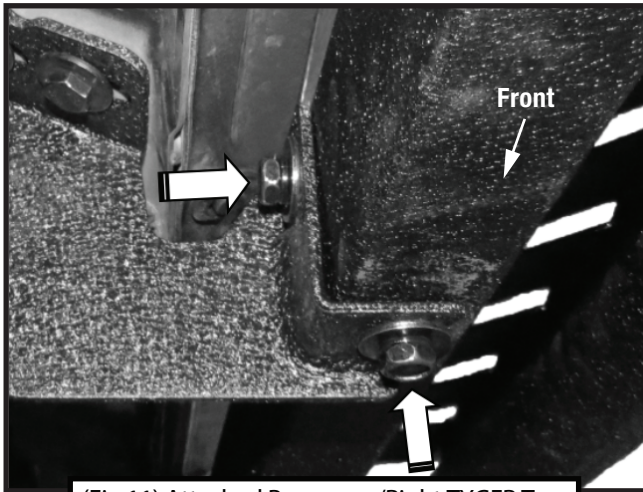
Passenger-side Rear Mounting Area



STEP 2 MOUNTING RUNNING BOARD

Follow (Fig 10 – 11) to install the TYGER Trax on the Passenger/Right. Ensure all hardware is hand tightened at this point.

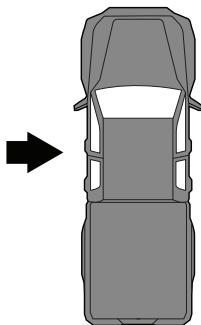




(Fig 11) Attached Passenger/Right TYGER Trax

STEP 3 DRIVER SIDE

Repeat **STEPS 1-2** for driver side installation.
 Use Front Mounting Bracket **[A]** instead of **[C]**;
 Use Center Mounting Bracket **[B]** instead of **[D]**;
 Use Rear Mounting Bracket **[B]** instead of **[D]**.



STEP 4

Ensure TYGER Trax is level and straightened, then tighten all fasteners. Installation is complete. Do periodic inspections to the installation to make sure that all hardware is secure and tight.

